

HEMS & EDGE FINISHES

BLIND HEM

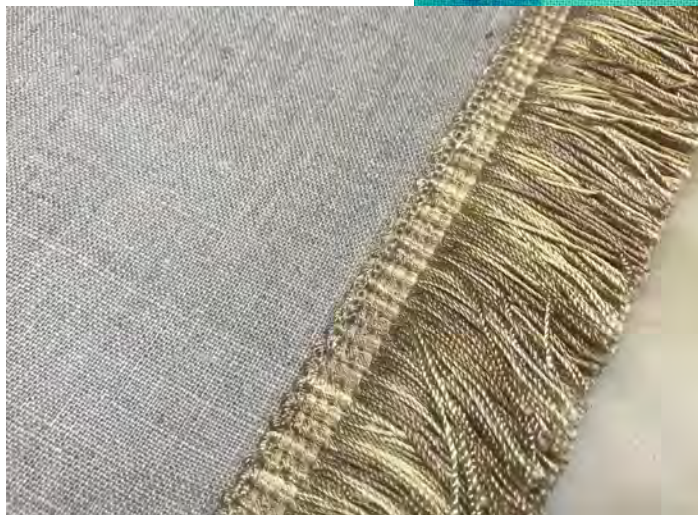
BIAS BINDING

FRENCH BINDING

CORDED EDGE

NARROW HEM

TRIMMED EDGE



BLIND HEM

This traditional folded hem is stitched using Blindstitch Foot #5. This hem is good for a variety of projects including dresses, skirts and draperies. Blindstitch Foot #5 has a 5.5 mm needle opening but can be used with all BERNINA sewing machines.

Supplies & Settings

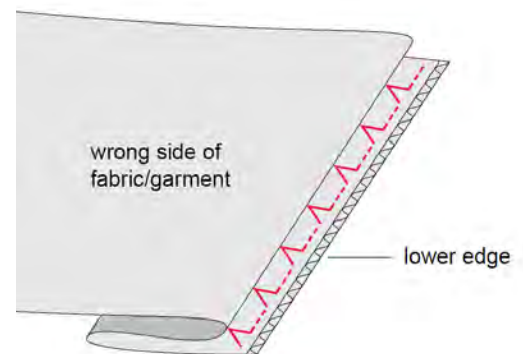
- One piece firmly woven fabric, 6" x 10"
- Cotton or polyester thread in a color that matches or blends with the fabric
- Blind Hem Foot #5
- 80/12 Universal needle
- Far Right needle position (this is the default setting for the Blindstitch)
- Stitch: Blindstitch

Blind Hem

1. Finish the lower edge of the fabric with an overlock or zigzag stitch.
2. Attach Blindstitch Foot #5 to the machine.
3. Select the Blindstitch, which is Stitch #9 on most BERNINA models.
4. Fold the hem allowance to the wrong side. Use a basting or a long straight stitch to baste the hem in place about ¼" from the finished edge.
5. Fold the project back against the basting so the finished edge is exposed. The needle will stitch on this edge and every few stitches, it will take a small stitch into the fold of the garment.
6. Place the fold next to the guide of the foot. As you sew, put your left hand on the project, keeping the fold in constant contact with the guide.
7. Because the guide extends down the middle of the foot, the needle must form the stitch over it as the hem is sewn. This makes a loose stitch, which in this case is a good thing. The extra slack in the thread lets the fabric lie flat without puckering once the hem is stitched.



Blind Hem Foot #5



BIAS BINDING

Bound edges are common on quilts but can also be found on other projects including garments, purses, and pillows.

Supplies & Settings

- One piece double-sided, pre-quilted fabric, 5" x 10" and one bias strip 18" in length x the width indicated in the binder instructions
- Cotton or polyester thread
- Binder Foot #95/95C
- 80/12 Universal needle
- Needle position indicated below
- Stitch: Straight Stitch

Bias Binding

1. Select the desired size Binder Attachment #88 and attach it to the machine according to binder directions.
2. For best results, stiffen the binding fabric with Best Press Starch Alternative.
3. Attach Bias Binder Foot #95/95C to the machine.
4. Feed the bias strip into the slot of the binder. Swing binder toward you if needed for easier insertion of the strip. *Tip: Cut the end of the strip at a slant and use a stiletto or wooden skewer to encourage the fabric to feed into the binder.*
5. Raise the presser foot and pull the fabric through the binder so that the fabric extends completely under the foot.
6. Lower the presser foot and sew a few stitches. Adjust the needle position until the needle stitches on the binding edge as desired.
7. Position the fabric to be bound into the fabric channel between the folds of the bias and continue stitching, binding one 10" edge of the fabric. Make sure that the bias strip can flow freely into the binder.
8. Check to ensure that the fabric is completely encased in the fold and that the stitching catches the fabric and the binding. Adjust needle position if necessary. *Note: Finished binding should be filled with project fabric edge.*



Bias Binder #87
for pre-folded bias tape



Bias Binder #88
for flat bias strips of fabric



Binder Foot #95/95C



FRENCH BINDING

Lap Seam Foot #71 is designed for making 8 mm flat felled seam and is also useful for sewing French binding. Foot #71 holds the binding in place as it goes under the needle for the final stitching.

Supplies & Settings

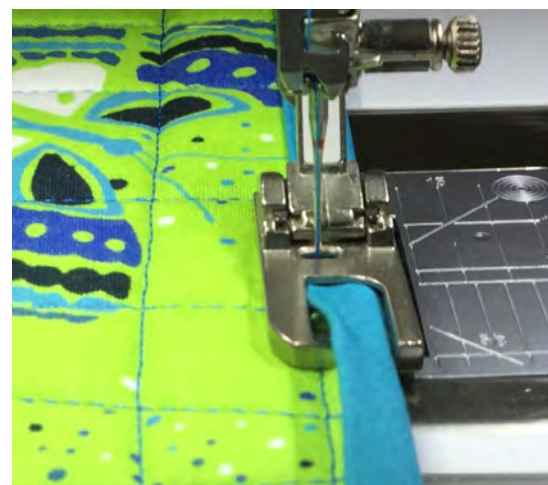
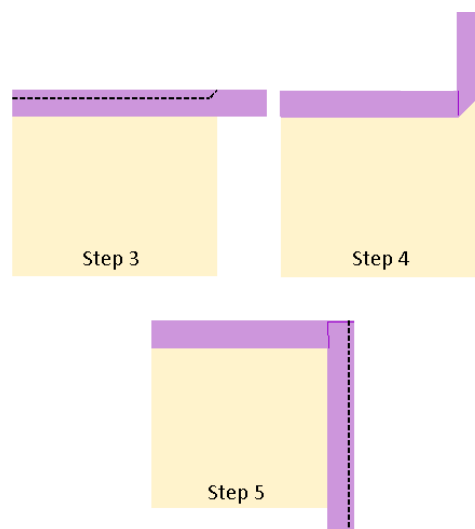
- One piece double-sided, pre-quilted fabric, 10" x 10"
- 55"-60" of 2" wide fabric strips, pieced to make 1 strip
- Cotton or polyester thread
- Lap Seam Foot #71
- 80/12 Universal needle
- Needle position as indicated below
- Stitch: Straight Stitch

French Binding

1. Fold the bias strip in half lengthwise and press.
2. Using a walking or dual feed foot, stitch the folded strip to the back of the project, using a 1/4" seam allowance. Stop 1/4" from the next edge. Backstitch or pivot 45° and sew to the point of the corner.
3. Fold the binding straight up off the quilt. The binding should have a 45° fold in it.
4. Fold the binding straight down, aligning the raw edges. Starting at the top, continue stitching the binding, mitering each corner in the same way and stopping about 4" from the beginning, leaving about 4" of unattached binding.
5. Join the two loose ends of binding, trimming to fit. Complete the stitching of the binding in place.
6. Wrap binding to front of the quilt; pin or clip in place.
7. Attach Lap Seam Foot #71 to the machine and select the Straight Stitch. Move the needle position so the stitching is placed close to the folded edge of the binding. Sew a few stitches, then stop with the needle down. Lift the presser foot and slide the edge of the binding over the small inner edge of the presser foot. Lower the foot and continue stitching to secure the binding.
8. When you get to a corner, stitch as far as you can, and then stop with the needle in the fabric. Lift the foot, remove the binding from the foot and lower the foot on top of the binding. Stitch to the corner, pivot, and start the next side. After a few stitches, place the binding back into the foot and continue stitching.



Lap Seam Foot #71



CORDED EDGE

Adding decorative cord to edges is easy to do and uses a simple zigzag stitch. This technique is used to finish edges of journal covers, art quilts, bags and other craft projects. It works best on an edge that is hemmed, faced or folded.

Supplies & Settings

- One piece medium weight fabric, 8" x 8" each
- 10" of smooth decorative cord such as rattail
- Monofilament ("invisible") or polyester thread in a color that blends or contrasts with the fabric and cord; same thread in needle & bobbin
- Bulky Overlock Foot #12/12C
- 80/12 Universal needle
- Default needle position
- Stitch: Zigzag Stitch

Corded Edge

1. Fold the fabric in half; the cord will be applied to the folded edge.
2. Attach the Bulky Overlock Foot #12/12C to the machine.
3. Place the cord next to the folded edge of the fabric.
4. Position the fabric/cord under the foot so that the cord is in the tunnel that is on the bottom of the sole.
5. Select the Zigzag Stitch; adjust stitch width so that the stitch is just wide enough to go over the cord with the left swing going into the fold of the fabric and the right one going over the cord and into the air.

Tip: For a more inconspicuous attachment the cord can be secured to the edge using a Blindstitch.



Bulky Overlock Foot #12/12C



NARROW HEM

Stitch beautiful narrow hems using one of the five BERNINA hemmer feet. The foot folds the fabric and holds it in place for stitching.

Supplies & Settings

- One piece light to medium weight fabric, 4" x 10"
- Cotton or polyester thread.
- Hemmer Foot of choice
- 80/12 Universal needle
- Center needle position
- Stitch: As directed below

Narrow Hem

1. Select one of the hemmer feet and attach it to the machine.
2. Select a straight or zigzag stitch as desired. **Note: Feet #62 and #64 require a straight stitch. The remaining feet may be used with either straight, zigzag, or other decorative stitch.**
3. Each hemmer foot has a coil that folds the fabric twice before it goes under the needle for stitching. To get started, double-fold about 2-3" of the edge to the wrong side, making the folded piece about the size of the channel on the sole.
4. Place the folded edge under the foot with the wrong side of the fabric up. Take 4-5 stitches and stop with the needle in the fabric.
5. Raise the foot and using tweezers, place the fabric edge into the coil of the foot.
6. Lower the foot and as you start sewing, hold the fabric edge slightly to the left to prevent it from coming out of the coil. Hem the entire edge.

Tips:

- Start with clean, rotary-cut edges.
- Spray starch and press the fabric edges.



Hemmer Feet #61, #62, #63



Hemmer Feet #64, #66



2 mm Straight Stitch Hemmer Foot #62

TRIMMED EDGE

When attaching heavy trim, Piping Foot #38 is a perfect choice. This foot is made for straight stitching using the center needle position only. Place the thin part of the sole on top of the trim and the thick part of the foot will hug the edge of the header. This positions the needle to stitch along the edge of the trim, securing it to the fabric.

Supplies & Settings

- One piece of drapery/upholstery weight fabric, 4" x 6"
- 7" of heavy decorative trim or fringe
- Cotton or polyester thread
- Piping Foot #38
- 90/14 Universal needle
- Center needle position
- Stitch: Straight Stitch

Attaching Heavy Trim

1. Attach Piping Foot #38 to the machine. *Note: This foot is designed to work with a center needle position only. Using other positions may cause the needle to strike the foot, break the needle, and possibly damage the machine.*
2. Position the header of the trim on the fabric, about ½" up from the edge. The raw edge can be finished before attaching the trim using a serger or an overcast stitch on the sewing machine.
3. Position the fabric/trim under the needle with the "thick" part of the sole on the fabric and the "thin" part of the sole on the header of the trim. The presser foot evens out the surface, letting the foot ride smoothly rather than wobble along an uneven surface.
4. Sew along the header to attach the trim to the fabric.



Piping Foot #38

