



Delectable Mountains

*Fabrics by Katny Hall with Jo Morton for the
International Quilt Study Center*



makower uk®

1384 Broadway • New York, NY 10018
(800) 223-5678 • www.andoverfabrics.com

Quilt designed by Gail Kessler
Finished size: 70¾" x 70¾"

8/10/11

Delectable Mountains Quilt

Introducing Andover Fabrics new collection: Delectable Mountains by Kathy Hall with Jo Morton
for the International Quilt Study Center. Quilt designed and made by Gail Kessler

Quilt finishes 70¾" x 70¾"
24 Pieced Blocks: 12½" x 12½"

A lovely rose garden is waiting to burst into bloom when you make this easy quilt. Quick methods for piecing the half-square triangles will allow you time to add quilting of your choice in the large patches. A variety of print scale adds interest and texture to the quilt.

Fabric Requirements

		Yardage	
Fabric A*	blocks	2¼ yards	5541-B
Fabric B	blocks	1¼ yards	5542-B
Fabric C	blocks	⅞ yard	5542-N
Fabric D	blocks	⅝ yard	5545-RH
Fabric E	blocks	1⅛ yards	5547-RH
Fabric F	blocks	¾ yard	5548-RH
Fabric A	backing	4½ yards	5541-B

**includes binding*

Cutting Directions

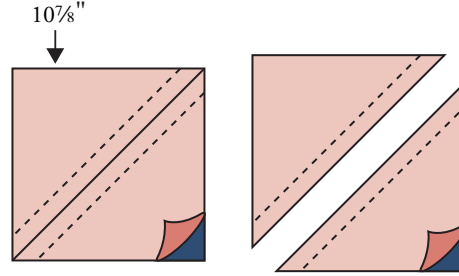
Note: WOF designates the width of fabric from selvedge to selvedge (approximately 42" wide).

- Fabric A** Cut (4) 19" squares, cut in half diagonally twice to make 16 quarter-square triangles
Cut (2) 10⅞" squares, cut in half diagonally to make 4 half-square triangles
Cut (48) 3⅜" squares, cut in half diagonally to make 96 half-square triangles
Cut (12) 3" squares
Cut (8) strips 2½" x WOF for binding
- Fabric B** Cut (6) 10⅞" squares, cut in half diagonally to make 12 half-square triangles
Cut (48) 3⅜" squares, cut in half diagonally to make 96 half-square triangles
- Fabric C** Cut (4) 10⅞" squares, cut in half diagonally to make 8 half-square triangles
Cut (32) 3⅜" squares, cut in half diagonally to make 64 half-square triangles
- Fabric D** Cut (2) 10⅞" squares, cut in half diagonally to make 4 half-square triangles
Cut (16) 3⅜" squares, cut in half diagonally to make 32 half-square triangles
- Fabric E** Cut (6) 10⅞" squares, cut in half diagonally to make 12 half-square triangles
Cut (32) 3⅜" squares, cut in half diagonally to make 64 half-square triangles
Cut (8) 3" squares
- Fabric F** Cut (4) 10⅞" squares, cut in half diagonally to make 8 half-square triangles
Cut (16) 3⅜" squares, cut in half diagonally to make 32 half-square triangles
Cut (4) 3" squares
- Backing** Cut (2) panels 40" x 79", pieced to fit quilt top with 4" overlap

Delectable Mountains Quilt

Making and Assembling the Quilt

1. Draw a diagonal line on the wrong side of a Fabric D $10\frac{7}{8}$ " square. Referring to Diagram 1, place marked square on a Fabric A square, right sides together and raw edges aligned. Sew $\frac{1}{4}$ " seam on each side of marked line; cut apart on marked line. Press open to make 2 large pieced squares. Make a total of 4 large pieced squares in this color combination. In same manner, join Fabric C and Fabric F squares to make 8 large pieced squares. Join Fabric B and Fabric E squares to make 12 large pieced squares. Set aside.



2. In similar manner, use the $3\frac{3}{8}$ " squares to make small pieced squares in the fabric combinations and quantities shown (Diagram 2).

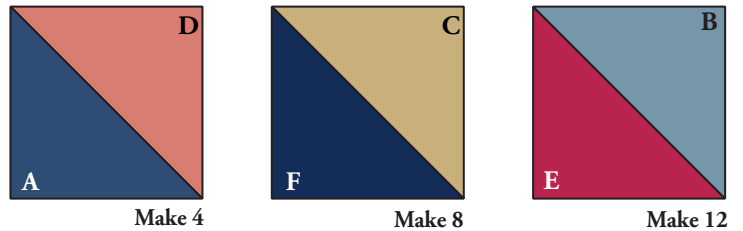


Diagram 1

3. Referring to Diagram 3, use 8 small pieced squares, a 3 " square, and a large pieced square in the appropriate color combinations to make 4 Block X, 8 Block Y, and 12 Block Z.

4. Referring to the Quilt Diagram, arrange and stitch 6 diagonal rows using blocks and Fabric A quarter-square triangles. Sew rows together. Stitch 2 Fabric A triangles together to form corner triangle. Make 4 and sew to corners.

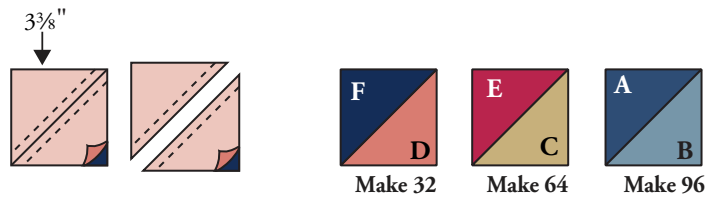


Diagram 2

Finishing the Quilt

5. Layer the quilt with batting and backing; baste. Quilt in the ditch around block patches. Quilt a motif of your choice in the large triangles in the blocks. Bind to finish the quilt.

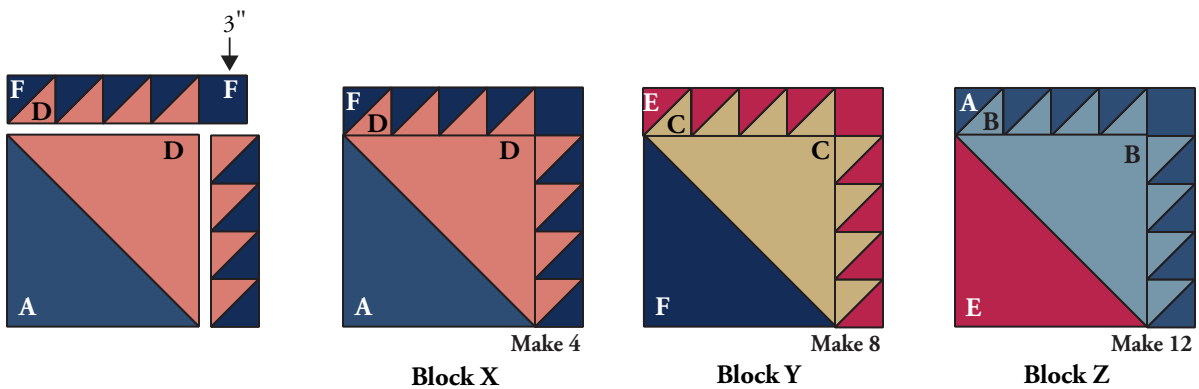
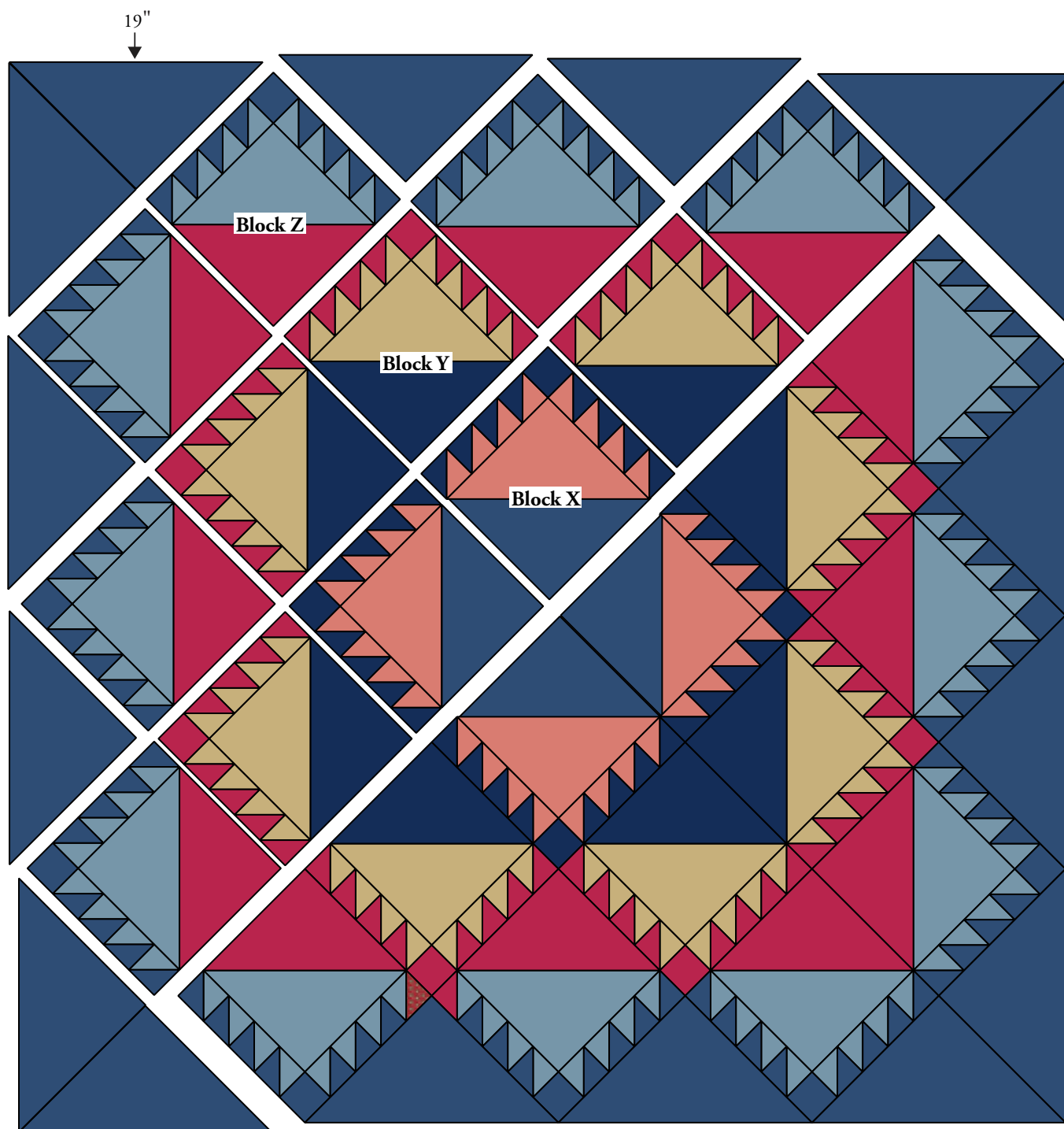


Diagram 3

Delectable Mountains Quilt



Quilt Assembly Diagram

1384 Broadway
New York, NY 10018
(800) 223-5678
www.andoverfabrics.com

Delectable Mountains

by Kathy Hall with Jo Morton for
the International Quilt Study Center

Andover
Fabrics™
makower uk®



5541-B*



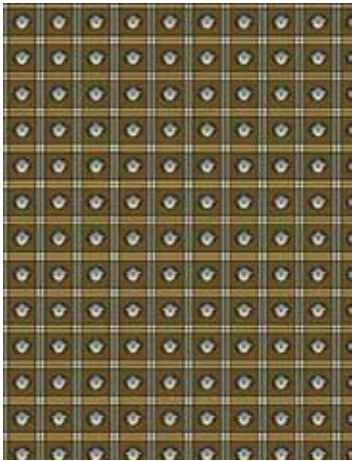
5541-N



5542-B*



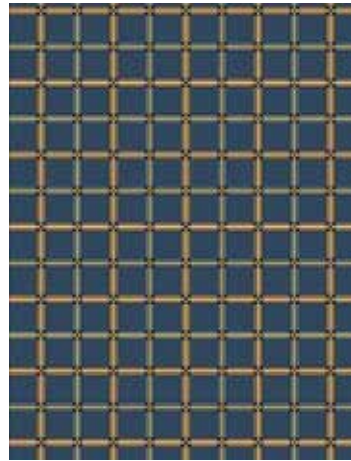
5542-N*



5543-N



5543-RH



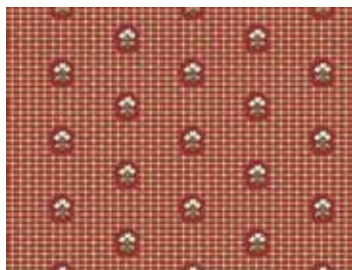
5544-B



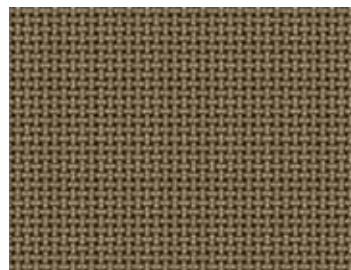
5544-RH



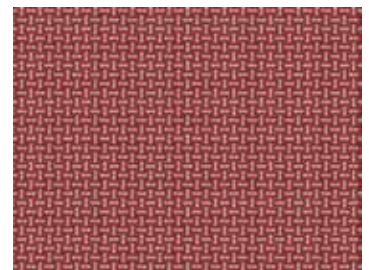
5545-B



5545-RH*



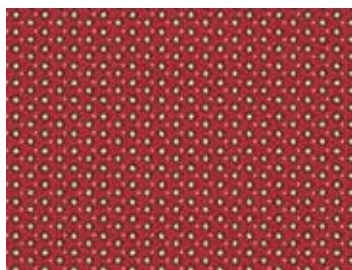
5546-N



5546-RH



5547-B



5547-RH*



5548-N



5548-BH*

*Indicates fabric used in quilt pattern. Fabrics shown are 20% of actual size.

Free Pattern Download Available at www.andoverfabrics.com

8/10/11