

# WHY

Pieced

Designed by Leanne Anderson



A Free Project Sheet From



Henry Glass & Co., Inc.



facebook

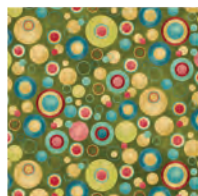
Finished Quilt Size: 52" x 52"  
49 West 37th Street, New York, NY 10018  
tel: 212-686-5194 fax: 212-532-3525  
Toll Free: 800-294-9495  
[www.henryglassfabrics.com](http://www.henryglassfabrics.com)

# WHY

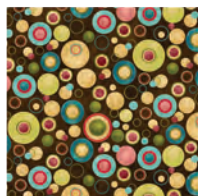
Pieced

Finished Quilt Size: 52" x 52"

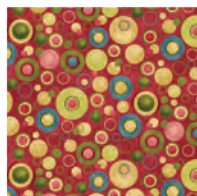
## Fabrics in the Collection



8218-66  
Dots - Green



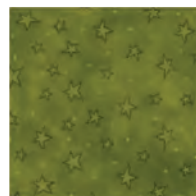
8218-38  
Dots - Brown



8218-22  
Dots - Rose



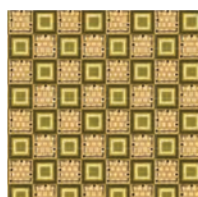
8217-77  
Stars - Teal



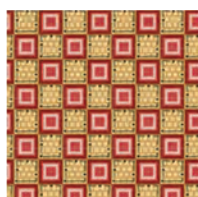
8217-66  
Stars - Green



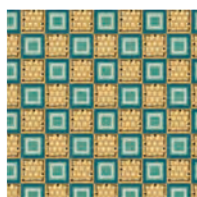
8217-38  
Stars - Brown



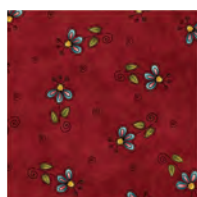
8216-66  
Check - Green



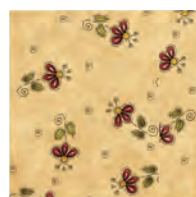
8216-22  
Check - Rose



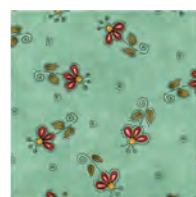
8216-11  
Check - Lt. Teal



8215-88  
Flowers - Red



8215-44  
Flowers - Tan



8215-11  
Flowers - Lt. Teal



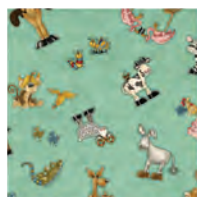
8214-66  
Words - Green



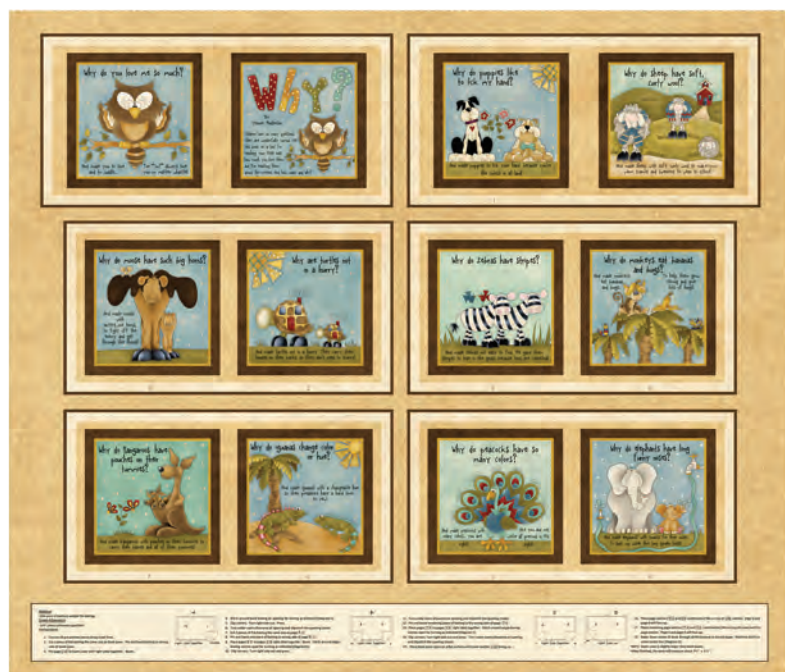
8214-77  
Words - Lt. Teal



8213-88  
Characters - Red



8213-11  
Characters - Lt. Teal



8211P-44  
Book Panel - Tan



8212P-44  
Banner Panel - Tan

### Materials

1/3 yard	Flowers – Red	8215-88
3/4 yard	Words – Lt. Teal	8214-77
7/8 yard	Stars – Teal	8217-77
7/8 yard	Flowers – Lt. Teal	8215-11
7/8 yard	Words – Green	8214-66
1 1/8 yards	Flowers – Tan	8215-44
7/8 yard	Check – Green	8216-66
1/4 yard	Check – Lt. Teal	8216-11
3/4 yard	Stars – Green	8217-66
7/8 yard	Stars – Brown	8217-38
7/8 yard	Characters – Red	8213-88
1/2 yard	Dots – Brown	8218-38 (Binding)
3 1/2 yards	Characters – Lt. Teal	8213-11 (Backing)

### Cutting Instructions

*Please note: all strips are cut across the width of fabric (WOF) from selvage to selvage edge.*

#### From the Flowers - Red (A), cut:

- (1) 5 1/2" x width of fabric (WOF) strip. Sub-cut the strip into (1) 5 1/2" square and (12) 3" squares.

#### From the Words - Lt. Teal (B), cut:

- (9) 2 1/2" x WOF strips

#### From the Stars - Teal (C), cut:

- (9) 2 1/2" x WOF strips
- (1) 3 1/2" x WOF strip.

#### From the Flowers - Lt. Teal (D), cut:

- (9) 2 1/2" x WOF strips
- (1) 3 1/2" x WOF strips.

#### From the Words - Green (E), cut:

- (9) 2 1/2" x WOF strips
- (1) 3 1/2" x WOF strips.

#### From the Flowers - Tan (F), cut:

- (9) 2 1/2" x WOF strips
- (1) 3 1/2" x WOF strips.
- (2) 2" x 39 1/2" strips.
- (2) 2" x 42 1/2" strips.

#### From the Check - Green (G), cut:

- (9) 2 1/2" x WOF strips
- (1) 3 1/2" x WOF strip.

#### From the Check - Lt. Teal (H), cut:

- (1) 3 1/2" x WOF strip.

#### From the Stars - Green (I), cut:

- (9) 2 1/2" x WOF strips

#### From the Stars - Brown (J), cut:

- (2) 2" x 36 1/2" strips.
- (2) 2" x 39 1/2" strips.
- (1) 18 5/8" square. Cut the square across both diagonals to make (4) triangles.

#### From the Characters - Red (K), cut:

- (2) 5 1/2" x 42 1/2" strips.
- (3) 5 1/2" x WOF strips. Sew the strips together, end to end, and cut (2) 5 1/2" x 52 1/2" strips.

#### From the Dots - Brown (L), cut:

- (6) 2 1/2" x WOF strips for the binding.

#### From the Characters - Lt. Teal (Backing), cut:

- (2) 60" x WOF strips for the backing. Sew the strips together and trim to make the 60" x 60" back.

### Sewing Instructions

*Note: You can use our quilt image as a guide or make your blocks scrappy as desired.*

1. To make the block center squares "wonky" use a ruler and rotary cutter to cut each side at an angle on each 3" Fabric A squares and one 5 1/2" Fabric A square (Fig. 1).

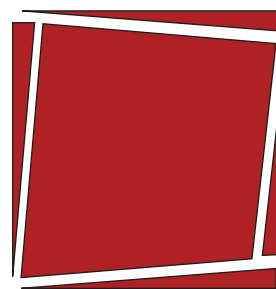


Fig. 1

2. Start at one end of (1) 2 1/2" x WOF Fabric D strip and sew six block centers onto the strip, right sides together (Fig. 2). Leave about 1" of space between each center. Press the centers open before cutting them apart. Cut the centers apart so the Fabric D strip is even with the center edge (Fig. 3).



Fig. 2

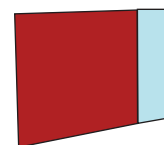


Fig. 3

3. Repeat 2 with another Fabric D strip and an adjacent side of the center.
4. Continue to work around the block center with Fabric E strips for the other two sides.

5. To make the block center squares with frames “wonky” use a ruler and rotary cutter to cut each side at an angle to complete the block center units (Fig. 4). These should measure approximately  $5\frac{1}{2}'' \times 5\frac{1}{2}''$ . Remember the sides will be wonky so it should not be square.

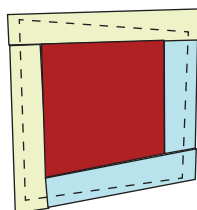


Fig. 4

6. Follow Figure 5 for fabric placement and Repeat Steps 2-5 to add another round of strips with Fabric C and Fabric F strips. After trimming the blocks to create a wonky block it should measure approximately  $7\frac{1}{2}'' \times 7\frac{1}{2}''$ .

7. Follow Figure 5 for fabric placement and Repeat Steps 2-5 to add another round of strips with Fabric B and Fabric I strips. Square the blocks to measure  $9\frac{1}{2}''$  square to make six Block One squares.

8. Follow Figure 6 for fabric placement and repeat steps 2-7 to make six  $9\frac{1}{2}''$  Block Two squares.

Block One

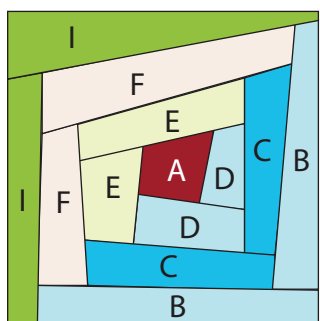


Fig. 5

make 6

Block Two

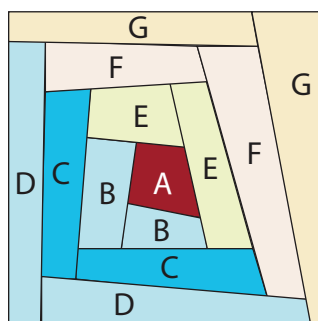


Fig. 6

make 6

9. To make the larger center block, follow Figure 7 for fabric placement and repeat to make one  $13\frac{1}{8}''$  square using the  $5\frac{1}{2}''$  Fabric A square and assorted  $3\frac{1}{2}''$  strips.

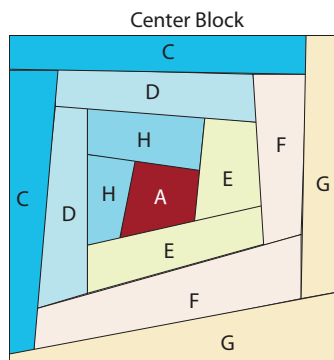


Fig. 7

10. Sew one Fabric J triangle to each side of the center block. Trim the center block to measure  $18\frac{1}{2}''$  square (Fig. 8).

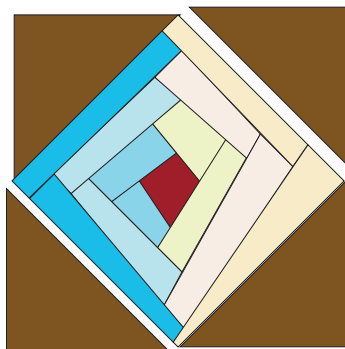


Fig. 8

### Quilt Top Assembly

(Refer to the Quilt Photo while assembling.)

11. Refer to the quilt photo for block placement to sew the blocks together into rows. Sew the rows together to make one  $36\frac{1}{2}''$  square quilt top.

12. Sew one  $2'' \times 36\frac{1}{2}''$  Fabric J strip to each side of the quilt top. Sew one  $2'' \times 39\frac{1}{2}''$  Fabric J strip to the top and bottom of the quilt top.

13. Sew one  $2'' \times 39\frac{1}{2}''$  Fabric F strip to each side of the quilt top. Sew one  $2'' \times 42\frac{1}{2}''$  Fabric F strip to the top and bottom of the quilt top.

14. Sew one  $5\frac{1}{2}'' \times 42\frac{1}{2}''$  Fabric K strip to each side of the quilt top. Sew one  $5\frac{1}{2}'' \times 52\frac{1}{2}''$  Fabric K strip to the top and bottom of the quilt top.

15. Layer and quilt as desired.

16. Sew the (6)  $2\frac{1}{2}'' \times$  WOF Fabric L strips together, end to end with 45-degree seams, to make the binding. Fold this long strip in half lengthwise with wrong sides together and press.

17. Bind as desired.