

# WHY

Panel

Designed by Leanne Anderson



A Free Project Sheet From

 **Henry Glass & Co., Inc.**



facebook

Finished Quilt Size: 52" x 52"  
49 West 37th Street, New York, NY 10018  
tel: 212-686-5194 fax: 212-532-3525  
Toll Free: 800-294-9495  
[www.henryglassfabrics.com](http://www.henryglassfabrics.com)

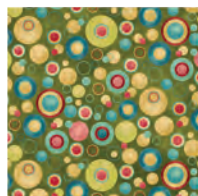


# WHY

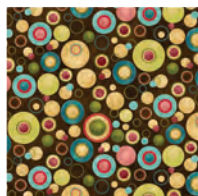
Panel

Finished Quilt Size: 52" x 52"

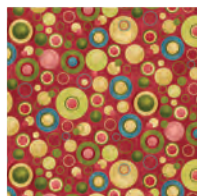
## Fabrics in the Collection



8218-66  
Dots - Green



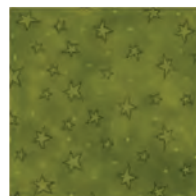
8218-38  
Dots - Brown



8218-22  
Dots - Rose



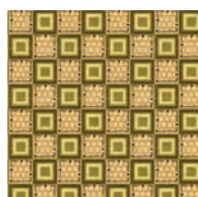
8217-77  
Stars - Teal



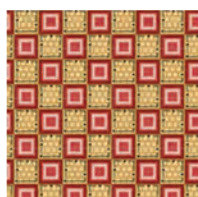
8217-66  
Stars - Green



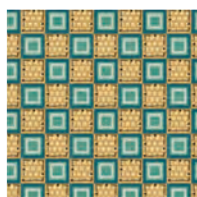
8217-38  
Stars - Brown



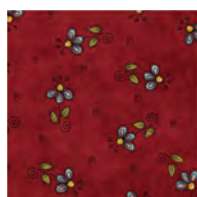
8216-66  
Check - Green



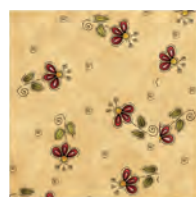
8216-22  
Check - Rose



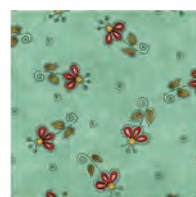
8216-11  
Check - Lt. Teal



8215-88  
Flowers - Red



8215-44  
Flowers - Tan



8215-11  
Flowers - Lt. Teal



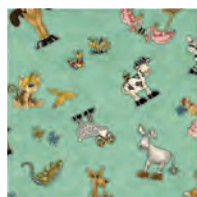
8214-66  
Words - Green



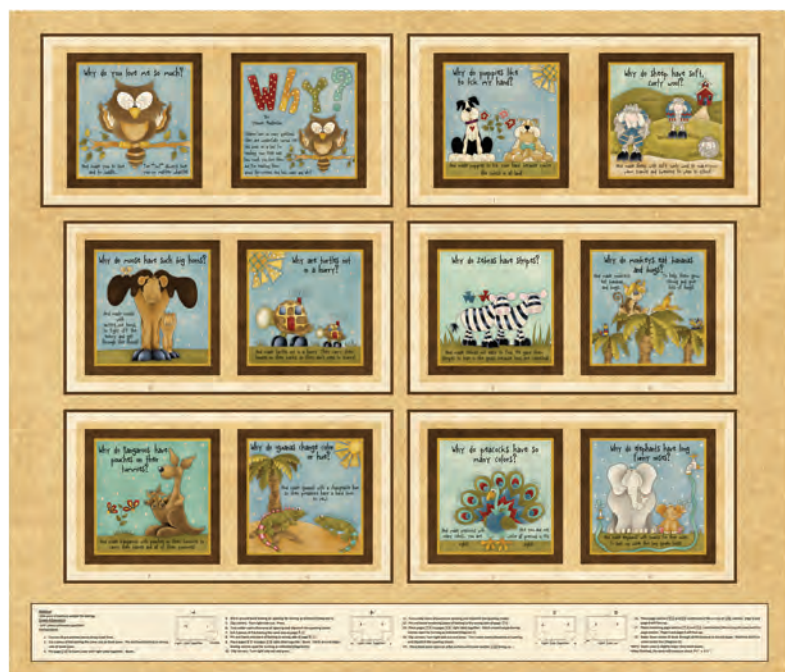
8214-77  
Words - Lt. Teal



8213-88  
Characters - Red



8213-11  
Characters - Lt. Teal



8211P-44  
Book Panel - Tan



8212P-44  
Banner Panel - Tan

### Materials

|           |                       |                   |
|-----------|-----------------------|-------------------|
| 1 panel   | Banner Panel – Tan    | 8212P-44          |
| ½ yard    | Stars – Teal          | 8217-77           |
| ¼ yard    | Dots – Green          | 8218-66           |
| 1 ⅛ yards | Flowers – Tan         | 8215-44           |
| ⅞ yard    | Characters – Lt. Teal | 8213-11           |
| ½ yard    | Words – Lt. Teal      | 8214-77           |
| ¼ yard    | Check – Rose          | 8216-22           |
| ¼ yard    | Flowers – Lt. Teal    | 8215-11           |
| ¼ yard    | Words – Green         | 8214-66           |
| ¼ yard    | Stars – Green         | 8217-66           |
| 1 ⅛ yards | Stars – Brown         | 8217-38 (Binding) |
| ¼ yard    | Check – Green         | 8216-66           |
| ½ yard    | Dots – Rose           | 8218-22           |
| 3 ½ yards | Characters – Red      | 8213-88 (Backing) |

### Cutting Instructions

*Please note: all strips are cut across the width of fabric (WOF) from selvage to selvage edge.*

#### From the Banner Panel - Tan (A), cut:

- Fussy cut (1) 22 ½" x 22 ½" large panel

#### From the Stars - Teal (B), cut:

- (2) 2 ½" x 22 ½" strips
- (2) 2 ½" x 26 ½" strips
- (1) 3 ⅞" x width of fabric (WOF) strip. Sub-cut the strip into (8) 3 ⅞" squares

#### From the Dots - Green (C), cut:

- (4) Template C units

#### From the Flowers - Tan (D), cut:

- (24) Template A units
- (24) Template B units
- (2) 3 ½" x WOF strips. Sub-cut the strips into (16) 3 ½" squares

#### From the Characters - Lt. Teal (E), cut:

- (4) 6 ½" x 24 ½" strips

#### From the Words - Lt. Teal (F), cut:

- (4) Template C units
- (2) 3 ½" x WOF strips. Sub-cut the strips into (16) 3 ½" squares

#### From the Check - Rose (G), cut:

- (4) Template C units

#### From the Flowers - Lt. Teal (H), cut:

- (4) Template C units

#### From the Words - Green (I), cut:

- (4) Template C units

#### From the Stars - Green (J), cut:

- (4) Template C units

#### From the Stars - Brown (K), cut:

- (2) 6 ½" x WOF strips. Sub-cut the strips into (16) 3 ½" x 6 ½" strips.
- (2) 3 ½" x WOF strips. Sub-cut the strips into (16) 3 ½" squares.
- (6) 2 ½" x WOF strips for the binding.

#### From the Check - Green (L), cut:

- (1) 3 ⅞" x WOF strip. Sub-cut the strip into (8) 3 ⅞" squares.

#### From the Dots - Rose (M), cut:

- (3) 2 ½" x WOF strips. Sew the strips together, end to end, and cut (2) 2 ½" x 48 ½" strips.
- (3) 2 ½" x WOF strips. Sew the strips together, end to end, and cut (2) 2 ½" x 52 ½" strips.

#### From the Characters - Red (Backing), cut:

- (2) 60" x WOF strips for the backing. Sew the strips together and trim to make the 60" x 60" back.

### Sewing Instructions

1. Place (1) 3 ⅞" Fabric B square on top of (1) 3 ⅞" Fabric L square, right sides together. Draw a line across the diagonal of the top square (Fig. 1). Sew ¼" away from each side of the drawn diagonal line (Fig. 1). Cut the two squares apart on the drawn diagonal line (Fig. 2) to make two BL units. (Fig. 3). Trim BL units to measure 3 ½" square. Repeat to make (16) 3 ½" BL units total.

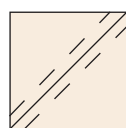


Fig. 1

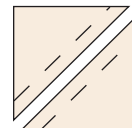


Fig. 2

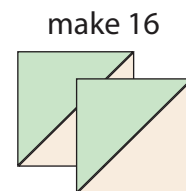


Fig. 3

2. Sew (4) 3 ½" BL units together to make (1) pinwheel block (Fig. 4). Repeat to make (4) pinwheel blocks total.

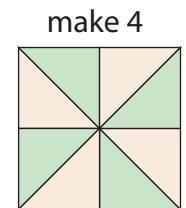


Fig. 4

3. Place (1) 3 ½" Fabric D square on the left side of one 3 ½" x 6 ½" Fabric K strip, right sides together (Fig. 5). Sew across the diagonal of the square from the upper right corner to the lower left corner (Fig. 5). Flip open the triangle formed and press (Fig. 6). Trim away the excess fabric from behind the triangle, leaving a ¼" seam allowance.

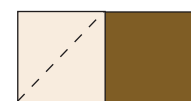


Fig. 5

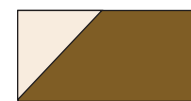


Fig. 6

4. Place (1)  $3\frac{1}{2}$ " Fabric F square on the right side of the  $3\frac{1}{2}$ " x  $6\frac{1}{2}$ " Fabric K strip, right sides together (Fig. 7). Sew across the diagonal of the square from the upper left corner to the lower right corner (Fig. 7). Flip open the triangle formed and press (Fig. 8). Trim away the excess fabric from behind the triangle, leaving a  $\frac{1}{4}$ " seam allowance to complete one DKF unit.

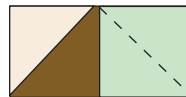


Fig. 7

make 16



Fig. 8

5. Repeat Steps 3-4 to make (16) DKF units total.

6. Follow Figure 9 and sew (4)  $3\frac{1}{2}$ " Fabric K squares, (4) DKF units and (1) pinwheel block together to make (1) corner block. Repeat to make (4) corner blocks total.

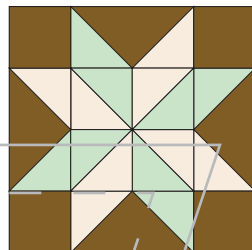


Fig. 9

make 4

7. Sew (1)  $2\frac{1}{2}$ " x  $22\frac{1}{2}$ " Fabric B strip to each side of the  $22\frac{1}{2}$ " x  $22\frac{1}{2}$ " Fabric A panel. Sew (1)  $2\frac{1}{2}$ " x  $26\frac{1}{2}$ " Fabric B strip to the top and bottom of the Fabric A panel. Trim the block to  $24\frac{1}{2}$ " square to complete the center block.

8. Place one Fabric D-Template A triangle on top of one Fabric C-Template C triangle, right sides together, aligning the left sides (Fig. 10). Sew the two triangles together along the left side. Press the smaller triangle open.

9. Place one Fabric D-Template B triangle on top of the Fabric C-Template C triangle, right sides together, aligning the right sides (Fig. 11). Sew the two triangles together along the right side. Press the smaller triangle open to make one triangle block (Fig. 12). Trim to measure  $4\frac{1}{2}$ " x  $6\frac{1}{2}$ ".

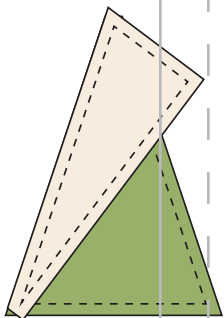


Fig. 10

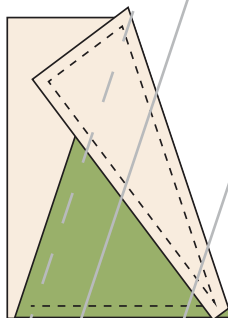


Fig. 11

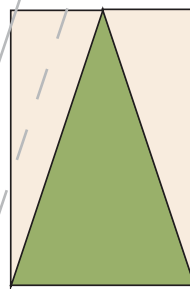


Fig. 12

10. Repeat to make (24) triangle blocks total using the assorted Fabric Template C units, the Fabric D Template A and B units.

11. Sew six assorted triangle blocks together to make (1) pieced strip. Repeat to make (4) pieced strips total.

### Quilt Top Assembly

(Refer to the Quilt Photo while assembling.)

12. Sew (1)  $6\frac{1}{2}$ " x  $24\frac{1}{2}$ " Fabric E strip to the top of (1) pieced strip, lengthwise, to make (1) border strip. Repeat to make (4) border strips total. Sew (1) border strip to each side of center block.

13. Sew (1) corner block to each end of (1) border strip to make the top border. Repeat to make the bottom border. Sew the borders to the center block to make the quilt top.

14. Sew (1)  $2\frac{1}{2}$ " x  $48\frac{1}{2}$ " Fabric M strip to each side of the quilt top. Sew (1)  $2\frac{1}{2}$ " x  $52\frac{1}{2}$ " Fabric M strip to the top and bottom of the quilt top.

15. Layer and quilt as desired.

16. Sew the (6)  $2\frac{1}{2}$ " x WOF Fabric K strips together, end to end with  $45^\circ$  seams, to make the binding. Fold this long strip in half lengthwise with wrong sides together and press.

17. Bind as desired.