

WHY

Book Panel

Designed by Leanne Anderson



A Free Project Sheet From



Henry Glass & Co., Inc.



facebook

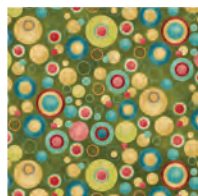
Finished Quilt Size: 47 1/2" x 57 1/2"
 49 West 37th Street, New York, NY 10018
 tel: 212-686-5194 fax: 212-532-3525
 Toll Free: 800-294-9495
 www.henryglassfabrics.com

WHY

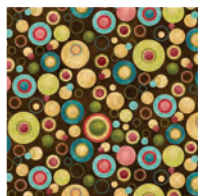
Book Panel

Finished Quilt Size: 47 ½" x 57 ½"

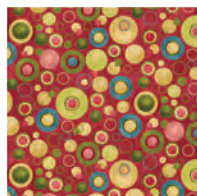
Fabrics in the Collection



8218-66
Dots - Green



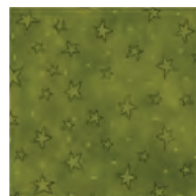
8218-38
Dots - Brown



8218-22
Dots - Rose



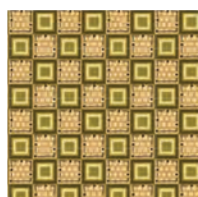
8217-77
Stars - Teal



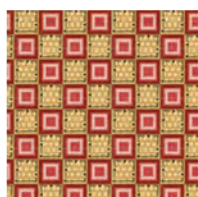
8217-66
Stars - Green



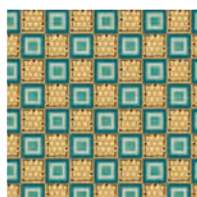
8217-38
Stars - Brown



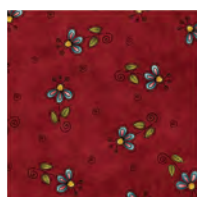
8216-66
Check - Green



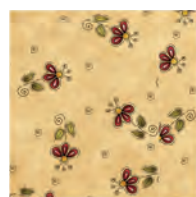
8216-22
Check - Rose



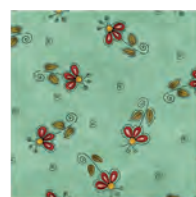
8216-11
Check - Lt. Teal



8215-88
Flowers - Red



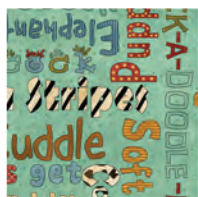
8215-44
Flowers - Tan



8215-11
Flowers - Lt. Teal



8214-66
Words - Green



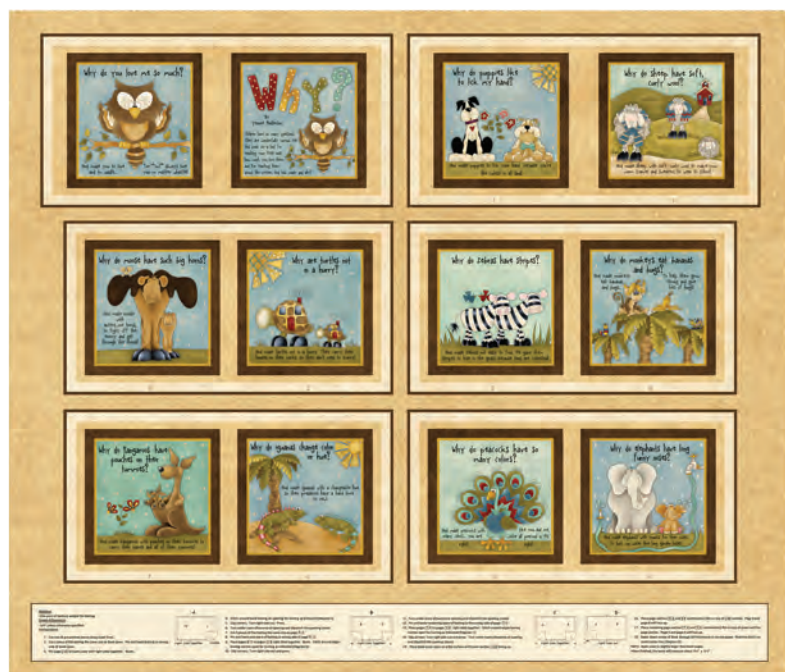
8214-77
Words - Lt. Teal



8213-88
Characters - Red



8213-11
Characters - Lt. Teal



8211P-44
Book Panel - Tan



8212P-44
Banner Panel - Tan

Materials

1 panel	Book Panel – Tan	8211P-44
$\frac{7}{8}$ yard	Flowers – Tan	8215-44
1 yard	Stars – Brown	8217-38 (Binding)
$\frac{1}{3}$ yard	Stars – Teal	8217-77
$\frac{1}{3}$ yard	Flowers – Lt. Teal	8215-11
$\frac{1}{2}$ yard	Flowers – Red	8215-88
$\frac{1}{4}$ yard	Characters – Red	8213-88
$\frac{1}{4}$ yard	Dots – Green	8218-66
$\frac{1}{4}$ yard	Words – Lt. Teal	8214-77
$\frac{1}{4}$ yard	Dots – Brown	8218-38
$\frac{1}{4}$ yard	Check – Rose	8216-22
$\frac{1}{4}$ yard	Words – Green	8214-66
$\frac{1}{4}$ yard	Dots – Rose	8218-22
$\frac{1}{4}$ yard	Check – Green	8216-66
$\frac{1}{4}$ yard	Stars – Green	8217-66
1 panel	Banner Panel - Tan	8212P-44
3 $\frac{1}{4}$ yards	Characters – Lt. Teal	8213-11 (Backing)

Cutting Instructions

Please note: all strips are cut across the width of fabric (WOF) from selvage to selvage edge.

From the Book Panel - Tan (A), cut:

- Fussy cut (12) $7\frac{1}{2}$ " panels.

From the Flowers - Tan (B), cut:

- (3) $7\frac{1}{2}$ " x width of fabric (WOF) strips. Sub-cut the strips into (49) 2 " x $7\frac{1}{2}$ " strips.
- (1) $2\frac{7}{8}$ " x WOF strip. Sub-cut the strip into (8) $2\frac{7}{8}$ " squares.

From the Stars - Brown (C), cut:

- (1) $2\frac{7}{8}$ " x WOF strip. Sub-cut the strip into (8) $2\frac{7}{8}$ " squares.
- (2) 2 " x WOF strips. Sub-cut the strips into (30) 2 " squares.
- (1) $5\frac{1}{2}$ " x WOF strip. Sub-cut the strip into (8) 3 " x $5\frac{1}{2}$ " strips.
- (6) $2\frac{1}{2}$ " x WOF strips for the binding.

From the Stars - Teal (D), cut:

- (1) $3\frac{1}{2}$ " x WOF strip. Sub-cut the strip into (16) $2\frac{1}{2}$ " x $3\frac{1}{2}$ " strips.
- (1) $5\frac{1}{2}$ " x WOF strip. Sub-cut the strip into (4) 3 " x $5\frac{1}{2}$ " strips.

From the Flowers - Lt. Teal (E), cut:

- (1) $5\frac{1}{2}$ " x WOF strip. Sub-cut the strip into (7) 3 " x $5\frac{1}{2}$ " strips and (4) $3\frac{1}{2}$ " squares.

From the Flowers - Red (F), cut:

- (3) $1\frac{1}{2}$ " x WOF strips. Sew the strips together, end to end, and cut (2) $1\frac{1}{2}$ " x $44\frac{1}{2}$ " strips.
- (2) $2\frac{1}{4}$ " x 38 " strips.

From the Characters - Red (G), cut:

- (1) $5\frac{1}{2}$ " x WOF strip. Sub-cut the strip into (4) $5\frac{1}{2}$ " squares.

From the Dots - Green (H), cut:

- (1) $5\frac{1}{2}$ " x WOF strip. Sub-cut the strip into (7) 3 " x $5\frac{1}{2}$ " strips.

From the Words - Lt. Teal (I), cut:

- (1) $5\frac{1}{2}$ " x WOF strip. Sub-cut the strip into (5) 3 " x $5\frac{1}{2}$ " strips.

From the Dots - Brown (J), cut:

- (1) $5\frac{1}{2}$ " x WOF strip. Sub-cut the strip into (9) 3 " x $5\frac{1}{2}$ " strips.

From the Checks - Rose (K), cut:

- (1) $5\frac{1}{2}$ " x WOF strip. Sub-cut the strip into (8) 3 " x $5\frac{1}{2}$ " strips.

From the Words - Green (L), cut:

- (1) $5\frac{1}{2}$ " x WOF strip. Sub-cut the strip into (7) 3 " x $5\frac{1}{2}$ " strips.

From the Dots - Rose (M), cut:

- (1) $5\frac{1}{2}$ " x WOF strip. Sub-cut the strip into (4) 3 " x $5\frac{1}{2}$ " strips.

From the Check - Green (N), cut:

- (1) $5\frac{1}{2}$ " x WOF strip. Sub-cut the strip into (4) 3 " x $5\frac{1}{2}$ " strips.

From the Stars - Green (O), cut:

- (1) $5\frac{1}{2}$ " x WOF strip. Sub-cut the strip into (5) 3 " x $5\frac{1}{2}$ " strips.

From the Banner Panel - Tan (P):

- Fussy cut (4) small $7\frac{1}{2}$ " panels.

From the Characters - Lt. Teal (Backing), cut:

- (2) 56 " x WOF strips for the backing. Sew the strips together and trim to make the 56 " x 66 " back.

Sewing Instructions

1. Place (1) $2\frac{7}{8}$ " Fabric B square on top of (1) $2\frac{7}{8}$ " Fabric C square, right sides together. Draw a line across the diagonal of the top square (Fig. 1). Sew $\frac{1}{4}$ " away from each side of the drawn diagonal line (Fig. 1). Cut the two squares apart on the drawn diagonal line (Fig. 2) to make two BC units (Fig. 3). Trim the BC units to measure $2\frac{1}{2}$ " square. Repeat to make 16 BC units total.

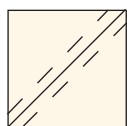


Fig. 1

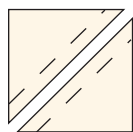


Fig. 2

make 16

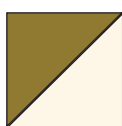


Fig. 3

2. Sew (1) $2\frac{1}{2}$ " x $3\frac{1}{2}$ " Fabric D strip to each side of (1) $3\frac{1}{2}$ " Fabric E square. Sew (1) BC unit to each end of (1) $2\frac{1}{2}$ " x $3\frac{1}{2}$ " Fabric D strip. Repeat to make a second strip. Sew the strips to the top and bottom of the $3\frac{1}{2}$ " Fabric E square to make one corner block (Fig. 4). Repeat to make (4) corner blocks total.

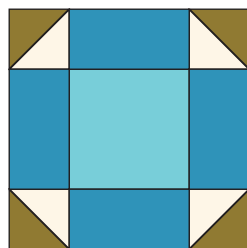


Fig. 4

make 4

Quilt Top Assembly

(Refer to the *Quilt Photo while assembling*.)

3. Sew (4) 2 " x $7\frac{1}{2}$ " Fabric B strips and (5) 2 " Fabric C square together, alternating them, to make (1) sashing strip. Repeat to make (6) sashing strips total.

4. Sew (2) corner blocks, (2) of the (16) $7\frac{1}{2}$ " panels and (5) 2 " x $7\frac{1}{2}$ " Fabric B strips together to make Row One. Repeat to make Row Five.

5. Sew (5) 2 " x $7\frac{1}{2}$ " Fabric B strips and (4) assorted $7\frac{1}{2}$ " panels together, alternating them, to make Row Two. Repeat to make Rows Three and Four.

6. Sew the (5) rows together, in numerical order, alternating them with the (6) sashing strips to make the quilt top.

7. Sew (1) $1\frac{1}{2}$ " x $44\frac{1}{2}$ " Fabric F strip to each side of the quilt top. Sew (1) $2\frac{1}{4}$ " x 38 " Fabric F strip to the top and bottom of the quilt top.

8. Sew (19) assorted 3 " x $5\frac{1}{2}$ " strips together, lengthwise, to make one scrappy border. Repeat to make a second scrappy border. Sew the borders to each side of the quilt top.

9. Sew (15) assorted 3 " x $5\frac{1}{2}$ " strips together, lengthwise. Sew (1) $5\frac{1}{2}$ " Fabric G square to each end of the sewn strips to make the top border. Repeat to make the bottom border. Sew the borders to the quilt top.

10. Layer and quilt as desired.

11. Sew the (6) $2\frac{1}{2}$ " x WOF Fabric C strips together, end to end with 45-degree seams, to make the binding. Fold this long strip in half lengthwise with wrong sides together and press.

12. Bind as desired.