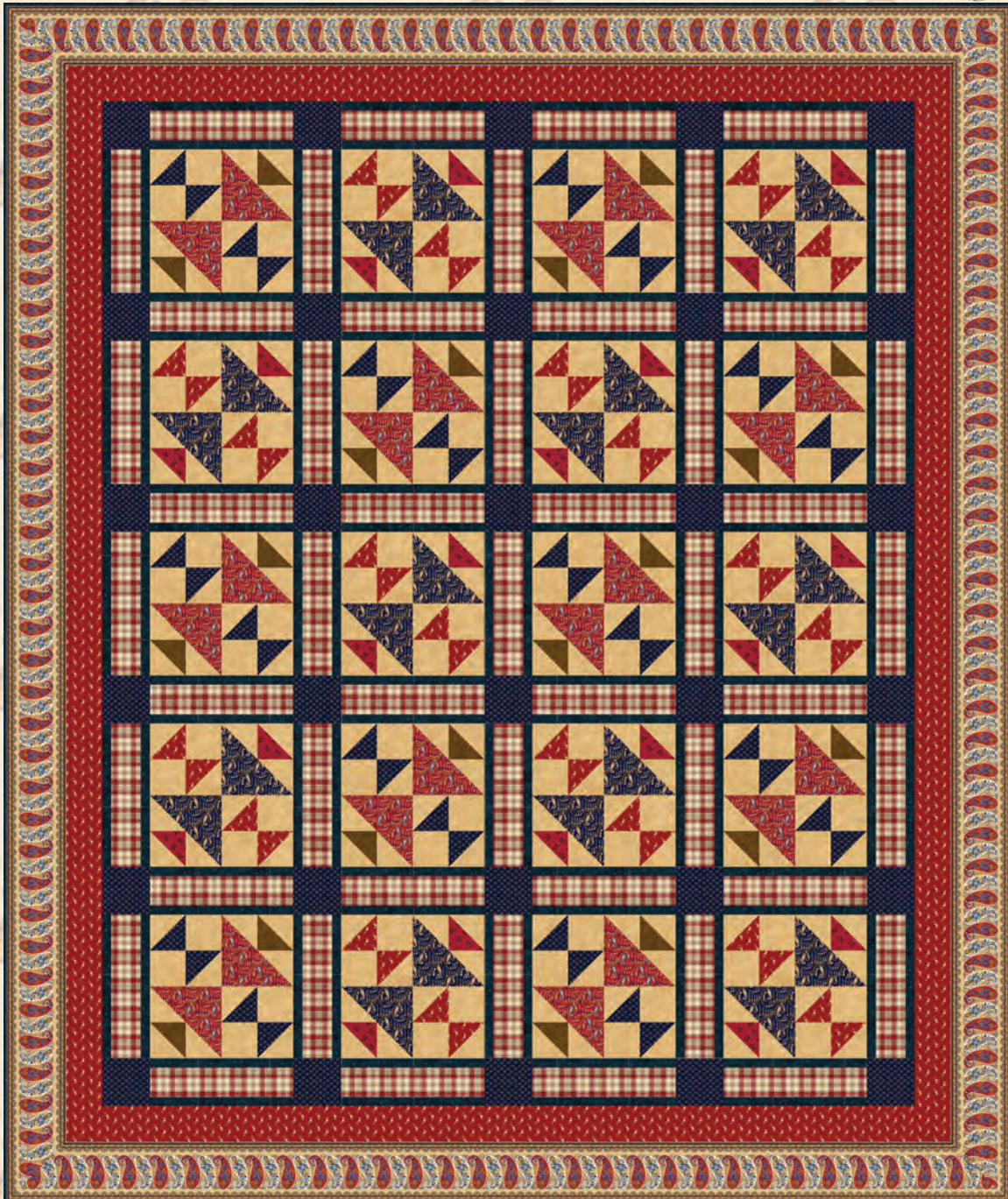


# WHISPERS OF WISDOM

By Leanne & Kaytlan Anderson



Pieced

A Free Project Sheet From



Henry Glass & Co., Inc.



facebook

Finished Quilt Size: 84" x 100"  
49 West 37th Street, New York, NY 10018  
tel: 212-686-5194 fax: 212-532-3525  
Toll Free: 800-294-9495  
[www.henryglassfabrics.com](http://www.henryglassfabrics.com)

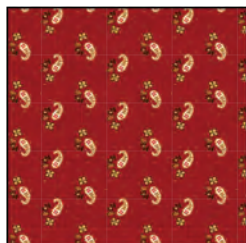


# WHISPERS OF WISDOM

Finished Quilt Size: 84" x 100"

Pieced

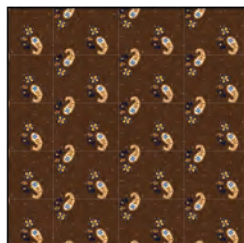
## Fabrics in the Collection



Tiny Paisley - Red  
8342-88



Tiny Paisley - Cream  
8342-44



Tiny Paisley - Brown  
8342-38



Fern Toss - Red  
8341-88



Fern Toss - Cream  
8341-44



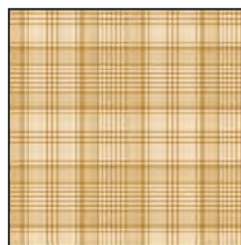
Fern Toss - Gold  
8341-33



Plaid - Navy  
8340-77



Plaid - Cream/Red  
8340-48



Plaid - Cream  
8340-44



Paisley - Red  
8339-88



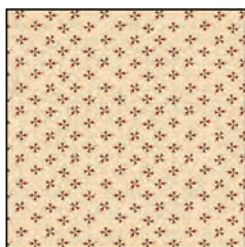
Paisley - Navy  
8339-77



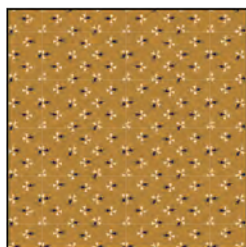
Paisley - Cream  
8339-44



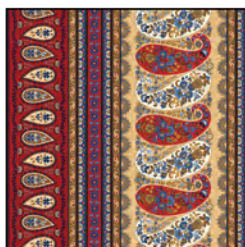
Pinwheel - Navy  
8338-77



Pinwheel - Cream  
8338-44



Pinwheel - Gold  
8338-33



Stripe - Red  
8343-88



Whispers of Wisdom Panel - Red  
8337P-88

## Select Fabrics from the Starry Basics Collection



Starry - Blue  
8294-77



Starry - Tan  
8294-44



Starry - Brown  
8294-38

## Materials

½ yard	Paisley – Red (A)	8339-88
¼ yard	Starry – Brown (B)	8294-38
⅞ yard	Pinwheel – Navy (C)	8338-77
2 yards	Starry – Tan (D)	8294-44
½ yard	Paisley – Navy (E)	8339-77
¼ yard	Fern Toss – Red (F)	8341-88
1 ½ yards	Plaid – Cream/Red (G)	8340-48
2 yards	Starry – Blue (H)	8294-77
1 ¼ yards	Tiny Paisley – Red (I)	8342-88
3 yards	Stripe – Red (J)	8343-88
8 yards	Fern Toss – Gold (Backing)	8341-33

## Cutting Instructions

*Please note: all strips are cut across the width of fabric (WOF) from selvage to selvage edge unless otherwise noted.*

### From the Paisley - Red (A), cut:

- (2) 6 ⅞" x WOF strips. Sub-cut strips into (10) 6 ⅞" squares. Cut the squares across one diagonal to make (20) triangles.

### From the Starry - Brown (B), cut:

- (1) 3 ⅞" x WOF strip. Sub-cut strip into (10) 3 ⅞" squares.

### From the Pinwheel - Navy (C), cut:

- (2) 3 ⅞" x WOF strips. Sub-cut strips into (20) 3 ⅞" squares.
- (4) 4 ½" x WOF strips. Sub-cut strips into (30) 4 ½" squares.

### From the Starry - Tan (D), cut:

- (10) 3 ⅞" x WOF strips. Sub-cut strips into (100) 3 ⅞" squares. Cut (40) squares across one diagonal to make (80) triangles.
- (7) 3 ½" x WOF strips. Sub-cut strips into (80) 3 ½" squares.

### From the Paisley - Navy (E), cut:

- (2) 6 ⅞" x WOF strips. Sub-cut strips into (10) 6 ⅞" squares. Cut the squares across one diagonal to make (20) triangles.

### From the Fern Toss - Red (F), cut:

- (1) 3 ⅞" x WOF strip. Sub-cut strip into (10) 3 ⅞" squares.

### From the Plaid - Cream/Red (G), cut:

- (17) 3" x WOF strips.

### From the Starry - Blue (H), cut:

- (34) 1 ¼" x WOF strips.
- (10) 2 ½" x WOF strips for the binding.

### From the Tiny Paisley - Red (I), cut:

- (2) 3 ⅞" x WOF strips. Sub-cut strips into (20) 3 ⅞" squares.
- (5) 3 ½" x WOF strips. Sew the strips together, end to end with diagonal seams, and cut (2) 3 ½" x 84 ½" strips.
- (4) 3 ½" x WOF strips. Sew the strips together, end to end with diagonal seams, and cut (2) 3 ½" x 74 ½" strips.

### From the Stripe - Red (J), cut:

- (2) 5 ½" x 104" LOF, center on side stripe.
- (2) 5 ½" x 88" LOF, center on side stripe.

### From the Fern Toss - Gold (Backing), cut:

- (3) 92" x WOF strips for the backing. Sew the strips together and trim to make the 92" x 108" back.

## Sewing Instructions

1. Place (1) 3 ⅞" Fabric C square on top of (1) 3 ⅞" Fabric D square, right sides together. Draw a line across the diagonal of the top square (Fig. 1). Sew ¼" away from each side of the drawn diagonal line (Fig. 1). Cut the two squares apart on the drawn diagonal line (Fig. 2) to make (2) CD units (Fig. 3). Trim the CD units to measure 3 ½" square. Repeat to make (40) CD units total.



Fig. 1



Fig. 2

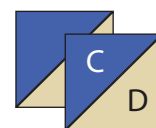


Fig. 3

2. Repeat Step 1 using (10) 3 ⅞" Fabric B squares and (10) 3 ⅞" Fabric D squares to make (20) 3 ½" BD units.
3. Repeat Step 1 using (20) 3 ⅞" Fabric I squares and (20) 3 ⅞" Fabric D squares to make (40) 3 ½" ID units.
4. Repeat Step 1 using (10) 3 ⅞" Fabric F squares and (10) 3 ⅞" Fabric D squares to make (20) 3 ½" FD units.
5. Sew (1) Fabric A triangle, (2) Fabric D triangles and (1) BD unit to make (1) A-block (Fig. 4). Repeat to make (20) A-blocks total.
6. Sew (2) CD units and (2) 3 ½" Fabric D squares together to make (1) C-block (Fig. 5). Repeat to make (20) C-blocks total.

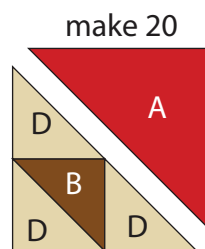


Fig. 4

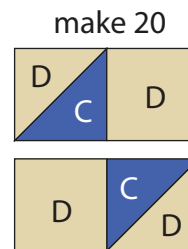


Fig. 5



7. Sew (2) A-blocks and (2) C-blocks together to make (1) Block One (Fig. 6). Repeat to make (10) Block Ones total.

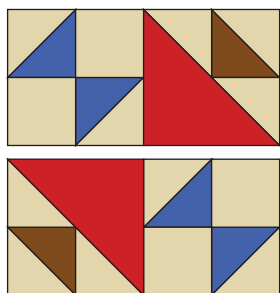


Fig. 6 make 10

8. Sew (1) Fabric E triangle, (2) Fabric D triangles and (1) FD unit to make (1) E-block (Fig. 7). Repeat to make (20) E-blocks total.

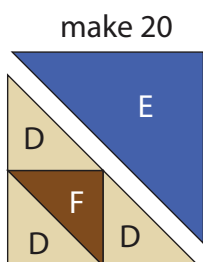


Fig. 7

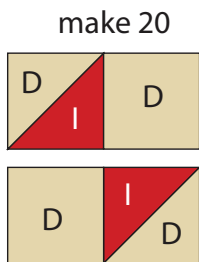


Fig. 8

10. Sew (2) E-blocks and (2) I-blocks together to make (1) Block Two (Fig. 9). Repeat to make (10) Block Twos total.

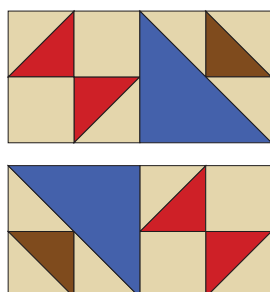


Fig. 9 make 10

11. Sew (1) 1 1/4" x WOF Fabric H strip to each side of (1) 3" x WOF Fabric G strip to make (1) HG strip set. Repeat to make (17) HG strip sets total. Sub-cut the HG strip sets into (49) 4 1/2" x 12 1/2" HG units (Fig. 10).

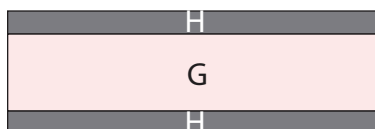


Fig. 10 make 49

### Quilt Top Assembly

(Refer to the Quilt Photo while assembling.)

12. Sew (5) 4 1/2" Fabric C squares and (4) HG units together, alternating them, to make (1) sashing row. Repeat to make (6) sashing rows total.

13. Sew (5) HG units, (2) Block Ones and (2) Block Twos together to make (1) row. Repeat to make (5) rows total.

14. Sew the (5) rows, rotating every other row 180 degrees, and (6) sashing rows, together to make the quilt top.

15. Sew (1) 3 1/2" x 84 1/2" Fabric I strip to each side of the quilt top. Sew (1) 3 1/2" x 74 1/2" Fabric I strip to the top and to the bottom of the quilt top.

16. Center one 5 1/2" x 104" Fabric J strip on one side of the quilt top. Start sewing the strip a 1/4" from the top edge of the quilt top and stop a 1/4" from the bottom edge. **DO NOT TRIM THE EXCESS.** Repeat with the opposite side.

17. Repeat Step 1 to sew one 5 1/2" x 88" strip to the top and bottom of the quilt top, making sure to stop and start 1/4" away from each end of the quilt top.

18. To miter each corner, fold the quilt top on a diagonal wrong side together. This should line up the strips from adjacent sides (Fig. 11).

19. Starting at the sewn seam (represented by the arrow in Figure 11) draw a 45-degree line out to the edge of the fabric. Sew on the drawn line. Trim the excess fabric leaving a 1/4" seam.

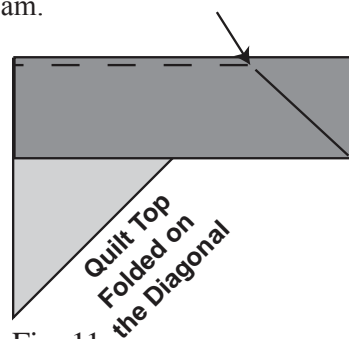


Fig. 11

20. Repeat this step with the remaining corners.

21. Layer and quilt as desired.

22. Sew the (10) 2 1/2" x WOF Fabric H strips together, end to end with 45-degree seams, to make the binding. Fold this long strip in half lengthwise with wrong sides together and press.

23. Bind as desired.