

# WHISPERS OF WISDOM

By Leanne & Kaytlan Anderson



Panel

A Free Project Sheet From

 **Henry Glass & Co., Inc.**



facebook

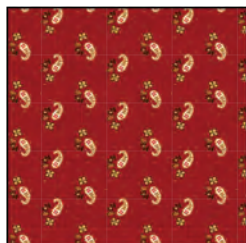
Finished Quilt Size: 54" x 72"  
 49 West 37th Street, New York, NY 10018  
 tel: 212-686-5194 fax: 212-532-3525  
 Toll Free: 800-294-9495  
 www.henryglassfabrics.com

# WHISPERS OF WISDOM

Finished Quilt Size: 54" x 72"

Panel

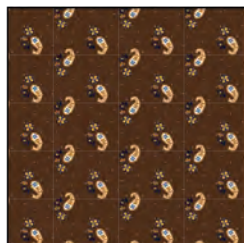
## Fabrics in the Collection



Tiny Paisley - Red  
8342-88



Tiny Paisley - Cream  
8342-44



Tiny Paisley - Brown  
8342-38



Fern Toss - Red  
8341-88



Fern Toss - Cream  
8341-44



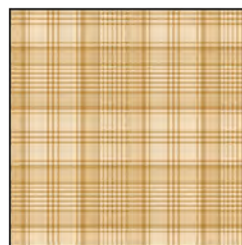
Fern Toss - Gold  
8341-33



Plaid - Navy  
8340-77



Plaid - Cream/Red  
8340-48



Plaid - Cream  
8340-44



Paisley - Red  
8339-88



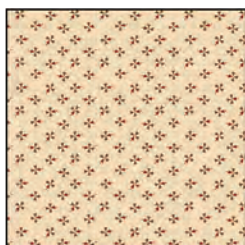
Paisley - Navy  
8339-77



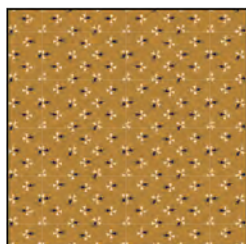
Paisley - Cream  
8339-44



Pinwheel - Navy  
8338-77



Pinwheel - Cream  
8338-44



Pinwheel - Gold  
8338-33



Stripe - Red  
8343-88



Whispers of Wisdom Panel - Red  
8337P-88

## Select Fabrics from the Starry Basics Collection



Starry - Blue  
8294-77



Starry - Tan  
8294-44



Starry - Brown  
8294-38

## Materials

1 panel	Whispers of Wisdom Panel – Red (A)	8337P-88
1 ¼ yards	Pinwheel – Navy (B)	8338-77
¾ yard	Pinwheel – Gold (C)	8338-33
½ yard	Fern Toss – Cream (D)	8341-44
⅓ yard	Stripe – Red (E)	8343-88
1 ¼ yards	Starry – Brown (F)	8294-38
⅓ yard	Fern Toss – Red (G)	8341-88
½ yard	Tiny Paisley – Cream (H)	8342-44
1 ⅓ yards	Plaid – Navy (I)	8340-77
¼ yard	Fern Toss – Gold (J)	8341-33
1 yard	Paisley – Cream (K)	8339-44
¼ yard	Tiny Paisley – Red (L)	8342-88
3 ½ yards	Plaid – Cream/Red (Backing)	8340-48

## Cutting Instructions

*Please note: all strips are cut across the width of fabric (WOF) from selvage to selvage edge unless otherwise noted.*

### From the Whispers of Wisdom Panel - Red (A):

- Fussy cut (1) panel, approximately 20 ½" square, centered on the large panel.
- Fussy cut (6) panels, each approximately 6 ½" x 9 ½" and centered on a small panel.

### From the Pinwheel - Navy (B), cut:

- (1) 3" x WOF strip. Sub-cut strip into (2) 3" x 20 ½" strips.
- (2) 3" x 25 ½" strips.
- (1) 6 ½" x WOF strip. Sub-cut strip into (12) 2 ½" x 6 ½" strips.
- (1) 13 ½" x WOF strip. Sub-cut strip into (12) 2" x 13 ½" strips.
- (2) 4 ½" x WOF strips. Sub-cut strips into (16) 4 ½" squares.

### From the Pinwheel - Gold (C), cut:

- (4) 2 ½" x WOF strips.

### From the Fern Toss - Cream (D), cut:

- (4) 2 ½" x WOF strips.
- (1) 4 ½" x WOF strip. Sub-cut strip into (2) 2 ½" x 8 ½" strips.

### From the Stripe - Red (E), cut:

- (1) 8 ½" x WOF strip. Sub-cut strip into (4) 8 ½" squares.

### From the Starry - Brown (F), cut:

- (6) 1 ½" x 42 ½" strips.
- (4) 1 ½" x WOF strips. Sew the strips together, end to end with diagonal seams, and cut (2) 1 ½" x 62 ½" strips.
- (1) 1 ½" x WOF strip. Sub-cut strip into (4) 1 ½" x 8 ½" strips.
- (2) 1" x WOF strips. Sub-cut strips into (8) 1" x 8 ½" strips.
- (7) 2 ½" x WOF strips for the binding.

### From the Fern Toss - Red (G), cut:

- (1) 4 ⅞" x WOF strip. Sub-cut strip into (8) 4 ⅞" squares.

### From the Tiny Paisley - Cream (H), cut:

- (1) 4 ⅞" x WOF strip. Sub-cut strip into (8) 4 ⅞" squares.
- (1) 4 ½" x WOF strip. Sub-cut strip into (1) 4 ½" x 8 ½" strip.

### From the Plaid - Navy (I), cut:

- (6) 5 ½" x WOF strips. Sew the strips together, end to end with diagonal seams, and cut (2) 5 ½" x 62 ½" strips and (2) 5 ½" x 44 ½" strips.
- (1) 6 ⅞" x WOF strip. Sub-cut strip into (1) 6 ⅞" square.

### From the Fern Toss - Gold (J), cut:

- (1) 6 ⅞" x WOF strip. Sub-cut strip into (1) 6 ⅞" square and (4) 5 ½" squares.

### From the Paisley - Cream (K), cut:

- (1) 6 ⅞" x WOF strip. Sub-cut strip into (1) 6 ⅞" square.

### From the Tiny Paisley - Red (L), cut:

- (1) 6 ⅞" x WOF strip. Sub-cut strip into (1) 6 ⅞" square and (2) 2 ½" x 8 ½" strips.

### From the Plaid - Cream/Red (Backing), cut:

- (2) 62" x WOF strips for the backing. Sew the strips together and trim to make the 62" x 80" back.

## Sewing Instructions

1. Place (1) 4 ⅞" Fabric H square on top of (1) 4 ⅞" Fabric G square, right sides together. Draw a line across the diagonal of the top square (Fig. 1). Sew ¼" away from each side of the drawn diagonal line (Fig. 1). Cut the two squares apart on the drawn diagonal line (Fig. 2) to make two HG units (Fig. 3). Trim the HG units to measure 4 ½" square. Repeat to make (16) HG units total.

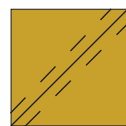


Fig. 1



Fig. 2

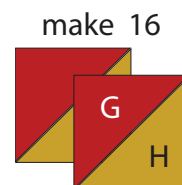


Fig. 3

2. Sew (4) HG units together to make (1) pinwheel unit (Fig. 4). Repeat to make (4) pinwheel units total. Sew (2) pinwheel units together to make (1) pinwheel strip. Repeat to make a second pinwheel strip.

3. Sew (1) 1 ½" x 8 ½" Fabric F strip to each side of the pinwheel strip to make (1) pinwheel block. Repeat to make a second pinwheel block.

4. Repeat Step 1 using (1) 6 ⅞" Fabric I square and (1) 6 ⅞" Fabric J square to make (2) 6 ½" IJ units.

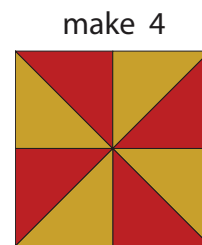


Fig. 4

5. Repeat Step 1 using (1) 6  $\frac{7}{8}$ " Fabric K square and (1) 6  $\frac{7}{8}$ " Fabric L square to make (2) 6  $\frac{1}{2}$ " KL units.

6. Sew the (2) IJ units and (2) KL units together, alternating them, to make (1) KJ strip (Fig. 6).

7. Sew (2) 2  $\frac{1}{2}$ " x 8  $\frac{1}{2}$ " Fabric L strip, (2) 2  $\frac{1}{2}$ " x 8  $\frac{1}{2}$ " Fabric D strips and (1) 4  $\frac{1}{2}$ " x 8  $\frac{1}{2}$ " Fabric H strip together to make (1) LL strip.

8. Place 4  $\frac{1}{2}$ " Fabric B square on the top left corner of (1) 8  $\frac{1}{2}$ " Fabric E square, right sides together (Fig. 5). Sew across the diagonal of the smaller square from the upper right corner to the lower left corner (Fig. 5). Flip open the triangle formed and press (Fig. 6). Trim away the excess fabric from behind the triangle  $\frac{1}{4}$ " away from the sewn seam.

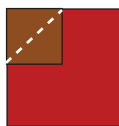


Fig. 5

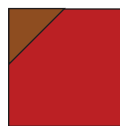


Fig. 6

9. Follow Figure 7 for the seam direction to add a 4  $\frac{1}{2}$ " Fabric B square to each of the remaining corners of the 8  $\frac{1}{2}$ " Fabric E square to make (1) BEB unit (Fig. 8).

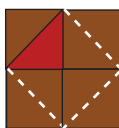


Fig. 7



Fig. 8

10. Repeat Steps 8-9 to make (4) BEB units total.

11. Sew (1) 1" x 8  $\frac{1}{2}$ " Fabric F strip to each side of (1) BEB unit to make (1) BEB block. Repeat to make (4) BEB blocks total.

12. Sew (2) 2  $\frac{1}{2}$ " x WOF Fabric C strips and (2) 2  $\frac{1}{2}$ " x WOF Fabric D strips together, alternating them, to make (1) CD strip set. Repeat to make a second CD strip set. Sub-cut the CD strip sets into (24) 2  $\frac{1}{2}$ " x 8  $\frac{1}{2}$ " CD strips.

13. Sew (4) CD strips together lengthwise, alternating the orientation, together to make (1) checkerboard block (Fig. 9). Repeat to make (6) checkerboard blocks total.

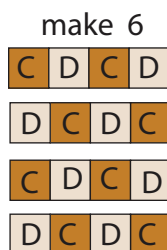


Fig. 9

14. Sew (1) 2  $\frac{1}{2}$ " x 6  $\frac{1}{2}$ " Fabric B strip to each side of (1) 6  $\frac{1}{2}$ " x 9  $\frac{1}{2}$ " Fabric A panel. Sew (1) 2" x 13  $\frac{1}{2}$ " Fabric B strip to the top and to the bottom of the Fabric A panel. Trim the block to measure 8  $\frac{1}{2}$ " x 12  $\frac{1}{2}$ " to make (1) Block One. Repeat to make (6) Block Ones total.

15. Sew (1) 3" x 20  $\frac{1}{2}$ " Fabric B strip to each side of the 20  $\frac{1}{2}$ " square Fabric A panel. Sew (1) 3" x 25  $\frac{1}{2}$ " Fabric B strip to the top and to the bottom of the Fabric A panel. Trim the block to measure 24  $\frac{1}{2}$ " square to make (1) Block Two.

### Quilt Top Assembly

(Refer to the Quilt Photo while assembling.)

16. Sew (1) Block One to each side of the pinwheel strip to make Row One. Repeat to make Row Five.

17. Sew (3) checkerboard blocks and (2) BEB blocks together, alternating them, to make Row Two. Repeat to make Row Four.

18. Sew (1) Block Two, (2) Block Ones, (1) KJ strip and (1) LL strip together to make Row Three.

19. Sew the five rows, in numerical order and (6) 1  $\frac{1}{2}$ " x 42  $\frac{1}{2}$ " Fabric F strips together, alternating them, to make the quilt top.

20. Sew (1) 1  $\frac{1}{2}$ " x 62  $\frac{1}{2}$ " fabric F strip to each side of the quilt top.

21. Sew (1) 5  $\frac{1}{2}$ " x 62  $\frac{1}{2}$ " Fabric I strip to each side of the quilt top. Sew (1) 5  $\frac{1}{2}$ " Fabric J squares to each end of (1) 5  $\frac{1}{2}$ " x 44  $\frac{1}{2}$ " Fabric I strip. Repeat to make a second strip. Sew the strips to the top and to the bottom of the quilt top.

22. Layer and quilt as desired.

23. Sew the (7) 2  $\frac{1}{2}$ " x WOF Fabric F strips together, end to end with 45-degree seams, to make the binding. Fold this long strip in half lengthwise with wrong sides together and press.

24. Bind as desired.