

# To Be or Not To Be



A Free Project Sheet  
**NOT FOR RESALE**

By Leanne & Kaytlyn Anderson



Quilt Design by Leanne & Kaytlyn Anderson

Quilt 2

Skill Level: Beginner



facebook

Finished Quilt Size: 36" x 68"  
49 West 37th Street, New York, NY 10018  
tel: 212-686-5194 fax: 212-532-3525  
Toll Free: 800-294-9495  
www.henryglassfabrics.com

# TO BE OR NOT TO BE Quilt 2

Finished Quilt Size: 36" x 68"

## Fabrics in the Collection



Growth Chart Panel 24" x 44"  
Lt. Gray – 8808P-11



Blocks Panel - Navy  
8809P-77



Tossed Characters - Lt. Gray  
8810-11



Tossed Characters - Pink  
8810-22



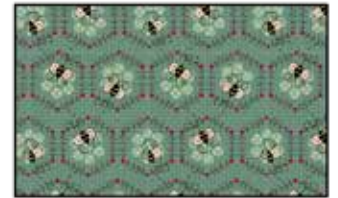
Tossed Characters - Teal  
8810-77



Words - Lt. Gray  
8811-11



Words - Navy  
8811-77



Bee Honeycomb - Lt. Teal  
8812-17



Bee Honeycomb - Pink  
8812-22



Bee Honeycomb - Yellow  
8812-33



Border Stripe - Lt. Gray  
8813-11

Select Fabrics from the  
Starry Basics Collection



Brown  
8294-38



Indigo  
8294-77



Red  
8294-88

Select Fabrics from the Houndstooth Basics Collection



Orange  
8624-35



Brown  
8624-38



Tan  
8624-44



Green  
8624-66



Lt. Teal  
8624-76



Teal  
8624-77



Rose  
8624-82



Red  
8624-88

### Materials

1 panel	Growth Chart Panel 24" x 44" - Lt. Gray (A)	8808P-11
3/4 yard	Starry Basics - Indigo (B)	8294-77
1 yard	Border Stripe - Lt. Gray (C)	8813-11
1/4 yard	Houndstooth Basics - Green (D)	8624-66
1/4 yard	Tossed Characters - Pink (E)	8810-22
1/4 yard	Words - Lt. Gray (F)	8811-11
1/4 yard	Houndstooth Basics - Lt. Teal (G)	8624-76
1/4 yard	Bee Honeycomb - Yellow (H)	8812-33
1/4 yard	Houndstooth Basics - Rose (I)	8624-82
1/4 yard	Words - Navy (J)	8811-77
1/4 yard	Starry Basics - Brown (K)	8294-38
1/4 yard	Houndstooth Basics - Red (L)	8624-88
1/4 yard	Bee Honeycomb - Lt. Teal (M)	8812-17
1/4 yard	Tossed Characters - Lt. Gray (N)	8810-11
1/2 yard	Tossed Characters - Teal (O)	8810-77*
2 1/2 yards	Tossed Characters - Teal (Backing)	8810-77

\*Includes binding

### Cutting Instructions

Please note: all strips are cut across the width of fabric (WOF) from selvage to selvage edge unless otherwise noted.

#### From the Growth Chart Panel 24" x 44" - Lt. Gray (A), fussy cut:

- (1) 22 1/2" x 43" panel.

#### From the Starry Basics - Indigo (B), cut:

- (2) 2" x 43" WOF strips.
- (2) 2" x 25 1/2" WOF strips.
- (4) 2 1/2" x WOF strips. Sew the strips together end to end with diagonal seams and cut (2) 2 1/2" x 64 1/2" strips.
- (2) 2 1/2" x 36 1/2" WOF strips.

#### From the Border Stripe - Lt. Gray (C), fussy cut:

- (2) 10 1/2" x 32 1/2" Length of Fabric (LOF) strips.

#### From the Houndstooth Basics - Green (D), cut:

- (1) 4 1/2" x WOF strip. Sub-cut strip into (2) 4 1/2" squares.

#### From the Tossed Characters - Pink (E), cut:

- (1) 4 1/2" x WOF strip. Sub-cut strip into (2) 4 1/2" squares.

#### From the Words - Lt. Gray (F), cut:

- (1) 4 1/2" x WOF strip. Sub-cut strip into (2) 4 1/2" squares.

#### From the Houndstooth Basics - Lt. Teal (G), cut:

- (1) 4 1/2" x WOF strip. Sub-cut strip into (2) 4 1/2" squares.

#### From the Bee Honeycomb - Yellow (H), cut:

- (1) 4 1/2" x WOF strip. Sub-cut strip into (2) 4 1/2" squares.

#### From the Houndstooth Basics - Rose (I), cut:

- (1) 4 1/2" x WOF strip. Sub-cut strip into (2) 4 1/2" squares.

#### From the Words - Navy (J), cut:

- (1) 4 1/2" x WOF strip. Sub-cut strip into (2) 4 1/2" squares.

#### From the Starry Basics - Brown (K), cut:

- (1) 4 1/2" x WOF strip. Sub-cut strip into (2) 4 1/2" squares.

#### From the Houndstooth Basics - Red (L), cut:

- (1) 4 1/2" x WOF strip. Sub-cut strip into (2) 4 1/2" squares.

#### From the Bee Honeycomb - Lt. Teal (M), cut:

- (1) 4 1/2" x WOF strip. Sub-cut strip into (2) 4 1/2" squares.

#### From the Tossed Characters - Lt. Gray (N), cut:

- (1) 4 1/2" x WOF strip. Sub-cut strip into (2) 4 1/2" squares.

#### From the Tossed Characters - Teal (O), cut:

- (6) 2 1/2" x WOF strips for the binding.

#### From the Tossed Characters - Teal (Backing), cut:

- (2) 44" x WOF strips for the backing. Sew the strips together and trim to make the 44" x 76" back.

### Sewing Instructions

1. Sew (1) 2" x 43" Fabric B strip to each side of the 22 1/2" x 43" Fabric A panel. Sew (1) 2" x 25 1/2" Fabric B strip to the top and to the bottom of the Fabric A panel. Trim the block to measure 24 1/2" x 44 1/2" to make the Center Block (Fig. 1).

2. Sew (11) assorted 4 1/2" squares together to make (1) pieced strip (Fig. 2). Repeat to make a second pieced strip.

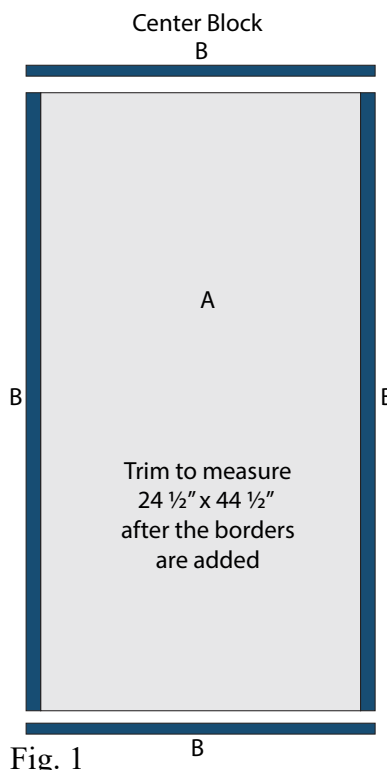


Fig. 1

Unit 1  
make 2



Fig. 2

# TO BE OR NOT TO BE

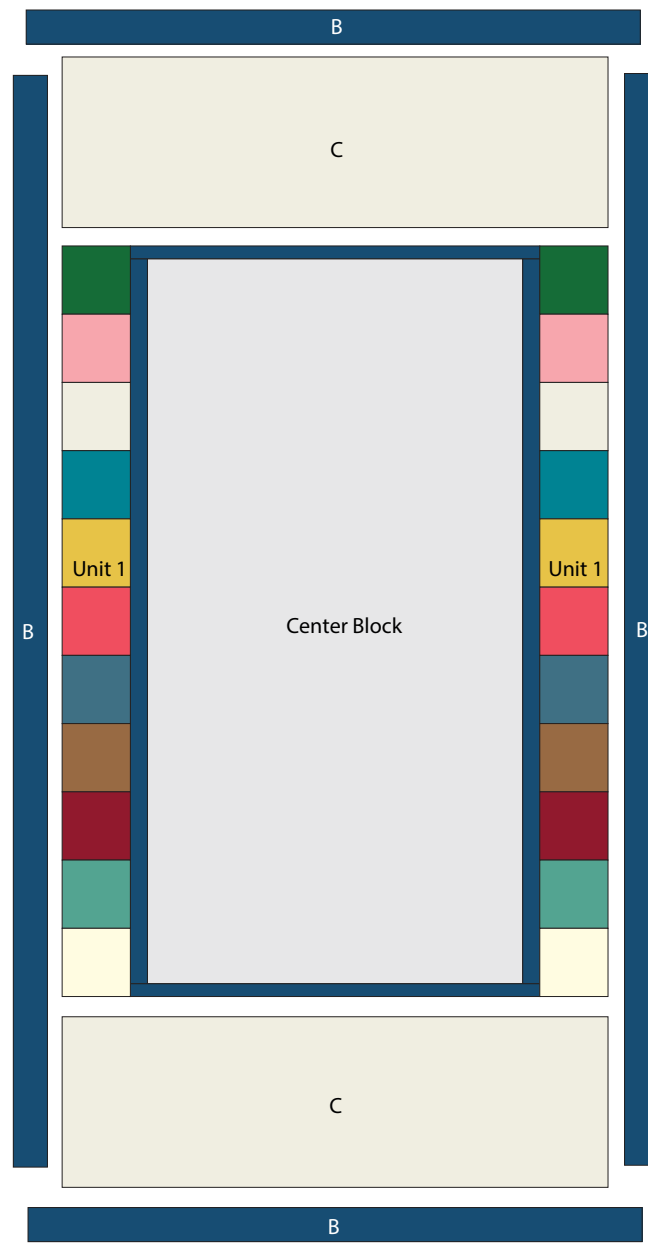
Quilt 2

Page 2

## Quilt Top Assembly

(Refer to the *Quilt Layout while assembling.*)

3. Sew (1) pieced strip to each side of the Center Block.
4. Sew (1) 10 ½" x 32 ½" Fabric C strip to the top and to the bottom of the Center Block.
5. Sew (1) 2 ½" x 64 ½" Fabric B strip to each side of the Center Block. Sew (1) 2 ½" x 36 ½" Fabric B strip to the top and to the bottom of the Center Block to make the quilt top.
6. Layer and quilt as desired.
7. Sew the (6) 2 ½" x WOF Fabric O strips together, end to end with 45-degree seams, to make the binding. Fold this long strip in half lengthwise with wrong sides together and press.
8. Bind as desired.



Quilt Layout

Every effort has been made to ensure that all projects are error free. All the information is presented in good faith, however no warranty can be given nor results guaranteed as we have no control over the execution of instructions. Therefore, we assume no responsibility for the use of this information or damages that may occur as a result. When errors are brought to our attention, we make every effort to correct and post a revision as soon as possible. Please make sure to check [www.henryglassfabrics.com](http://www.henryglassfabrics.com) for pattern updates prior to starting the project. We also recommend that you test the project prior to cutting for kits. Finally, all free projects are intended to remain free to you and are not for resale.