

Pet Rescue

By Leanne Anderson



Pet Bed

Skill Level: Advanced Beginner

A Free Project Sheet From

 **Henry Glass & Co., Inc.**



facebook

Finished Pet Bed Size: 32" dia., 4" thick
49 West 37th Street, New York, NY 10018
tel: 212-686-5194 fax: 212-532-3525
Toll Free: 800-294-9495
www.henryglassfabrics.com

PET RESCUE

Finished Ped Bed Size: 32" dia., 4" thick

Pet Bed

Fabrics in the Collection



Chevron - Blue
8487-77



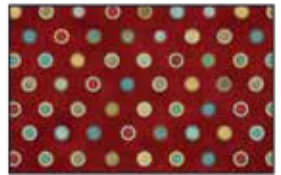
Chevron - Green
8487-66



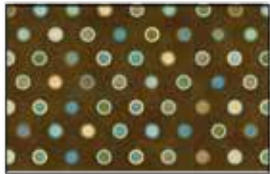
Plaid - Tan/Red
8486-48



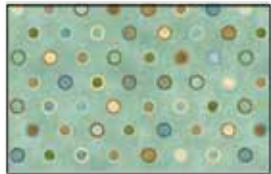
Plaid - Lt. Teal
8486-11



Dot - Red
8485-88



Dot - Brown
8485-38



Dot - Lt. Teal
8485-11



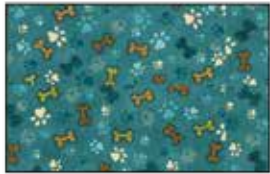
Hounds Tooth Mini - Red
8484-88



Hounds Tooth Mini - Teal
8484-77



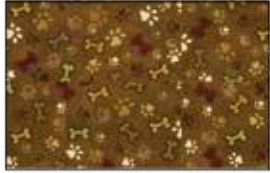
Hounds Tooth Mini - Brown
8484-38



Paws and Bones - Teal
8483-77



Paws and Bones - Cream
8483-44



Paws and Bones - Brown
8483-38



Tossed Dogs - Red
8482-88



Dog Blocks - Tan
8481-44



Tossed Dogs - Green
8482-66



Rescue Banner Panel - Light Teal
8480P-11

Select Fabrics from Starry Basics



Starry Basics - Red
8294-88



Starry Basics - Blue
8294-77



Starry Basics - Green
8294-66



Starry Basics - Brown
8294-38



Starry Basics - Lt. Blue
8294-17

Materials

1 ½ yards	Tossed Dogs - Red (A)	8482-88
¼ yard	Starry Basic - Brown (B)	8294-38
¼ yard	Hounds Tooth Mini - Brown (C)	8484-38
¼ yard	Plaid - Tan/Red (D)	8486-48
¼ yard	Paws and Bones - Cream (E)	8483-44
¼ yard	Chevron - Blue (F)	8487-11
¼ yard	Dot - Lt. Teal (G)	8485-11
¼ yard	Starry Basic - Lt. Blue (H)	8294-17
¼ yard	Paws and Bones - Teal (I)	8483-77

You will also need:

- Filber-fill for stuffing pet bed

Quilt Cutting Instructions

Please note: all strips are cut across the width of fabric (WOF) from selvage to selvage unless otherwise noted.

From the Tossed Dogs - Red (A), cut:

- (4) 4 ½” x WOF strips. Sub-cut strips into (36) 4 ½” squares.
- (1) 33” square.

From the Starry Basic - Brown (B), cut:

- (1) 5 ¼” x WOF strip. Sub-cut the strip into (4) 5 ¼” squares and (4) 4 ½” squares. Cut the 5 ¼” squares across both diagonals to make (16) triangles.

From the Hounds Tooth Mini - Brown (C), cut:

- (1) 5 ¼” x WOF strip. Sub-cut the strip into (4) 5 ¼” squares and (4) 4 ½” squares. Cut the 5 ¼” squares across both diagonals to make (16) triangles.

From the Plaid - Tan/Red (D), cut:

- (1) 5 ¼” x WOF strip. Sub-cut the strip into (4) 5 ¼” squares and (4) 4 ½” squares. Cut the 5 ¼” squares across both diagonals to make (16) triangles.

From the Paws and Bones - Cream (E), cut:

- (1) 5 ¼” x WOF strip. Sub-cut the strip into (4) 5 ¼” squares and (4) 4 ½” squares. Cut the 5 ¼” squares across both diagonals to make (16) triangles.

From the Chevron - Blue (F), cut:

- (1) 5 ¼” x WOF strip. Sub-cut the strip into (4) 5 ¼” squares and (4) 4 ½” squares. Cut the 5 ¼” squares across both diagonals to make (16) triangles.

From the Dot - Lt. Teal (G), cut:

- (1) 5 ¼” x WOF strip. Sub-cut the strip into (4) 5 ¼” squares and (4) 4 ½” squares. Cut the 5 ¼” squares across both diagonals to make (16) triangles.

From the Starry Basic - Lt. Blue (H), cut:

- (1) 5 ¼” x WOF strip. Sub-cut the strip into (4) 5 ¼” squares and (4) 4 ½” squares. Cut the 5 ¼” squares across both diagonals to make (16) triangles.

From the Paws and Bones - Teal (I), cut:

- (1) 5 ¼” x WOF strip. Sub-cut the strip into (4) 5 ¼” squares and (4) 4 ½” squares. Cut the 5 ¼” squares across both diagonals to make (16) triangles.

Sewing Instructions

1. Sew (1) Fabric B triangle, (1) Fabric C triangle, (1) Fabric D triangle and (1) Fabric E triangle together to make (1) BC block (Fig. 1). Repeat to make (16) BC blocks total.
2. Sew (1) Fabric F triangle, (1) Fabric G triangle, (1) Fabric H triangle and (1) Fabric I triangle together to make (1) GI block (Fig. 2). Repeat to make (16) GI blocks total.

make 16

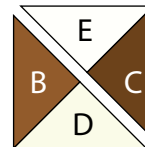


Fig. 1

make 16

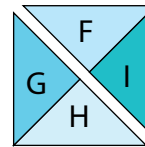


Fig. 2

Bed Assembly

3. Sew (4) BC blocks and (4) 4 ½” Fabric A squares together, alternating them, to make (1) BC row. Repeat to make (4) BC rows total.
4. Sew (4) 4 ½” Fabric A squares and (4) GI blocks together, alternating them, to make (1) GI row. Repeat to make (4) GI rows total.
5. Sew the (4) BC rows and (4) GI rows together, alternating them, to make the pieced top (Fig. 3).

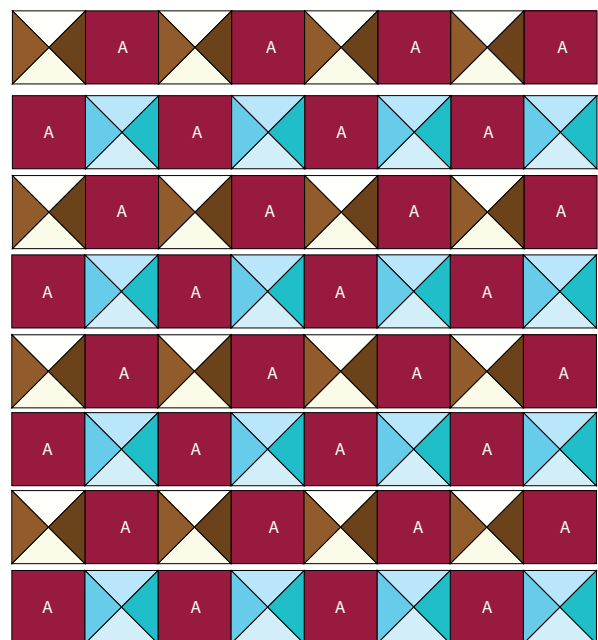


Fig. 3

6. Enlarge the arch template 400%.

7. Fold the pieced top into quarters. Align the arch template onto the folded square (Fig. 4). Draw a line following the arch. Cut through the (4) layers to make the circle to make the bed top (Fig. 5).

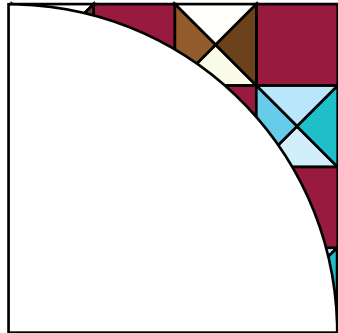


Fig. 4

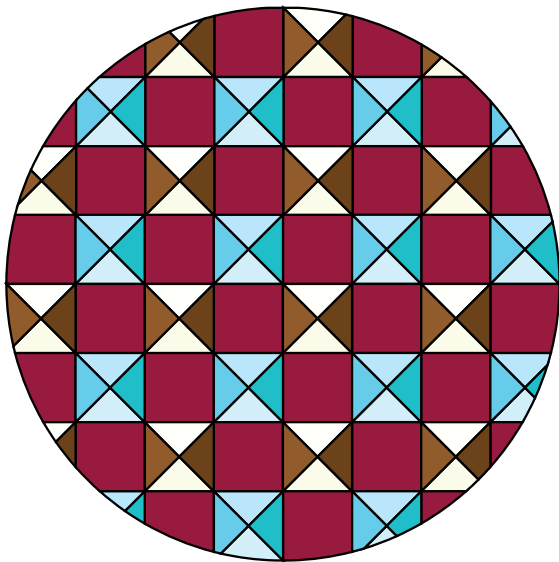


Fig. 5

8. Repeat with 33" Fabric A square to make the bed bottom.

9. Sew (26) assorted 4 1/2" squares together (there are extra squares for fabric choice) to make (1) strip (Fig. 6).



Fig. 6

10. Measure the circumference of the bed top. Trim the pieced strip to equal the circumference plus 1/2". Sew the two ends together to make a ring.

11. Pin the ring to the edge of the circle, right sides together, and sew the ring and top together.

12. Repeat with the bed bottom and the other edge of the ring. Leave an opening for turning.

13. Turn the bed right side out and stuff with fiber-fill.

14. Stitch the opening closed to complete the bed.

