

Kitty Kat Kapers

by Leanne Anderson



Finished Quilt Size: 61" x 71½"

49 West 37th Street, New York, NY 10018
tel: 212-686-5194 fax: 212-532-3525
Toll Free: 800-294-9495
www.henryglassfabrics.com

A Free Project Sheet From



Kitty Kat Kapers

Fabrics in the Collection



8033-77
Printed Panel



8034-33
Cream Cats



8034-88
Red Cats



8035-38
Brown Dots



8035-66
Green Dots



8035-88
Red Dots



8036-38
Brown Paw Prints



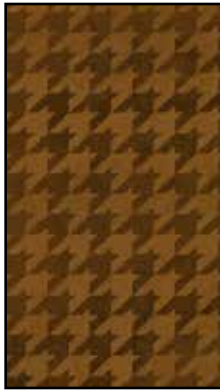
8036-66
Green Paw Prints



8036-77
Blue Paw Prints



8037-33
Gold Check



8037-38
Brown Check



8037-77
Blue Check



8038-33
Cream Words



8038-77
Blue Words



8039-33
Cream Tonal



8039-66
Green Tonal



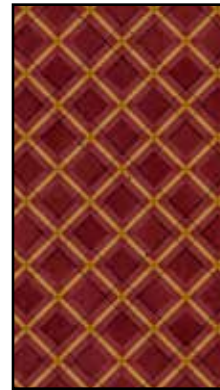
8039-77
Blue Tonal



8040-66
Green Plaid



8040-77
Blue Plaid



8040-88
Red Plaid

Materials

½ yard	Red Cats	8034-88
½ yard	Red Dots	8035-88
½ yard	Gold Check	8037-33
⅜ yard	Blue Check	8037-77
½ yard	Blue Words	8038-77
¾ yard	Cream Tonal	8039-33
1¼ yards	Green Tonal	8039-66
⅜ yard	Blue Tonal	8039-77
1⅝ yards	Blue Plaid	8040-77
	(for binding)	
¾ yard	Red Plaid	8040-88
4⅞ yards	Cream Cats	8034-33
	(for quilt backing)	



Cutting Instructions

Please note: all strips are cut across the width of the fabric from selvage edge to selvage edge.

From the red cats, cut:

- (1) 8" strip. Recut into (5) 8" x 8" squares.
- (1) 6" strip. Recut into (2) 6" x 8½" and (2) 6" x 8" pieces and (1) 6" x 6" square.

From the red dots, cut:

- (1) 6" strip. Recut into (2) 6" x 8½" and (2) 6" x 8" pieces and (1) 6" x 6" square.
- (2) 3" strips. Recut into (20) 3" x 3" squares.

From the gold check, cut:

- (5) 2½" strips for the inner border.

From the blue check, cut:

- (1) 6" strip. Recut into (2) 6" x 8½" and (2) 6" x 8" pieces and (1) 6" x 6" square.

From the blue words, cut:

- (1) 8" strip. Recut into (5) 8" x 8" squares.
- (1) 6" strip. Recut into (1) 6" x 8½" and (3) 6" x 8" pieces and (1) 6" x 6" square.

From the cream tonal, cut:

- (10) 2" strips. Recut into (20) 2" x 11" and (20) 2" x 8" pieces.

From the green tonal, cut:

- (7) 2½" strips for the outer border.
- (10) 2" strips. Recut into (20) 2" x 11" and (20) 2" x 8" pieces.

From the blue tonal, cut:

- (2) 4¼" strips. Recut into (10) 4¼" x 4¼" squares.

From the blue plaid, cut:

- (2) 6" strips. Recut into (1) 6" x 9" and (4) 6" x 8½" pieces.
- (2) 3" strips. Recut into (25) 3" x 3" squares.
- (7) 2¼" strips for the binding.

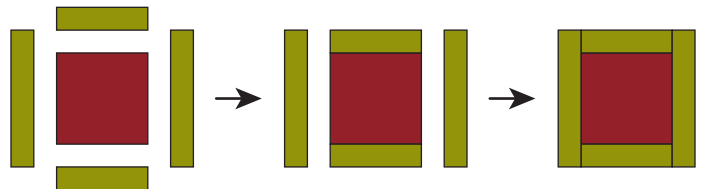
From the red plaid, cut:

- (2) 6" strips. Recut into (1) 6" x 9", (3) 6" x 8½", and (1) 6" x 8" pieces.
- (2) 4¼" strips. Recut into (10) 4¼" x 4¼" squares.

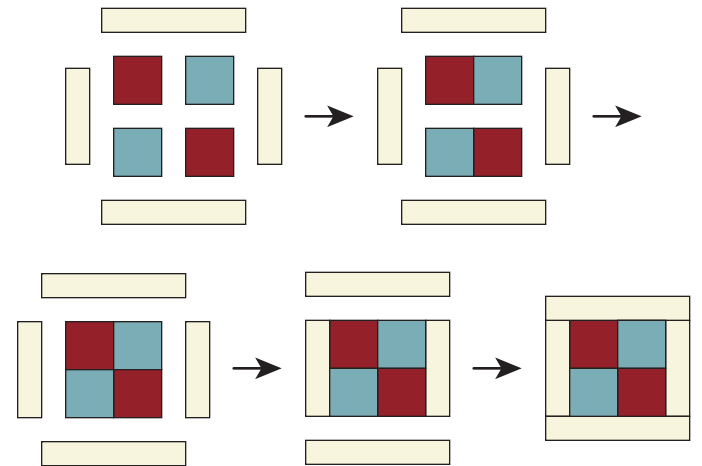
Sewing Instructions

All seams are sewn using 1/4" seam allowance with pieces held right sides together and raw edges even.

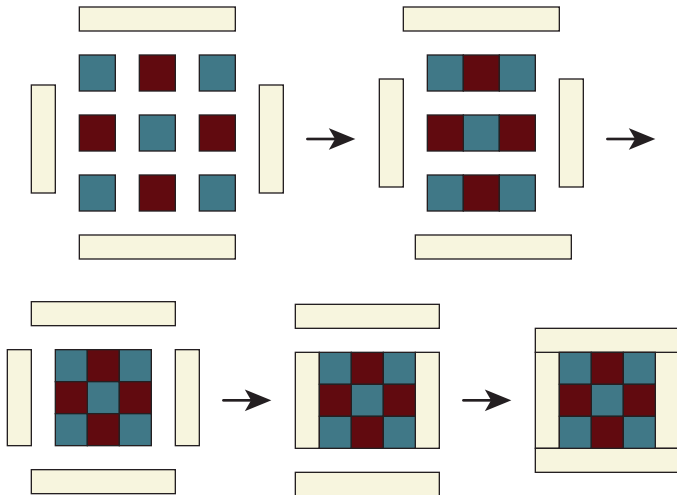
1. Stitch 2" x 8" green tonal pieces to the top and bottom of an 8" red cats square. Press the seams away from the square. Sew 2" x 11" green tonal pieces to the left and right sides of the square. Repeat to make a total of (5) red cats blocks and (5) blue words blocks.



2. Arrange (2) 4¼" red plaid and (2) 4¼" blue tonal squares into (2) rows with (2) squares in each row, alternating the two types of squares. Stitch the squares into rows. Sew the rows together to complete (1) four-patch block center. Stitch 2" x 8" cream tonal pieces to the left and right sides of the four-patch unit. Sew 2" x 11" cream tonal pieces to the top and bottom of the four-patch to complete (1) four-patch block. Repeat to make a total of (5) four-patch blocks.



3. Arrange (5) 3" blue plaid and (4) 3" red dots squares into (3) rows with (3) squares in each row, alternating the two types of squares. Stitch the squares into rows and sew the rows together to make (1) nine-patch block center. Stitch 2" x 8" cream tonal pieces to the left and right sides of the nine-patch unit. Sew 2" x 11" cream tonal pieces to the top and bottom of the nine-patch to complete (1) nine-patch block. Repeat to make a total of (5) nine-patch blocks.



Quilt Assembly & Finishing

4. Using the quilt pictured on the cover as a guide, arrange the (5) red cats blocks, (5) blue words blocks, (5) four-patch blocks, and (5) nine-patch blocks into (5) rows with (4) blocks in each row, alternating the various types of blocks as shown and noting orientation of the four-patch blocks. Stitch the blocks into rows. Sew the rows together to complete the center of the quilt top.

5. Trim the selvages from the (5) 2½" gold check, inner border, strips. Stitch the strips together, end to end, to make a long 2½" strip. From this long strip, cut (2) 53" and (2) 46½" lengths (*if your measurements are different, cut to fit your quilt top*). Stitch the longer lengths to the left and right sides of the quilt top. Sew the shorter lengths to the top and bottom.

6. Using the quilt pictured on the cover as a guide to fabric placement, stitch together, end to end, (3) 6" x 8½" assorted pieces. Repeat to make a second unit. Stitch these units to opposite short sides of a 6" x 9" blue plaid piece to make (1) long pieced border unit. Stitch this pieced border to the left side of the quilt top.

7. Again using the quilt pictured on the cover as a guide to fabric placement, stitch together, end to end, (3) 6" x 8½" assorted pieces. Repeat to make a second unit. Stitch these units to opposite short sides of a 6" x 9" red plaid piece to make (1) long pieced border unit. Stitch this pieced border to the right side of the quilt top.

8. Stitch 6" x 8" pieces to opposite short sides of a 6" x 8½" piece. Repeat to make a second unit. Stitch these units together, end to end. Sew 6" squares to both short ends of the pieced strip to make (1) short pieced border. Stitch this pieced border to the top of the quilt top. Repeat the procedure to make a second short pieced border. Sew the pieced border to the bottom of the quilt top.

9. Trim the selvages from the 2½" green tonal, outer border, strips. Stitch the strips together, end to end, to make a long 2½" strip. From this long strip, cut (2) 68" and (2) 61½" lengths (*if your measurements are different, cut to fit your quilt top*). Stitch the longer lengths to the left and right sides of the quilt top. Sew the shorter lengths to the top and bottom.

10. Layer the completed quilt top with batting and backing and quilt as desired.

11. Trim the batting and backing even with the outer edges of the quilt top. Bind the finished quilt using the 2¼" blue plaid strips.

