

DO YOU SEE WHAT I SEE

By Leanne Anderson



Book Panel

A Free Project Sheet From



Henry Glass & Co., Inc.



facebook

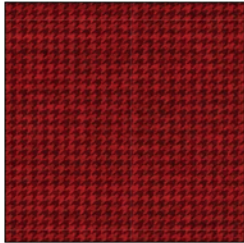
Finished Quilt Size: 49" x 61"
49 West 37th Street, New York, NY 10018
tel: 212-686-5194 fax: 212-532-3525
Toll Free: 800-294-9495
www.henryglassfabrics.com

DO YOU SEE WHAT I SEE

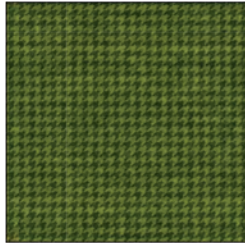
Finished Quilt Size: 49" x 61"

Book Panel

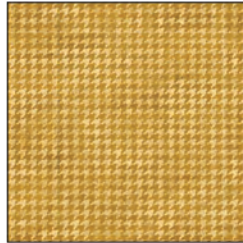
Fabrics in the Collection



Houndstooth - Red
8293-88



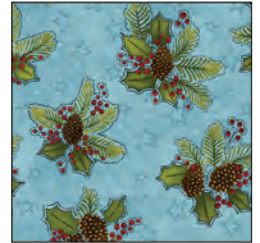
Houndstooth - Green
8293-66



Houndstooth - Gold
8293-33



Holly - Red
8292-88



Holly - Blue
8292-77



Holly - Cream
8292-44



Poinsettia - Red
8291-88



Poinsettia - Green
8291-66



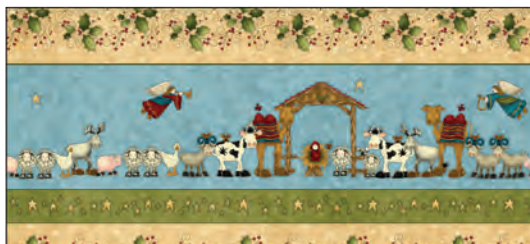
Poinsettia - Cream
8291-44



Character - Red
8290-88



Character - Green
8290-66



Border Stripe - Blue
8289-77



Starry - Red
8294-88



Starry - Green
8294-66



Starry - Tan
8294-44



Book Panel - Green
8288P-66



Advent Calendar Panel - Blue
8287P-77

DO YOU SEE WHAT I SEE

Page 1

Book Panel

Materials

1 panel	Book Panel – Green	8288P-66
7/8 yard	Holly – Blue	8292-77
1/4 yard	Poinsettia – Green	8291-66
1/4 yard	Holly – Red	8292-88
1/4 yard	Poinsettia – Cream	8291-44
1/4 yard	Character – Green	8290-66
1/4 yard	Holly – Cream	8292-44
1/3 yard	Houndstooth – Red	8293-88
1/2 yard	Houndstooth – Gold	8293-33
2 yards	Border Stripe – Blue	8289-77
3 1/4 yards	Poinsettia – Red	8291-88 (Backing)

Cutting Instructions

Please note: all strips are cut across the width of fabric (WOF) from selvage to selvage edge unless otherwise noted.

From the Book Panel - Green (A):

- Fussy cut (12) panel, each approximately 7 1/2" square and centered on a scene.

From the Holly - Blue (B), cut:

- (5) 2" x WOF strips. Sub-cut strips into (24) 2" x 7 1/2" strips.
- (6) 2" x WOF strips. Sub-cut strips into (24) 2" x 10 1/2" strips.
- (1) 3 1/2" x WOF strip. Sub-cut strip into (6) 3 1/2" squares.

From the Poinsettia - Green (C), cut:

- (2) 2" x WOF strips.

From the Holly - Red (D), cut:

- (4) 2" x WOF strips.

From the Poinsettia - Cream (E), cut:

- (2) 2" x WOF strips.

From the Character - Green (F), cut:

- (2) 2" x WOF strips.

From the Holly - Cream (G), cut:

- (2) 2" x WOF strips.

From the Houndstooth - Red (H), cut:

- (3) 2" x WOF strips. Sew the strips together, end to end with diagonal seams, and cut (2) 2" x 45 1/2" strips.
- (2) 2" x 36 1/2" strips.

From the Houndstooth - Gold (I), cut:

- (6) 2 1/2" x WOF strips for the binding.

From the Border Stripe - Blue (J):

- Fussy cut (2) 7" x 65" strips from the length of fabric (LOF).
- Fussy cut (2) 7" x 53" LOF strips.

From the Poinsettia - Red (Backing), cut:

- (2) 57" x WOF strips for the backing. Sew the strips together and trim to make the 57" x 69" back.

Sewing Instructions

1. Sew the following the 2" x WOF strips together, lengthwise, in the order listed: (1) Fabric C, (1) Fabric D, (1) Fabric E, (1) Fabric F, (1) Fabric D and (1) Fabric G to make (1) strip set. Repeat to make a second strip set. Sub-cut the strip sets into (17) 3 1/2" x 9 1/2" sashing units (Fig. 1).

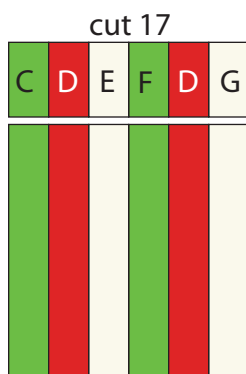


Fig. 1

2. Sew (1) 2" x 7 1/2" Fabric B strip to each side of (1) 7 1/2" Fabric A panel. Sew (1) 2" x 10 1/2" Fabric B strip to the top and to the bottom of the Fabric A panel. Trim the block to measure 9 1/2" square to make (1) Panel block (Fig. 2). Repeat to make (12) Panel blocks total.

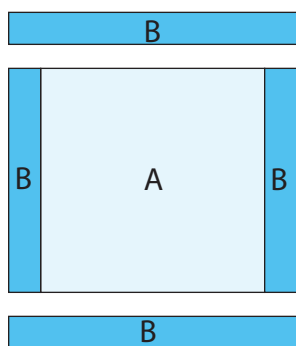


Fig. 2

make 12

Quilt Top Assembly

(Refer to the Quilt Photo while assembling.)

3. Sew (3) sashing units and (2) 3 1/2" Fabric B squares together, alternating them, to make (1) sashing strip. Repeat to make (3) sashing strips total.

4. Sew (3) Panel blocks and (2) sashing units together, alternating them, to make (1) block row. Repeat to make (4) block rows.

5. Sew the (4) rows and (3) sashing strips together, alternating them, to make the quilt top.

6. Sew (1) 2" x 45 1/2" Fabric H strip to each side of the quilt top. Sew (1) 2" x 36 1/2" Fabric H strip to the top and to the bottom of the quilt top.

7. Center (1) 7" x 65" Fabric J strip on one side of the quilt top and pin in place. Start sewing the strip a 1/4" from the top edge of the quilt top and stop a 1/4" from the bottom edge. **DO NOT TRIM THE EXCESS.** Repeat with the opposite side.

8. Repeat Step 7 to sew (1) 7" x 53" Fabric J strip to the top and to the bottom of the quilt top, making sure to stop and start 1/4" away from each end of the quilt top. To miter each corner, fold the quilt top on a diagonal, wrong side together. This should line up the strips from adjacent sides (Fig. 3).

9. Starting at the sewn seam (represented by the arrow in Figure 3), draw a 45-degree line to the edge of the fabric. Sew on the drawn line. Trim the excess fabric leaving a 1/4" seam. Repeat this step with the remaining corners.

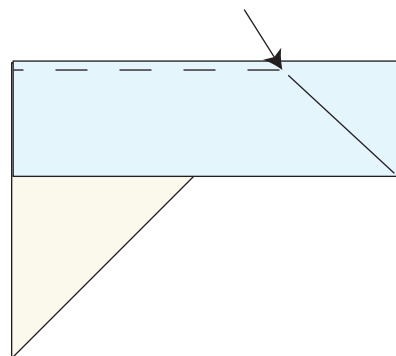


Fig. 3

10. Layer and quilt as desired.

11. Sew the (6) 2 1/2" x WOF Fabric I strips together, end to end with 45-degree seams, to make the binding. Fold this long strip in half lengthwise with wrong sides together and press.

12. Bind as desired.