

Build Each Other Up

by Leanne Anderson



Panel



A Free Project Sheet From



Henry Glass & Co., Inc.



facebook

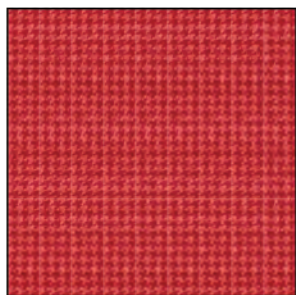
Finished Quilt Size: 54" x 59"
49 West 37th Street, New York, NY 10018
tel: 212-686-5194 fax: 212-532-3525
Toll Free: 800-294-9495
www.henryglassfabrics.com

BUILD EACH OTHER UP

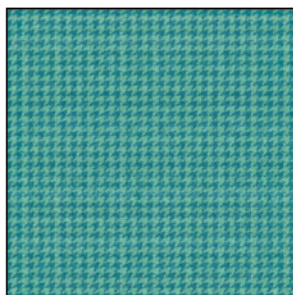
Finished Quilt Size: 54" x 59"

Panel

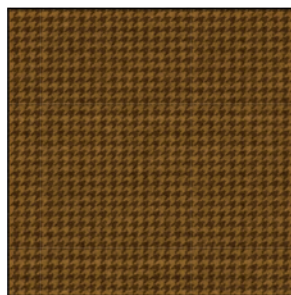
Fabrics in the Collection



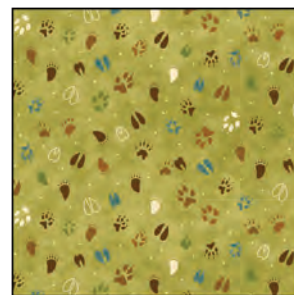
Houndstooth - Red
8358-88



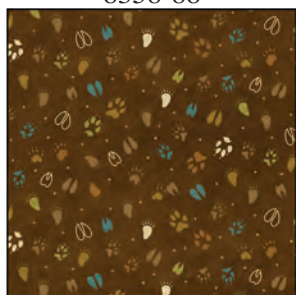
Houndstooth - Teal
8358-77



Houndstooth - Brown
8358-38



Paw Prints - Green
8357-66



Paw Prints - Brown
8357-38



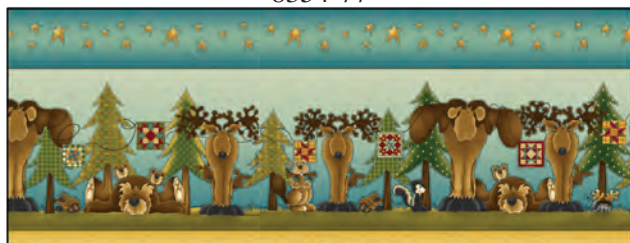
Characters - Red
8356-88



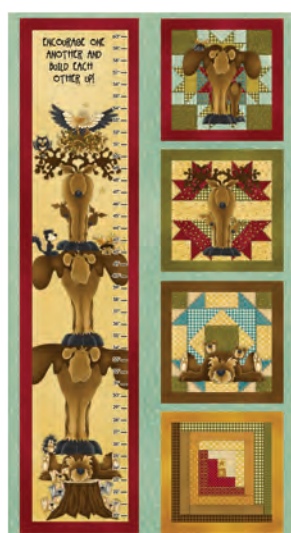
Characters - Teal
8356-77



Quilt Blocks - Teal
8354-77



Border Stripe - Teal
8355-77



Growth Chart Panel - Lt. Teal
8353P-77



Panel - Green
8352P-66

Select Fabrics From the Starry Basics Collection



Starry-Black
8294-99



Starry-Red
8294-88



Starry-Blue
8294-77



Starry-Green
8294-66



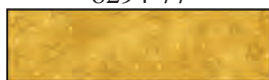
Starry-Tan
8294-44



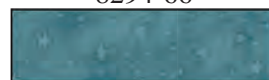
Starry-Brown
8294-38



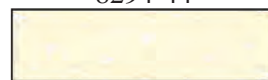
Starry-Pumpkin
8294-35



Starry-Gold
8294-33



Starry-Lt. Blue
8294-17



Starry-Cream
8294-04

Materials

1 panel	Panel - Green (A)	8352P-66
1 yard	Starry - Red (B)	8294-88*
1/2 yard	Quilt Blocks - Teal (C)	8354-77
1/4 yard	Starry - Green (D)	8294-66
5/8 yard	Paw Prints - Green (E)	8357-66
1/3 yard	Paw Prints - Brown (F)	8357-38
1/4 yard	Houndstooth - Teal (G)	8358-77
1/3 yard	Starry - Cream (H)	8294-04
1/4 yard	Starry - Blue (I)	8294-77
1/3 yard	Houndstooth - Brown (J)	8358-38
1 1/3 yards	Border Stripe - Teal (K)	8355-77
1/3 yard	Starry - Brown (L)	8294-38
3 1/2 yards	Characters - Red (Backing)	8356-88

*Includes binding

Quilt Cutting Instructions

Please note: all strips are cut across the width of fabric (WOF) from selvage to selvage edge unless otherwise noted.

From the Panel - Green (A):

- Fussy cut (1) large panel, approximately 22 1/2" x 24 1/2".
- Fussy cut (4) small panels, each approximately 7 1/2" square.

From the Starry - Red (B), cut:

- (2) 2 1/2" x 24 1/2" WOF strips.
- (2) 4" x 26 1/2" WOF strips.
- (6) 2 1/2" x WOF strips for the binding.

From the Quilt Blocks - Teal (C):

- Fussy cut (12) quilt blocks, each approximately 4 1/4" square.

From the Starry - Green (D), cut:

- (1) 1 1/2" x WOF strip. Sub-cut strip into (8) 1 1/2" x 4 1/4" strips.
- (2) 1 1/2" x WOF strips. Sub-cut strips into (8) 1 1/2" x 6 1/4" strips.

From the Paw Prints - Green (E), cut:

- (1) 4 1/4" x WOF strip. Sub-cut strip into (16) 1 1/2" x 4 1/4" strips.
- (1) 6 1/4" x WOF strip. Sub-cut strip into (16) 1 1/2" x 6 1/4" strips.
- (1) 3 3/8" x WOF strips. Sub-cut the strips into (12) 3 3/8" squares. Cut the squares across (1) diagonal to make (24) triangles.

From the Paw Prints - Brown (F), cut:

- (2) 3 3/8" x WOF strips. Sub-cut strips into (16) 3 3/8" squares. Cut the squares across (1) diagonal to make (32) triangles.

From the Houndstooth - Teal (G), cut:

- (1) 3 3/4" x WOF strip. Sub-cut strip into (8) 3 3/4" squares. Cut the squares across both diagonals to make (32) triangles.

From the Starry - Cream (H), cut:

- (2) 3 3/4" x WOF strips. Sub-cut strips into (14) 3 3/4" squares. Cut the squares across both diagonals to make (56) triangles.

From the Starry - Blue (I), cut:

- (1) 3 3/4" x WOF strip. Sub-cut strip into (6) 3 3/4" squares. Cut the squares across both diagonals to make (24) triangles.

From the Houndstooth - Brown (J), cut:

- (2) 2" x 40 1/2" WOF strips.
- (2) 2" x 38 1/2" WOF strips.

From the Border Stripe - Teal (K):

- Fussy cut (2) 8 1/2" x 43 1/2" strips from the length of fabric (LOF).
- Fussy cut (2) 8 1/2" x 38 1/2" LOF strips.

From the Starry - Brown (L), cut:

- (1) 9 1/2" x WOF strip. Sub-cut strip into (8) 1 1/2" x 9 1/2" strips and (8) 1 1/2" x 7 1/2" strips.

From the Characters - Red (Backing), cut:

- (2) 62" x WOF strips for the backing. Sew the strips together and trim to make the 62" x 67" back.

Sewing Instructions

1. Sew (1) $1\frac{1}{2}$ " x $7\frac{1}{2}$ " Fabric L strip to each side of (1) $7\frac{1}{2}$ " Fabric A square. Sew (1) $1\frac{1}{2}$ " x $9\frac{1}{2}$ " Fabric L strip to the top and to the bottom of the Fabric A square. Trim the block to measure $8\frac{1}{2}$ " square to make (1) large Corner block (Fig. 1). Repeat to make (4) Corner blocks total.

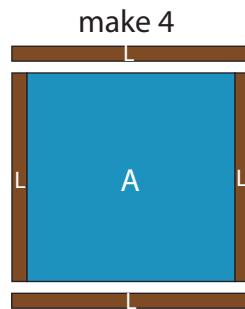


Fig. 1

2. Sew (1) $1\frac{1}{2}$ " x $4\frac{1}{4}$ " Fabric D strip to each side of (1) $4\frac{1}{4}$ " Fabric C square. Sew (1) $1\frac{1}{2}$ " x $6\frac{1}{4}$ " Fabric D strip to the top and to the bottom of the Fabric C square. Trim the block to measure $5\frac{1}{2}$ " square to make (1) Block One (Fig. 2). Repeat to make (4) Block Ones total.

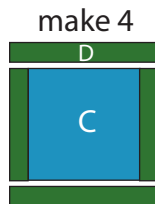


Fig. 2

3. Repeat Step 2 using (8) $4\frac{1}{4}$ " Fabric C squares and (16) $1\frac{1}{2}$ " x $4\frac{1}{4}$ " Fabric E strips and (16) $1\frac{1}{2}$ " x $6\frac{1}{4}$ " Fabric E strips to make (8) Block Twos (Fig. 3).

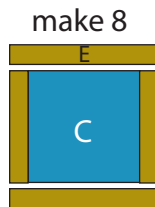


Fig. 3

4. Sew (4) Fabric G triangles, (4) Fabric H triangles and (4) Fabric F triangles together to make (1) Block Three (Fig. 4). Repeat to make (8) Block Threes total.

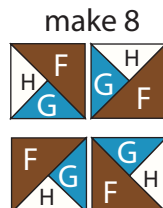


Fig. 4

5. Sew (4) Fabric E triangles, (4) Fabric H triangles and (4) Fabric I triangles together to make (1) Block Four (Fig. 5). Repeat to make (6) Block Fours total.

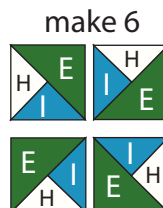


Fig. 5

6. Sew (1) $2\frac{1}{2}$ " x $24\frac{1}{2}$ " Fabric B strip to each side of the $22\frac{1}{2}$ " x $24\frac{1}{2}$ " Fabric A panel. Sew (1) 4 " x $26\frac{1}{2}$ " Fabric B strip to the top and to the bottom of the Fabric A panel. Trim the block to measure $25\frac{1}{2}$ " x $30\frac{1}{2}$ " to complete the Center block.

Quilt Top Assembly

(Refer to the Quilt Photo while assembling.)

7. Sew (2) Block Threes, (2) Block Twos and (2) Block Fours together to make (1) strip. Repeat to make a second strip. Sew (1) strip to each side of the Center block.

8. Sew (2) Block Ones, (2) Block Threes, (2) Block Twos and (1) Block Four together to make (1) strip. Repeat to make a second strip. Sew the strips to the top and to the bottom of the Center Block.

9. Sew (1) 2 " x $40\frac{1}{2}$ " Fabric J strip to each side of the Center block. Sew (1) 2 " x $38\frac{1}{2}$ " Fabric J strip to the top and to the bottom of the Center block to make the quilt top.

10. Sew (1) $(1) 8\frac{1}{2}$ " x $43\frac{1}{2}$ " Fabric K strip to each side of the quilt top. Sew (1) Corner block to each end of $(1) 8\frac{1}{2}$ " x $38\frac{1}{2}$ " Fabric K strip. Repeat to make a second strip. Sew the strips to the top and to the bottom of the quilt top.

11. Layer and quilt as desired.

12. Sew the $(6) 2\frac{1}{2}$ " x WOF Fabric B strips together, end to end with 45-degree seams, to make the binding. Fold this long strip in half lengthwise with wrong sides together and press.

13. Bind as desired.