

Build Each Other Up

by Leanne Anderson



Growth Chart



A Free Project Sheet From



Henry Glass & Co., Inc.



facebook

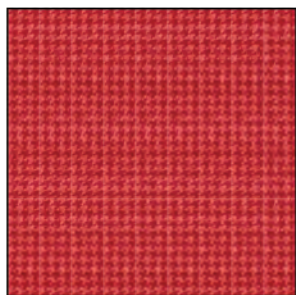
Finished Quilt Size: 20" x 61"
49 West 37th Street, New York, NY 10018
tel: 212-686-5194 fax: 212-532-3525
Toll Free: 800-294-9495
www.henryglassfabrics.com

BUILD EACH OTHER UP

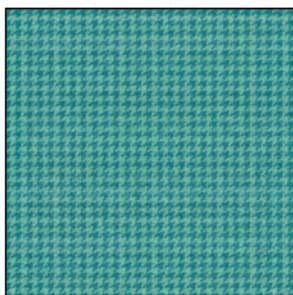
Finished Quilt Size: 20" x 61"

Growth Chart

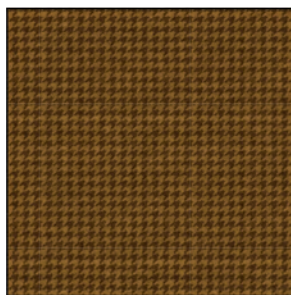
Fabrics in the Collection



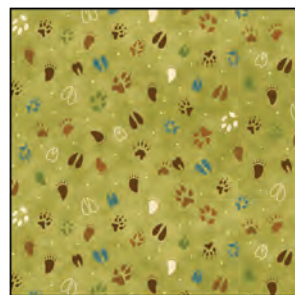
Houndstooth - Red
8358-88



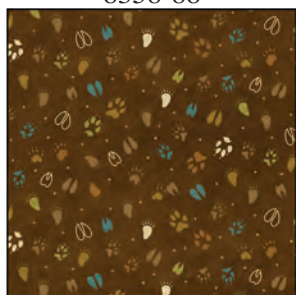
Houndstooth - Teal
8358-77



Houndstooth - Brown
8358-38



Paw Prints - Green
8357-66



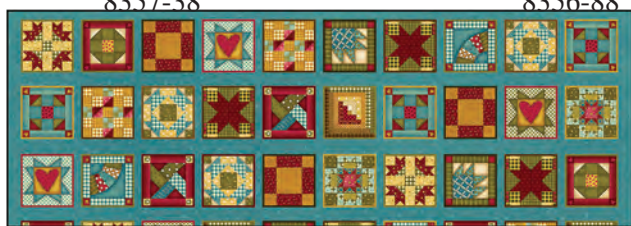
Paw Prints - Brown
8357-38



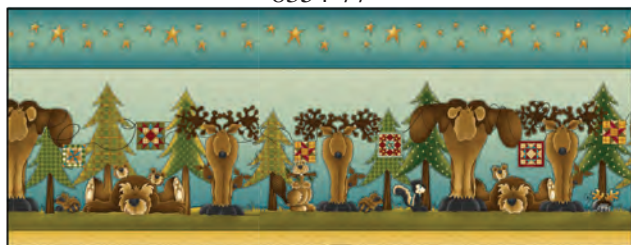
Characters - Red
8356-88



Characters - Teal
8356-77



Quilt Blocks - Teal
8354-77



Border Stripe - Teal
8355-77

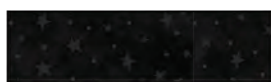


Growth Chart Panel - Lt. Teal
8353P-77



Panel - Green
8352P-66

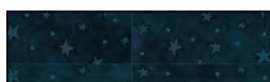
Select Fabrics From the Starry Basics Collection



Starry-Black
8294-99



Starry-Red
8294-88



Starry-Blue
8294-77



Starry-Green
8294-66



Starry-Tan
8294-44



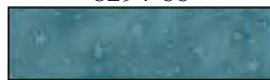
Starry-Brown
8294-38



Starry-Pumpkin
8294-35



Starry-Gold
8294-33



Starry-Lt. Blue
8294-17



Starry-Cream
8294-04

BUILD EACH OTHER UP

Growth Chart

Page 1

Materials

1 panel	Growth Chart Panel - Lt. Teal (A)	8353P-77
$\frac{3}{8}$ yard	Houndstooth - Teal (B)	8358-77
$\frac{1}{2}$ yard	Paw Prints - Brown (C)	8357-38
$\frac{3}{8}$ yard	Characters - Teal (D)	8356-77
$\frac{1}{4}$ yard	Starry - Cream (E)	8294-04
$\frac{1}{4}$ yard	Houndstooth - Red (F)	8358-88
$\frac{1}{4}$ yard	Starry - Tan (G)	8294-44
$\frac{1}{8}$ yard	Paw Prints - Green (H)	8357-66
$\frac{1}{2}$ yard	Starry - Brown (I)	8294-38*
2 yards	Quilt Blocks - Teal (Backing)	8354-77

*Includes binding

Quilt Cutting Instructions

Please note: all strips are cut across the width of fabric (WOF) from selvage to selvage edge unless otherwise noted.

From the Growth Chart Panel - Lt. Teal (A):

- Fussy cut (1) 10 $\frac{1}{2}$ " x 43 $\frac{1}{2}$ " growth chart.

From the Houndstooth - Teal (B), cut:

- (3) 1 $\frac{1}{2}$ " x WOF strips. Sew the strips together, end to end with diagonal seams, and cut (2) 1 $\frac{1}{2}$ " x 43 $\frac{1}{2}$ " strips and (2) 1 $\frac{1}{2}$ " x 12 $\frac{1}{2}$ " strips.
- (2) 2 $\frac{1}{2}$ " x WOF strips. Sub-cut strips into (20) 2 $\frac{1}{2}$ " squares.

From the Paw Prints - Brown (C), cut:

- (3) 3" x WOF strips. Sew the strips together, end to end with diagonal seams, and cut (2) 3" x 44 $\frac{1}{2}$ " strips and (2) 2 $\frac{1}{2}$ " x 16 $\frac{1}{2}$ " strips.

From the Characters - Teal (D), cut:

- (3) 2 $\frac{1}{2}$ " x WOF strips. Sew the strips together, end to end with diagonal seams, and cut (2) 2 $\frac{1}{2}$ " x 48 $\frac{1}{2}$ " strips.
- (1) 1 $\frac{1}{2}$ " x WOF strip. Sub-cut strip into (2) 1 $\frac{1}{2}$ " x 20 $\frac{1}{2}$ " strips.

From the Starry - Cream (E), cut:

- (2) 2 $\frac{1}{2}$ " x WOF strips. Sub-cut strips into (20) 2 $\frac{1}{2}$ " squares.

From the Houndstooth - Red (F), cut:

- (1) 4 $\frac{1}{2}$ " x WOF strip. Sub-cut strip into (10) 2 $\frac{1}{2}$ " x 4 $\frac{1}{2}$ " strips.

From the Starry - Tan (G), cut:

- (1) 4 $\frac{1}{2}$ " x WOF strip. Sub-cut strip into (10) 2 $\frac{1}{2}$ " x 4 $\frac{1}{2}$ " strips.

From the Paw Prints - Green (H), cut:

- (1) 2" x WOF strips. Sub-cut strips into (2) 2" x 20 $\frac{1}{2}$ " strips.

From the Starry - Brown (I), cut:

- (5) 2 $\frac{1}{2}$ " x WOF strips for the binding.

From the Quilt Blocks - Teal (Backing), cut:

- (1) 28" x 69" strip for the back.

Sewing Instructions

1. Place (1) 2 1/2" Fabric B square on the left side of (1) 2 1/2" x 4 1/2" Fabric G strip, right sides together (Fig. 1). Sew across the diagonal of the square from the upper right corner to the lower left corner (Fig. 1). Flip open the triangle formed and press (Fig. 2). Trim away the excess fabric from behind the triangle, leaving a 1/4" seam allowance.



Fig. 1



Fig. 2

2. Place another 2 1/2" Fabric B square on the right side of the 2 1/2" x 4 1/2" Fabric G strip, right sides together (Fig. 3). Sew across the diagonal of the square from the upper left corner to the lower right corner (Fig. 3). Flip open the triangle formed and press (Fig. 4). Trim away the excess fabric from behind the triangle, leaving a 1/4" seam allowance to make (1) BGB unit.

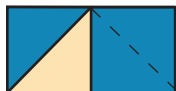


Fig. 3

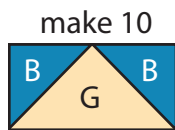


Fig. 4

3. Repeat Steps 1-2 to make (10) BGB units total.

4. Sew (5) BGB units together, end to end, to make (1) BGB strip (Fig. 5). Repeat to make a second strip.



Fig. 5

make 2

5. Repeat Steps 1-2 using (10) 2 1/2" x 4 1/2" Fabric F strips and (20) 2 1/2" Fabric E squares to make (10) EFE units (Fig. 6).

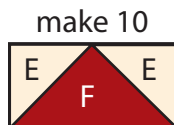


Fig. 6

6. Sew (5) EFE units together, end to end, to make (1) EFE strip. Repeat to make a second strip (Fig. 7).



Fig. 7

make 2

7. Sew (1) 1 1/2" x 43 1/2" Fabric B strip to each side of the 10 1/2" x 43 1/2" Fabric A strip. Sew (1) 1 1/2" x 12 1/2" Fabric B strip to the top and to the bottom of the Fabric A strip. Trim the block to measure 11 1/2" x 44 1/2" to make the Center block.

Quilt Top Assembly

(Refer to the Quilt Photo while assembling.)

8. Sew (1) 3" x 44 1/2" Fabric C strip to each side of the Center block. Sew (1) 2 1/2" x 16 1/2" Fabric C strip to the top and to the bottom of the Center block.

9. Sew (1) 2 1/2" x 48 1/2" Fabric D strip to each side of the Center block. Sew (1) 1 1/2" x 20 1/2" Fabric D strip to the top and to the bottom of the Center block.

10. Sew (1) EFE strip, (1) BGB strip and (1) 2" x 20 1/2" Fabric H strip together lengthwise to make (1) strip. Repeat to make a second strip. Sew the strips to the top and to the bottom of the Center block to make the Growth Chart top.

11. Layer and quilt as desired.

12. Sew the (5) 2 1/2" x WOF Fabric I strips together, end to end with 45-degree seams, to make the binding. Fold this long strip in half lengthwise with wrong sides together and press.

13. Bind as desired.