

- Low Density Residential
- Medium Density Residential
- Mixed Density/Residential High
- Mixed Commercial
- General Commercial
- Flex - Commercial
- Flex - Office
- Neighborhood Oriented Commercial

- Town Center
- Transit/Commercial Node
- Light Industrial
- Heavy Industrial
- Open Space and Parks
- Natural Open Space
- Community Facilities

- Railroads
- Lakes/Waterbodies
- Lindon City Boundary

Map 3 Future Land Use

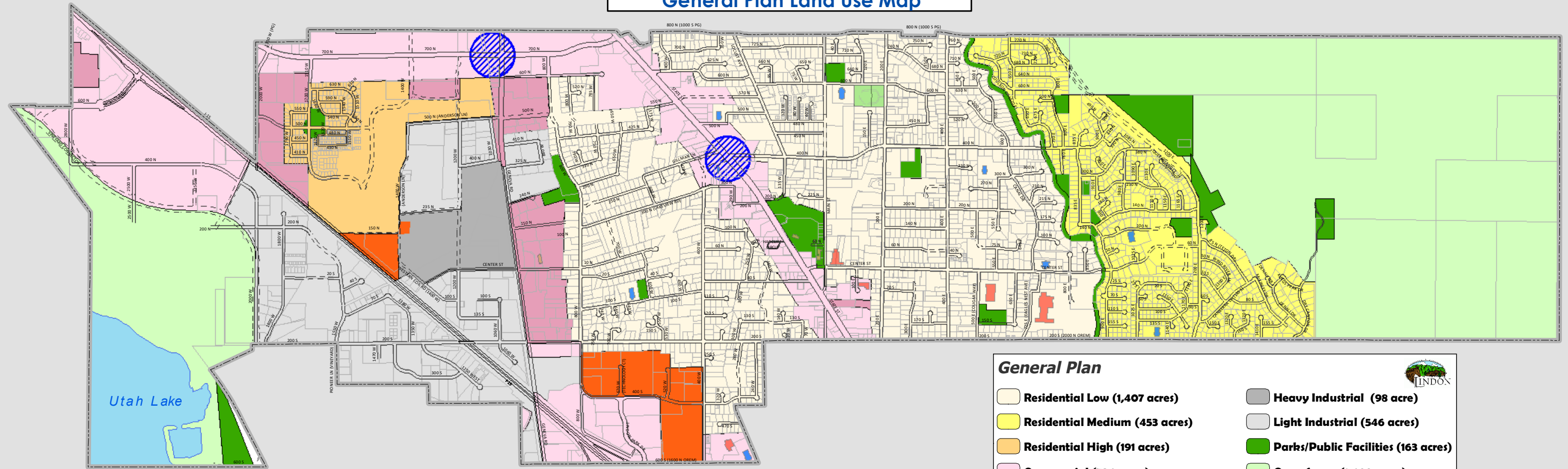
DRAFT | JANUARY 2023



Lindon City General Plan

Lindon City

General Plan Land Use Map



General Plan

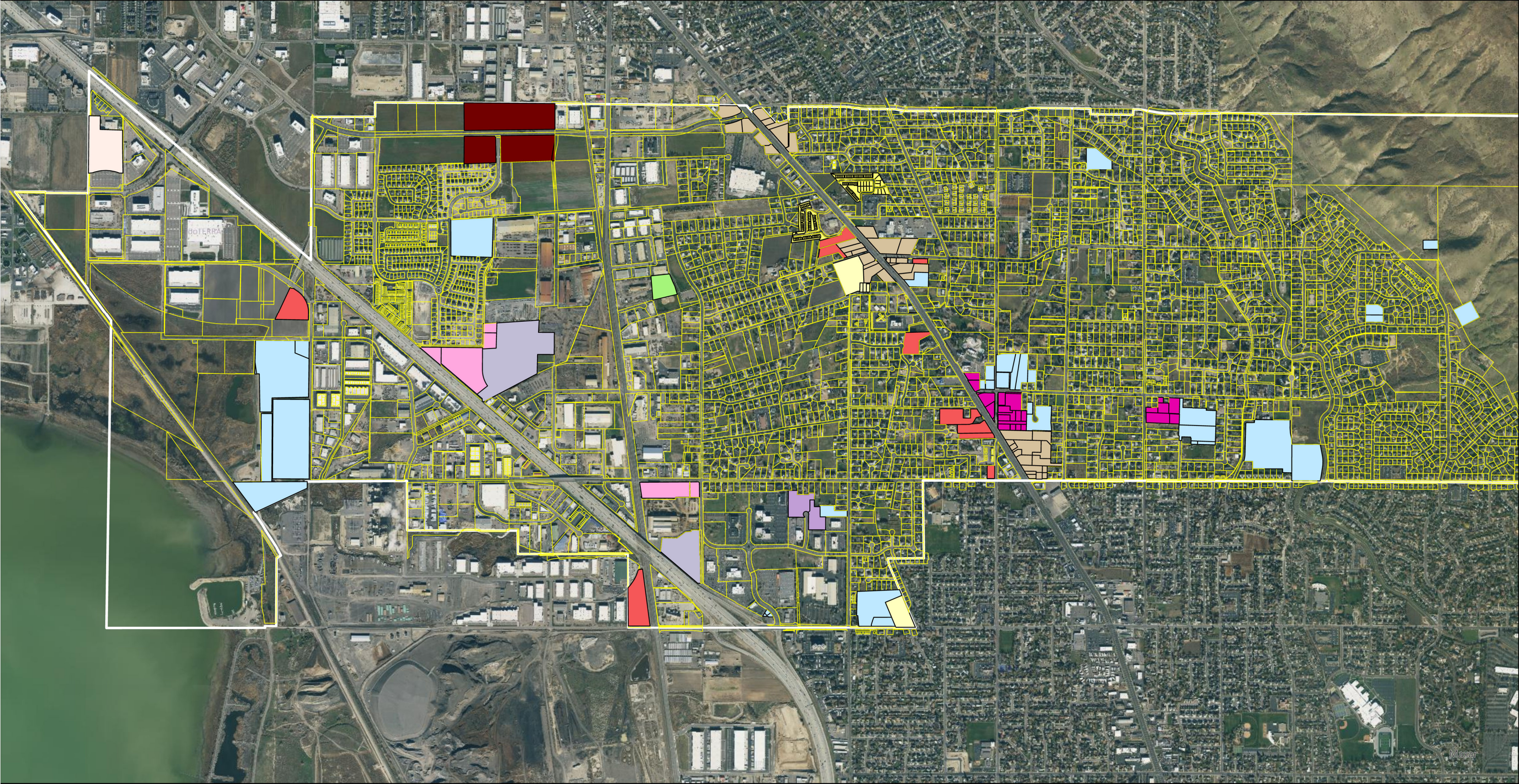
- | | |
|--------------------------------------|-------------------------------------|
| Residential Low (1,407 acres) | Heavy Industrial (98 acre) |
| Residential Medium (453 acres) | Light Industrial (546 acres) |
| Residential High (191 acres) | Parks/Public Facilities (163 acres) |
| Commercial (726 acres) | Open Space (1,608 acres) |
| Mixed Commercial (183 acres) | Transit Node (33 acres) |
| Research and Development (102 acres) | |




0 800 1,600 2,400 3,200 4,000 Feet



Printed: March 2018



- | | | |
|--|--|---|
|  Community Facilities |  Low Density Residential |  Town Center |
|  Flex - Commercial |  Medium Density Residential |  Transit/Commercial Node |
|  Flex - Office |  Mixed Commercial |  Open Space/Parks |
|  General Commercial |  Neighborhood Oriented Commercial |  No Change |
|  Light Industrial | | |

Parcels with Future Land Use Changes - Lindon General Plan 2023

