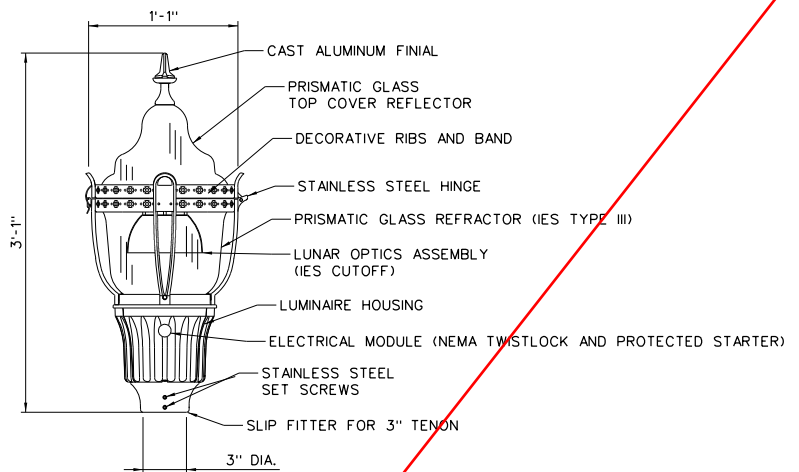


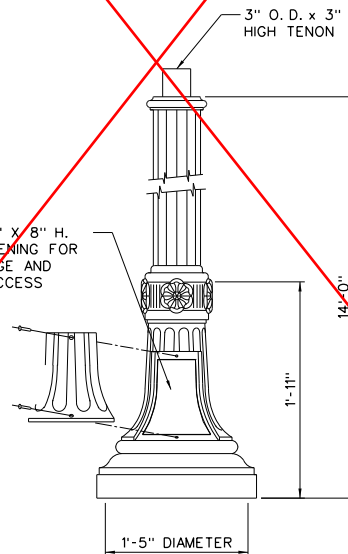
GRANVILLE DETAIL

HOLOPHANE CATALOG • NYA14F5J17P07LABBK
GVD404KASMB8RSBHPCL25



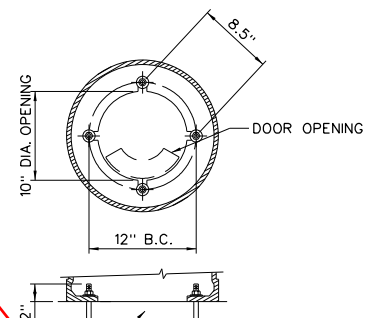
LUMINAIRE DETAIL

CATALOG • GVD404KASMB8RSBHPCL25



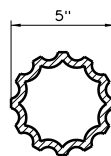
POST DETAIL

CATALOG • NYA14F5J17P07LABBK



SEE CONCRETE OR SCREW
FOUNDATION DETAILS ON
STANDARD DRAWING • 23d

ANCHORAGE DETAIL



**5" DIA. FLUTED SHAFT
CROSS SECTION**

Use "Lindon Residential"
detail from Holophane Dwg
TSG 008229 (attached)

APPROVED EQUAL PARTS MAY
BE SUBSTITUTED FOR THE
HOLOPHANE PRODUCTS SPECIFIED
ON THIS STANDARD DRAWING.



STATEMENT OF USE

THIS DOCUMENT AND ANY ILLUSTRATIONS HEREON ARE PROVIDED AS STANDARD CONSTRUCTION DETAILS WITHIN LINDON CITY. DEVIATION FROM THIS DOCUMENT REQUIRES APPROVAL OF LINDON CITY, LINDON CITY CORPORATION AND J-U-B ENGINEERS CAN NOT BE HELD LIABLE FOR MISUSE OR CHANGES REGARDING THIS DOCUMENT.

REVISION

NO.	DESCRIPTION	BY	APR.	DATE
1	ADJUST LUMINAIRE HEIGHT DIMENSION	M.C.	M.C.	10/08/10
2	ADJUST POST NOMINAL HEIGHT DIMENSION	E.E.A.	M.C.	11/07/14
3	UPDATE HOLOPHANE CATALOG NUMBERS	E.E.A.	M.C.	11/07/14

**GRANVILLE LED
STREET LIGHT**

LINDON CITY
100 NORTH STATE

STANDARD
DRAWING
NUMBER: **23c**
CAD DWG: LC_StdDwgs.dwg
PLOT SCALE: 1:1000
DRAWN BY: TRG
DESIGN BY: MLC
CHECKED BY: MLC
ADOPTED DATE: 07 APR 15

Specifications

POST DESCRIPTION

The lighting post shall be all aluminum construction, with a classic tapered and fluted base, and a 5"Ø fluted shaft with a tenon for luminaire mounting.

MATERIALS

The base shall be heavy-wall cast aluminum (356. 1ingot alloy) formed true to pattern with complete detail. The shaft material shall be fluted aluminum extrusion(6061-T6). All hardware shall be tamper resistant, stainless steel. Anchor bolts shall be hot-dip galvanized steel.

DIMENSIONS

The post height shall be 14'-0", with a 17"Ø base. The fluted shaft shall be 5"Ø with a 3"Ø x 3" tall tenon.

INSTALLATION

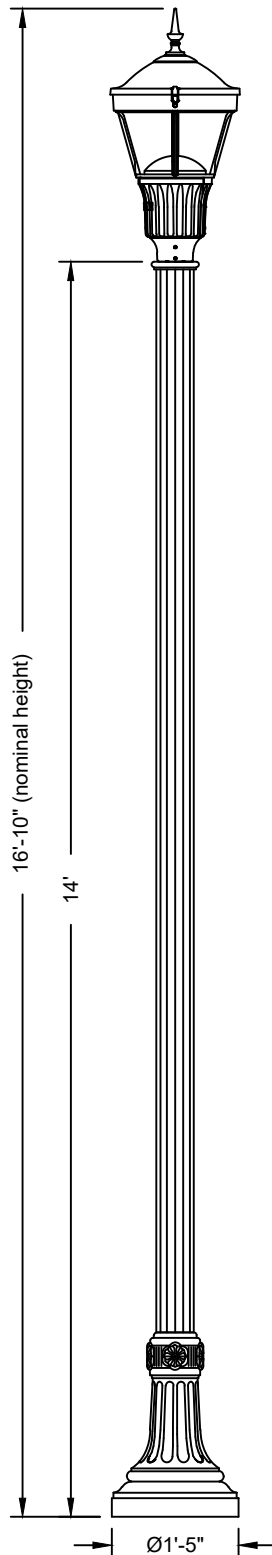
The post shall use 4 L-type, anchor bolts to be installed on a 10" - 12"Ø bolt circle. A door shall be located in the base for anchorage and wiring access. A grounding screw shall be provided inside the base, opposite the door, for easy access.

FINISH

The post assembly shall be shipped with a Holophane black finish.

LUMINAIRE DESCRIPTION

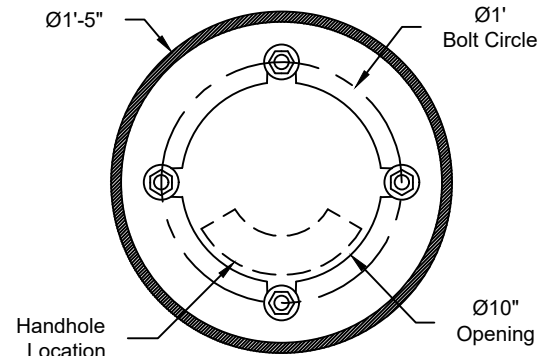
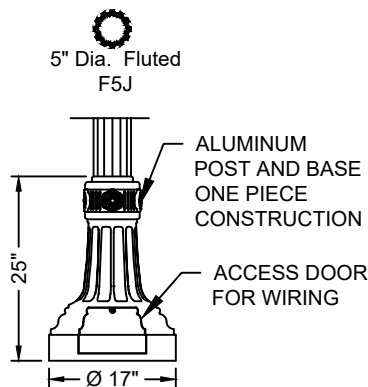
- Holophane Utility Post Top Full Cut off Series
- 45 watts with a minimum of 4598 lumens
- 7 pin twistlock receptacle with 25 year rated photocell
- 10 year Luminaire warranty
- Factory wired luminaire with 25' of pre-wired leads
- Tool less free driver tray assembly for ease of maintenance



Holophane

PUCL2 Lantern

Taft LED Post-Top Full
Cutoff Lantern



DO NOT USE TO SET ANCHOR BOLTS
CONTACT CUSTOMER SERVICE FOR TEMPLATE

Catalog #'s:

PUCL2 P20 40K AS BK P7 PCLL L24

Customer Signature

Date



Lindon Residential

ORDER #: 2172-11-10216-6

TYPE: **TAFT**

DRAWING #:

REVISION:

REVISION DATE:

TSG 008229

DRAWN: KRW

ORIGIN DATE: 4/15/14

PAGE: 3

THIS DRAWING, WHEN APPROVED, SHALL BECOME THE COMPLETE SPECIFICATION FOR THE MATERIAL TO BE FURNISHED BY HOLOPHANE ON THE ORDER NOTED ABOVE. A UNIT OF SIMILAR DESIGN MAY BE SUPPLIED, BUT ONLY AFTER APPROVAL BY THE CUSTOMER IN WRITING. ON POLE ORDERS AN ANCHOR BOLT TEMPLATE PRINT WILL BE SUPPLIED WITH EACH ANCHOR BOLT ORDER TO MATCH THE POLE PROVIDED. THIS PRINT IS THE PROPERTY OF HOLOPHANE AND IS LOANED SUBJECT TO RETURN UPON DEMAND AND UPON EXPRESS CONDITION THAT IT WILL NOT BE USED DIRECTLY OR INDIRECTLY IN ANY WAY DETRIMENTAL TO OUR INTERESTS, AND ONLY IN CONNECTION WITH MATERIAL FURNISHED BY HOLOPHANE.