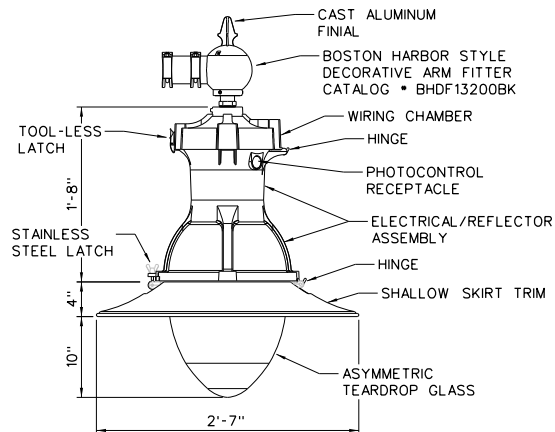


## ESPLANADE DETAIL

HOLOPHANE CATALOG • SMA16F5J13PT1LABBK  
VGC72/1CABKH - BHDF13200BK  
ESL1104KASSB4SSPCSR



## LUMINAIRE DETAIL

CATALOG • ESL1104KASSB4SSPCSR

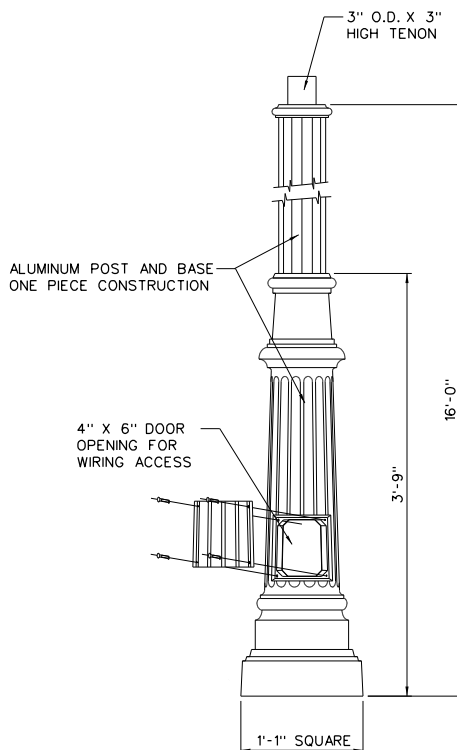
### REVISED CATALOG NUMBERS:

Pole: SMA16F5J13PTBK

Roadway Arm: VGC72/1CABKH

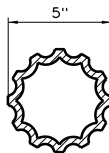
Level Fitter: BHDF13200BK

Fixture: ESL2 P30S 40K MV BK SG5 QSM PR7  
PCLL SS L35

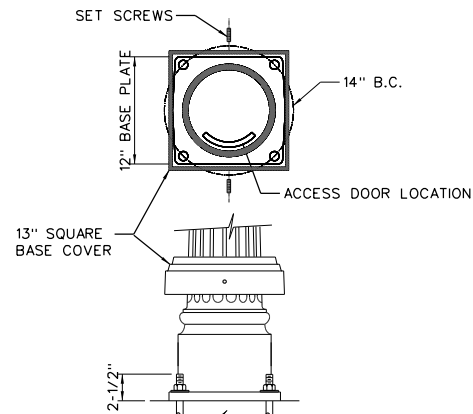


## POST DETAIL

CATALOG • SMA16F5J13PT1LABBK



## 5" DIA. FLUTED SHAFT CROSS SECTION



## ANCHORAGE DETAIL

SEE CONCRETE OR SCREW  
FOUNDATION DETAILS ON  
STANDARD DRAWING •23d

APPROVED EQUAL PARTS MAY  
BE SUBSTITUTED FOR THE  
HOLOPHANE PRODUCTS SPECIFIED  
ON THIS STANDARD DRAWING.



### STATEMENT OF USE

THIS DOCUMENT AND ANY ILLUSTRATIONS HEREON ARE PROVIDED AS STANDARD CONSTRUCTION DETAILS WITHIN LINDON CITY. DEVIATION FROM THIS DOCUMENT REQUIRES APPROVAL OF LINDON CITY CORPORATION AND J-U-B ENGINEERS CAN NOT BE HELD LIABLE FOR MISUSE OR CHANGES REGARDING THIS DOCUMENT.

### REVISION

NO.	DESCRIPTION	BY	APR	DATE
1	CORRECTED NOTE	SAC	M.C.	08/28/08
2	UPDATE HOLOPHANE CATALOG NUMBERS	EEA	M.C.	11/07/12



## ESPLANADE LED STREET LIGHT

LINDON CITY  
100 NORTH STATE

STANDARD  
DRAWING  
NUMBER: **23b**

CAD DWG: LC\_StdDwg.dgn  
PLOT SCALE: 1.000  
DRAWN BY: CJC  
DESIGN BY: MLC  
CHECKED BY: MLC  
ADOPTED DATE: 07 APR 15