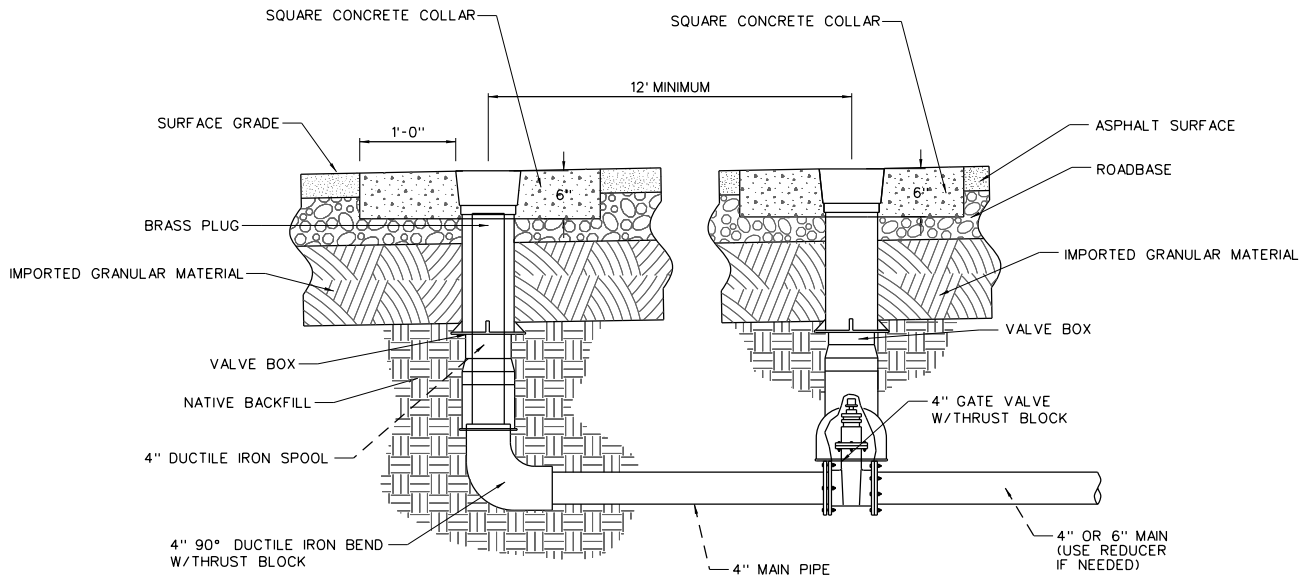


NOTE:
8' LENGTH OF 2 1/2" FIRE HOSE TO BE FURNISHED WITH EACH AIR INLET & REMOVAL FACILITY - FOR CURB & GUTTER INCLUDE A 2 1/2" MALE END ADAPTER & A 2 1/2" FEMALE END ADAPTER WITH AN AKRON SWIVEL ELBOW #232 - 45 DEGREES AT THE FEMALE END. HOSE & FITTING TO BE RATED FOR 120 PSI WORKING PRESSURE.

STANDARD SECTION WHERE NO STREET IMPROVEMENTS EXIST



NOTE:
PLACE VALVE BETWEEN THE AIR INLET AND REMOVAL FACILITY AND THE LAST SERVICE ON THE LINE, JUST BEYOND THE SERVICE

STANDARD SECTION WHERE STREET IMPROVEMENTS EXIST



STATEMENT OF USE

THIS DOCUMENT AND ANY ILLUSTRATIONS HEREON ARE PROVIDED AS STANDARD CONSTRUCTION DETAILS WITHIN LINDON CITY. DEVIATION FROM THIS DOCUMENT REQUIRES APPROVAL OF LINDON CITY CORPORATION AND J-U-B ENGINEERS CAN NOT BE HELD LIABLE FOR MISUSE OR CHANGES REGARDING THIS DOCUMENT.

REVISION

NO.	DESCRIPTION	BY	DATE
1	MODIFY STANDARD SECTION WHERE STREET IMPROVEMENTS EXIST	CJC	MLC 10/1/2015
2	ADD VALVE BOX TO THE AIR INLET	CJC	MLC 10/1/2015
3	INSERTED BRASS PLUG ANNOTATION	TRC	MLC 10/1/2015
4	REVISED CALLOUTS- ADDED DIMENSION IN LOWER DETAIL	EEA	MLC 10/1/2015



FLUSHING, AIR INLET & REMOVAL FACILITY FOR PRESSURE IRRIGATION

LINDON CITY
100 NORTH STATE

STANDARD DRAWING NUMBER:	21
CAD DWG: LC_StdDraws.dwg	
PLOT SCALE:	1,000
DRAWN BY:	CJC
DESIGN BY:	MLC
CHECKED BY:	MLC
ADOPTED DATE:	07 APR 15