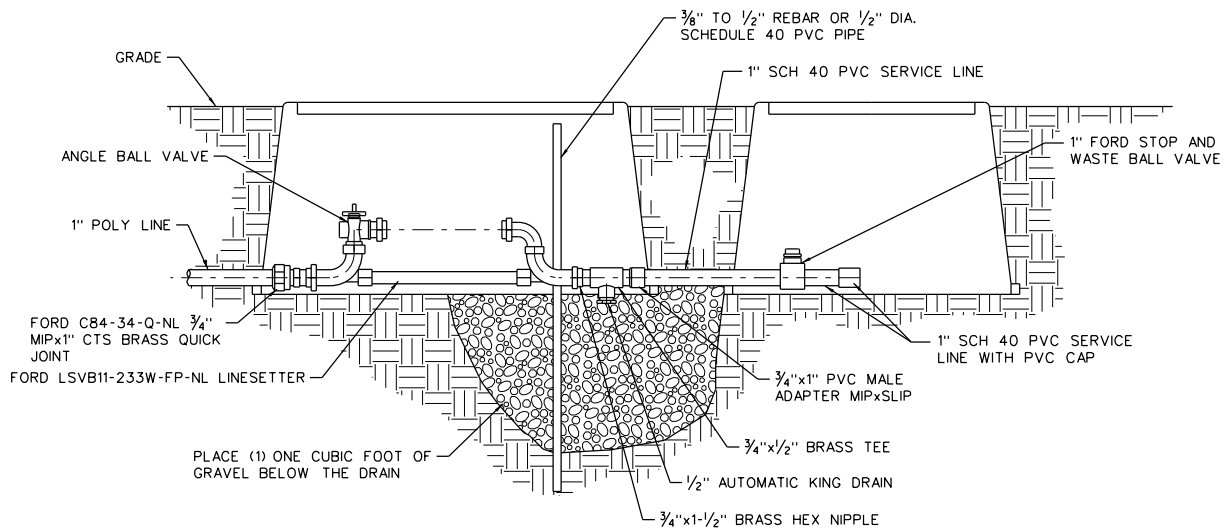


PLAN VIEW  
N.T.S.



ELEVATION SECTION  
N.T.S.

NOTES:

1. WATER METERS ARE TO BE INSTALLED BY CITY.
2. USE JUMPER (BRASS NIPPLE WITH GASKETS) IN PLACE OF METER WHERE METERS ARE NOT REQUIRED.
3. LINES ARE PRIVATE FROM THE LINESSETTER ON THE HOMEOWNER SIDE.
4. LINDON CITY RECOMMENDS A FILTER ON THE SPRINKLING SYSTEM.
5. CONTACT LINDON CITY PUBLIC WORKS FOR MORE INFORMATION IN CASE OF SERVICE LINES LARGER THAN 1" IN DIAMETER.



STATEMENT OF USE

THIS DOCUMENT AND ANY ILLUSTRATIONS HEREON ARE PROVIDED AS STANDARD CONSTRUCTION DETAILS WITHIN LINDON CITY. DEVIATION FROM THIS DOCUMENT REQUIRES APPROVAL OF LINDON CITY, LINDON CITY CORPORATION AND J-U-B ENGINEERS CAN NOT BE HELD LIABLE FOR MISUSE OR CHANGES REGARDING THIS DOCUMENT.

REVISION

1	NEW DETAIL ON THIS SHEET	EEA JMC 6/26/17
2	REMOVE WATER METER	JMM JMC 7/02/18
NO.	DESCRIPTION	BY APR DATE



METER AND LINESSETTER DETAIL  
FOR PRESSURE IRRIGATION

LINDON CITY  
100 NORTH STATE

STANDARD DRAWING NUMBER: **19a**  
 CAD DWG: LC\_StdDwg.dgn  
 PLOT SCALE: 1:000  
 DRAWN BY: EEA  
 DESIGN BY: JMC  
 CHECKED BY: MLC  
 ADOPTED DATE: 01/02/18