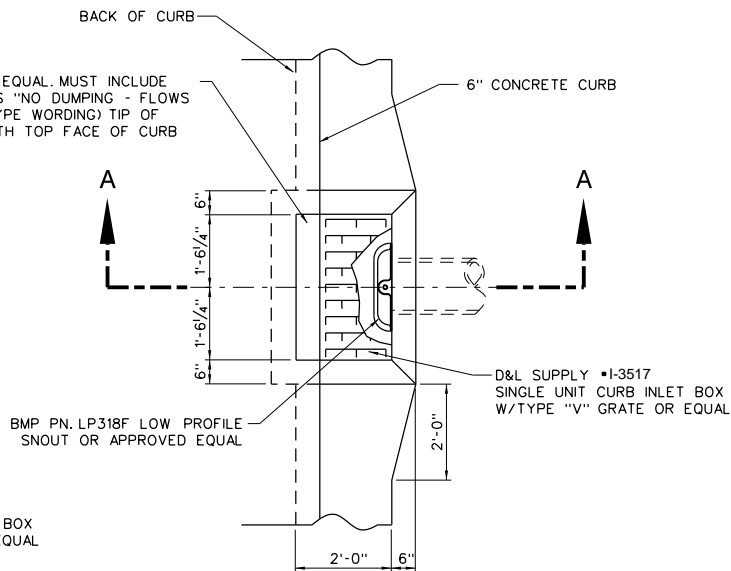
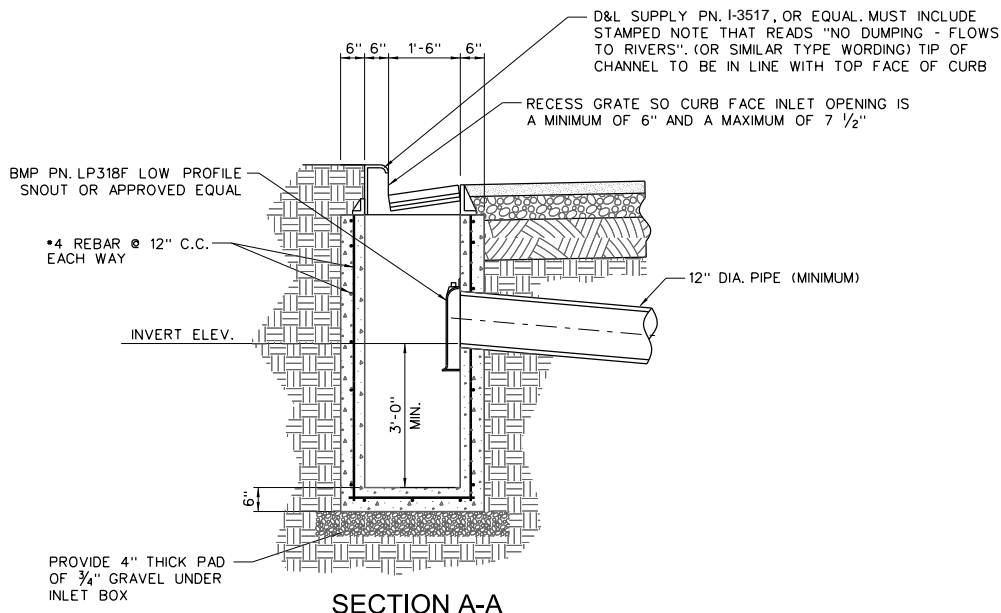


MULTIPLE INLET PLAN VIEW



SINGLE INLET PLAN VIEW



SECTION A-A

- NOTE:
1. CONCRETE BOXES AND MANHOLES MUST BE WATERTIGHT UP TO THE STATIC WATER LEVEL IN ORDER TO PREVENT THE WATER LEVEL FROM DROPPING AND ALLOWING POLLUTANTS FROM ESCAPING.
  2. THE SNOOT SHOWN IS DESIGNED TO ACCOMMODATE PIPE SIZES 12" AND 15". FOR LARGER PIPE SIZES CONTACT CITY ENGINEER.



STATEMENT OF USE

THIS DOCUMENT AND ANY ILLUSTRATIONS HEREON ARE PROVIDED AS STANDARD CONSTRUCTION DETAILS WITHIN LINDON CITY. DEVIATION FROM THIS DOCUMENT REQUIRES APPROVAL OF LINDON CITY. LINDON CITY CORPORATION AND J-U-B ENGINEERS CAN NOT BE HELD LIABLE FOR MISUSE OR CHANGES REGARDING THIS DOCUMENT.

REVISION

NO.	DESCRIPTION	BY	APR.	DATE



STORM WATER TREATMENT SYSTEM  
WITH SNOOT

LINDON CITY  
100 NORTH STATE

STANDARD DRAWING NUMBER:	7b
CAD DWG: LC_StdDwg.dgn	
PLOT SCALE:	1:1000
DRAWN BY:	EEA
DESIGN BY:	MLC
CHECKED BY:	MLC
ADOPTED DATE:	07 APR 15