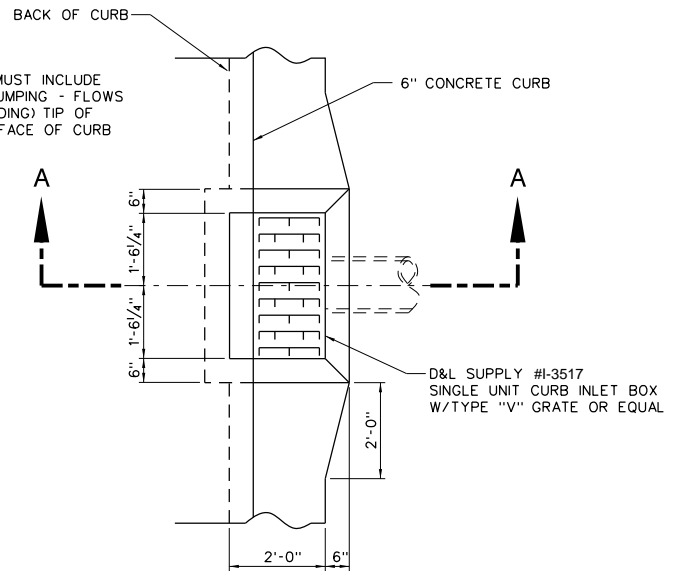
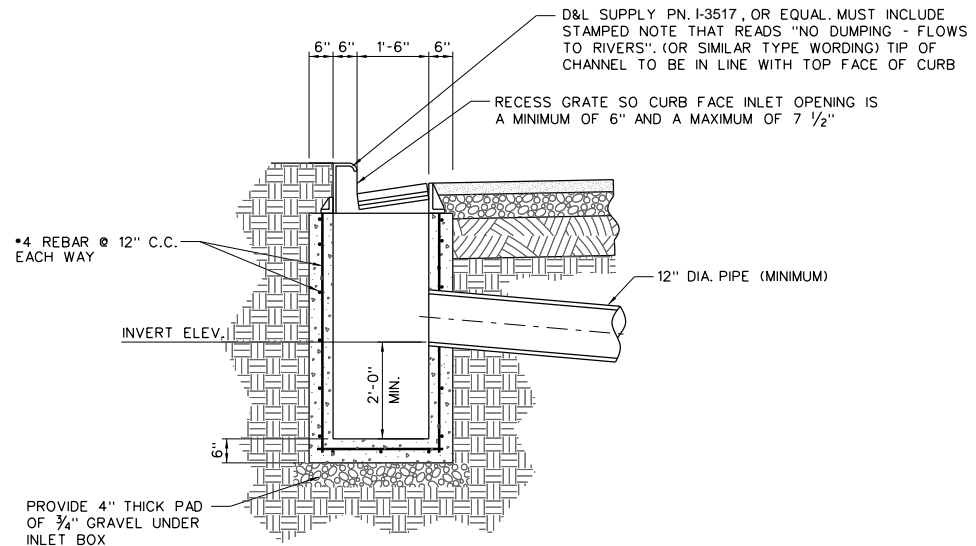


MULTIPLE INLET PLAN VIEW



SINGLE INLET PLAN VIEW



SECTION A-A

NOTE:

1. CONCRETE BOXES AND MANHOLES MUST BE WATERTIGHT UP TO THE STATIC WATER LEVEL IN ORDER TO PREVENT THE WATER LEVEL FROM DROPPING AND ALLOWING POLLUTANTS FROM ESCAPING.



STATEMENT OF USE

THIS DOCUMENT AND ANY ILLUSTRATIONS HEREON ARE PROVIDED AS STANDARD CONSTRUCTION DETAILS WITHIN LINDON CITY. DEVIATION FROM THIS DOCUMENT REQUIRES APPROVAL OF LINDON CITY CORPORATION AND J-U-B ENGINEERS CAN NOT BE HELD LIABLE FOR MISUSE OR CHANGES REGARDING THIS DOCUMENT.

REVISION

NO.	DESCRIPTION	BY	APR	DATE
1	REVISED OF I MODD NOTE TO INCLUDE SWMP STAMPED "NO DUMPING" NOTE TO CALL OUT	EEA	M.C.	4/7/15
2	UPDATED CURB FACE INLET OPENING	TRG	M.C.	1/29/20
3	SPELLING REVISION	BTB	M.C.	12/06/11
4	NOTE ADDITION AND SIZE CHANGE TO BOX FROM 6" TO 2'	MEP	M.C.	



CURB FACE INLET DETAIL

LINDON CITY  
100 NORTH STATE

STANDARD DRAWING NUMBER:	7a
CAD DWG: LC_StdDwg.dgn	
PLOT SCALE:	1:000
DRAWN BY:	BKW
DESIGN BY:	DCJ
CHECKED BY:	MJ
ADOPTED DATE:	07 APR 15