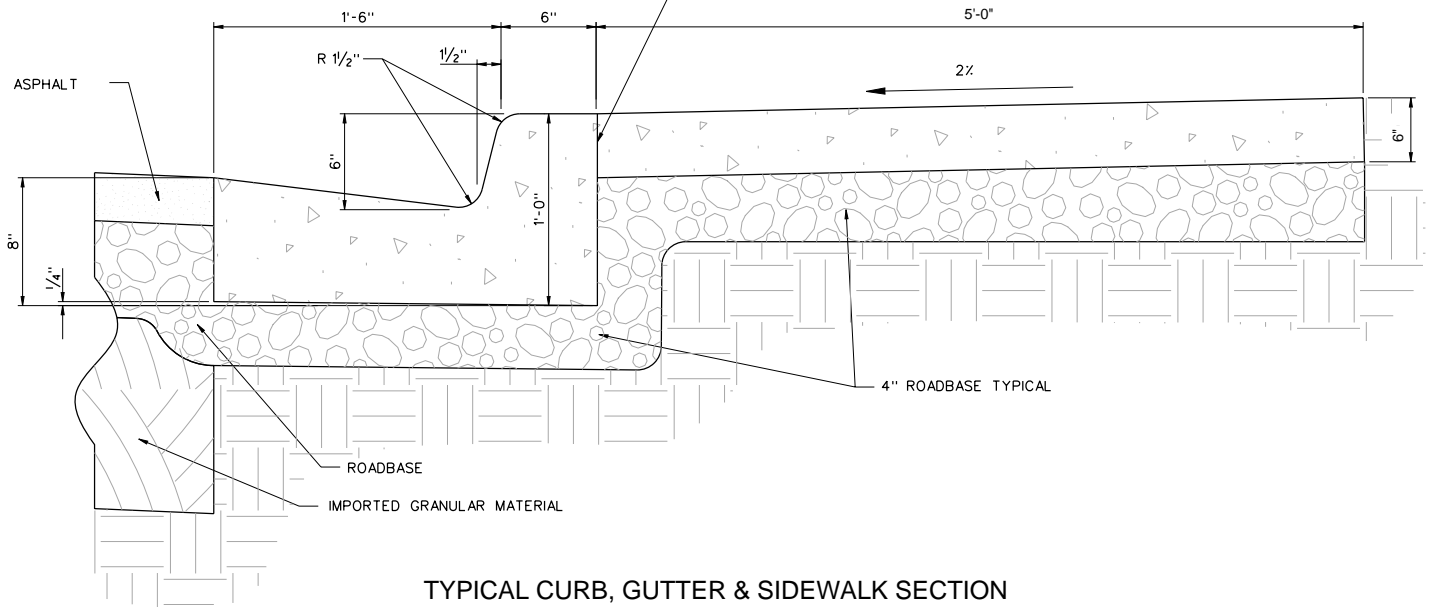
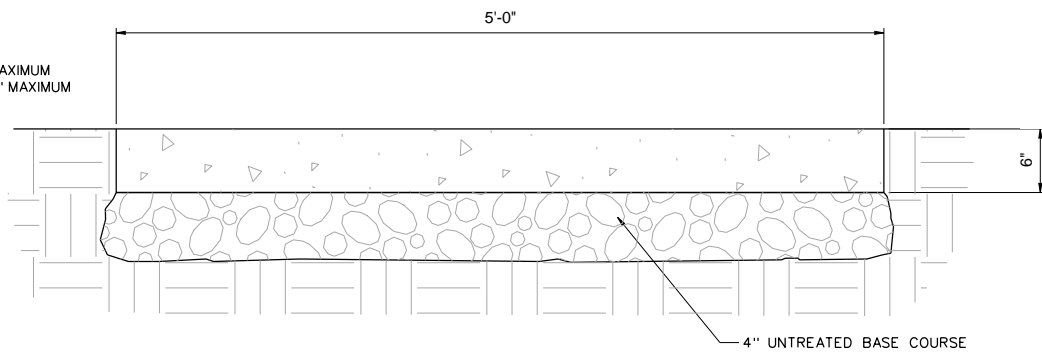


- CURB & GUTTER MAY BE PLACED INDEPENDENT OF SIDEWALK. SEAL JOINT BETWEEN BACK OF CURB AND FACE OF WALK



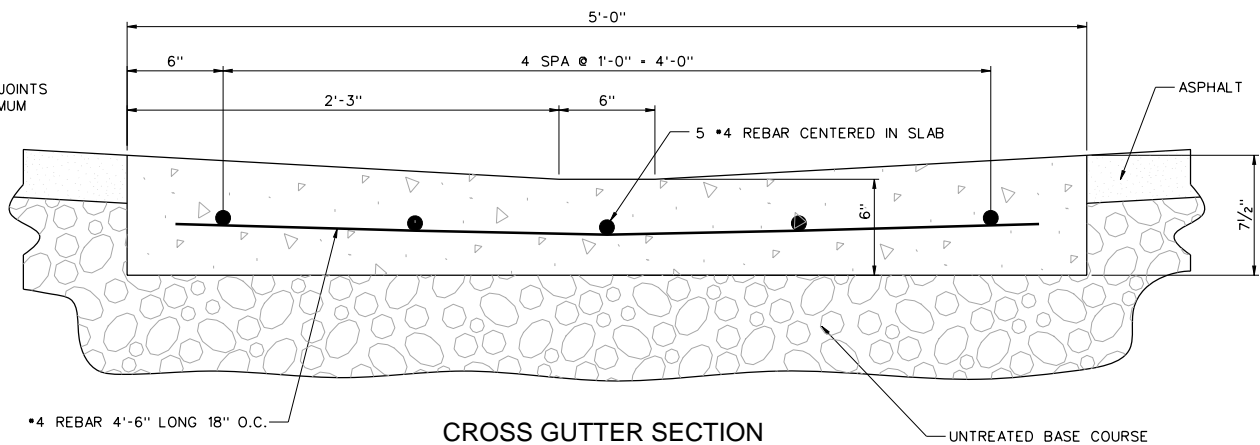
## TYPICAL CURB, GUTTER & SIDEWALK SECTION

NOTE:  
CONTRACTION JOINTS EVERY 10' MAXIMUM  
AND EXPANSION JOINTS EVERY 50' MAXIMUM



## SIDEWALK SECTION

NOTE:  
CONTRACTION JOINTS  
EVERY 5' MAXIMUM



### CROSS GUTTER SECTION

NOTE:  
SAME REINFORCING REQUIRED IN FILLETS SHOWN  
ON STANDARD STREET INTERSECTION AND UTILITY  
LOCATION DRAWING (STANDARD DRAWING 1)