

BERNINA
330 | 350 PE | 380

1 petticoat from
grandma's attic

3 sewing magazines from the 1950s

2 party-free weekends

1 ravishing, easy-to-use
sewing machine

4 raspberry waffles with ice cream

7 cups of coffee

1 new outfit for dancing
and celebrating



made to create

BERNINA



High-contrast LCD display

Semi-automatic
needle threader

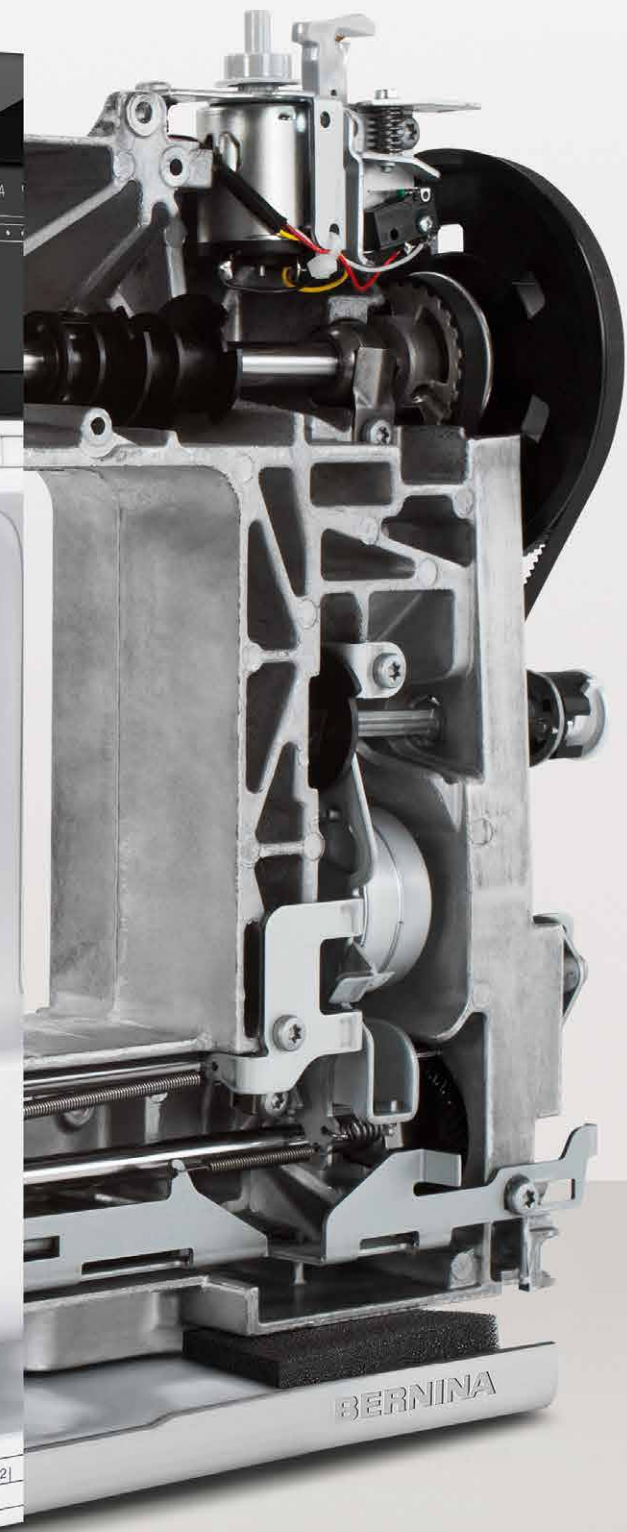
Bright LED
sewing lights

Precision stitching and
strong needle penetration



Direct-selection buttons for quick access to hundreds of stitches

Free Hand System for increased control over every project



Simply the Best Design

The BERNINA 3 Series models lead the way in both design and technology. The contemporary style sets a new benchmark in the world of sewing machines and in the home of every sewer – from the creative beginner to the design-conscious hobby sewer and quilter. Inside, cutting-edge technology and robust, long-lasting quality ensure that nothing stands in the way of your creativity. Outside, a beautiful, user-friendly design – in other words, classic BERNINA.



Simply More Quality

Visual delights, technological masterpieces: the BERNINA 3 Series positively sparkles with new and innovative functions and features. The latest, ultra-high-contrast LCD display lets you keep track of what you are doing. Direct-selection buttons mean quick and easy operation. The start/stop button and slide speed control, semi-automatic needle threader, automatic buttonhole and securing stitch function save you time and allow you to sew, quilt, and patchwork effortlessly and professionally. The bright LED sewing lights, extension table, and Free Hand System make for superb ease of sewing. Stylish sewing really can be this easy!

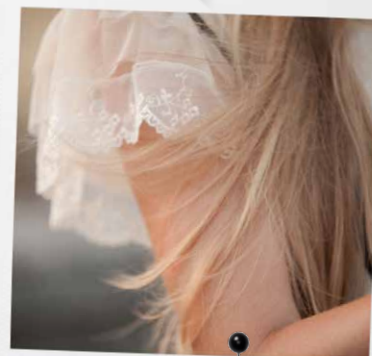
Simply More Inspiration

Whether it's sewing clothes, mending, creating home accessories, or quilting and patchworking, the BERNINA 3 Series models give every sewer the freedom to use an unlimited variety of creative techniques. Any fabric can be sewn and embellished without a problem. Alphabets and decorative stitches let you express your creativity and individuality in myriad ways. And as you grow more ambitious, the 3 Series can be enhanced with a wide range of special accessories.

Free download: patterns and project instructions
available for download at www.bernina.com/3series.



Extension table for a larger work surface



View the complete features list to select the BERNINA 3 Series model that is best for you. Simply stylish sewing.

Features and Functions of the BERNINA 3 Series

General Functions	B 330	350 PE	B 380
BERNINA hook system	CB	CB	CB
Sewing speed (stitches per minute)	900	900	900
Length of freearm to the right of needle	160 mm	160 mm	160 mm
LCD display	x	x	x
LED sewing light	x	x	x
Maximum stitch length	5 mm	5 mm	5 mm
Maximum stitch width	5.5 mm	5.5 mm	5.5 mm
Needle positions	9	9	9
Number of spool pins	2	2	2
Semi-automatic needle threader	x	x	x
Thread cutter	3	3	3
Memory (long-term)	30	30	30
Start/stop button	x	x	x
Speed control	x	x	x
Pattern end	x	x	x
Mirror image	—	—	x

Sewing	B 330	350 PE	B 380
Automatic buttonhole	x	x	x
Manual buttonhole	x	x	x
Button-sew-on program	x	x	x
Needle stop up/down	x	x	x
Reverse sewing	x	x	x
Alphabets	1	2	2
Total number of stitch patterns	97	191	221
Practical stitches	15	18	20
Buttonholes	1	3	5
Decorative stitches	23	63	91
Quilting stitches	3	11	12

Standard Accessories	B 330	350 PE	B 380
Presser feet (soles) included	5	7	7
Reverse pattern foot #1	x	x	x
Overlock foot #2	x	—	x
Automatic buttonhole foot with slide #3A	x	x	x
Zipper foot #4	x	x	x
Blindstitch foot #5	x	x	x
Jeans foot #8	—	—	x
Open embroidery foot #20	—	x	x
Patchwork foot #37	—	x	—
Walking foot #50	—	x	—
FHS presser-foot lifter (knee operated)	—	x	x
Free-arm extension table	x	x	x
Foot control	x	x	x
Dust cover	x	x	x
Accessory bag	x	x	—
Accessory case	—	—	x

www.bernina.com/3series

AMANN
GmbH & Co. KG
Mettler
OESD™

BERNINA