

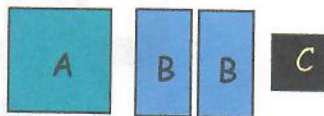
Twist & Shout

Finished Quilt: 33" x 39-1/2"

Charms: 60
 Corner Block Fabric: 1 FQ
 Binding Fabric: 3/8 yard
 Backing Fabric: 1-1/4 yards
 Number of Blocks: 30
 Finished Block: 6-1/2"

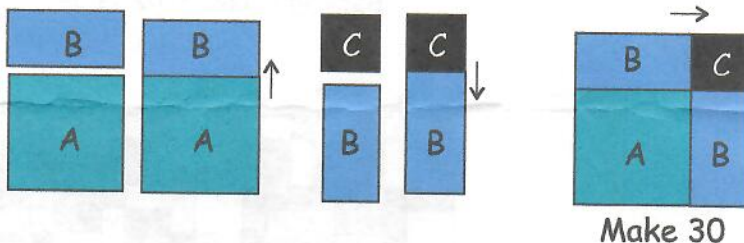
Making the Blocks:

1- For each block you will need (2) contrasting 5" charm squares. From first charm (Fabric A) use the entire 5" square. From the second charm (Fabric B) cut (2) 2-1/2" x 5" rectangles. Cut the corner block fabric (Fabric C) into (30) 2-1/2" squares. Use one "C" square in each of the (30) blocks.



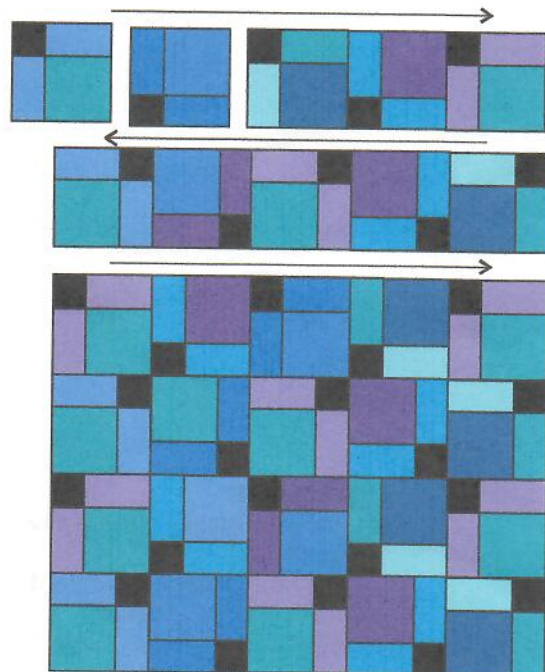
2- Following the diagram below, sew a B rectangle to the top of the A square. Press, following arrow. Sew the remaining matching B rectangle to the C square. Press, following arrow.

3. Sew the two sections together as shown to make the 7" unfinished block. Press. Repeat, with random charm squares, to make a total of (30) blocks.

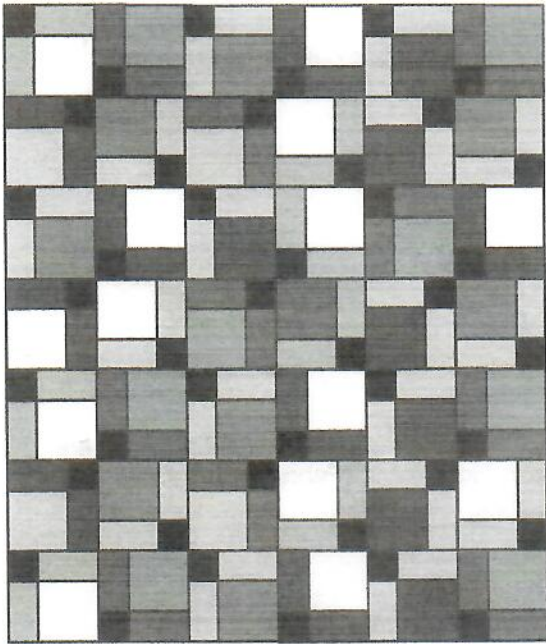


Putting it all Together:

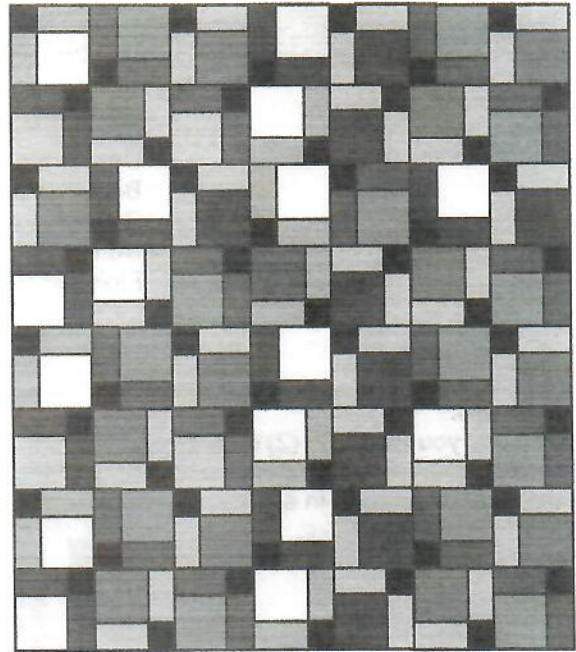
- Following the diagram, lay out the blocks into (6) rows of (5) blocks each. Be careful to rotate them exactly like the diagram. Sew each row together, pressing seam allowances following arrows. Sew the rows together.
- Layer the quilt top, batting, and backing together. Quilt as desired. Bind the quilt.



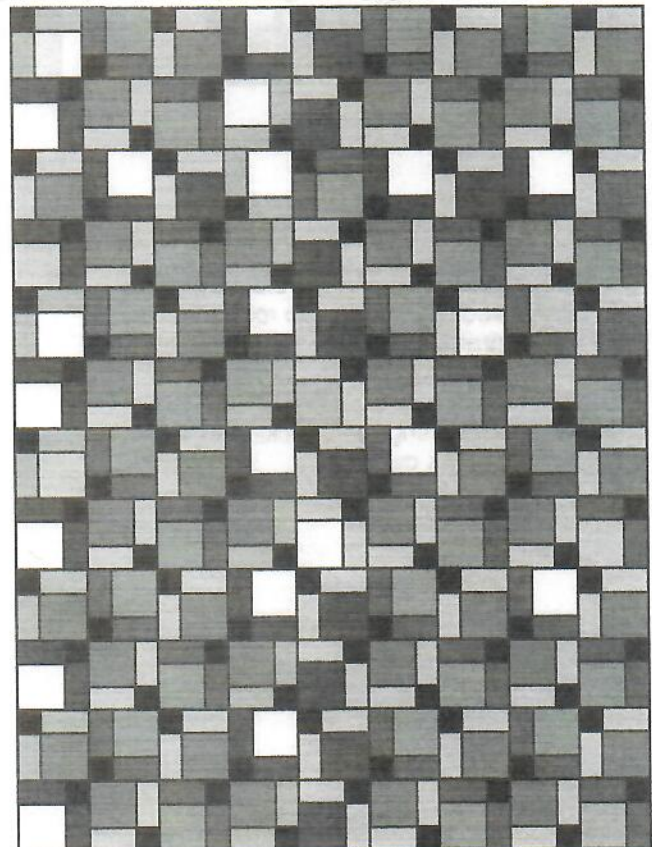
33" x 39-1/2"



39-1/2" x 46"
Number of Blocks: 42 (6x7)
Charms: 84
Corner Block Fabric: 1/3 yard
Binding Fabric: 3/8 yard
Backing Fabric: 3-1/2 yards



46" x 52-1/2"
Number of Blocks: 56 (7x8)
Charms: 112
Corner Block Fabric: 1/3 yard
Binding Fabric: 1/2 yard
Backing Fabric: 3-1/2 yards



59" x 78-1/2"
Number of Blocks: 108 (9x12)
Charms: 216
Corner Block Fabric: 5/8 yard
Binding Fabric: 2/3 yard
Backing Fabric: 5-1/3 yards