

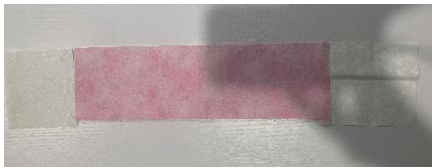
Mystery # 12

Part 3

- Using your light pink 4" x 13" rectangles, stitch two of these rectangles onto opposite sides of your block. Press.



- Using your 4 white 4" squares, attach to either end of both of the remaining rectangles. Press.



- Now attach these two pieced units to the remaining two sides of your block.



- Attach remaining four white triangles in the the same manner as the first step of instructions, centering along each of the four sides. You will want to mark the center of each side of the block and the center your long edge on your triangle to make sure you have these centered.



Embellishment

This is where we can all get creative and do something unique. I am very excited to see all the finished projects.

Machine applique

A heart shape has been supplied if you do not have machine embroidery. You have two different shades of pink fabrics remaining to use as you please for any appliques you may wish to add.

Embroidery

You may wish to embellish your topper with machine embroidery or possibly a combination of embroidery and machine applique.

All files for embroidery will be posted on our website along with the artwork for regular applique if desired.

Here is where you can all get creative, you can choose to use the extra applique fabric if desired, or simply embroider the designs without the fabric, either way will look beautiful.

Enjoy and get creative, and don't forget to post the pictures of your creativity.

Here are some examples of embellishments.

