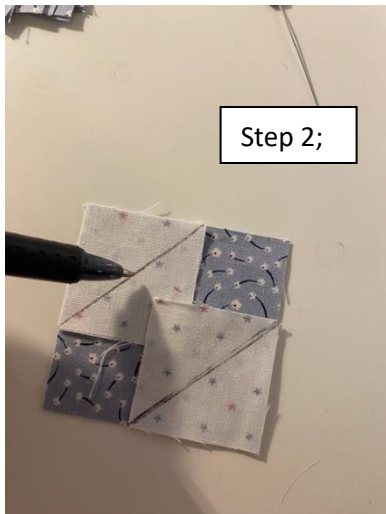




Step 1;

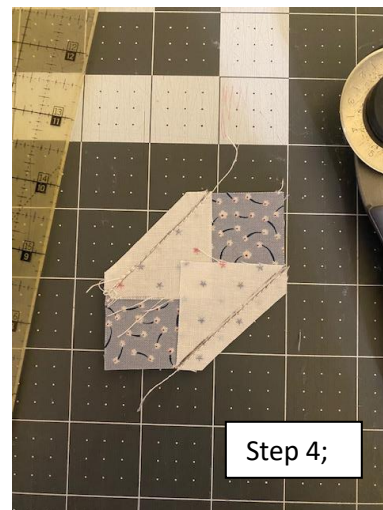
Mystery #41
Sewing Pt. 1



Step 2;



Step 3;



Step 4;



Step 5;

Step 1; Draw a diagonal line on the wrong side of (fabric H) 1.5"x1.5 white w/ mini star squares.

Step 2; Take two (fabric H) and with RST and noting orientation of the diagonal line, place one (fabric H) in the upper left corner on (fabric G-lt. blue w/ small flowers) 2.5"x2.5" square and place the other piece on the bottom right corner.

Step 3; Stitch on drawn line on both white 1.5"x1.5" squares.

Step 4; Trim 1/4" away from sewn line

Step 5; Open and press the (fabric H) triangle towards the corner. Repeat this step for the other corner.

Step 6; Trim block if needed to measure 2.5"x2.5" square.

****repeat all previous steps for fabrics G, fabric F, fabric J & fabric D (there is 9 total 2.5"x2.5" squares of each color)

****repeat all previous steps for fabrics C, fabric K, fabric E & fabric B (there is 6 totally 2.5"x2.5" squares of each color)

Set all units aside!

*refer back to cutting directions for Fabrics for each Letter

Next Steps:

Step 1; Arrange five 3.5"x3.5" print squares, sew RST to make a column. *press.

Column should measure 3.5"x15.5"

Make a total of two of these columns

I used fabrics in this order fabric D, fabric K, fabric F, fabric C & fabric G for both ends.

Step 2; Arrange sixteen 3.5"x3.5" print squares, sew RST to make a row. *press.

Row should measure 3.5"x48.5"

Make a totally of two of these rows

I used fabrics in this order fabric G, fabric C, fabric F, fabric K, fabric D, fabric J, fabric B, fabric E and then repeated the pattern for both.

