

# design55

# Hashtag Mosaic Scarf

## Finished Size

68" long, 6" wide

## Yarn

Color A (background): 1 skein Simply Natural by HiKoo; 40% Baby Alpaca, 40% Fine Merino Wool, 20% Mulberry Silk; 183 yds/100g; Color 100 Slate Gray.

Color B: 1 skein Brew City Yarns; 85% 19.5 Micron Merino, 15% Mulberry Silk; 215 yds/100g; Color Whiskey Worsted PSL.

## Gauge

18 sts = 4"

## Needles

US 10 (6mm)

## Notions

tapestry needle



## ABBREVIATIONS

\* – repeat the instructions following the asterisk as directed

( ) – indicates instructions to be repeated

CO – cast on

k – knit

p – purl

RS - right side

sl1 - slip 1 stitch from left needle to right needle without working it

st(s) – stitch(es)

WS – wrong side

## Hashtag Mosaic Pattern (multiple of 12 + 3)

*Notes:* On RS rows, slip stitches purlwise with yarn in back.

On WS rows, slip stitches purlwise with yarn in front.

Carry color not in use up the side.

Row 1: (RS) Color B, K1, \*k6, sl1, k1, sl1, k3; rep from \* to last 2 sts, k2.

Rows 2 and all (WS) rows: With same color used on previous row, knit the knit stitches and slip the slipped stitches as they face you.

Row 3: (RS) Color A, K1, \*k1, sl1, k5, sl1, k3, sl1; rep from \* to last 2 sts, k2.

Row 5: (RS) Color B, K1, \*( sl1, k1) 6 times; rep from \* to last 2 sts, sl1, k1.

Row 7: (RS) Color A, K1, \*k5, sl1, k1, sl1, k3, sl1; rep from \* to last 2 sts, k2.

Row 9: (RS) Color B, K1, \* sl1, k9, sl1, k1; rep from \* to last 2 sts, sl1, k1.

Row 11: (RS) Color A, K1, \*k5, sl1, k1, sl1, k4; rep from \* to last 2 sts, k2.

Row 13: (RS) Color B, K1, \* sl1, k1, sl1, k9; rep from \* to last 2 sts, sl1, k1.

Row 15: (RS) Color A, K1, \*k1, sl1, k3, sl1, k1, sl1, k4; rep from \* to last 2 sts, k2.

Row 17: (RS) Color B, K1, \*( sl1, k1) 6 times; rep from \* to last 2 sts, sl1, k1.

Row 19: (RS) Color A, K1, \*k1, sl1, k3, sl1, k5, sl1; rep from \* to last 2 sts, k2.

Row 21: (RS) Color B, K1, \*K4, sl1, k1, sl1, k5; rep from \* to last 2 sts, k2.

Row 23: (RS) Color A, K1, \*K1, sl1, k9, sl1; rep from \* to last 2 sts, k2.

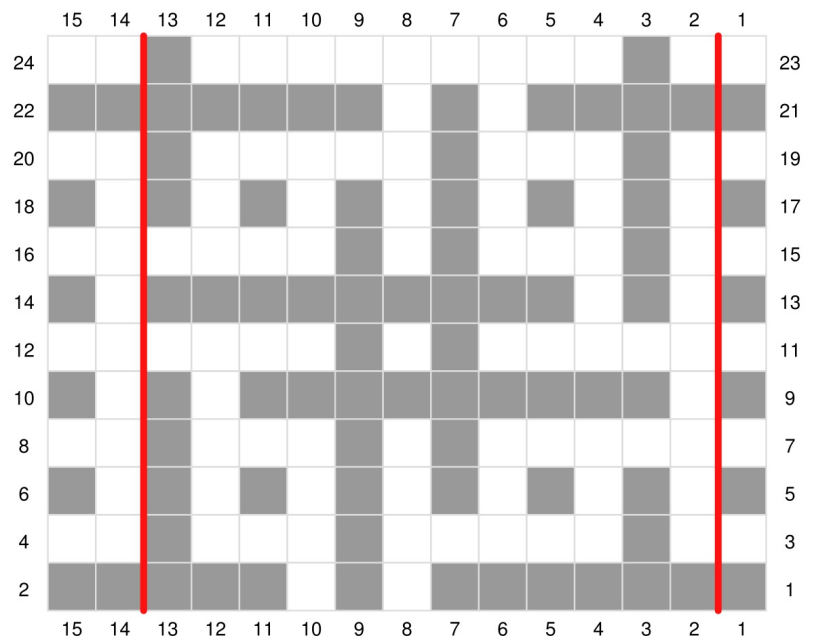
Rep Rows 1 - 24.

## Scarf Directions

With Color A, cast-on 27 sts and knit one row.

Work in Hashtag Mosaic pattern until 68" or desired length, ending with a Row 24.

Bind off with Color A. Weave in ends.



Color A



Color B



Indicates the repeat