



1011 Second Street  
Snohomish, WA 98290  
425-533-2566  
[www.quiltingmayhem.com](http://www.quiltingmayhem.com)

## Chubby Gnome Stuffy

Teacher: Mary Stevens, Shannon Cuddle Ambassador

**\*\*\*Get 15% off purchases for this class when you buy them in person at Quilting Mayhem.\*\*\* We appreciate your business!**

### REQUIRED SUPPLIES

Pattern: [Roly Poly Sitting Gnomes](#) by Happy Heart Patterns

#### Fabric Requirements

**Body:** [Luxe Cuddle Hide](#) or other Cuddle with multidirectional nap: **(1) 14" x 14"**

**Arms:** [Luxe Cuddle](#), [Cuddle 3](#) (smooth), or print: **(1) 12" x 6"** (can be the same as the hat, or contrast)

**Mittens/Boots:** [Cuddle 3](#) (smooth) in contrasting color: **(1) 13" x 6"**

**Nose:** [Cuddle 3](#) (smooth): **(1) 4" x 3"**

**Beard:** [Luxe Dreamy Fur](#): **(1) 7" x 6"**

**Hat:** [Luxe Cuddle](#), [Cuddle 3](#) (smooth), or print: **(1) 18" x 16"**

#### NOTIONS

- ❖ [Coordinating polyester thread](#)
- ❖ [Hand sewing needle](#) for slipstitching
- ❖ [Seam ripper](#)
- ❖ [Flower head pins](#)
- ❖ [Micro serrated scissors](#)
- ❖ [Rotary cutter with new blade, cutting mat, ruler](#)
- ❖ [Polyester stuffing](#)
- ❖ [Poly Pellets](#) for making the weighted bottom, plus a funnel
- ❖ Scrap cotton to make a "bean bag" for weight
- ❖ Long, narrow (1") scrap of batting to wrap wire in hat
- ❖ 18" sturdy, bendable wire, for shaping hat, plus wire cutters
- ❖ 2 chenille stems for arms
- ❖ Sharpie

**Supply list continued on next page**

**Supply list continued**

Follow us on Instagram: @quilting\_mayhem  
and visit us on [www.facebook.com/quiltingmayhem](http://www.facebook.com/quiltingmayhem)



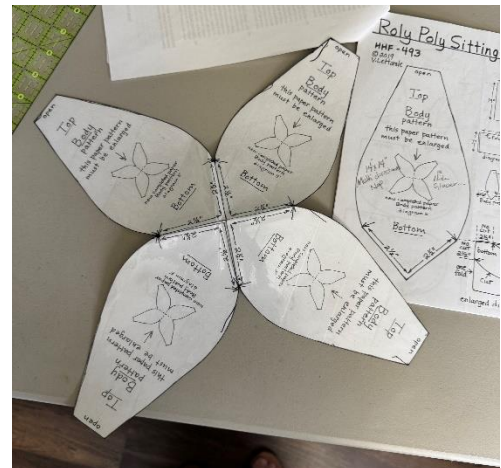
1011 Second Street  
Snohomish, WA 98290  
425-533-2566  
[www.quiltingmayhem.com](http://www.quiltingmayhem.com)

- ❖ Doll needle
- ❖ Turning tool (you can use chop sticks)
- ❖ Optional but recommended: [Hemostat](#)
- ❖ Optional but recommended: [Olfa Precision Knife](#)
- ❖ Optional: [White embroidery floss](#) and [hand embroidery needle](#) for details on mittens and boots

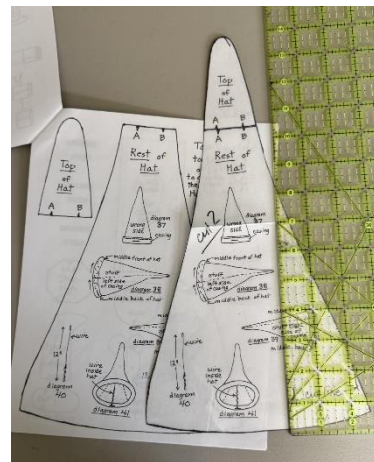
Sewing machine in good working order. Don't forget your power cord and foot control.  
Other machine supplies include: regular presser foot, walking foot, bobbins, and a [90/14 stretch needle](#).

#### PLEASE NOTE:

You will need 4 copies of the body pattern piece. Please copy the piece and tape together as shown here. The pieces **DO NOT** need to be enlarged.



The hat pattern pieces need to be taped together as shown here.



Follow us on Instagram: @quilting\_mayhem  
and visit us on [www.facebook.com/quiltingmayhem](https://www.facebook.com/quiltingmayhem)