

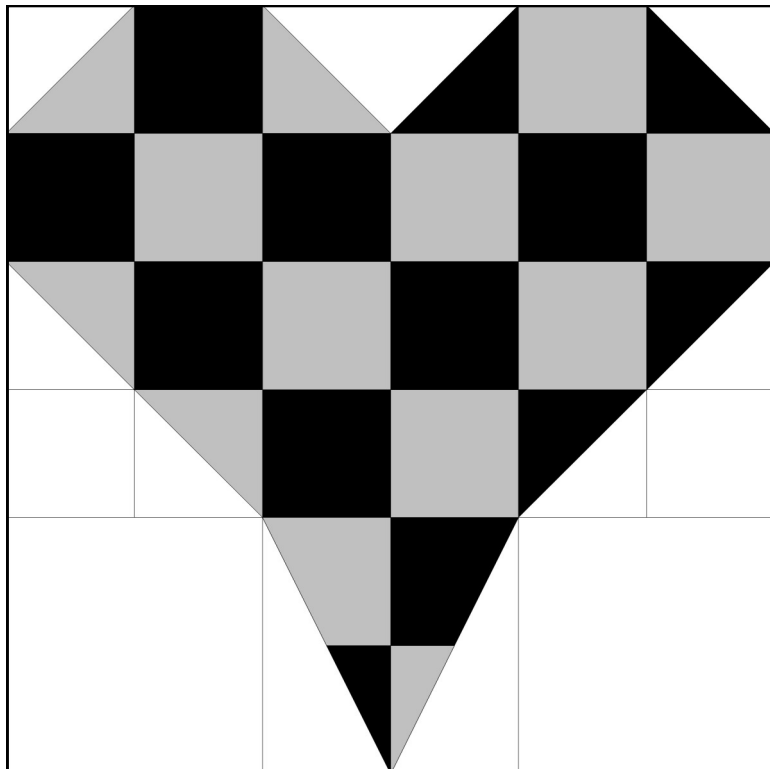
*Needle
in a
Hayes Stack*

Checkerboard Love

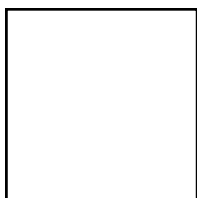
Block

Block 6

February 11, 2015



Finished Block Size is 12" x 12"

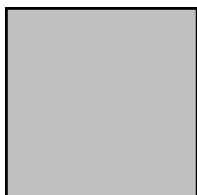


Use 2 ½" **Half Square Triangle** to cut 8 **HST***

Cut 2 - 4 ½" x 4 ½", **Square**

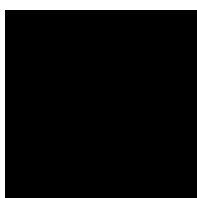
Cut 2 - 2 ½" x 2 ½", **Square**

Cut 1 - 4 ½" x 3 ⅙", **Rectangle**, to make 1 pair of **HTT***



Use 2 ½" **Half Square Triangle** to cut 4 **HST**

Cut 9 - 2 ½" x 2 ½", **Square**

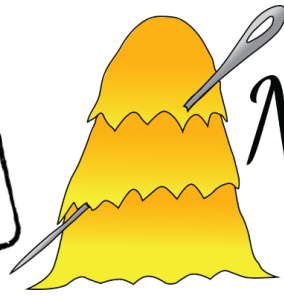


Use 2 ½" **Half Square Triangle** to cut 4 **HST**

Cut 9 - 2 ½" x 2 ½", **Square**

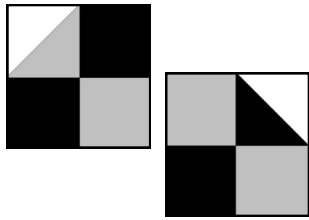
HST - Half Square Triangle
TT* - Tall Triangle
HTT* - Half Tall Triangle*

The Goddess Block Project



Needle
in a
Hayes Stack

Make 1 of each



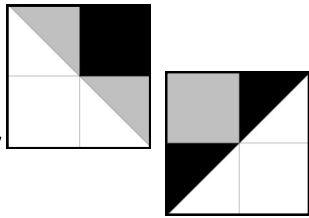
Corner Triangle Unit

Instructions for 1 unit:

Use 3 - 2 1/2" x 2 1/2", Square

Combine 1 - Color 2 1/2" HST with 1 - 2 1/2" Background HST as per diagrams to the left.

Make 1 of each



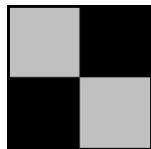
3 Color Half Square Triangle Unit

Instructions for 1 unit:

Use 1 - 2 1/2" x 2 1/2", Square

Combine 2 - Color 2 1/2" HST with 2 - 2 1/2" Background HST as per diagrams to the left.

Make 1



4 Patch Unit

Use 4 - 2 1/2" x 2 1/2", Square



Make 1

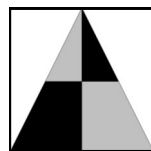


Dip Down Unit

Use 2 - 2 1/2" x 2 1/2", Square

Combine 2 - Color 2 1/2" HST with 2 - 2 1/2" Background HST as per diagram to the left.

Make 1



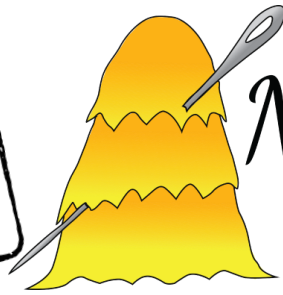
4 Patch Tall Triangle Unit

Use 4 - 2 1/2" x 2 1/2", Square to make a 4 Patch Unit trim with

Tall Triangle (on The Goddess Tool).

Combine the TT with a pair of background HTT.

The
Goddess Block
 Project



*Needle
 in a
 Haystack*

Combine 2 - Corner Triangle Units,
 2 - 3 Color Half Square Triangle Units,
 1 - 4 Patch Unit, 1 - Dip Down Unit,
 1 - 4 Patch Tall Triangle Unit
 and 2 - 4 1/2" Squares to make the
Checkerboard Love Block.

