

# Face Mask/Cover

tie version with pocket for filtration material

This pattern and tutorial are offered for your personal use or charitable donation, only.  
Please do not sell.



## Materials

Click here for a [New York Times](#) article on the best materials to use for masks.  
Cotton fabrics should be pre-washed and dried before cutting.

### Large/Men

Outer Fabric: 14" x 7"  
Lining Fabric: 12" x 7"  
Tie: 60"

### Medium/Young Adult or Women

Outer Fabric: 13" x 6½"  
Lining Fabric: 11" x 6½"  
Tie: 55"

### Small/Children

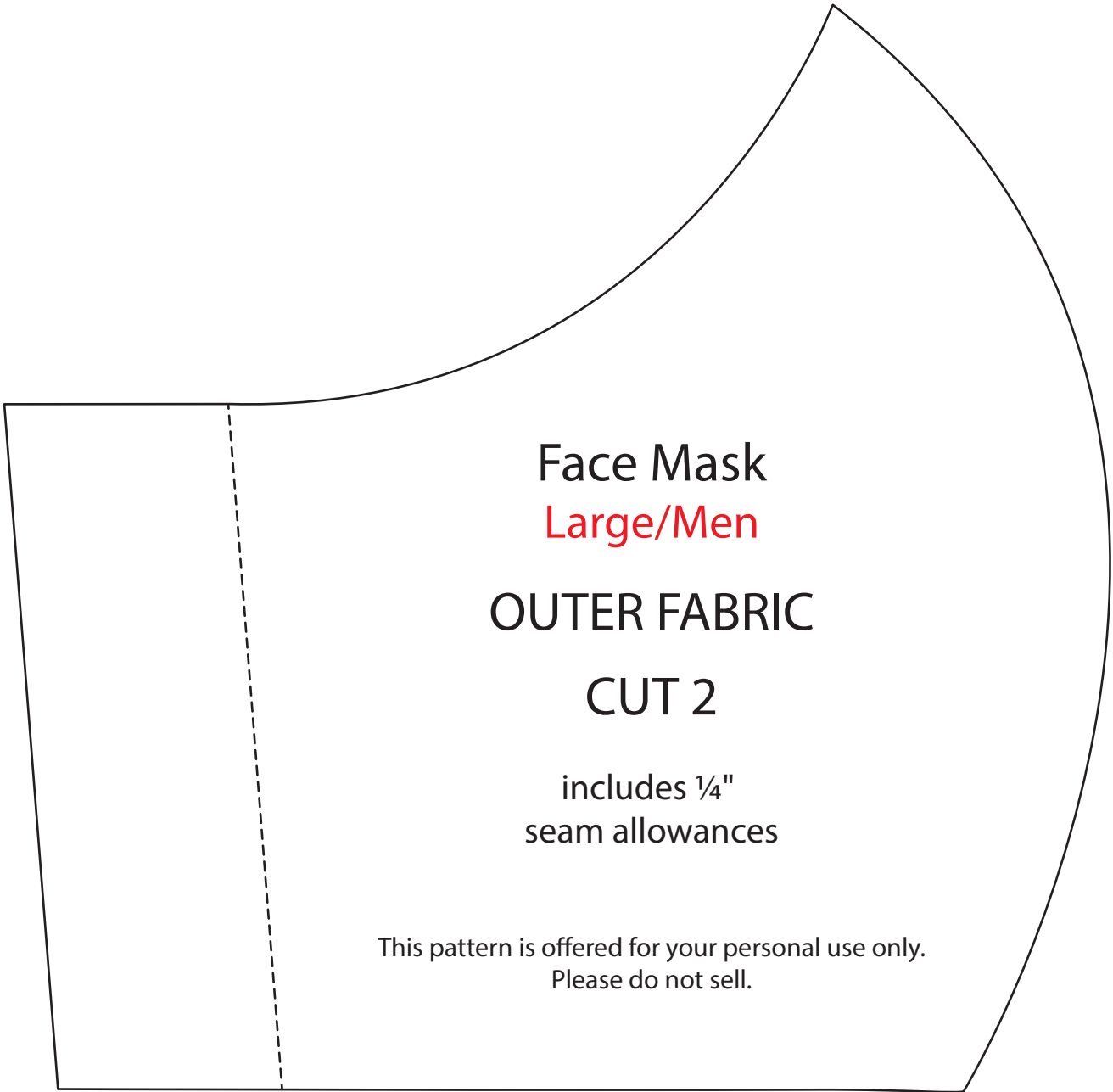
Outer Fabric: 13" x 6"  
Lining Fabric: 10" x 6"  
Tie: 50"

### Extra Small/Toddler or Smaller Children

Outer Fabric: 12" x 6"  
Lining Fabric: 10" x 6"  
Tie: 50"

- A third layer of fabric, such as flannel, can be cut using the lining pattern and added as either lining or interlining. Baste lining and interlining together and treat as one layer.
- Optional - Pipe cleaner, twist tie or something similar can be used for shaping nose
- Shoelaces work well for ties because they are easily washed and dried. For personal use, ½" grosgrain ribbon or twill tape can be used, however twill tape stretches.





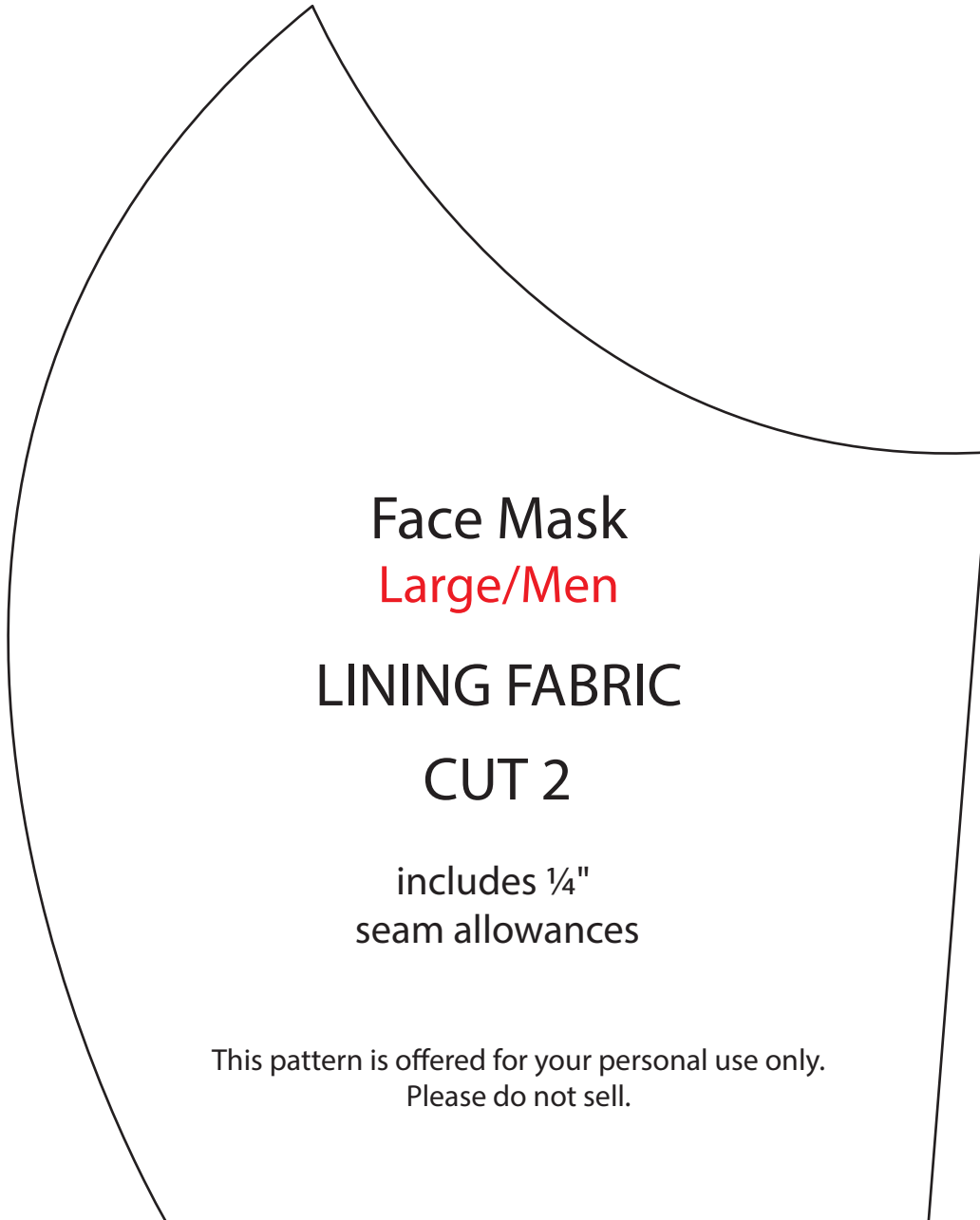
Face Mask  
Large/Men

OUTER FABRIC  
CUT 2

includes 1/4"  
seam allowances

This pattern is offered for your personal use only.  
Please do not sell.

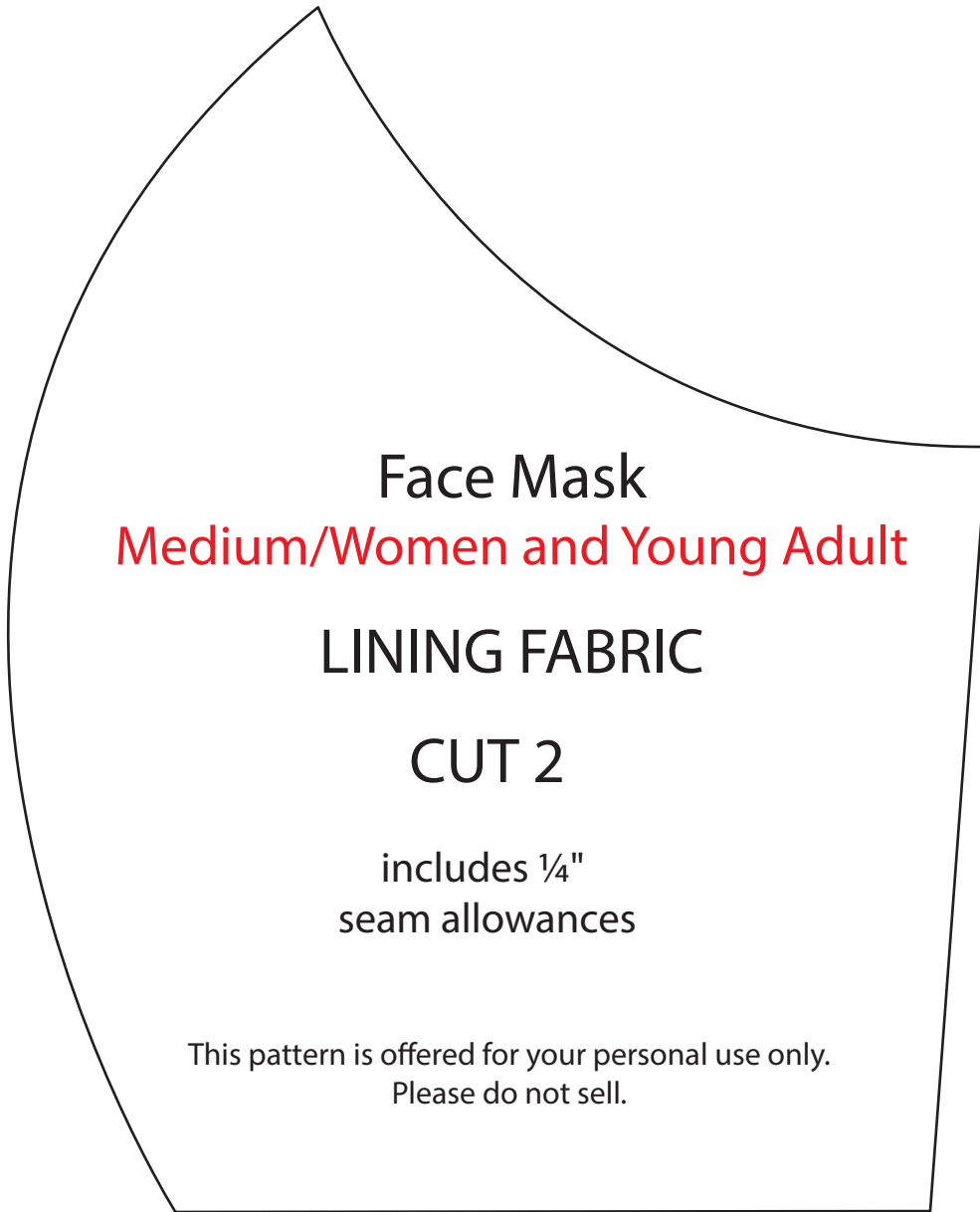
printed  
square  
should  
measure  
one inch



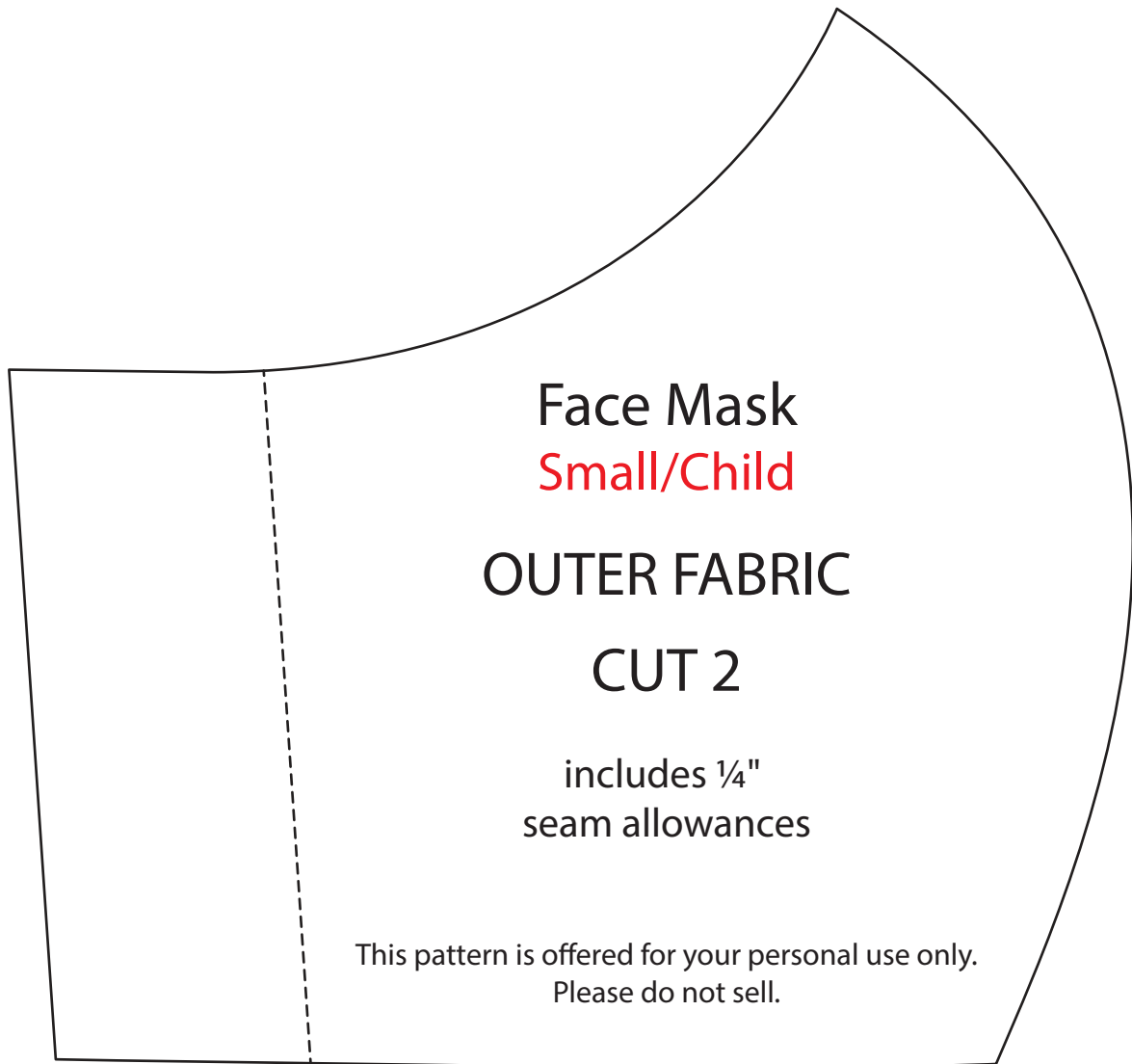
printed  
square  
should  
measure  
one inch



printed  
square  
should  
measure  
one inch



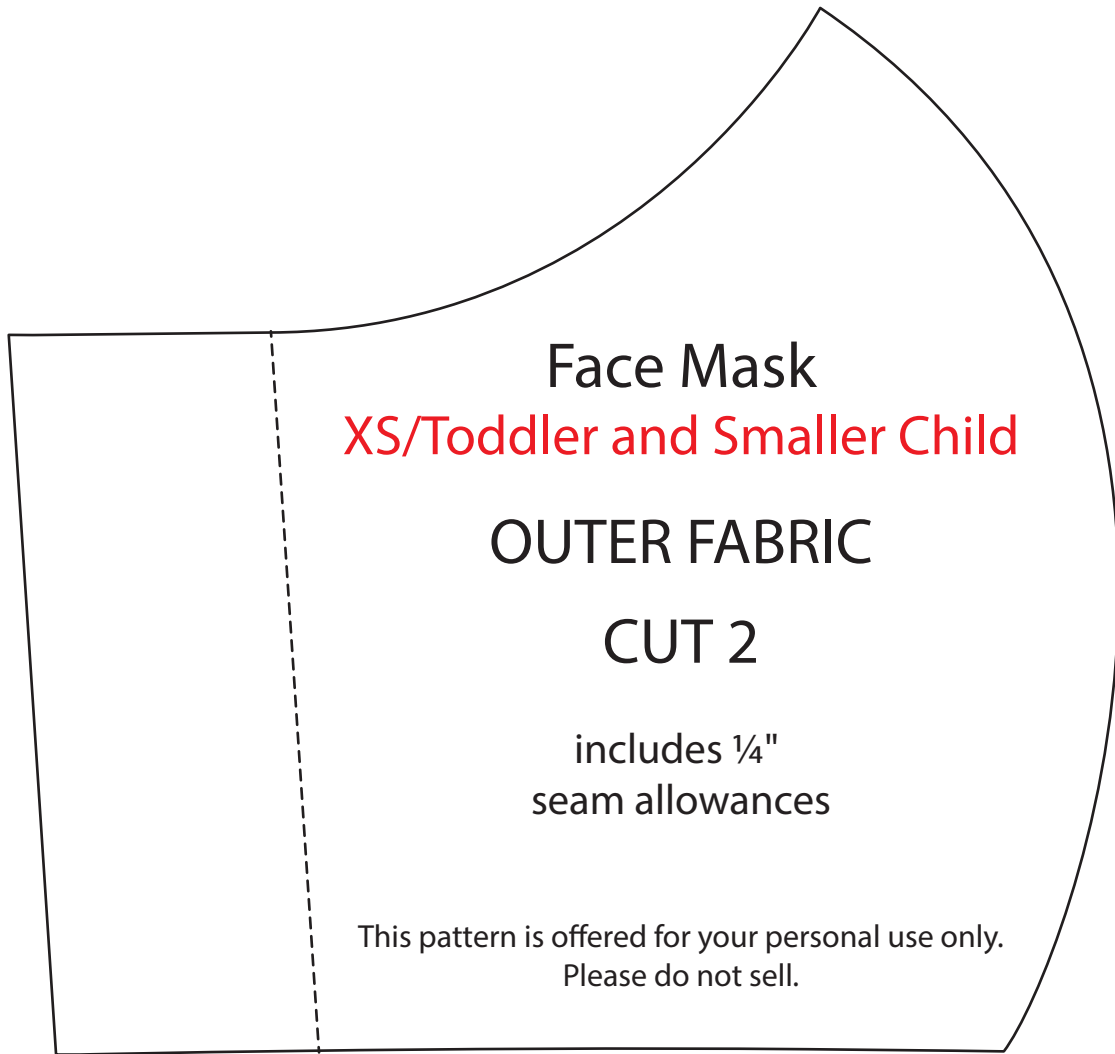
printed  
square  
should  
measure  
one inch



printed  
square  
should  
measure  
one inch

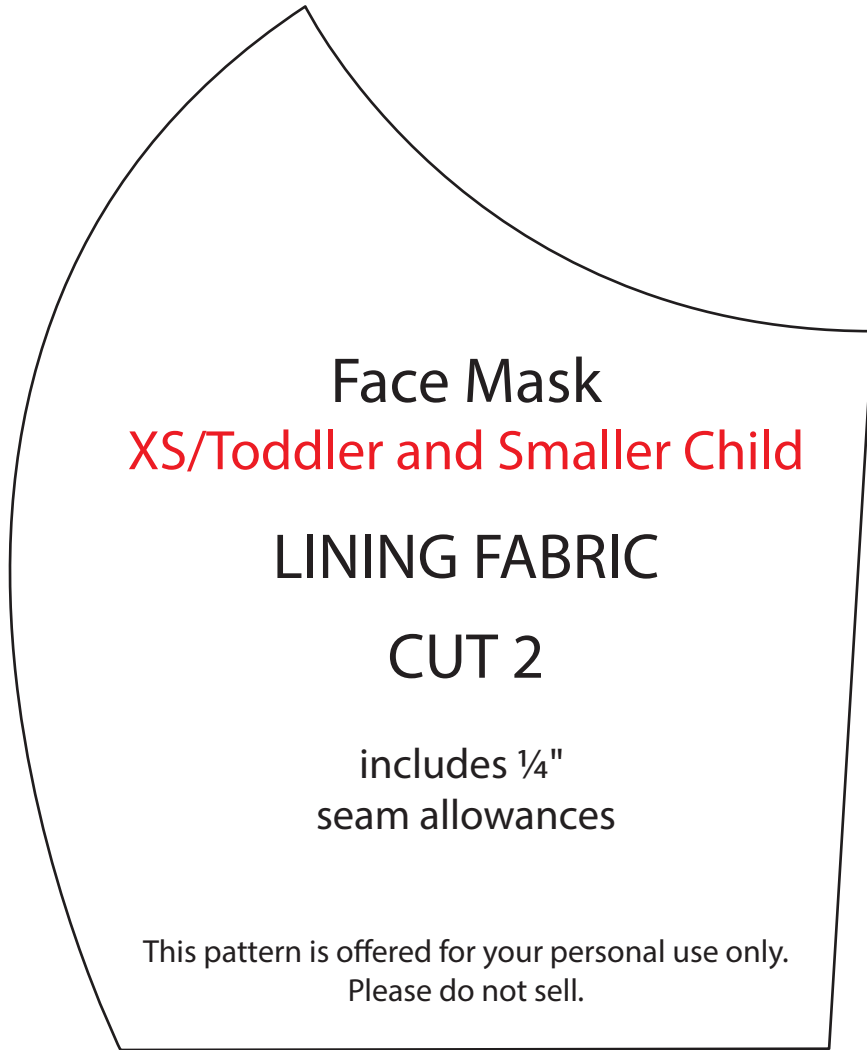


printed  
square  
should  
measure  
one inch



printed  
square  
should  
measure  
one inch





printed  
square  
should  
measure  
one inch

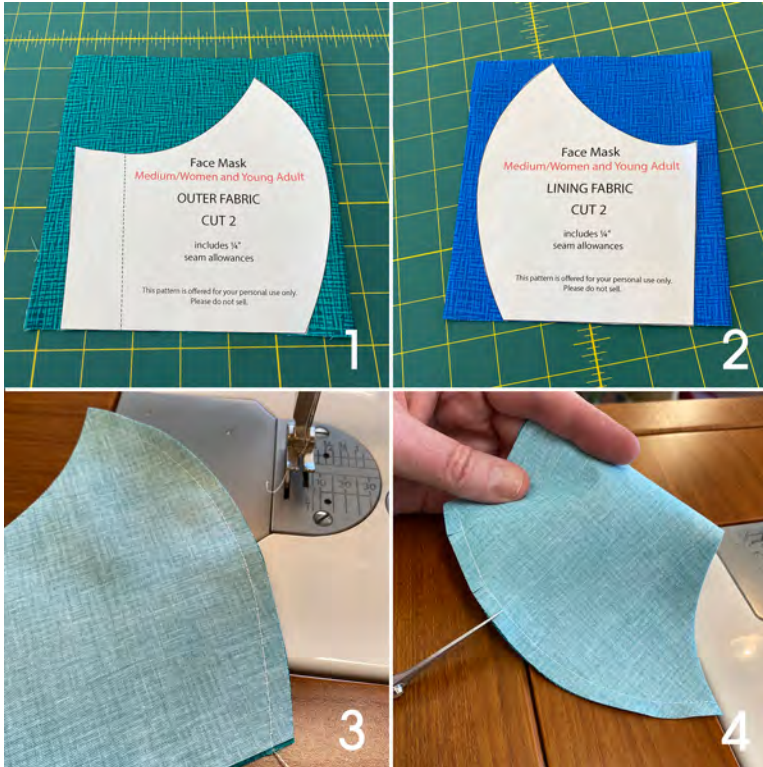


www.PatrickLose.com

# Face Mask

## Tie version with pocket for filtration material

This pattern and tutorial are offered for your personal use or charitable donation, only.  
Please do not sell.



1. Fold fabric in half, lengthwise, and cut 2 OUTER mask pieces.

2. Repeat step 1 to cut 2 LINING pieces.

3. With right sides of fabric together (RST) and aligned, stitch along the curved edge using a 1/4" seam allowance.

4. Clip along seam to stitching line.

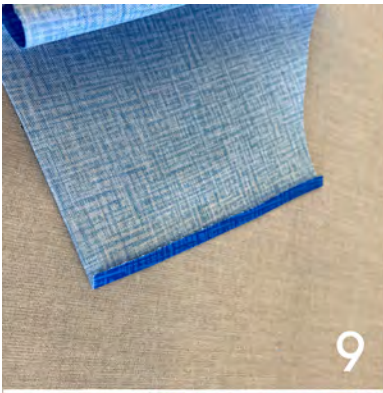


5. Press seam allowance to the right of the seam.

6. Topstitch to the right of the seam to secure and close the seam allowance.

7. Stitching should be about 1/8" to the right of the seam.

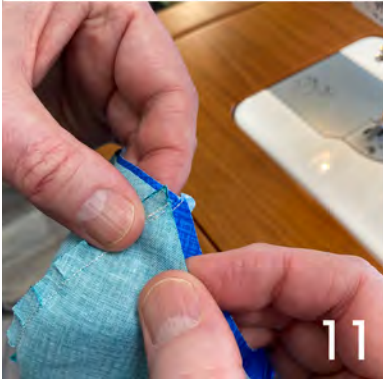
8. Curved seam with topstitching



9



10



11



12

9. For lining, fold edges of short straight sides  $\frac{1}{8}$ " toward the wrong side of the fabric. Press. Fold another  $\frac{1}{8}$ " and press.

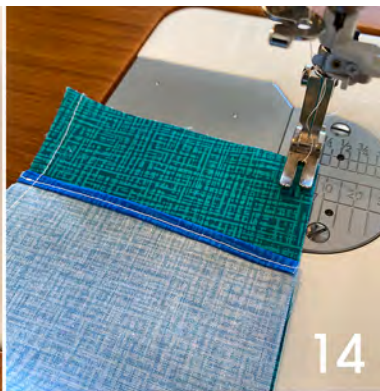
10. Stitch to finish edge.

11. RST, align upper, curved edges of mask and lining, matching center front seams.

12. Pin matched center seams.



13



14

13. Stitch along the upper, curved edge, beginning at the outer edge of the mask fabric.

14. Stitch the bottom edge of the mask in the same manner.



15



16

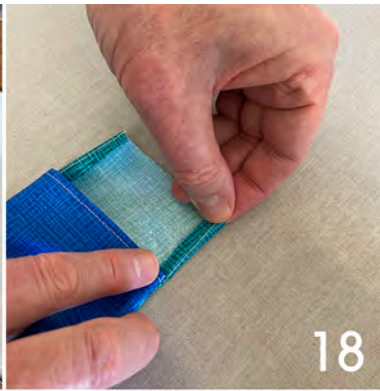
15. Top and bottom mask edges stitched

16. Turn mask right side out

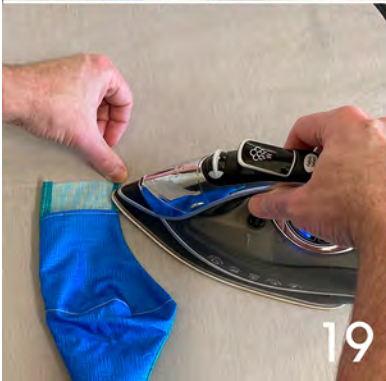




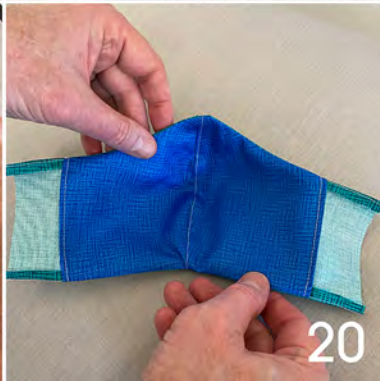
17



18



19



20

17. Turn mask/lining fully to the right side, smoothing and finger pressing the seams.

18 & 19. Fold outer edges of mask along top and bottom stitching lines, as shown. Press.

20. Fully turned and pressed



21



22

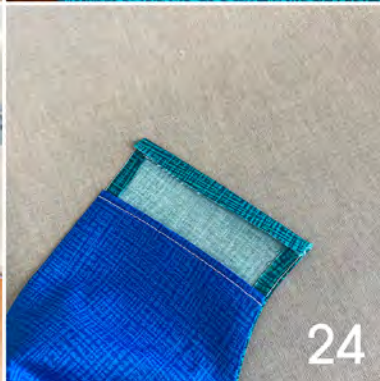
21 & 22: Place a pin 1/2" from the finished top edge and 1-1/2" from the curved center front seam, as shown.

23. Open out the mask and stitch through mask and lining, between the two pinned points, to create a casing above the nose for the twist tie or pipe cleaner.

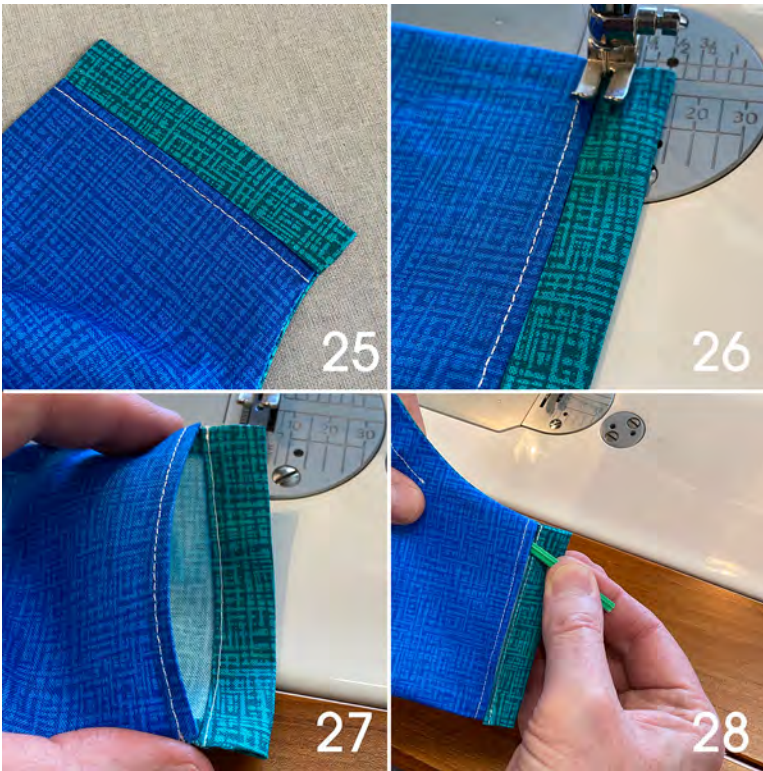
24. Press the remaining short, raw edges 1/4" to the inside.



23



24

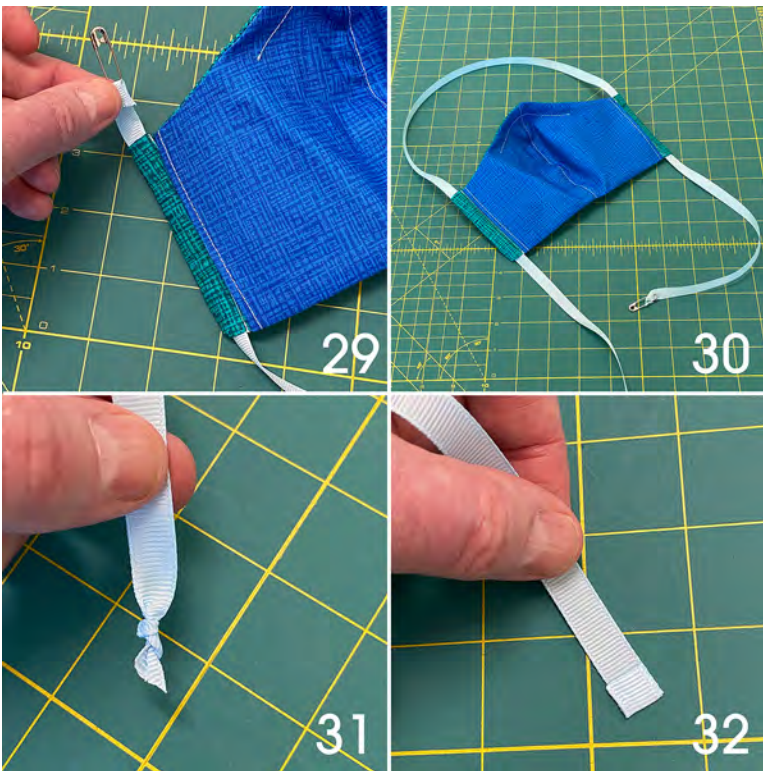


25. Bring folded edge to the hemmed lining edge.

26. Topstitch just inside the folded edge.

27. This creates the tie casing, and leaves an open pocket for filtration material.

28. Insert twist tie or pipe cleaner through the pocket and into the nose casing.



29. Attach a safety pin to one end of the tie and feed the tie up through one casing.

30. Feed the tie through the other casing, from the top.

31. Knot the ends of the ties to keep them from fraying.

32. Ends can also be finished by double-folding and fusing with a bit of Steam-A-Seam® fusible adhesive tape.





Please follow us on social media for more inspiration



[www.PatrickLose.com](http://www.PatrickLose.com)