



*Free Spirit*

## Light in the Forest Quilt

Featuring *Light in the Forest* by Sue Penn

Sink into layers of light and leaves in this bold, bright design. Sue Penn's signature Forest fabric is sliced, then stitched together with our Designer Essentials Solid Black to make this enticingly easy yet stunning quilt.

**Collection:** Light in the Forest by Sue Penn

**Technique:** Piecing

**Skill Level:** Intermediate

**Finished Size:** 50" x 64" (1.27m x 1.63m)

*All possible care has been taken to assure the accuracy of this pattern. We are not responsible for printing errors or the manner in which individual work varies. Please read the instructions carefully before starting this project. If kitting it is recommended a sample is made to confirm accuracy.*

Project designed by Sue Penn  
 Tech edited by Alison M. Schmidt

## Fabric Requirements

DESIGN	COLOR	ITEM ID	YARDAGE
(A) Forest Panel	Multi	PWSP012.MULTI**	1½ yards (1.37m)
(B) Firefly	Multi	PWSP013.MULTI	2 yards (1.83m)
(C) Designer Essentials Solids	Black	CSFSESS.BLACK	1½ yards (1.37m)
(D) Medallions	Cherry	PWSP016.CHERRY	¼ yard (0.23m)
(E) Brushstrokes	Royal	PWSP018.ROYAL	⅛ yard (0.11m)
(F) Medallions	Green Apple	PWSP016.GREENAPPLE	⅛ yard (0.11m)
(G) Sunset	Multi	PWSP017.MULTI*	½ yard (0.46m)

\* denotes binding

\*\* REQUIRES 1 PANEL

## Backing (Purchased Separately)

**44" (111.76cm) wide**

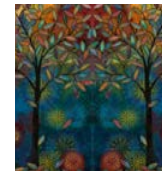
Foliage Turquoise PWSP014.TURQUOISE 3 yards (2.74m)

OR

**108" (274.32cm) wide** 1¾ yards (1.60m)

## Additional Recommendations

- 100% cotton thread in colors to match
- 58" x 72" (147.32cm x 182.88cm) batting



(A)



(B)



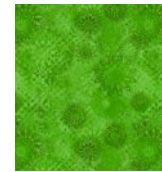
(C)



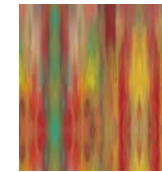
(D)



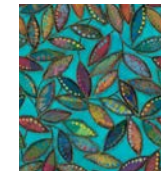
(E)



(F)



(G)



Backing  
44"  
(111.76cm)

## Cutting

**WOF = Width of Fabric**

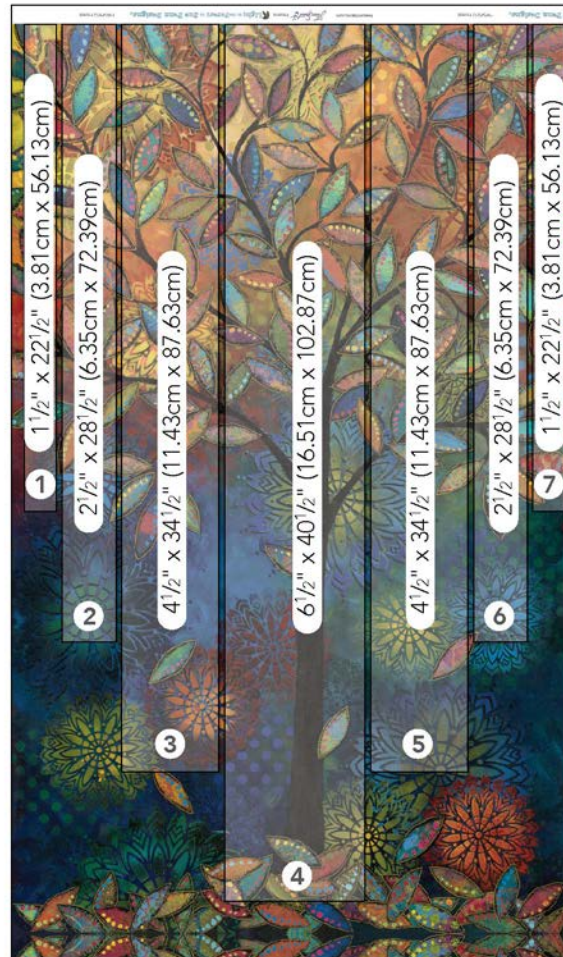
### Fabric A, fussy-cut:

**Note:** Refer to the cutting guide for placement, centering the widest cut piece over the tree trunk, and cutting succeeding smaller pieces one from each side. Align all pieces at the printed selvage edge of the panel or yardage as shown. Label cut pieces numerically, to keep them in order.

- (1)  $6\frac{1}{2}$ " x  $40\frac{1}{2}$ " (16.51cm x 102.87cm) rectangle
- (2)  $4\frac{1}{2}$ " x  $34\frac{1}{2}$ " (11.43cm x 87.63cm) rectangles
- (2)  $2\frac{1}{2}$ " x  $28\frac{1}{2}$ " (6.35cm x 72.39cm) rectangles
- (2)  $1\frac{1}{2}$ " x  $22\frac{1}{2}$ " (3.81cm x 57.15cm) rectangles

### Fabric B, cut:

- (1)  $6\frac{1}{2}$ " (16.51cm) x WOF; sub-cut
  - (2)  $6\frac{1}{2}$ " (16.51cm) squares
- (1)  $4\frac{1}{2}$ " (11.43cm) x WOF; sub-cut
  - (4)  $4\frac{1}{2}$ " x  $9\frac{1}{2}$ " (11.43cm x 24.13cm) rectangles
- (2)  $2\frac{1}{2}$ " (6.35cm) x WOF; sub-cut
  - (4)  $2\frac{1}{2}$ " x  $12\frac{1}{2}$ " (6.35cm x 31.75cm) rectangles
- (2)  $1\frac{1}{2}$ " (3.81cm) x WOF; subcut
  - (4)  $1\frac{1}{2}$ " x  $15\frac{1}{2}$ " (3.81cm x 39.37cm) rectangles
- (11)  $4\frac{1}{2}$ " (11.43cm) x WOF; sub-cut
  - (26)  $4\frac{1}{2}$ " (11.43cm) squares and reserve remainder for outer borders



Cutting Diagram

### Fabric C, cut:

- (6)  $2\frac{1}{2}$ " (6.35cm) x LOF; sub-cut
  - (4)  $2\frac{1}{2}$ " x  $52\frac{1}{2}$ " (6.35cm x 133.35cm) for vertical sashing and side inner borders
  - and (2)  $2\frac{1}{2}$ " x  $42\frac{1}{2}$ " (6.35cm x 107.95cm) for top/bottom inner borders
- (6)  $1\frac{1}{2}$ " (3.81cm) x LOF; sub-cut
  - (6)  $1\frac{1}{2}$ " x  $52\frac{1}{2}$ " (3.81cm x 133.35cm) for vertical sashing

### Fabric D, cut:

- (2)  $2\frac{1}{2}$ " (6.35cm) x WOF; sub-cut
  - (26)  $2\frac{1}{2}$ " (6.35cm) squares

### Fabric E, cut:

- (1)  $2\frac{1}{2}$ " (6.35cm) x WOF; sub-cut
  - (14)  $2\frac{1}{2}$ " (6.35cm) squares

### Fabric F, cut:

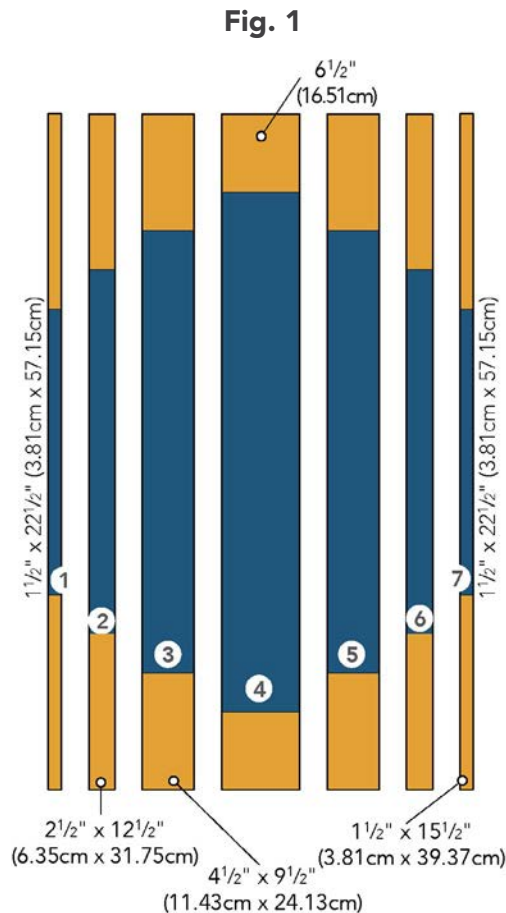
- (1)  $2\frac{1}{2}$ " (6.35cm) x WOF; sub-cut
  - (12)  $2\frac{1}{2}$ " (6.35cm) squares

### Fabric G, cut:

- (6)  $2\frac{1}{2}$ " (6.35cm) x WOF for binding

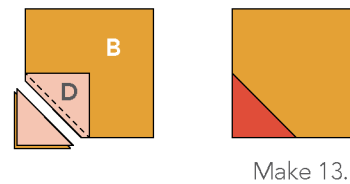
## Sewing

1. Making sure to keep the fussy-cut **Fabric A** rectangles in numerical order, arrange same-sized **Fabric B** rectangles on each short end of a fussy-cut **Fabric A** rectangle as shown (**Fig. 1**). Sew the rectangles in each vertical row together along adjacent short edges. Each sewn strip should measure  $52\frac{1}{2}$ " (133.35cm) in length. Press.



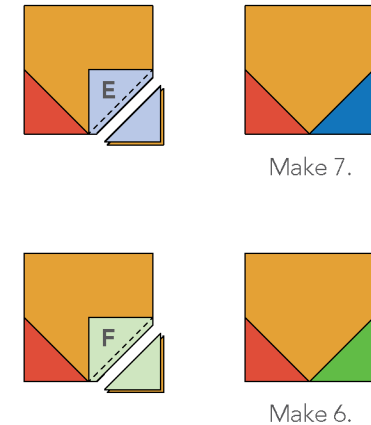
2. Place a  $1\frac{1}{2}$ " x  $52\frac{1}{2}$ " (3.81cm x 133.35cm) **Fabric C** strip between each step 1 strip. Join the strips along adjacent long edges to make the quilt center. Press.
3. Sew (1)  $2\frac{1}{2}$ " x  $52\frac{1}{2}$ " (6.35cm x 133.35cm) **Fabric C** strip to each long edge of the quilt center. Press.
4. Draw a guideline from corner to corner on the wrong side of each  $2\frac{1}{2}$ " (6.35cm) **Fabric D** square. Place (1) marked **Fabric D** square right sides together in the lower left corner of (1)  $4\frac{1}{2}$ " (11.43cm) **Fabric B** square as shown, aligning outer edges (**Fig. 2**). Sew on the marked line. Trim the excess corner fabric, leaving a  $\frac{1}{4}$ " (.64cm) seam allowance. Press the triangle corner open. Make 13 units.

**Fig. 2**



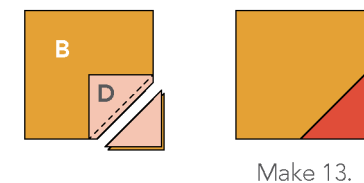
5. Draw a guideline from corner to corner on the wrong side of each  $2\frac{1}{2}$ " (6.35cm) **Fabric E** square. Place (1) marked **Fabric E** square right sides together in the lower right corner of a step 4 unit. Sew on the marked line (**Fig. 3**). Trim the excess corner fabric, leaving a  $\frac{1}{4}$ " (.64cm) seam allowance. Press the triangle corner open. Make 7 red/blue units. Repeat with  $2\frac{1}{2}$ " (6.35cm) **Fabric F** squares to make 6 red/green units.

**Fig. 3**



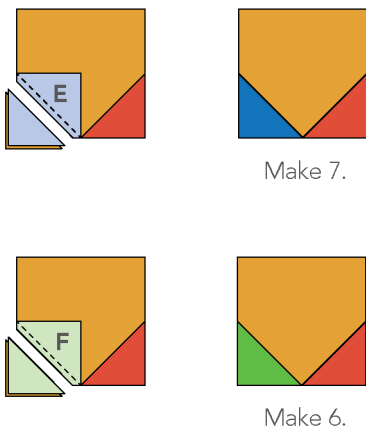
6. Place (1) marked **Fabric D** square right sides together in the lower right corner of (1)  $4\frac{1}{2}$ " (11.43cm) **Fabric B** square as shown, aligning outer edges (**Fig. 4**). Sew on the marked line. Trim the excess corner fabric, leaving a  $\frac{1}{4}$ " (.64cm) seam allowance. Press the triangle corner open. Make 13 units.

**Fig. 4**



7. Place (1) marked **Fabric E** square right sides together in the lower left corner of a step 6 unit. Sew on the marked line (**Fig. 5**). Trim the excess corner fabric, leaving a  $\frac{1}{4}$ " (.64cm) seam allowance. Press the triangle corner open. Make 7 red/blue units. Repeat with  $2\frac{1}{2}$ " (6.35cm) **Fabric F** squares to make 6 red/green units.

Fig. 5



8. Referring to the **Quilt Layout Diagram** on page 6 for unit placement, arrange the step 5 and 7 units in (2) vertical rows of (13) units each. Sew the units in each row together along adjacent edges. Press. Sew one row to each side of the quilt center. Press.

## Top Assembly

9. Sew (1)  $2\frac{1}{2}$ " x  $52\frac{1}{2}$ " (6.35cm x 133.35cm) **Fabric C** strip to each long edge of the quilt center. Press. Sew (1)  $2\frac{1}{2}$ " x  $42\frac{1}{2}$ " (6.35cm x 107.95cm) **Fabric C** strip to the top and the other to the bottom of the quilt center. Press.
10. Join the remaining  $4\frac{1}{2}$ " (11.43cm) x WOF **Fabric B** strips together along short edges. Cut (2) side borders  $4\frac{1}{2}$ " x  $56\frac{1}{2}$ " (11.43cm x 143.51cm). Cut (2) top/bottom borders  $4\frac{1}{2}$ " x  $50\frac{1}{2}$ " (11.43cm x 128.27cm).
11. Join (1) **Fabric B** side border to each side of the quilt top. Press. Join (1) **Fabric B** top/bottom border to the upper edge, and the other to the lower edge of the quilt top. Press.

## Finishing

12. Sew together the (7)  $2\frac{1}{2}$ " x WOF (6.35cm x WOF) binding strips end to end using diagonal seams. Press the seams open. Press the binding strip in half wrong sides together.
13. Layer the backing (wrong side up), batting, and quilt top (right side up). Baste the layers together and quilt as desired. Trim excess batting and backing even with the quilt top after quilting is completed.
14. Leaving an 8" (20.32cm) tail of binding, sew binding to top of quilt through all layers matching all raw edges. Miter corners. Stop approximately 12" (30.48cm) from where you started. Lay both loose ends of binding flat along quilt edge. Where these two loose ends meet, fold them back on themselves and press to form a crease. Using this crease as your stitching line, sew the two open ends of the binding together right sides together. Trim seam to  $\frac{1}{4}$ " (.64cm) and press open. Finish sewing binding to quilt.
15. Turn the binding to the back of the quilt and hand stitch in place.

Quilt Layout Diagram

