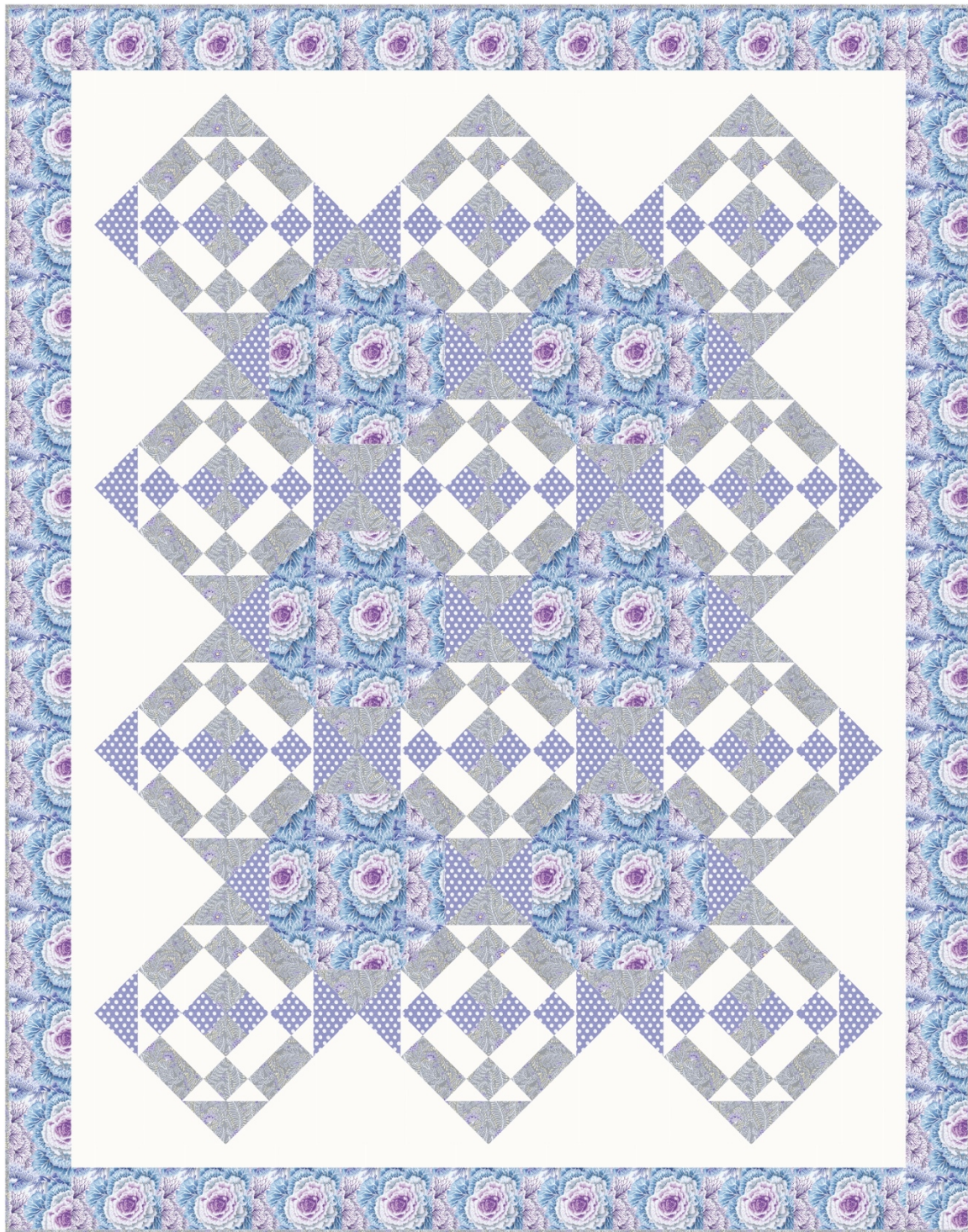


NATALIE'S QUILT



BY MARGARET LEUWEN OF MARGARET LEUWEN QUILTING

FABRIC REQUIREMENTS

	Throw 3 x 4 62" x 79"	Twin 4 x 5 79" x 96"	Full 5 x 5 96" x 96"	Queen 5 x 6 96" x 113"	King 6 x 6 113" x 113"
Print 1 	2 Yards	2 ¾ Yards	3 ¼ Yards	3 ½ Yards	4 ½ Yards
Print 2 	1 ¼ Yards	1 ¾ Yards	2 ¼ Yards	2 ¼ Yards	3 Yards
Print 3 	2 Yards	3 Yards	3 ¾ Yards	4 ¼ Yards	5 Yards
Background	3 ¼ Yards	3 2/3 Yards	4 Yards	4 ¾ Yards	5 ¼ Yards
Backing	5 Yards	8 2/3 Yards	8 2/3 Yards	10 ¼ Yards	13 ½ Yards
 Binding	½ Yard	¾ Yards	¾ Yard	¾ Yard	1 Yard
Batting	Twin	Queen	King	King	King

NOTIONS

[Creative Grids Cat's Cradle Tool](#)

FABRIC NOTES

This quilt uses three Kaffe Fassett for Free Spirit Fabrics prints: Fern (PWGP147.GreyX_420), Spot (GP70.China_420), and Brassica (PWPJ051.SKYXX_420). The Background Fabric used is Winter White. **A limited number of [fabric kits](#) are available for purchase on my website.**

*If you would like to make this quilt using Fat Quarters, you will need the following amounts: Throw 23, Twin 33, Full 40, Queen 43, and King 53 **PLUS BACKGROUND!***

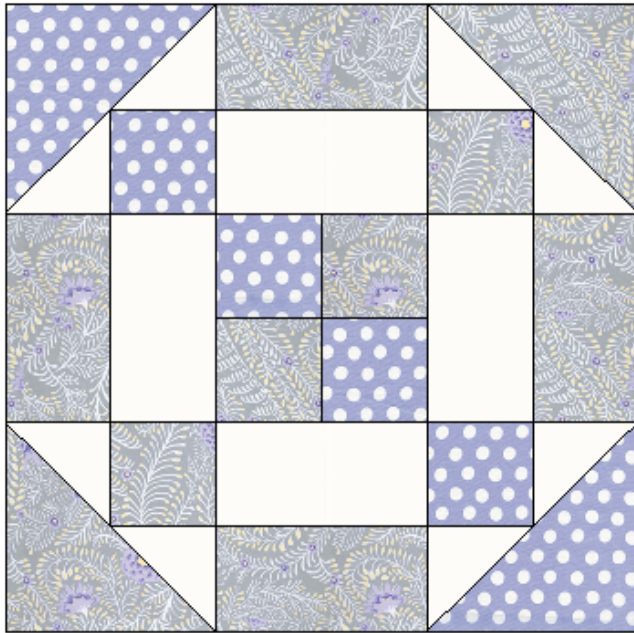
PATTERN NOTES

The written instructions that follow are for the throw-sized quilt.

CUTTING NOTES

All measurements include a ¼" seam unless otherwise noted. Border strips lengths are exact length needed. You may want to cut them longer to account for any variations in your ¼". Please refer to Margaret Leuwen's video, [How to Attach Borders](#), for helpful tips.

THE MAIN BLOCK



FABRIC REQUIREMENTS

Print #1, Print #2 and Background

CUTTING

FROM PRINT #1, CUT:

24 ($2\frac{3}{4}$ ") Squares
12 (5" x 6") Rectangle
16 ($2\frac{3}{4}$ " x 20") strips

FROM PRINT #2, CUT:

24 ($2\frac{3}{4}$ ") Squares
12 (5" x 6") Rectangle
4 ($2\frac{3}{4}$ " x 20") strips

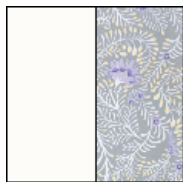
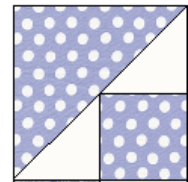
FROM BACKGROUND, CUT:

24 ($2\frac{3}{4}$ " x $3\frac{3}{4}$ ") Rectangles
12 ($2\frac{3}{4}$ " x 20") strips

MAIN BLOCK ASSEMBLY

Cat's Cradle Unit

Follow the cutting instructions on your ruler for the 4" finished unit. Make 48.
With the ruler, you will make 2 at a time.



Two-Patch Unit

1. Join 1 background $2\frac{3}{4}$ " strip and 1 Print#1 $2\frac{3}{4}$ " strip.
2. Make 12 Strip set #1. From strip sets, cut 48 ($4\frac{1}{2}$ ") 2 Patch Unit.
3. Square up to $4\frac{1}{2}$ ".

[See video at 9:25.](#)

Four-Patch Unit

1. Join 1 ($2\frac{3}{4}$ ") Print #1 strip and 1 ($2\frac{3}{4}$ ") Print #2 strip
2. Make 4 Strip set #2. From Strip sets, cut 24 ($2\frac{3}{4}$ " wide) Segment #1.
3. Join 2 Segment #1 to make 1 Four patch Unit. See diagram. Make 12 Four Patch Units
4. Square up to $4\frac{1}{2}$ ".

[See video at 1:56](#)

