



Free Spirit 

Salsa Dance Quilt

Featuring Sassy Summer Salsa by
Jane Sassaman

Fussy cut celosia and folk art borders create a tile design in this simple show stopping quilt.

Collection:	Sassy Summer Salsa by Jane Sassaman
Technique:	Fussy Cutting, Templates, Piecing, Quilting
Skill Level:	Advanced Beginner
Finished Size:	82" (208.28cm) square
Finished Block Size:	25½" (64.77cm) square

All possible care has been taken to assure the accuracy of this pattern. We are not responsible for printing errors or the manner in which individual work varies. Please read the instructions carefully before starting this project. If kitting, it is recommended a sample is made to confirm accuracy.

Project designed by Jane Sassaman | Tech edited by Alison M. Schmidt

Fabric Requirements

DESIGN	COLOR	ITEM ID	YARDAGE
(A) Celosia	Red	PWJS127.RED	3 ³ / ₄ yards (3.43m)
(B) Hand Crafted Cottons	Tomato	HCJS001.TOMATO	1 yard (0.91m)
(C) Small Sunflower	Red	PWJS132.RED	1 ¹ / ₂ yards (1.37m)
(D) Folk Art	Red	PWJS133.RED	4 ⁵ / ₈ yards (4.23m)
(E) Sarape	Salsa	PWJS137.SALSA*	1 ⁵ / ₈ yards (1.49m)
(F) Small Dancing Daisies	Green	PWJS130.GREEN	1/2 yard (0.46m)

* includes binding

Backing (Purchased Separately)

44" (1.18m) wide

Dancing Daises Gold PWJS129.GOLD 7³/₄ yards (7.09m)

OR

108" (2.74m) wide 2⁵/₈ yards (2.40m)

Additional Recommendations

- 100% cotton thread in colors to match
- 90" (2.29m) square batting
- (2) 12" x 18" sheets of template plastic



(A)



(B)



(C)



(D)



(E)



(F)



**Backing
44"**

Cutting:

WOF = Width of Fabric

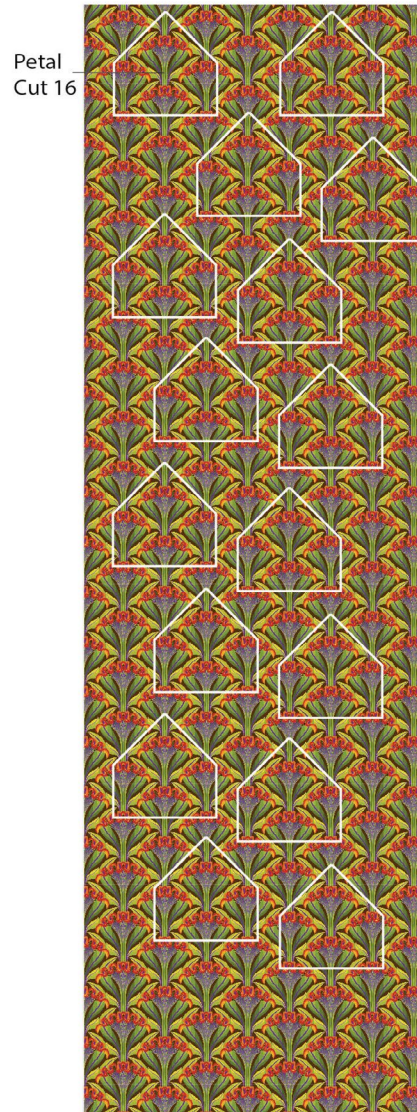
Notes:

- Templates can be found on pages 9-12.
- Cut out and tape together the pieces of the Petal template. Trace the Petal and Half Petal templates onto template plastic and cut on the outside lines. To cut fabric Petals and Right Half Petals, place templates, right side up, on the right side of a single layer of fabric. To cut fabric Left Half Petals, place the template, wrong side up on the right side of a single layer of fabric. Trace around the template and then cut out. The fabric pieces will have bias edges so handle with care.
- Cutting diagrams have been provided for fussy cut fabric pieces for the quilt. *These diagrams are only to be used as a guide.* Bought yardages are cut straight from the bolt and the beginning and ending points of the repeat will differ from the diagrams. There has been extra yardage allowed in the fabric requirements to ensure that all of the fussy cut pieces can be cut no matter where the print repeat begins.

Fabric A, fussy cut:

(16) Petals; centered on two flowers with the flowers towards the point at the top of the Petal

Fabric A Cutting Diagram



Fabric B, cut:

- (1) $9\frac{3}{4}$ " x WOF; sub-cut
- (4) $9\frac{3}{4}$ " squares, cut along both diagonals into (16) triangles
- (10) 2" x WOF; sub-cut
- (14) 2" x $12\frac{1}{2}$ " rectangles
- (10) 2" x $9\frac{1}{2}$ " rectangles
- (4) 2" x $6\frac{1}{2}$ " rectangles
- (12) 2" x 5" rectangles

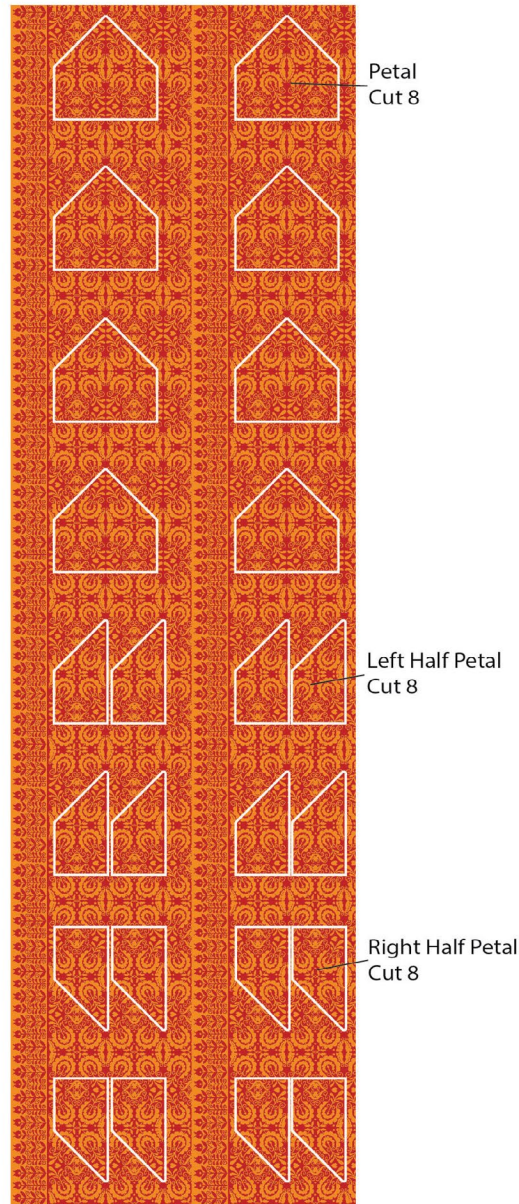
Fabric C, cut:

- (1) $9\frac{1}{2}$ " x WOF; sub-cut
- (4) $9\frac{1}{2}$ " squares
- (8) $4\frac{1}{2}$ " x WOF for the outer border (fussy cut if desired in matching pairs)

Fabric D, cut:

- (8) Petals; centered over a folk art motif
- (8) Left Half Petals; covering the left half of the Petals folk art motif
- (8) Right Half Petals; covering the right half of the Petals folk art motif

Fabric D Cutting Diagram



Fabric E, cut:

- (2) $6\frac{7}{8}$ " x WOF; sub-cut
- (8) $6\frac{7}{8}$ " squares
- (4) $4\frac{1}{2}$ " squares
- (8) $1\frac{1}{2}$ " x WOF for the inner border
- (10) $2\frac{1}{2}$ " x WOF for binding

Fabric F, cut:

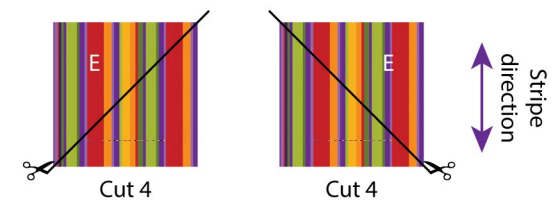
- (1) $9\frac{1}{2}$ " x WOF; sub-cut
- (1) $9\frac{1}{2}$ " square
- (4) 5 " x $9\frac{1}{2}$ " rectangles
- (1) 5 " x WOF; sub-cut
- (4) 5 " squares

Instructions

All seam allowances are $\frac{1}{4}$ " (.64cm) and pieces are sewn right sides together. Press seam allowances following the black arrows.

1. Lay out the (8) $6\frac{7}{8}$ " **Fabric E** squares with the stripe running up and down as indicated by the double arrow. Cut (4) squares on the diagonal from the lower left to the upper right corner. Cut the remaining (4) squares on the diagonal from the lower right to the upper left corner. (**Fig. 1**) There will be (16) **Fabric E** triangles.

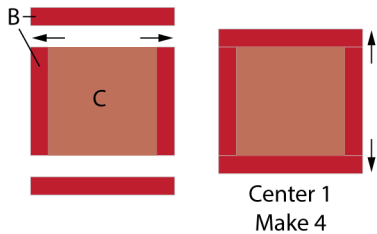
Fig. 1



Block 1

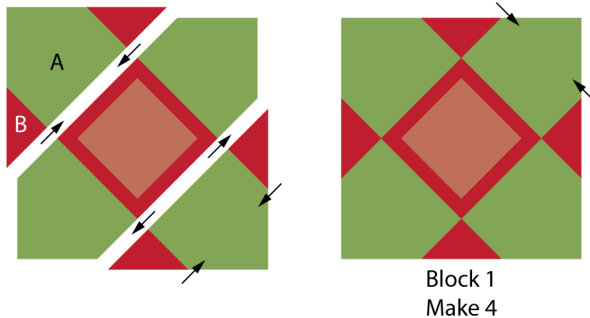
2. Sew a 2" x 9½" **Fabric B** rectangle to the left and right edges of a 9½" **Fabric C** square. Sew a 2" x 12½" **Fabric B** rectangle to the top and bottom to complete (1) Center 1 (12½" square). (**Fig. 2**) Repeat to make (4) Center 1.

Fig. 2



3. Lay out (4) **Fabric A** Petals, (4) **Fabric B** triangles and (1) Center 1. (**Fig. 3**) Sew the pieces into diagonal rows, aligning the square corners of the triangles with the Petals. Sew the rows together to complete (1) Block 1 (26" square). Repeat to make (4) Block 1.

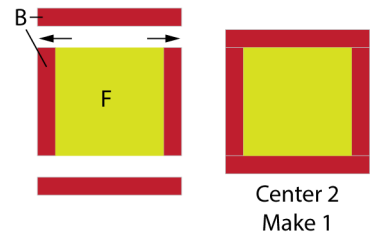
Fig.3



Block 2

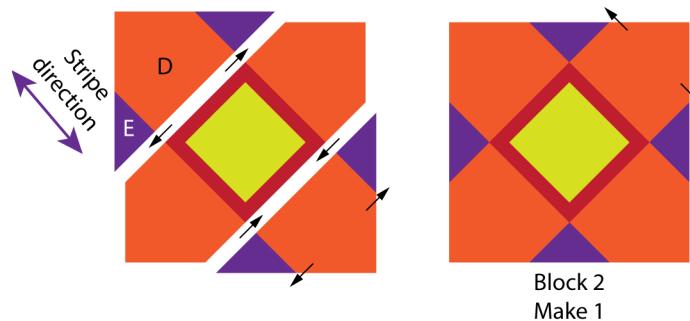
4. Sew a 2" x 9½" **Fabric B** rectangle to the left and right edges of a 9½" **Fabric F** square. Sew a 2" x 12½" **Fabric B** rectangle to the top and bottom to complete (1) Center 2 (12½" square). (**Fig. 4**)

Fig. 4



5. Lay out (4) **Fabric D** Petals, (4) **Fabric E** triangles and (1) Center 2, following the arrow for the placement of the **Fabric E** stripe. (**Fig. 5**) Sew the pieces into diagonal rows, aligning the square corners of the triangles with the Petals. Sew the rows together to complete (1) Block 2. Square up to 26" x 26".

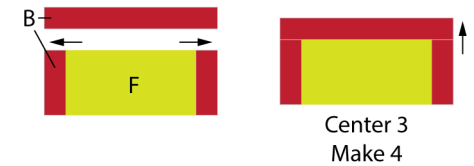
Fig. 5



Side and Top/Bottom Triangles

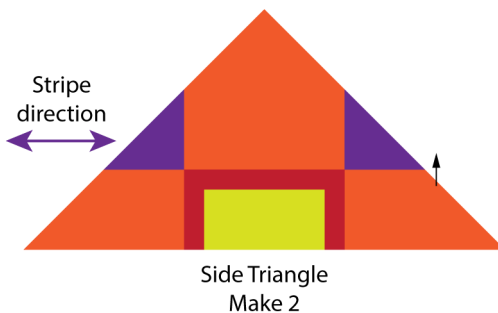
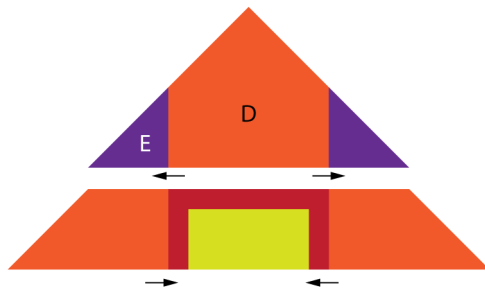
6. Sew a 2" x 5" **Fabric B** rectangle to the left and right edges of 5" x 9½" **Fabric F** rectangle. Sew a 2" x 12½" **Fabric B** rectangle to the top to complete (1) Center 3 (6½" x 12½"). (**Fig. 6**) Repeat to make (4) Center 3.

Fig. 6



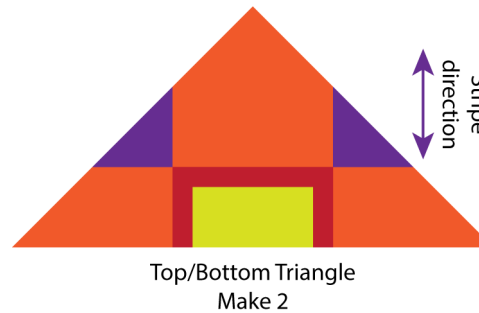
7. Lay out (1) **Fabric D** Left Half Petal, (1) **Fabric D** Right Half Petal, (2) **Fabric E** triangles and (1) Center 3, with the **Fabric E** stripes oriented as shown by the arrow. (**Fig. 7**) Sew the pieces into rows. Sew the rows together to complete (1) Side Triangle. Repeat to make (2) Side Triangles.

Fig. 7



8. Repeat Step 7, orienting the stripes as shown in **Fig. 8** to make (2) Top/Bottom Triangles.

Fig. 8



Corner Triangles

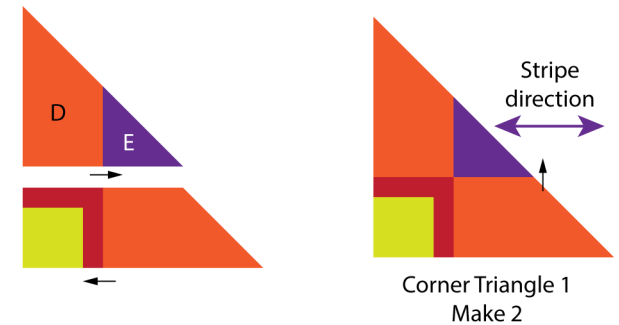
9. Sew (1) 2" x 5" **Fabric B** rectangle to the left edge of 5" **Fabric F** square. Sew (1) 2" x 6½" **Fabric B** rectangle to the top to complete (1) Center 4 (6½" square). (**Fig. 9**) Repeat to make (4) Center 4.

Fig. 9



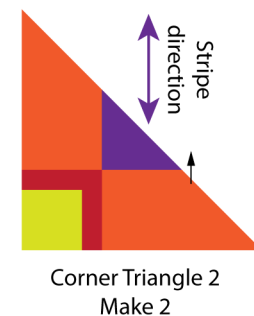
10. Lay out (1) **Fabric D** Right Half Petal, (1) **Fabric E** triangle, (1) **Fabric D** Left Half Petal, and (1) Center 4, with the **Fabric E** stripes oriented as shown. (**Fig. 10**) Sew the pieces into rows. Sew the rows together to complete (1) Corner Triangle 1. Repeat to make (2) Corner Triangle 1.

Fig. 10



11. Repeat Step 10, orienting the stripes as shown in **Fig. 11** to make (2) Corner Triangle 2.

Fig. 11



Quilt Top Assembly

Note: Follow the **Quilt Layout** diagram on page 8 while assembling the quilt. Measure the quilt center before cutting borders and adjust measurements given if necessary.

12. Lay out Blocks 1 and 2 and the Side, Top/Bottom and Corner Triangles. Sew together into diagonal rows. Sew the rows together to complete the Quilt Center (72½" square).
13. Sew together (2) **Fabric E** Inner border strips, end-to-end into a long strip. Repeat to make a second strip. Cut (2) 1½" x 72½" Inner side border strips. Sew a **Fabric E** Inner side border strip to the left and right sides of the Quilt Center. Press the seam allowances towards the border.
14. Sew together (2) **Fabric E** Inner border strips, end to end. Repeat to make a second strip. Cut (2) 1½" x 74½" inner top/bottom border strips. Sew a **Fabric E** Inner top/bottom border strip to the top and bottom sides of the Quilt Center (74½" square). Press the seam allowances towards the border.
15. Sew a pair of **Fabric C** outer border strips together end-to-end. Repeat to make (4) strips. Cut (4) 4½" x 74½" Outer border strips. Sew an Outer Border strip to the left and right sides of the Quilt Center.

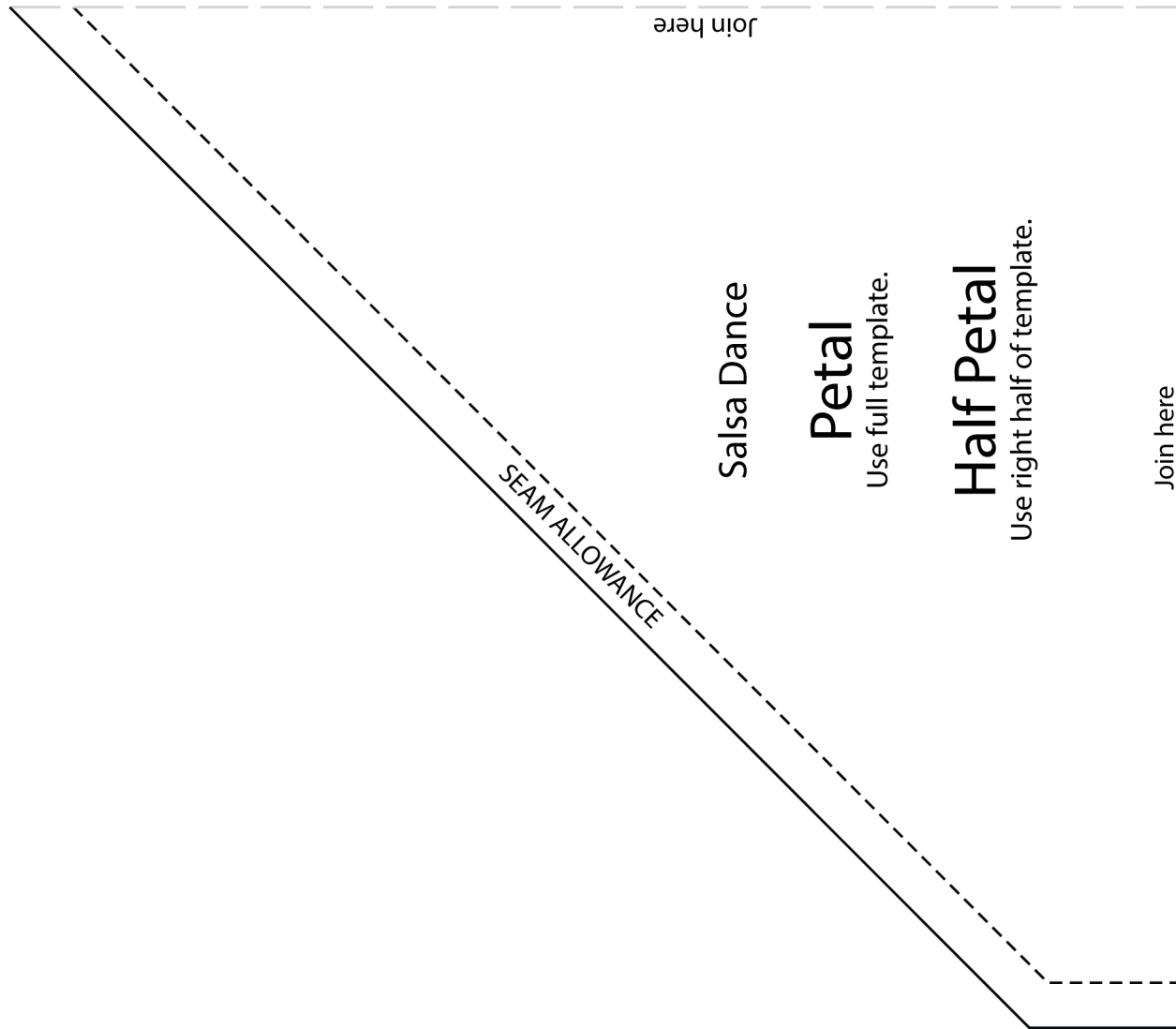
16. Sew a 4½" **Fabric E** square to each end of the remaining (2) Outer border strips. Sew the pieced Outer border strips to the top and bottom of the Quilt Center to complete the Quilt Top (82½" square).

Finishing

17. Sew together the 2½" **Fabric E** binding strips end-to-end using diagonal seams. Press seams open. Press the binding strip in half wrong sides together.
18. Layer backing (wrong side up), batting, and quilt top (right side up). Baste the layers together and quilt as desired. Trim excess batting and backing even with the top after quilting is completed.
19. Leaving an 8" tail of binding, sew the binding to the top of the quilt through all layers matching all raw edges. Miter corners. Stop approximately 12" from where you started. Lay both loose ends of binding flat along quilt edge. Where the loose ends meet, fold them back on themselves and press to form a crease. Using this crease as your stitching line, sew the two open ends of the binding right sides together. Trim seam to ¼" and press open. Finish sewing binding to quilt.
20. Turn the binding to the back of quilt and hand-stitch in place.

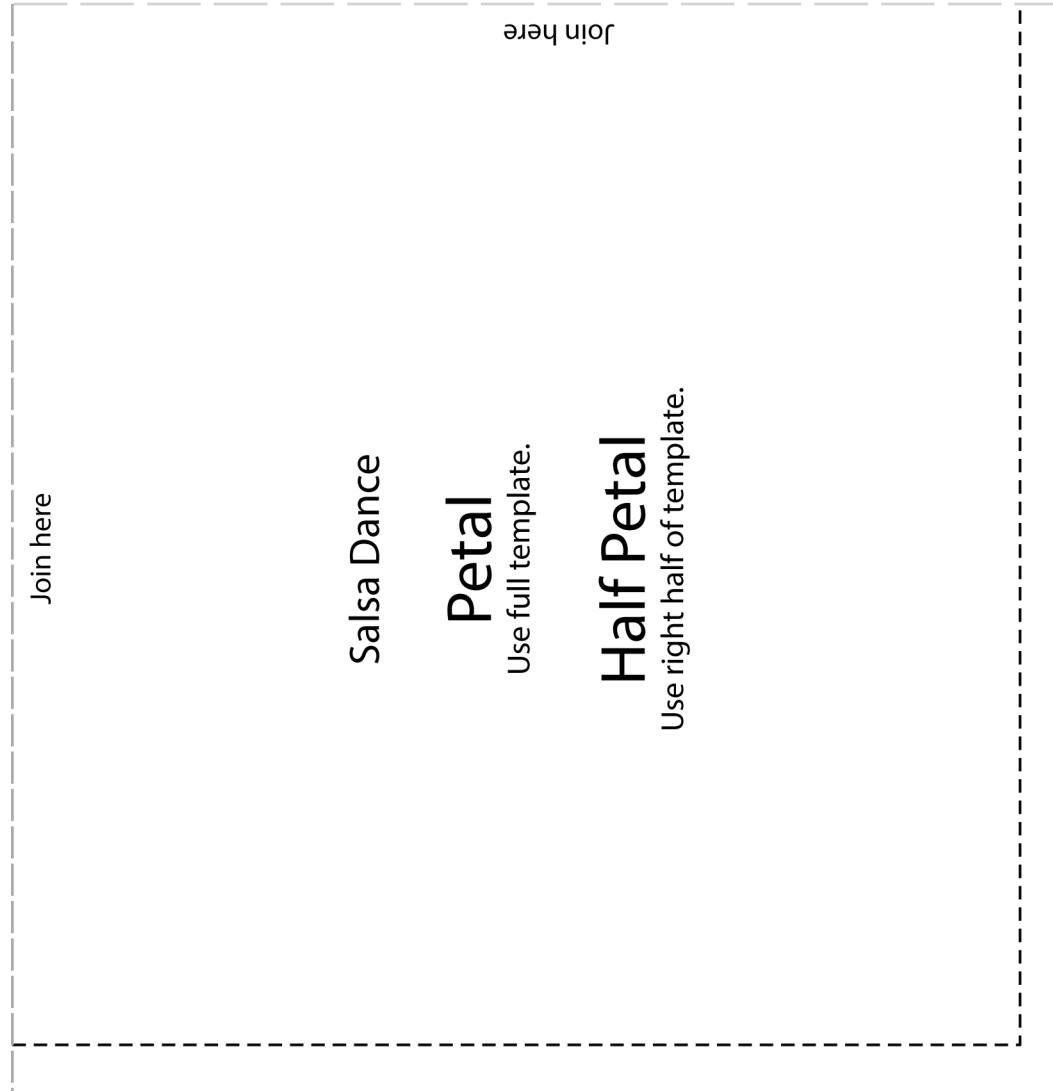
Quilt Layout





This square should measure 1" x 1" (2.54cm x 2.54cm) when printed.

***** Measure templates before cutting to confirm printing at 100%*****

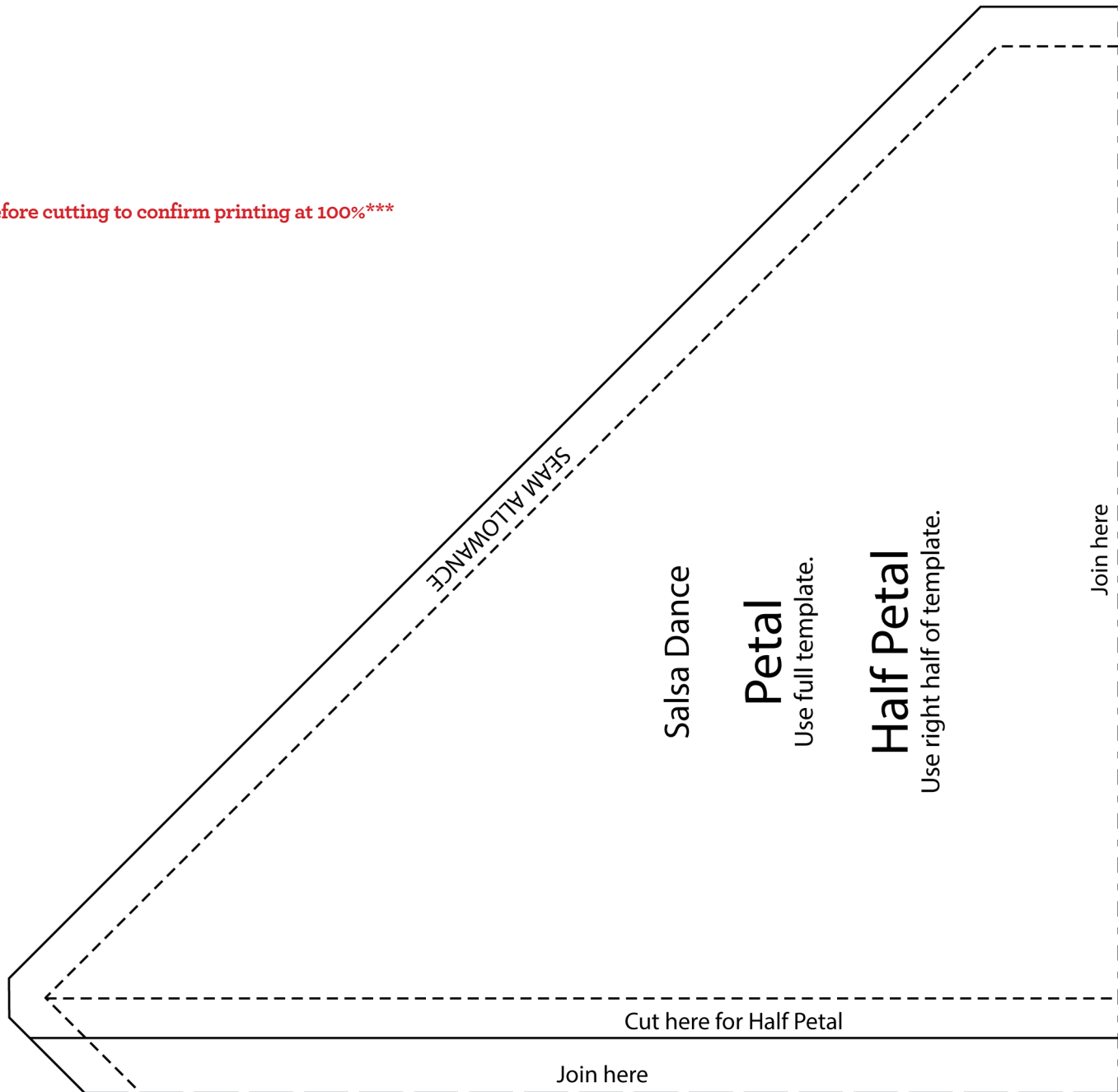


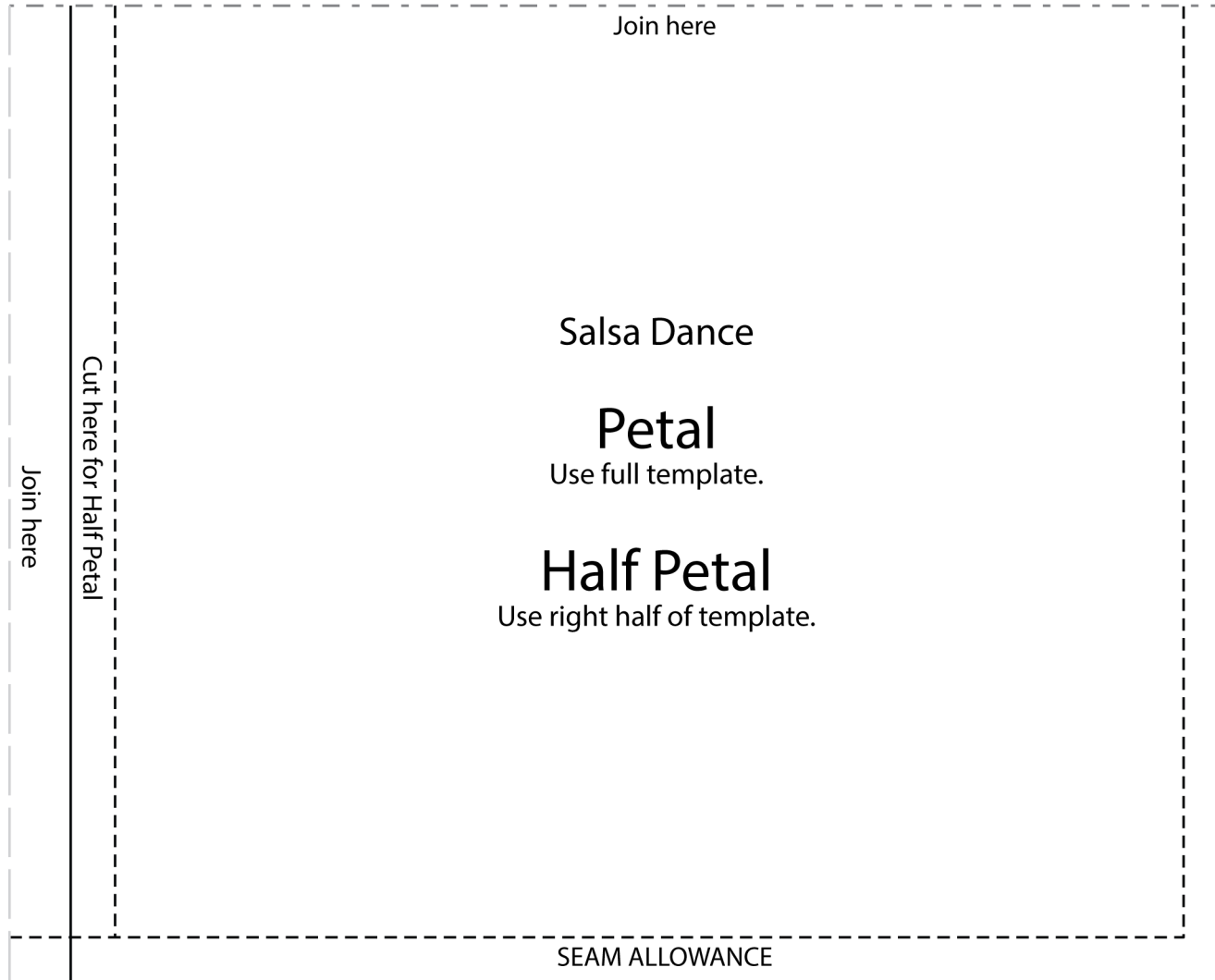
This square should measure 1" x 1" (2.54cm x 2.54cm) when printed.

***** Measure templates before cutting to confirm printing at 100%*****

This square should measure 1" x 1" (2.54cm x 2.54cm) when printed.

*** Measure templates before cutting to confirm printing at 100%***





This square should measure 1" x 1" (2.54cm x 2.54cm) when printed.

***** Measure templates before cutting to confirm printing at 100%*****