

## Supply Sheet for **BORDERS GALORE QUILT**

Approx. size: 68" x 68"

Taught by Winnie Fleming 713-303-2795

Bring the following to class:

Sewing machine and basic sewing supplies

Thread to match background fabric

Rotary cutter and mat

Long and short rulers (Omnigrd w/45 lines preferred)

4" or 6" square ruler

tape measure, calculator, pen and pencil

1  $\frac{1}{2}$ " Finished Half Square Triangle Papers on a Roll (2<sup>nd</sup> class)

Jan Krentz's  $\frac{1}{4}$ " corner marking tool

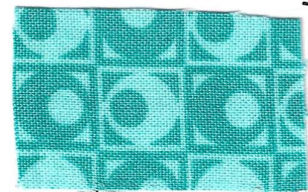
**FABRIC:** the sample used different **BLACKS** (approx. 4  $\frac{1}{2}$  yards total), different **WHITES** (approx. 4  $\frac{1}{2}$  yards total), and different **TEALS** (approx. 2  $\frac{1}{2}$  yards total). You can use one fabric for each **DARK**, **LIGHT**, and **ACCENT** or scrappy in the same color family.

Before class, place your fabric swatch over the fabric swatch used in the sample, make your 8" finished center star and pre-cut all pieces for **CLASS # 1**. Refer to the picture of the quilt to identify fabric letter and placement.

Pre-cutting information for CLASS # 1 (all strips are cut selvage to selvage)

	Center Star Fabric A (1/3 yd)	Cut 1 - 2 1/2" square Cut 8 - 1 1/2" squares Border - cut 4 - 1 1/4" strips (optional)
	Fabric B (1/8 yd)	Cut 1 - 2 1/2" strip, subcut 8 - 2 1/2" squares, 4 - 1 1/2" x 2 1/2" rectangles, and 4 - 1 1/2" squares
	Fabric C (1/8 yd)	Cut 1 - 2 1/2" strip, subcut 4 - 2 1/2" squares, and 4 - 2 1/2" x 4 1/2" rectangles
	Fabric D (1/8 yd)	Border stripe, cut 2 - 1 1/2" strips
	Fabric E (1/3 yd)	Dark setting triangles: cut 2 - 8" x 8" Squares, cut in half diagonally ☒
	First Pieced border Fabric F (3/4 yd)	Floater border (to be figured in class) Cut 1 - 3 3/8" strip, subcut 9 - 3 3/8" squares, cut in half diagonally from both directions for 36 triangles ☒
* Flying geese - Cut 4 - 2" strips, subcut 68 - 2" squares		
	Fabric G (1/4 yd)	Cut 2 - 2" strips, subcut 36 - 2" squares
	Fabric H (1/8 yd)	Cut 1 - 3 3/8" strip, subcut 11 - 3 3/8" Squares, cut in half diagonally from both Directions for 44 triangles ☒
	Fabric I (1/2 yd)	Floater Border (to be figured in class)
	Fabric J (1/3 yd)	Flying geese - cut 3 - 2" strips, subcut 32 - 2" x 3 1/2" rectangles
	Fabric K (2/3 yd)	Floater Border (to be figured in class)

Pre-cutting information for CLASS # 2 (all strips are from selvage to selvage)



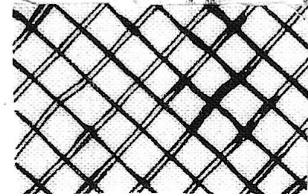
Fabric M (3/4yd)

Pinwheels - pair with N and make 144 - 1 1/2" finished HSTs (I'll demo using HST papers on a roll at the end of the 1<sup>st</sup> class)



Fabric N (3/4 yd)

HSTs pair with M



Fabric O (3/8 yd)

Cut 2 - 5 1/2" strips, subcut 8 - 5 1/2" squares cut in half diagonally twice ☒ , and subcut 2 - 3" x 3" squares, cut in half diagonally ☐



Fabric P (2 1/4 yds)

Cut 2 - 5 1/2" strips, subcut 8 - 5 1/2" squares Cut in half diagonally twice ☒ , and Subcut 6 - 3" squares , cut in half Diagonally ☐

Floater Border (to be figured in class)

Zig Zag: Cut 2 - 1 3/4" strips

Cut 2 - 3" strips

Cut 2 - 4 1/4" strip

Cut 1 - 5 1/2" strip



Fabric Q (1/2 yd)

Cut 8 - 1 3/4" strips



Fabric R (2 yards)

Zig Zag: Cut 2 - 1 3/4" strips

Cut 2 - 3" strips

Cut 2 - 4 1/4" strips

Cut 1 - 5 1/2" strip

Outer border - cut 8 - 4 1/2" strips

# Borders Galore Quilt Center Star Instructions

Make 1 - 8" finished (8 1/2" unfinished) block BEFORE class.

## 1. Cut the following:

Fabric A - cut 1 - 2 1/2" x 2 1/2" square

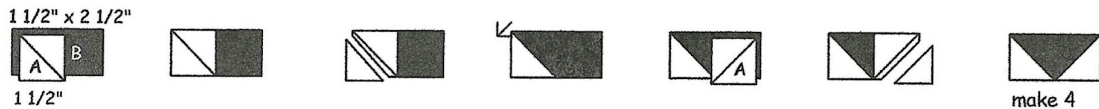
cut 1 - 1 1/2" strip, subcut 8 - 1 1/2" squares

Fabric B - cut 1 - 2 1/2" strip, subcut 8 - 2 1/2" squares, 4 - 1 1/2" x 2 1/2" rectangles and 4 - 1 1/2" x 1 1/2" squares

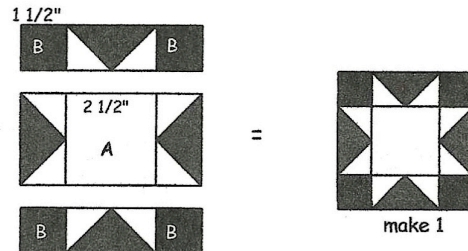
Fabric C - cut 1 - 2 1/2" strip, subcut 4 - 2 1/2" squares and 4 - 2 1/2" x 4 1/2" rectangles

## 2. Piecing Order:

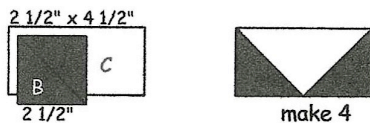
Make 1 - 4" finished (4 1/2" unf.) center variable star. First, draw a diagonal line on the backside of 8 A 1 1/2" squares. Place an A square over one corner of B 1 1/2" x 2 1/2" rectangles, right sides together and match raw edges. Stitch ON the diagonal line. Trim 1/4" from seam and press outward toward small triangles. Make 4. Repeat by placing another A 1 1/2" square over the opposite corner of B (pay attention to the direction of the diagonal line according to the drawing). Stitch ON the line, trim 1/4" from seam and press outward. Make 4.



Sew block together by rows according to the diagram:



Next, draw a diagonal line on the backside of 8 B 2 1/2" squares. Place a B 2 1/2" square over one corner of C 2 1/2" x 4 1/2", right sides together and match raw edges. Repeat same sew 'n flip technique and make 4 large star tip units.



Then make 1 - 8" finished (8 1/2" unf.) center star by sewing rows together according to the diagram.

