

Lil Miss Cutie Patootie Dress pattern corrections 2016

Copyright 2016 Desiree's Designs



Following are the corrected templates and pocket instructions for the Lil Miss Cutie Patootie doll in the book Gumdrops and Lollipops.

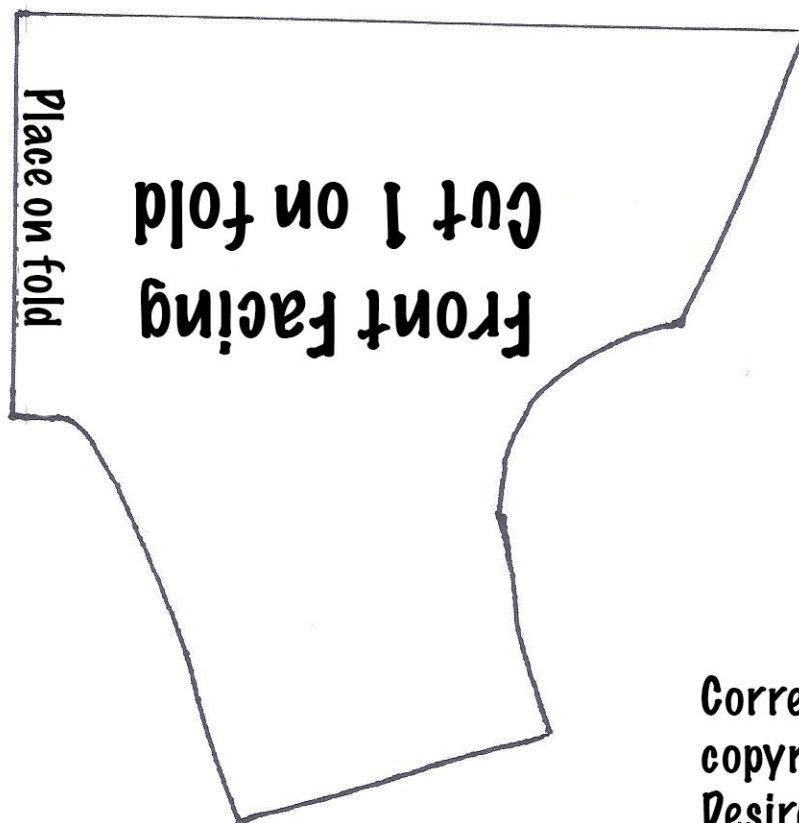
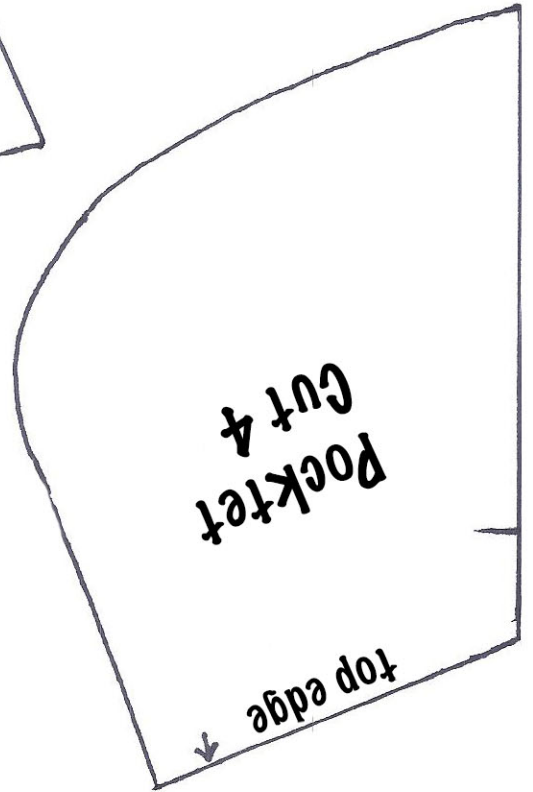
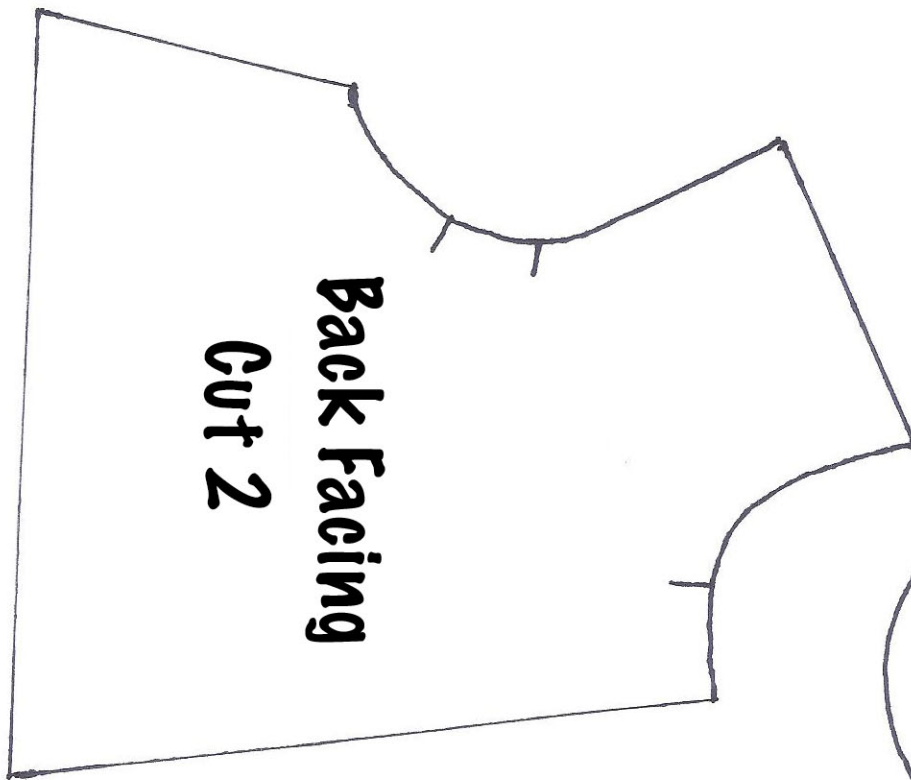
Pocket

Take 2 pocket pieces and place them right sides together. Sew a $\frac{1}{4}$ " from the edge leaving notched edge open. Trim and clip curves. Turn right side out and press keeping the open edge aligned. If desired sew lace trim across the top edge. Repeat for second pocket. * be sure to turn pocket over for second side before adding trim.

Align pockets on dress front matching notches. Pin pockets in place making sure the side of dress and open edge of pocket are aligned. Machine baste in place.

Sew close to the edge of the curved side of pocket leaving the top edge open. Back-stitch the top edge of pocket.

Continue with Dress assembly



Corrected Pattern
copyright 2016
Desiree's Designs

Dress Back
Cut 2

Corrected pattern
Copyright 2016
Desiree's Designs

Lil Miss Cutie Patootie
Pattern Corrections
Copyright 2016
Desiree's Designs

Dress Front
Cut 1 on fold


Pocket
Placement

Place on fold

