

Sugar Shaker

Finished quilt size: 13½" x 27½"



1504-99
charm square



1505-88
charm square



1506-88
charm square



1507-77
charm square



1508-77
charm square



1509-66
charm square



1510-88
charm square



1511-93
charm square



1512-55
charm square



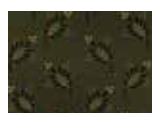
1513-22
charm square



1514-66
charm square



1515-66
charm square



1516-66
charm square



1517-33
charm square



1518-66
charm square



1519-404
charm square



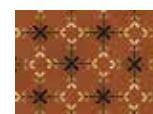
1520-404
charm square



1521-11
charm square



1521-22
charm square



1522-30
charm square



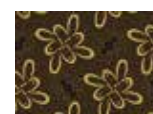
1523-30
charm square



1524-30
charm square



1525-55
charm square



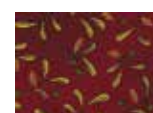
1526-33
charm square



1527-33
charm square



1528-88
charm square



1529-88
charm square



1530-40
fat quarter



1531-40
fat quarter



1532-40
fat quarter

PROJECT NOTES

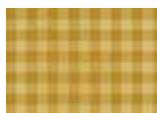
This Simple Whatnots Club 14 quilt features prints from Kim's Scrap Basket Favorites collection for Henry Glass Fabrics.

MATERIALS

Yardages are based on a 42" width of useable fabric after prewashing and removing selvages.

Pre-cut sizes are as follows:

Fat Quarters – 18" x 21"; Fat Eighths – 9" x 21"; Skinny Sixteenths – 4½" x 21"; Chubby Sixteenths – 9" x 10½"; Bitty Bricks – 4½" x 10½"; Charm Squares – 5" x 5"



1500-44
charm square



1501-77
fat eighth



1502-77
charm square



1503-77
½ yard

In addition to the itemized fabrics, you'll need:

- 1 rectangle of batting, 18" x 32"
- ½ yard of backing fabric
- Standard sewing and quilting supplies

CUTTING

Cut all pieces across the width of the fabric in the order given unless otherwise noted. WOF is defined as width of fabric.

From each of the 29 charm squares of assorted prints, cut:

2 rectangles, $1\frac{1}{2}$ " x 5"; from *each* rectangle, cut:

- 1 square, $1\frac{1}{2}$ " x $1\frac{1}{2}$ " (combined total of 58)
- 1 rectangle, $1\frac{1}{2}$ " x 2" (combined total of 58)

1 additional rectangle, $1\frac{1}{2}$ " x 5; crosscut into 1 rectangle, $1\frac{1}{2}$ " x 2" (combined total of 29, grand total of 87 with previously cut rectangles)

Organize the $1\frac{1}{2}$ " assorted-print squares into a four-patch patchwork set. Organize the assorted-print $1\frac{1}{2}$ " x 2" rectangles into a star-point patchwork set.

From the $\frac{1}{2}$ yard of navy twilight sky print (1503-77), cut:

2 strips, 1" x WOF; crosscut into 32 rectangles, 1" x $2\frac{1}{2}$ "

2 strips, $1\frac{1}{2}$ " x WOF; crosscut into 32 squares, $1\frac{1}{2}$ " x $1\frac{1}{2}$ "

3 binding strips, $2\frac{1}{2}$ " x WOF (For Kim's chubby binding method outlined in each of her "Simple" books, reduce the strip width to 2".)

From the fat eighth of blue cabbage rose print (1501-77), cut:

3 strips, $1\frac{1}{2}$ " x WOF; crosscut into 35 squares, $1\frac{1}{2}$ " x $1\frac{1}{2}$ "

From each of the 3 fat quarters of wheat prints, cut:

2 strips, $1\frac{1}{2}$ " x WOF; crosscut into 22 squares, $1\frac{1}{2}$ " x $1\frac{1}{2}$ " (combined total of 66 squares)

2 strips, $2\frac{1}{2}$ " x WOF; crosscut into 11 squares, $2\frac{1}{2}$ " x $2\frac{1}{2}$ " (combined total of 33 squares)

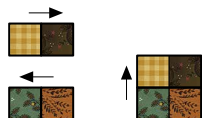
2 additional strips, $1\frac{1}{2}$ " x WOF; crosscut into 4 rectangles, $1\frac{1}{2}$ " x $6\frac{1}{2}$ " (combined total of 12)

Keep the wheat patchwork pieces organized by size.

PIECING THE SUGAR SHAKER BLOCKS

Sew all pieces with right sides together using a $\frac{1}{4}$ " seam allowance unless otherwise noted. Press the seam allowances as indicated by the arrows or otherwise directed.

- ① Select the four-patch patchwork set. Choosing the prints randomly, lay out four assorted-print $1\frac{1}{2}$ " squares in two horizontal rows. Join the squares in each row. Press. Join the rows. Press. Repeat to piece a total of eight four-patch units measuring $2\frac{1}{2}$ " square, including the seam allowances. Please note that you'll have unused assorted-print squares, these have been included for added choices as you stitch the patchwork.



Make 8
four-patch units,
 $2\frac{1}{2}$ " x $2\frac{1}{2}$ ".

- ② Select the wheat $1\frac{1}{2}$ " squares. Use a pencil and an acrylic ruler to draw a diagonal sewing line from corner to corner on the wrong side of each wheat square.

- ③ Choose the star-point patchwork set. From this patchwork set, select a $1\frac{1}{2}$ " x 2" rectangle. Layer a prepared wheat $1\frac{1}{2}$ " square onto one end of the rectangle as shown. Join the pieces along the drawn diagonal line. Fold the resulting inner wheat triangle open, aligning the corner with the corner of the rectangles. Press. Trim away the layers beneath the top triangle, leaving a $\frac{1}{4}$ " seam allowance.



Make 32
pieced rectangles,
 $1\frac{1}{2}$ " x 2".

- Repeat to make a total of 32 pieced rectangles measuring $1\frac{1}{2}$ " x 2", including the seam allowances.

- ④ Repeat step 3 to make a total of 32 pieced mirror-image rectangles measuring $1\frac{1}{2}$ " x $2\frac{1}{2}$ ", including the seam allowances. Please note that you'll have unused wheat and assorted-print rectangles, these have been included for added choices as you stitch the patchwork.



Make 32
pieced mirror-image
rectangles,
 $1\frac{1}{2}$ " x 2".

Note: For added versatility as you piece the star-point units in step 5, you may wish to stitch a handful of extra pieced rectangles and mirror-image

- ⑤ Choosing prints that compliment each other, lay out a pieced rectangle from step 3 and a pieced mirror-image rectangle from step 4 as shown. Join the rectangles. Press the seam allowances to one side, in the direction that produces the best inner wheat point. Repeat to piece a total of 32 pieced rectangle pairs measuring 2" x $2\frac{1}{2}$ ", including the seam allowances.



Make 32
pieced rectangle pairs,
2" x $2\frac{1}{2}$ ".

- ⑥ Join a 1" x $2\frac{1}{2}$ " navy rectangle to a pieced rectangle pair as shown. Press. Repeat to piece a total of 32 star-point units measuring $2\frac{1}{2}$ " square, including the seam allowances.



Make 32
star-point units,
 $2\frac{1}{2}$ " x $2\frac{1}{2}$ ".

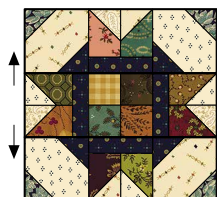
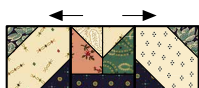
- ⑦ Select the navy and the blue cabbage rose $1\frac{1}{2}$ " squares. Draw a diagonal sewing line on the wrong side of each square as previously instructed.

- 8 Choose the wheat $2\frac{1}{2}$ " squares. Layer a prepared navy and blue cabbage rose $1\frac{1}{2}$ " square onto two opposite corners of the wheat square as shown. Stitch, press, and trim as previously instructed to form triangle corners. Repeat to piece a total of 32 corner units measuring $2\frac{1}{2}$ " square, including the seam allowances. Please note you'll have a small handful of unused wheat squares.



Make 32
corner units,
 $2\frac{1}{2}$ " x $2\frac{1}{2}$ ".

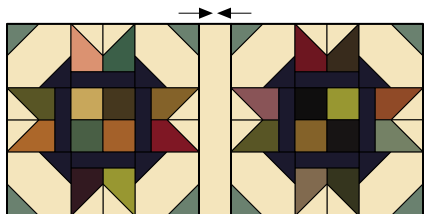
- 9 Lay out one four-patch unit from step 1, four star-point units from step 6, and four corner units from step 8 in three horizontal rows as shown. Join the pieces in each row. Press. Join the rows. Press. Repeat to piece a total of eight Sugar Shaker blocks measuring $6\frac{1}{2}$ " square, including the seam allowances.



Make 8
Sugar Shaker blocks,
 $6\frac{1}{2}$ " x $6\frac{1}{2}$ ".

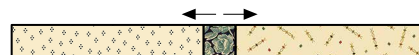
PIECING THE TABLE RUNNER

- 1 Select the $1\frac{1}{2}$ " x $6\frac{1}{2}$ " rectangles cut from the three wheat prints. Join a pieced Sugar Shaker block to each long edge of a wheat rectangle. Press. Repeat to piece four double-block units measuring $6\frac{1}{2}$ " x $13\frac{1}{2}$ ", including the seam allowances.



Make 4 double-block units,
 $6\frac{1}{2}$ " x $13\frac{1}{2}$ ".

- 2 Choosing the prints randomly, select two wheat $1\frac{1}{2}$ " x $6\frac{1}{2}$ " rectangles. Join each rectangle to an opposite side of a blue cabbage rose $1\frac{1}{2}$ " square. Press. Repeat to piece a total of three sashing units measuring $1\frac{1}{2}$ " x $13\frac{1}{2}$ ", including the seam allowances. Please note you'll have a small handful of unused wheat rectangles.



Make 3 sashing units,
 $1\frac{1}{2}$ " x $13\frac{1}{2}$ ".

- 3 Referring to the quilt pictured on the handout cover, lay out the four double-block units from step 1 and the three sashing units from step 2 in alternate rows. Join the rows. Press. The pieced quilt top should measure $13\frac{1}{2}$ " x $27\frac{1}{2}$ ", including the seam allowances.

COMPLETING THE QUILT

Layer and baste the quilt top, batting, and backing. Quilt the layers. Join the navy binding strips to make one length and use it to bind the quilt.



©2024 Kim Diehl

Every effort has been made to ensure that all projects are error free. All the information is presented in good faith, however no warranty can be given nor results guaranteed as we have no control over the execution of instructions. Therefore, we assume no responsibility for the use of this information or damages that may occur as a result. When errors are brought to our attention, we make every effort to correct and post a revision as soon as possible. Please make sure to check www.henryglassfabrics.com for pattern updates prior to starting the project. We also recommend that you test the project prior to cutting for kits. Finally, all free projects are intended to remain free to you and are not for resale or other forms of distribution.