

HALLOWEEN FIGS: THE DENIM VERSION

A 12 Month Block of the Month Quilt



66" X 72"



FIG TREE & CO.
by Joanna Figueroa

Halloween Figs Block-of-the-Month Fabric Information

We are happy to welcome you to one of our iconic BLOCK OF THE MONTH adventures, HALLOWEEN FIGS SAMPLER. This program was originally created to accompany one of our most popular fabric collections for MODA fabrics, ALL HALLOW'S EVE. We have now recolored it with our brand new DENIM & DAISIES collection for a stunning blue and orange sampler.

The specific SKU numbers that we have used for this DENIM & DAISIES version are provided here below as well as swatch images on the FABRIC KEY on the following page. In our programs, we generally "allocate" the full amount of each fabric at once so that it only has to be cut and distributed once. Sometimes we do split up fabrics into smaller cuts throughout the program to better balance the fabrics received each month. Please look through the original pattern and make notes of the places where these new DENIM VERSION cuts vary from the original notes in the pattern to avoid confusion.

The following original fabrics were originally split into (2) cuts & are now (1) cut: CREAM WITH BLACK CIRCLES [now IVORY W/ NAVY EYELET], BLACK FLORAL [now NAVY FLORAL]

Also pay close attention to the (8) fabrics that have now been combined into (4) for this DENIM version [all noted below on the overall fabric name list].

It is important that you make these needed notes & follow the info provided to successfully transition this pattern over to be used with DENIM & DAISIES.

SUMMARY OF FABRICS ALLOCATED THROUGHOUT THE BOM PROGRAM

ORANGE/CARAMEL/TANGERINE FABRICS: ORANGE LEAVES 35385-14, CARAMEL LEAVES 35385-15, ORANGE BERRIES 35386-14 and TANGERINE EYELET 20488-102

BLUE FABRICS: NAVY EYELET 20488-108, NAVY FLORAL 35380-18, NAVY ROSES 35382-18, NAVY MUMS 35384-18, BLUE TRELLIS 35383-17, BLUE PAISLEY 35387-17, SKY BLUE MUMS 35384-16 and SKY BLUE BERRIES 35386-16

CREAM FABRICS: IVORY W/ NAVY EYELET 20488-110, IVORY WITH TAN EYELET 20488-84, IVORY W/ ORANGE + BLACK EYELET 20488-87, WHITE ON WHITE EYELET 20488-11, CREAM PAISLEY 35387-21, IVORY FLORAL 35380-28 and IVORY SOLID- #9900-60.

FULL LIST OF FABRIC NAMES USED & THE ORIGINAL FABRIC NAMES USED IN PATTERN

NOTE: We recommend going through the pattern and noting the fabric name changes at the start of the program to avoid any confusion later on. It is also IMPORTANT that you pay close attention to the individual BLOCK CHANGES noted on the last page. Fabrics listed in order of use.

NAVY EYELET: originally both BLACK WITH CIRCLES and BLACK SOLID

SKY BLUE BERRIES: originally ORANGE DITSY

IVORY SOLID: originally IVORY SOLID [same]

IVORY W/ NAVY EYELET: originally CREAM WITH BLACK CIRCLES

ORANGE BERRIES: originally ORANGE ZIGZAG

BLUE PAISLEY: originally both GREY DITSY and BLACK ZIGZAG

NAVY FLORAL: originally both BLACK FLORAL and BLACK HOUNDSTOOTH

IVORY W/ TAN EYELET: originally CREAM WITH GREY CIRCLES

ORANGE LEAVES: originally ORANGE WITH CIRCLES

IVORY W/ ORANGE + BLACK EYELET: originally CREAM WITH ORANGE CIRCLES

BLUE TRELLIS: originally both GREY WITH CIRCLES and GREY SWIRLS

WHITE ON WHITE EYELET: originally WHITE HOUNDSTOOTH

BLUE ROSES: originally GREY FLORAL

CREAM PAISLEY: originally CREAM DITSY

TANGERINE EYELET: Fabric addition to be used as noted and as you like as a sub.

SKY BLUE MUMS: originally ORANGE FLORAL

NAVY MUMS: Fabric addition to be used as noted and as you like as a sub.

CARAMEL LEAVES: originally ORANGE PUMPKIN SEEDS

IVORY FLORAL: originally CREAM FLORAL

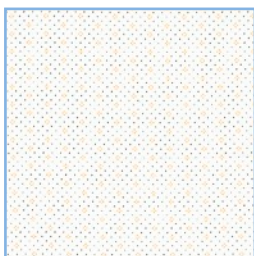
DENIM & DAISIES SWATCH FABRIC KEY FOR HALLOWEEN FIGS SAMPLER



WHITE ON WHITE
EYELET



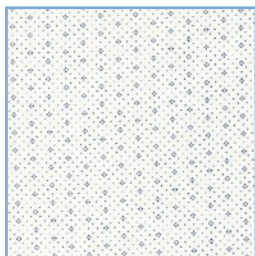
IVORY W/ TAN
EYELET



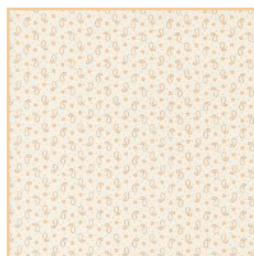
IVORY W/ ORANGE
+ BLACK EYELET



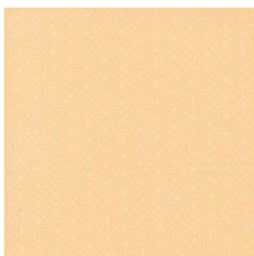
IVORY FLORAL



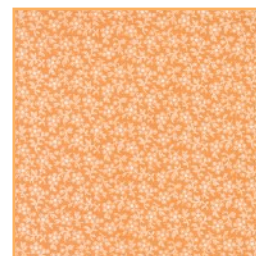
IVORY W/ NAVY
EYELET



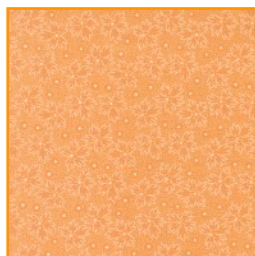
CREAM PAISLEY



TANGERINE EYELET



ORANGE BERRIES



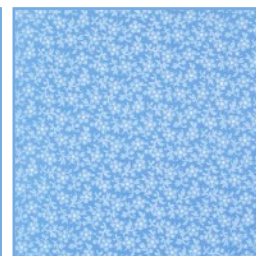
ORANGE LEAVES



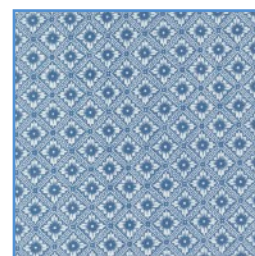
CARAMEL LEAVES



SKY BLUE MUMS



SKY BLUE BERRIES



BLUE TRELLIS



BLUE PAISLEY



NAVY MUMS



NAVY ROSES



NAVY FLORAL



NAVY EYELET

+IVORY SOLID

IF SPLITTING FABRICS INTO MONTHLY SHIPMENTS, FOLLOW THESE GUIDELINES:

MONTH #1: NAVY EYELET [$\frac{1}{2}$ yd.***], SKY BLUE BERRIES [$\frac{1}{2}$ yd.], IVORY W/ NAVY EYELET [$\frac{1}{2}$ yd.***] and IVORY SOLID [$\frac{1}{2}$ yd. -more later],

MONTH #2: ORANGE BERRIES [$\frac{1}{2}$ yd.], BLUE PAISLEY [$\frac{1}{2}$ yd.] and NAVY FLORAL [$\frac{1}{2}$ yd.***].

MONTH #3: IVORY W/ TAN EYELET [$\frac{1}{2}$ yd.] and ORANGE LEAVES [$\frac{1}{2}$ yd.].

MONTH #4: IVORY W/ ORANGE + BLACK EYELET [$\frac{1}{2}$ yd.] and IVORY SOLID [$\frac{1}{2}$ yd. repeat]

MONTH #5: BLUE TRELLIS [$\frac{1}{2}$ yd.] and WHITE ON WHITE EYELET [$\frac{1}{2}$ yd.].

MONTH #6: BLUE ROSES [$\frac{1}{2}$ yd.], CREAM PAISLEY [$\frac{1}{2}$ yd.] and IVORY SOLID [$\frac{1}{2}$ yd. repeat].

MONTH #7: TANGERINE EYELET [$\frac{1}{2}$ yd.]

MONTH #8: SKY BLUE MUMS [$\frac{1}{2}$ yd.] and NAVY MUMS [$\frac{1}{2}$ yd.]

MONTH #9: CARAMEL LEAVES [$\frac{1}{2}$ yd.] and IVORY SOLID [$\frac{1}{2}$ yd. final repeat].

MONTH #10: IVORY W/ ORANGE + BLACK EYELET [$\frac{3}{8}$ yd. border] and BLUE PAISLEY [$\frac{3}{8}$ yd. border].

MONTH #11: IVORY FLORAL [1 yd. border] and SKY BLUE MUMS [$\frac{3}{8}$ yd. border].

MONTH #12: SKY BLUE BERRIES [$\frac{3}{8}$ yd. border] and NAVY EYELET [$\frac{7}{8}$ yd. border & $\frac{5}{8}$ yd binding].

*** fabrics with an asterisk were originally divided up between two cuts/shipments in the original HALLOWEEN FIGS pattern but have been combined into a single $\frac{1}{2}$ yd. cut for this program. Please make a note in your notes/directions to avoid confusion given monthly notes in the directions about fabric. As an alternative, inform customers to ignore monthly pattern notes about fabric delivery and create your own fabric schedule.

IMPORTANT COLOR PLACEMENT CHANGES

Below is a small list of instances when the fabric transfer from “original fabric” to new DENIM & DAISIES fabric version was not a clean one-to-one change. There were a few instances where the new fabric pairings needed to be changed up a bit for a successful color combination.

MONTH #6: Instead of NAVY EYELET [orig. black circles], use SKY BLUE BERRIES for [e].

MONTH #7: This month you are receiving TANGERINE EYELET as an additional fabric. Instead of BLUE TRELLIS [orig. grey swirls in this instance], use TANGERINE EYELET for [d].

MONTH #8: Instead of NAVY EYELET [orig. black circles], use BLUE PAISLEY for center square [b]. This month you are also receiving NAVY MUMS as an additional fabric for FLYING GEESE FILLERS, PUMPKIN SEEDS and elsewhere as desired. Also use cover photo as a guide.

MONTH #10: We have added TANGERINE EYELET into some FLYING GEESE FILLER blocks on pgs. 24-25. Use cover photo as a guide. Note that if you are running low on NAVY EYELET or NAVY FLORAL, you have several other fabrics to choose from for these filler blocks instead.

MONTH #11: Just as with the FLYING GEESE FILLER BLOCKS, we have changed up some of the PUMPKIN SEED blocks on p.26. Use cover photo as a guide.

For both FLYING GEESE FILLERS and PUMPKIN SEED blocks, please use the fabrics you prefer -or- have the most remaining. The filler blocks are meant to be made as “quilters choice”.