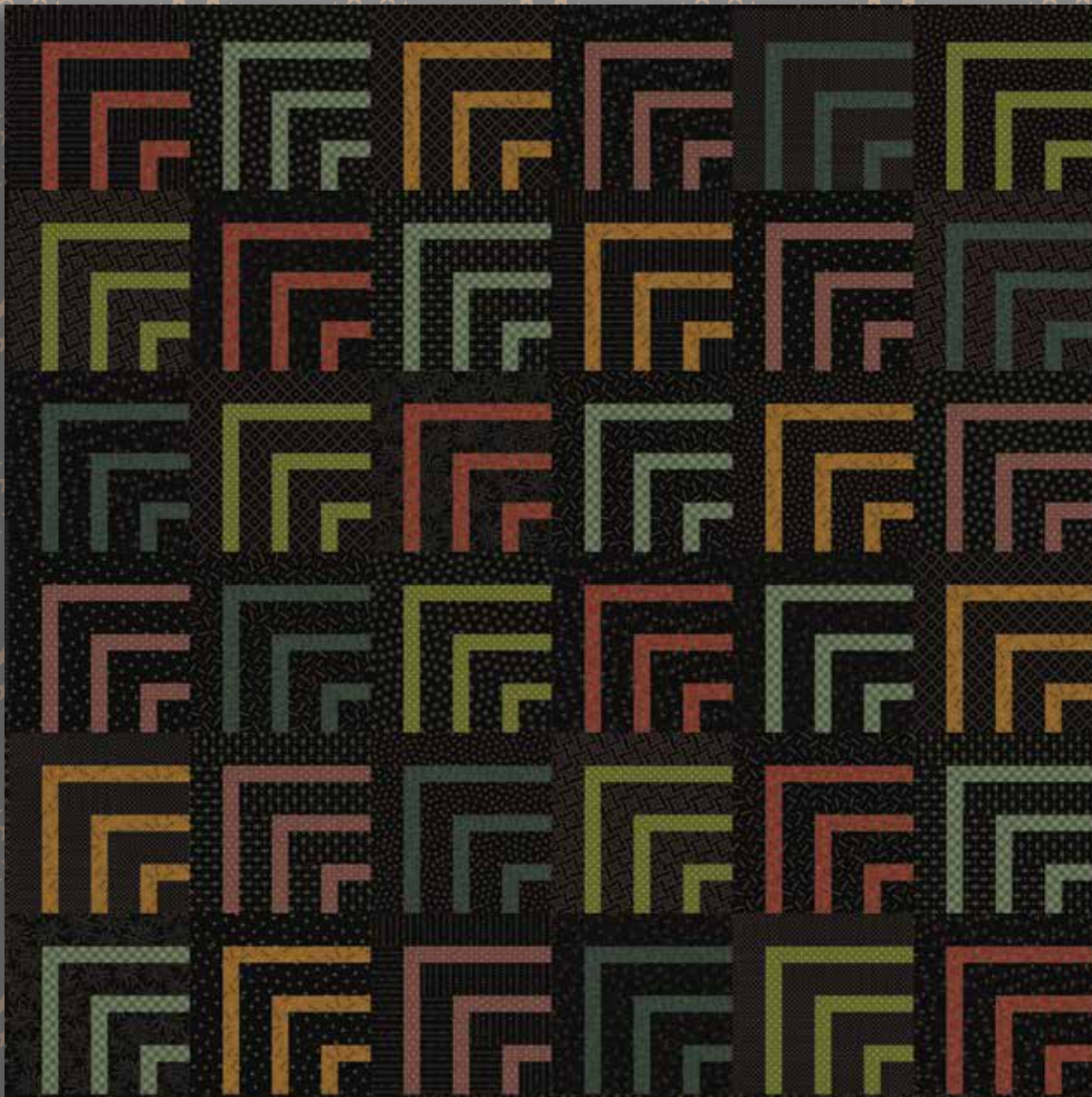


Ebony & Onyx Patchwork Quilt

by Kim Diehl



Finished Quilt Size: 66½" x 66½"
A Free Project Sheet from

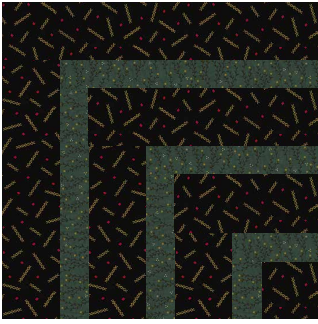


Henry Glass & Co., Inc.



49 West 37th Street, New York, NY 10018
tel: 212-686-5194 • fax: 212-532-3525
Toll-free: 800-294-9495
www.henryglassfabrics.com

facebook



Ebony & Onyx Patchwork Quilt

Finished quilt size: 66½" x 66½"

PROJECT NOTES

This easy-to-stitch quilt features a variety of "little black prints" from Kim's Ebony & Onyx Basics collection, paired with additional jewel-toned prints from her Farmstead Harvest line to complete the patchwork design.

MATERIALS

Yardages are based on a 42" width of useable fabric after prewashing and removing selvages.

½ yard *each* of 12 assorted black prints for blocks and binding (6986-99; 6987-99; 6988-99; 6989-99; 6990-99; 6991-99; 6992-99; 6993-99; 6994-99; 6995-99; 6996-99; 6997-99)

6 fat quarters (18" x 21") of assorted jewel-toned prints for blocks (Kim chose the following Farmstead Harvest prints: orange 6935-30; green 6936-66; pink 6939-22; lavender 6944-55; teal 6945-77; and aqua 6946-11)

4½ yards fabric of choice for backing (Kim suggests black starburst floral 6991-99)

73" square of batting

Standard sewing and quilting supplies

CUTTING

Cut all pieces across the width of the fabric in the order given unless otherwise noted. To ensure the fat quarters of assorted jewel-toned prints yield the needed pieces, please use the illustration as a guide when cutting.

From each of the 12 assorted black prints, cut:

3 rectangles, 2½" x 11½" (total of 36)

3 rectangles, 2½" x 9½" (total of 36)

3 rectangles, 2½" x 8½" (total of 36)

3 rectangles, 2½" x 6½" (total of 36)

3 rectangles, 2½" x 5½" (total of 36)

3 rectangles, 2½" x 3½" (total of 36)

3 squares, 2½" x 2½" (total of 36)

Keep the pieces organized by print, grouping them into sets consisting of one piece from each size cut.

Enough 2½"-wide rectangles in random lengths to make a 276" length of binding when joined together end to end.

From each of the 6 assorted jewel-toned print fat quarters, cut:

6 rectangles, 1½" x 9½" (total of 36)

6 rectangles, 1½" x 8½" (total of 36)

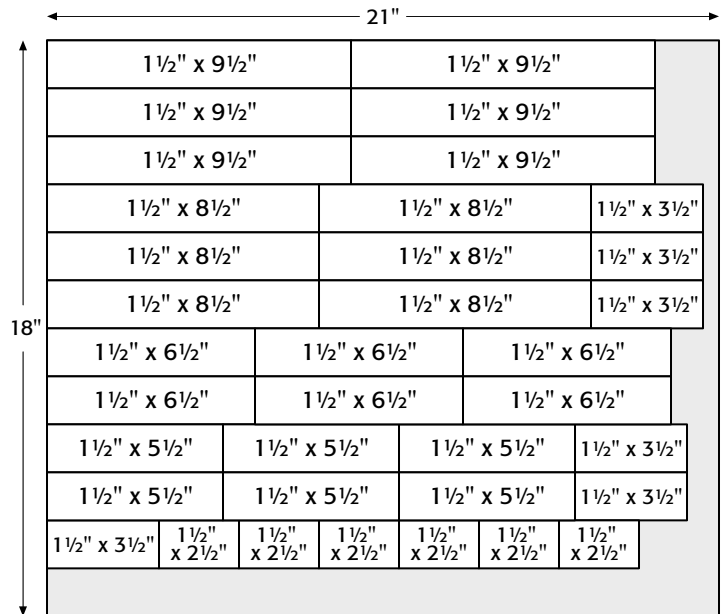
6 rectangles, 1½" x 6½" (total of 36)

6 rectangles, 1½" x 5½" (total of 36)

6 rectangles, 1½" x 3½" (total of 36)

6 rectangles, 1½" x 2½" (total of 36)

Keep the pieces organized by print, grouping them into sets consisting of one piece from each size cut.

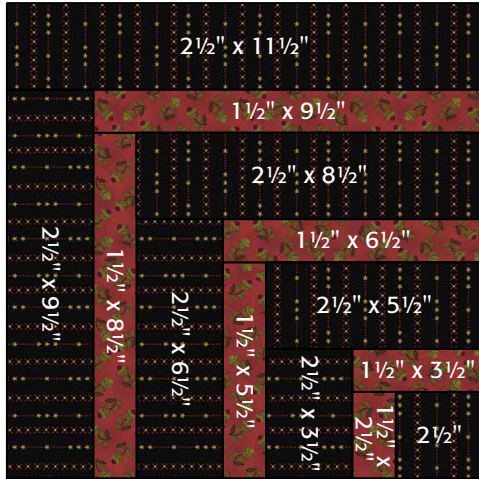


Cut the pieces shown from each assorted jewel-toned print fat quarter.

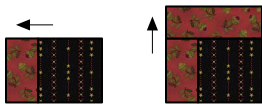
PIECING THE BLOCKS

Sew all pieces with right sides together and a $\frac{1}{4}$ " seam allowance unless otherwise noted. Press the seam allowances as indicated by the arrows or otherwise directed.

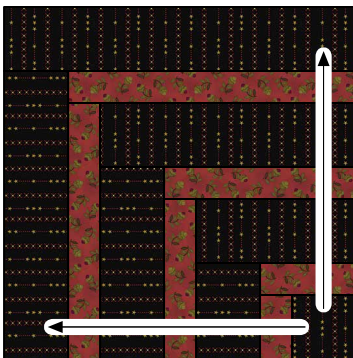
- 1 Select a set of pieces cut from one black print and a set of pieces cut from one jewel-toned print. Referring to the illustration, lay out the black and jewel-toned pieces to form the block.



- 2 Join the jewel-toned $1\frac{1}{2}$ " x $2\frac{1}{2}$ " rectangle to the black $2\frac{1}{2}$ " square as shown. Press. Using the illustration as a guide, join the jewel-toned $1\frac{1}{2}$ " x $3\frac{1}{2}$ " rectangle to the adjacent side of the black square. Press.



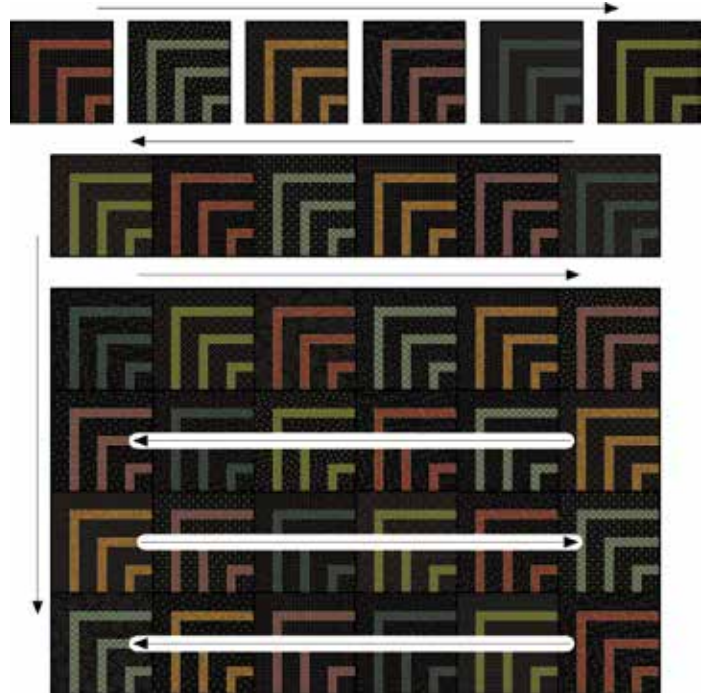
- 3 Working outward from the black corner square, continue stitching and pressing rectangles to the patchwork unit as shown. The pieced block should measure $11\frac{1}{2}$ " square, including the seam allowances.



- 4 Repeat steps 1–3 for a total of 36 pieced blocks.

PIECING THE QUILT TOP

- 1 Referring to the pictured quilt for placement of the jewel-toned colors, lay out the pieced blocks in six rows of six blocks.
- 2 Join the blocks in each horizontal row. Press. Join the rows. Press. The completed quilt top should measure $66\frac{1}{2}$ " square, including the seam allowances.



COMPLETING THE QUILT

Layer and baste the quilt top, batting, and backing. Quilt the layers. Join the assorted black print $2\frac{1}{2}$ "-wide random-length rectangles to make a pieced strip and use it to bind the quilt.

Every effort has been made to ensure that all projects are error free. All the information is presented in good faith, however no warranty can be given nor results guaranteed as we have no control over the execution of instructions. Therefore, we assume no responsibility for the use of this information or damages that may occur as a result. When errors are brought to our attention, we make every effort to correct and post a revision as soon as possible. Please make sure to check www.henryglassfabrics.com for pattern updates prior to starting the project. We also recommend that you test the project prior to cutting for kits. Finally, all free projects are intended to remain free to you and are not for resale.

Ebony & Onyx Basics

Fabrics in the Collection



6986-99



6987-99



6988-99



6989-99



6990-99



6991-99



6992-99



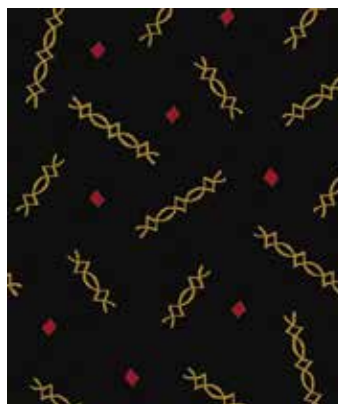
6993-99



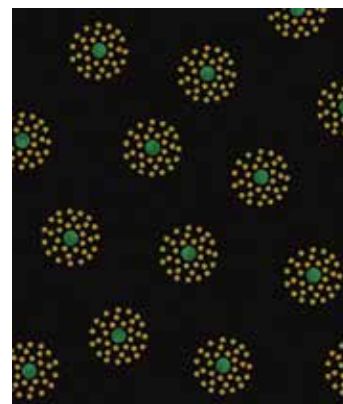
6994-99



6995-99



6996-99



6997-99