

## GO! DIY Face Mask

Finished Size: Small/Child: 6 x 9-1/2" Medium/Women: 6-1/2" x 11-1/4"  
Large/Men: 7-1/4" x 12-1/2"



## Dies Needed:

### GO! DIY Face Mask Die

Small-Child (55183)

Medium-Women (55184)

Large-Men (55185)

## Optional Items

- Bias Tape, 2" wide 6" long, prewash
- Nose wire, 6"
- Elastic cord for ear loops 16", or, shoelace/ribbon/cord with at least 44" length for the head tie (if you are opting against the strap provided on the die).

## Fabric Requirements:

Fabric Color	Total Yardage
Assorted Fabric	<p>Small Face Mask: 11-1/2" x 6-1/2" of cotton fabric for main and lining pieces (Prewash) 14" x 1-1/2" of cotton fabric for strap (Prewash)</p> <p>Medium Face Mask: 12-1/2" x 7" of cotton fabric for main and lining pieces (Prewash) 14" x 1-1/2" of cotton fabric for strap (Prewash)</p> <p>Large Face Mask: 12-1/2" x 7-1/2" of cotton fabric for main and lining pieces (Prewash) 16" x 1-1/2" of cotton fabric for strap (Prewash)</p>

### Cutting Directions:

Fabric Color	Die	Number of Shapes to Cut
Fabric of Choice	GO! DIY Facemask Die (Small/Child)	Wrong sides together, cut two of outer face unit and two of inner face unit Note: main piece is 1/2" longer than lining piece.
Fabric of Choice	GO! DIY Facemask Die (Small/Child)	Wrong sides together, cut four strips for the face straps
Fabric of Choice	GO! DIY Facemask Die (Medium/Women)	Wrong sides together, cut two of outer face unit and two of inner face unit Note: main piece is 1/2" longer than lining piece.
Fabric of Choice	GO! DIY Facemask Die (Medium/Women)	Wrong sides together, cut four strips for the face straps
Fabric of Choice	GO! DIY Facemask Die (Large/Men)	Wrong sides together, cut two of outer face unit and two of inner face unit Note: main piece is 1/2" longer than lining piece.
Fabric of Choice	GO! DIY Facemask Die (Large/Men)	Wrong sides together, cut four strips for the face straps
Elastic	optional in lieu of strip	Scissor cut elastic at 7"
Nose Wire	Optional	

## Sewing Directions:

Use ¼" seams, unless otherwise indicated.

**NOTE:** Directions will be for one DIY Face Mask with opening for Filter

1. Mark main fabric 1" from raw edge.
  
2. Sew main fabric together along center line using a 3/8" seam allowance, clip curve and press seam to one side. (Figure 1)
  
3. Sew lining fabric together along center line using a 1/2" seam allowance, clip curve and press seam to one side. (Figure 1)

TO ADD A NOSE WIRE (Optional):

- a. Follow steps to cut out fabric.
- b. Cut a strip of fabric on bias 1" x 6", finish ends and fold in half (or, use bias tape)
- c. Align bias tape along top edge of lining on right side and topstitch to hold in place.
- d. Insert pipe cleaner or wire of choice into bias strip.
  
4. Turn and press long raw edge of lining fabric and main fabric, turning fabric under approx. 1/2". Note: this seam will be sewn in the final step when mask is turned.
  
5. Place the lining fabric on the main fabric, RST, aligning the center seams. Clip curves, leaving 1/2" from ends un-clipped. (Figure 2)



Figure 1



Figure 2

6. Press under remaining edge of main fabric to make a finished edge. Clip curve to edge of lining. Turn remaining main fabric to wrong side of mask. This will be sewn done when topstitching.

7. Turn right side out, press flat and top stitch along the top edge. (Figure 3)



Figure 3

### Option 1 (Straps)

8. Take the 4 strips and press them in half. After pressing them in half, press the edges to the middle. Stitch close to edge of both strips to close ends. Stitch along the width of the strip to close.

**Optional note:** If available use bias binding foot. (Figure 4)

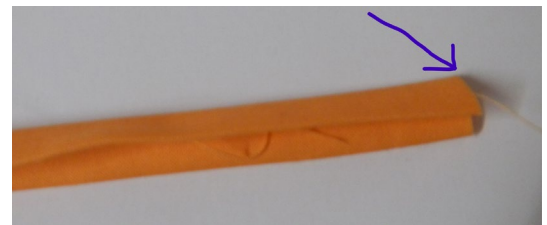


Figure 4

9. Secure one tie to each corner of the mask using box stitch. (Figure 5)

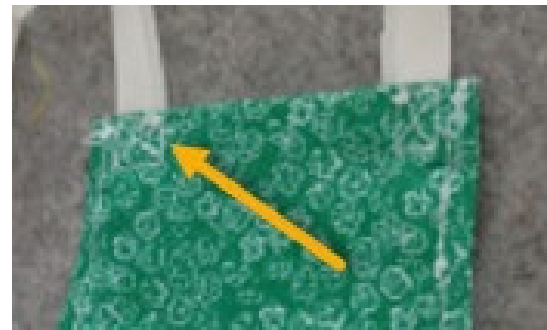


Figure 5

## Option 2 (Elastic)

- To make pocket for elastic, turn main fabric under 1/4" and top stitch. (Figure 6)



Figure 6

- Fold main fabric towards lining fabric along stitching line and topstitch the top fabric only. (Figure 7)



Figure 7

- If inserting elastic, topstitch along the top of the mask, stopping at the edge of the lining fabric (do not sew through opening of main fabric).

- Insert elastic into the casing of the main fabric.

- Sew bottom of mask closed using a topstitch. (Figure 8)



Figure 8