



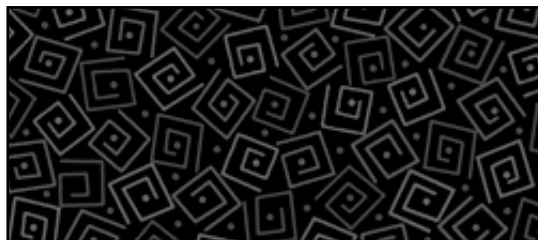
Designed By: Sandra L. Hatch & Connie Rand  
Finished Quilt Size: 66" x 46"

Designed by: Sandra L. Hatch & Connie Rand





24987 X



24779 J



24779 R



23528 EA

QUILT REQUIREMENTS		
		12 Kits
Design:	Yards	Bolts
24987 X	2 Panels	2
24779 J	1 $\frac{3}{8}$	2
24779 R (includes binding)	1 $\frac{3}{8}$	2
23528 EA	$\frac{1}{3}$	1
Backing fabric of choice	3 $\frac{3}{8}$	4

### Cutting Directions

WOF = width of fabric from selvage to selvage.

#### 24987 X - Hot Rods Panel

- Fussy-cut (20) 4 $\frac{1}{2}$ " squares from 1 panel, centering a hot rod motif in each square.
- Remove selvage edges and square long edges of remaining panel to approximately 42 $\frac{1}{2}$ " x 23 $\frac{1}{2}$ ".

#### 24779 J - Black Texture

- Cut (4) 4" x WOF strips for inner framing borders.
- Cut (6) 2" x WOF strips for outer borders.
- Cut (1) 4 1/2" x WOF strip. Recut strip into (4) 4 $\frac{1}{2}$ " squares.
- Cut (3) 2 $\frac{1}{2}$ " x WOF strips for Four-Patch units.
- Cut (5) 1 $\frac{1}{2}$ " x WOF strips for inner borders.

#### 24779 R - Red Texture

- Cut (4) 1 $\frac{1}{2}$ " x WOF strips for inner borders.
- Cut (5) 2" x WOF strips for outer borders.
- Cut (6) 2 $\frac{1}{4}$ " x WOF binding strips.

#### 23528 EA - Cream Tonal

- Cut (3) 2 $\frac{1}{2}$ " x WOF strips for Four-Patch units.

#### Backing fabric of choice

- Cut (2) 54" x WOF strips.

**Note:** Use a  $\frac{1}{4}$ " seam allowance for all stitching unless otherwise indicated.

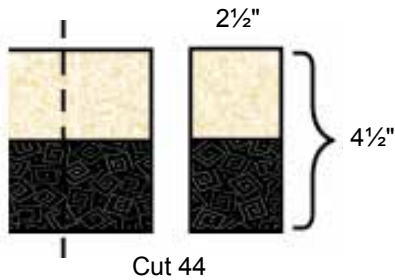
#### Preparing the Panel

1. Join the (4) 4" black strips on the short ends to make 1 long strip. Press seams open. Recut strip into 2 strips each 4" x 31" and 4" x 43" strips.

2. Sew the 4" x 43" strips to the top and bottom of the panel. Press seams toward the strips. Trim strip ends even with panel edges. Sew the 4" x 31" strips to the short ends of the panel. Press seams toward the strips.
3. Trim the bordered panel to 28 $\frac{1}{2}$ " x 48 $\frac{1}{2}$ ", centering the panel when trimming.
4. Join the 1 $\frac{1}{2}$ " red strips on the short ends to make 1 long strip. Press seams open. Recut strip into 2 each 1 $\frac{1}{2}$ " x 48 $\frac{1}{2}$ " top and bottom strips and 1 $\frac{1}{2}$ " x 30 $\frac{1}{2}$ " end strips. Sew the longer strips to the top and bottom and shorter strips to the short ends of the trimmed panel. Press seams toward the strips.
5. Join the 1 $\frac{1}{2}$ " black strips on the short ends to make 1 long strip. Press seams open. Recut strip into 2 each 1 $\frac{1}{2}$ " x 50 $\frac{1}{2}$ " top and bottom strips and 1 $\frac{1}{2}$ " x 32 $\frac{1}{2}$ " end strips. Sew the longer strips to the top and bottom and shorter strips to the short ends of the trimmed panel. Press seams toward the strips.

### Completing Four-Patch Units

1. Sew a 2½" black strip to a 2½" cream strip with right sides together along the length to make a strip set. Press seams toward the black strip. Repeat to make a total of 3 strip sets.
2. Recut the strip sets into (44) 2½" x 4½" black/cream segments.



3. Join 2 black/cream segments to make a Four-Patch unit. Press seam to 1 side. Repeat to make a total of 22 units.



Four-Patch Unit - Make 22

### Completing the Quilt

**Note:** Refer to the Quilt Diagram as needed.

1. Join 7 Four-Patch units with (6) 4½" hot rod squares to make the top strip, keeping the hot rods in the squares in an upright position in the strip. Press seams toward the hot rod squares. Repeat to make the bottom strip. Sew these strips to the top and bottom of the bordered panel keeping the hot rods upright.



Make 2

2. Join 4 each Four-Patch units and 4½" hot rod squares to make an end strip, keeping the hot rods upright and joining 2 hot rod squares in the center. Press seams toward the hot rod squares. Repeat to make a second end strip. Sew a 4½" black square to each end of each strip.



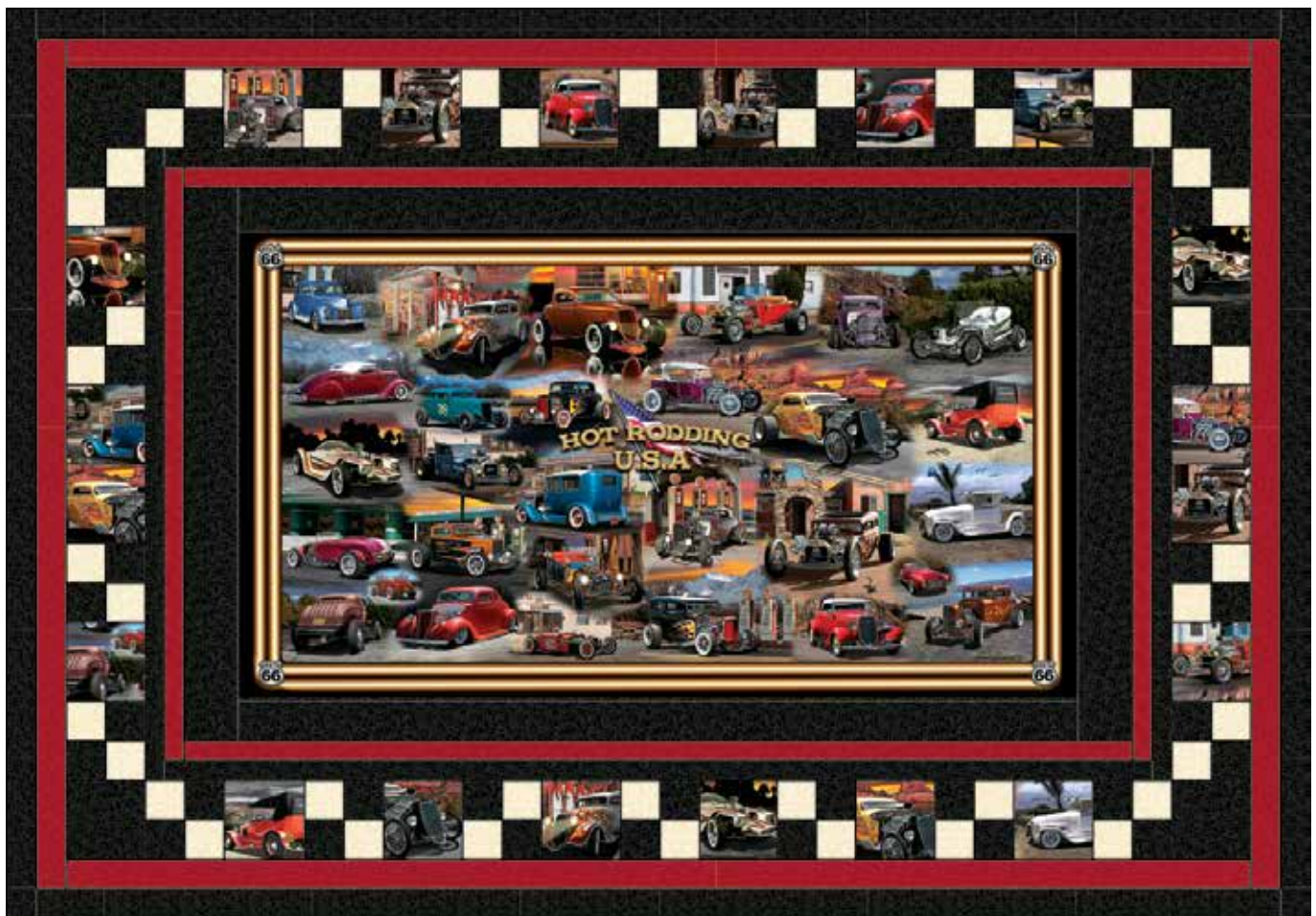
Make 1 each

3. Sew an end strip to each end of the bordered panel, keeping the hot rods upright. Press seams away from the end strips.





4. Join the 2" red strips on the short ends to make 1 long strip. Press seams open. Recut strip into 2 each 2" x 43½" end strips and 2" x 60½" top and bottom strips. Sew the longer strips to the top and bottom and shorter strips to the short ends of the bordered panel. Press seams toward the strips.
5. Repeat step 4 with the 2" black strips and recut into 2 each 2" x 46½" end strips and 2" x 63½" top and bottom strips.
6. Join the (6) 2¼"-wide red texture binding strips on the short ends with diagonal seams, trim seams to ¼" and press open to make a long strip. Fold the strip with wrong sides together along the length and press to make a double-layered binding.
7. Remove the selvage edges from the backing rectangles and join along the 54" edges using a ½" seam allowance. Press seam open. Trim to make a 74" x 54" backing rectangle.
8. Layer the quilt top with the backing rectangle and a 74" x 54" piece of batting. Pin or baste to hold. Quilt as desired. Trim batting and backing even with the top.
9. Bind the edges using your favorite method and the prepared binding strip to complete the quilt.



Quilt Diagram