



14472 Molly Pitcher Hwy
Greencastle PA 17225
Mon., Tue. & Fri.: 9 a.m. - 5 p.m.
Wed. & Sat.: 9 a.m. - 3 p.m.
Thur.: 9 a.m. - 6 p.m.
Phone: (717) 597-0051

PRESORT
FIRST CLASS
U.S. POSTAGE
PAID
Mercersburg, PA
Permit #15



Sign up for classes at
greencastlesewing.com

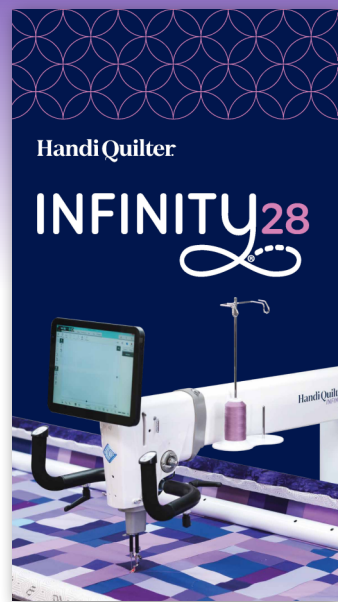
TEST DRIVE THIS MACHINE AT OUR STORE!

PERFORMANCE HIGHLIGHTS

- 28" Throat Space
- Quiet and Smooth Stitching
- 3,100 SPM Regulated Stitching
- High-Res Under-Quilt Camera
- Simple Maintenance
- Manual and Motorized Tension Control
- Tension-Release Button
- Pinpoint Needle Laser
- Full Needle Up/Down/Stop
- Needle Position Buttons
- Longarm Needle Installed (Rnd. Shaft)
- Universal Needle Compatible
- Quick Feet System, includes: Closed Toe, Open Toe, and Glide Foot
- LED Light System
- Bobbin Thread Cutter
- Thread Break Sensor
- Tie-Off Stitches
- Magnetic Scissor Holder
- Independently Adjustable Handlebars
- Smart Front Power Switch

Easy automation. Comfortable quilting.

Finish quilts faster with perfectly placed stitches. Pro-Stitcher is fully integrated into the Infinity 28, letting you switch to automated quilting at the touch of a button. Easily stitch complex or edge-to-edge designs, fit borders with Border Skew, and create or edit patterns using Pro-Stitcher Designer™ Paired with the Gallery Frame's built-in lift system with adjustable heights from 28" to 51", the Infinity 28 delivers comfort, control, and creative freedom in every stitch.



Spring Class Schedule April - June 2026

To keep posted with the latest classes, visit our website
www.greencastlesewing.com

Supply list for the classes are posted online as well. Just click on the class and you should be able to see the supplies you will need for each class

Inside this issue:

Yard Sale	2
Kids' Class	3
Project Classes	4
Quilt Classes	5
Embroidery Classes	6
New Owner Class Schedule	7
Machine Test Drive	8

Closed Memorial Day
May 25th

Closed June 3rd

Floriani Software Classes

You asked and we delivered!



We are happy to provide you with ongoing Floriani FTCU classes. Starting April 20th we plan to have a class in our store taught by Laurie Lagrange. She will be attending virtually!

Laurie Lagrange
Monday April 20, 1:00 - 3:00
3rd Monday of each month
Class Dates: May 18, June 15, 1:00 - 3:00 PM
Class Fee: \$30 each class



Bring your laptops with FTCU already installed.

Address: 14472 Molly Pitcher Hwy, Greencastle PA 17225
Hours: Mon., Tue. & Fri.: 9 a.m. - 5 p.m.
Wed. & Sat.: 9 a.m. - 3 p.m. Thur.: 9 a.m. - 6 p.m.
Phone: (717) 597-0051

Email: mike@greencastlesewing.com
thegirls@greencastlesewing.com
krystal@greencastlesewing.com
Website: www.greencastlesewing.com

YARD SALE

Friday, May 22 & Saturday, May 23

9:00am - 2:00pm

- Quilts
- Thread
- Notions
- Bags
- Older model sewing machines
- Patterns
- Embroidery Designs
- Books
- Fabric

AT OUR STORE!

Food trailer on May 23rd



Pre Loved Machines

Call for Pricing

Sewing and embroidery

- Baby Lock Solaris - all upgrades
- Baby Lock Altair - all upgrades
- Baby Lock Unity
- Baby Lock Aurora
- Bernina 790 - upgraded to Plus
- Bernina 830
- Bernina 790 Pro
- Bernina 880

Embroidery Only

- Baby Lock Meridian

Longarm Quilting Machines

- HQ Infinity 26 with Prostitcher 12ft frame
- HQ Amara with NEW Prostitcher, NEW 12ft Frame
- Juki QVP 2200 with 10 ft frame

3 - Floor Model Gristmill Solid Wood Cabinets - heavily discounted!

New Owners Class Schedule

These classes are free to our customers. Come as often as you wish. Call (717) 597-0051 to reserve your seat. Please bring your sewing machine or serger and attachments to your guide class.

BERNINA Sewing Machines

All BERNINA Sewing Machines	Machine Basics	Tuesday, April 7 Friday, June 5	10:00 am 10:00 am
All BERNINA Sewing Machines	Creative Quilting	Tuesday, April 14 Friday, June 12	10:00 am 10:00 am
All BERNINA Sewing Machines	Decorative Sewing	Tuesday, April 21 Friday, June 19	10:00 am 10:00 am
BERNINA Embroidery Machines	Embroidery Basics	Tuesday, April 28 Friday, June 26	10:00 am 10:00 am
BERNINA Embroidery Machines	Advanced Embroidery	Friday, May 1	10:00 am

Baby Lock Sewing Machines

Baby Lock Top-of-the Line	Machine Basics	Thursday, April 2 Monday, June 1	10:00 am 10:00 am
Baby Lock Top-of-the Line	Beyond Basics	Thursday, April 16 Monday, June 15	10:00 am 10:00 am
Baby Lock Top-of-the Line	Advanced Sewing	Thursday, April 23 Monday, June 22	10:00 am 10:00 am
Baby Lock Top-of-the Line	Embroidery Basics	Thursday, April 30 Monday, June 29	10:00 am 10:00 am
Baby Lock Mid-Line	Machine Basics	Monday, May 11 Thursday, June 18	10:00 am 10:00 am
Baby Lock Mid-Line	Beyond Basics	Monday, May 18 Thursday, June 25	10:00 am 10:00 am
Baby Lock Mid-Line	Embroidery Basics	Thursday, June 4 Thursday, July 2	10:00 am 10:00 am

SERGERS

Baby Lock Sergers without Tensions	Thursday, May 7	10:00 am
Baby Lock Sergers with Tensions	Saturday, April 18	10:00 am
Baby Lock Serger Techniques	Wednesday, May 27	10:00 am
Baby Lock Chain & Coverstitch	Tuesday, June 30	10:00 am
Bernina Serger Basics #1	Wednesday, May 6	10:00 am
Bernina Serger Basics #2	Friday, May 29	10:00 am
Bernina Serger Techniques	Thursday, June 4	3:00 pm

BERNINA 990

990 Sewing Features #1	Tuesday, May 12	10:00 am
990 Sewing Features #2	Tuesday, May 19	10:00 am
990 Quilting Features #1	Tuesday, May 26	10:00 am
990 Quilting Features #2	Tuesday, June 2	10:00 am
990 Embroidery Features #1	Tuesday, June 9	10:00 am
990 Embroidery Features #2	Tuesday, June 23	10:00 am

Baby Lock Top of the Line

- Radiance
- Solaris Vision
- Altair
- Aerial
- Anthem
- Chorus
- Ballad

Baby Lock Mid-Line

- Soprano
- Vesta
- Flare
- Lyric
- Brilliant
- Presto II
- Jubilate
- Accord
- Bloom
- Verve
- Aurora

Class goes better when you come prepared with your supplies and pre-cutting done.

If you have any questions about what you need for class, call or stop by and we'll be glad to help. Instructors often put their email address on the bottom of the supply list so you can email the instructor with questions as well.

Class Policy

1. To register for our classes, we require class fees to be paid at least one week ahead.
2. Download the supply list from our website or stop by our store and ask for a supply list so you can be sure to have what you need for the class.
3. If we do not receive enough sign ups for a class, we will refund your money or credit that amount toward another class or any purchase in our store.
4. To receive a full refund on a class fee, please let us know one week before the first class.

Machine Embroidery Classes

IQ Designer Basics

If you have a machine with IQ Designer but feel unsure where to start, this class is for you! It covers basic features from the beginning, and you're welcome to bring any questions as you begin using IQ Designer.

Gwen Martin

Thursday April 16 1:00 - 4:00

This is for all Baby Lock machines that have IQ designer.
Class fee \$30 (FREE, if you purchased your machine from us)
IQ Designer book is not required for this class



Mastering your IQ Designer

Learn how to get the most out of your IQ Designer with these easy-to-follow project classes. All these classes will be taken from the new Baby Lock SEWED IQ Designer Project and Inspirational Book. Because these classes are from a book you will go home with all the instructions to recreate these projects. Sign up for this 2 part class to reserve your spot. Both classes are required to finish the project.



IQ Designer Book is required for these classes!

Create a tiled tote while learning to build shapes in IQ Designer.

Gwen Martin
Part 1: Thursday May 21 10:00 - 3:00
Part 2: Thursday May 28 10:00 - 3:00
Class fee \$60



For Your Information

Online Promotions: Did you see a good deal online? We honor promotions of products we sell. Sometimes we beat them!! It never hurts to ask!

Affiliate Links: We have an affiliate link with OESD. This helps us by giving a kickback from the items you buy. Use the link on our website under **Shop Online** and then click on the **Designs** tab and click on, **Click here to shop OESD.**
<https://www.greencastlesewing.com/shop/Designs>

Sewing Machine need serviced? Summer months is the time to get your machine serviced if you want it back quickly! We normally don't have as many machines to service in the summer.

Kids Class

Kids Sewing Class - Blanket

Join us for a kids sewing class designed to teach straight line sewing and essential piecing skills. Participants will create a finished blanket measuring 33½ x 43½ inches. You have the option to select your own fabric or request a kit prepared for the class.

Stitch N Time Staff
Wednesday June 24, 10:00 - 3:00
Class Fee: \$55 Includes all fabric and thread

Incredible deals on the Baby Lock Jubilant - option to buy the machine used in class!



Machines and snacks provided

We are now an Accuquilt dealer. Lots of products are being shipped to our store in the coming weeks!



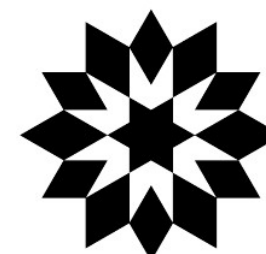
@ accuquilt®



We will be displaying Bernina, Baby Lock, Handi Quilter, Accuquilt and various other products!

Visit our booth at the Northern Shenandoah Valley Quilt Show!

April 10-11
225 Al Smith Circle Berryville VA 22611



Project Classes

Lighthouse Applique



Want to use fabric scraps and learn machine appliqué? This 6"x21" wall hanging features a lighthouse with a red roof and black accents, set against a rustic background. Below, a quaint house with a red roof brings a homely feel. No required fabric piece is greater than 1/8 yd. which makes it convenient to use scrap fabric pieces. The skill level is perfect for beginners.

Christina Martin
Friday May 8, 10:00 - 4:00
Class Fee: \$35

Sewing Machine Rug

This sewing-themed floor canvas uses a raw edge appliqué technique, creating a durable, washable rug that's quick and easy to make. It's a usable quilt for the floor, perfect as a gift, and fun to create. The kit includes everything needed except batting, which can be made from leftover scraps.

Jackie Kelso
Friday April 24, 10:00 - 3:00
Class Fee: \$40 + Kit Fee



Baby Lock Club



Are you wanting to understand your Baby Lock machine better? These classes will guide you through the various feet and accessories that accompany your machine. We will introduce new feet and accessories specifically designed for your model. You'll learn about all the capabilities your machine has to offer. Each month features a different focus, so be sure to visit our website regularly to see what's coming up!

Stitch N Time Staff
Third Wednesday of each month 10:00 - 12:00
Class Fee: \$10 each month
Class Dates: April 15, May 20, June 17

Sew Sunshine for Foster Children

Join Karen Brindle to sew brighter days for foster children in our community. Often left with few belongings, these children deserve a little sunshine. Bring your sewing machine and a snack to share for lunch.

Thursday, April 9, May 14, June 11, 10:00 - 2:30



Quilt Classes

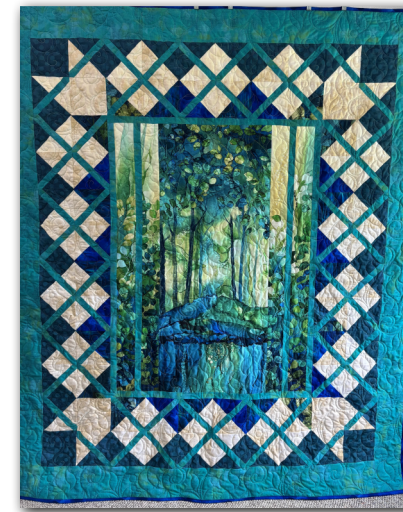
Ruler Work Foundations: Precision Quilting for Beginners

This crafty crash course is perfect for quilters that are just beginning ruler work or anyone looking to boost their confidence! Dive into the essentials of ruler-guided quilting—machine setup, nifty techniques, and beginner-friendly designs—all wrapped up in a super supportive atmosphere.

Cris Roach
Tuesday, June 16, 10:00 - 2:30
Class Fee: \$45
Kit Fee: \$25 payable to Cris on the day of class



Stripology No Diggity



Quilters who've tackled No Diggity rave about its magic – it's like giving a fabulous fabric panel a stylish makeover! With options galore, stitchers can grab their trusty Stripology rulers or go old-school with classic tools, depending on their preference.

Cris Roach
Tuesday, May 5, 10:00 - 4:00
30 Minute Lunch Break
Class Fee: \$60

Block of the Month & UFO Class



Come in to our store and work on your Solare, Symphony, Calypso or the new Hyperion Block of the Month. Or just bring a UFO to work on and enjoy sewing with others..

Wendy Smith
Second Wednesday of each month
April 8, May 13, June 10
10:00 - 2:00
Class Fee: \$10

