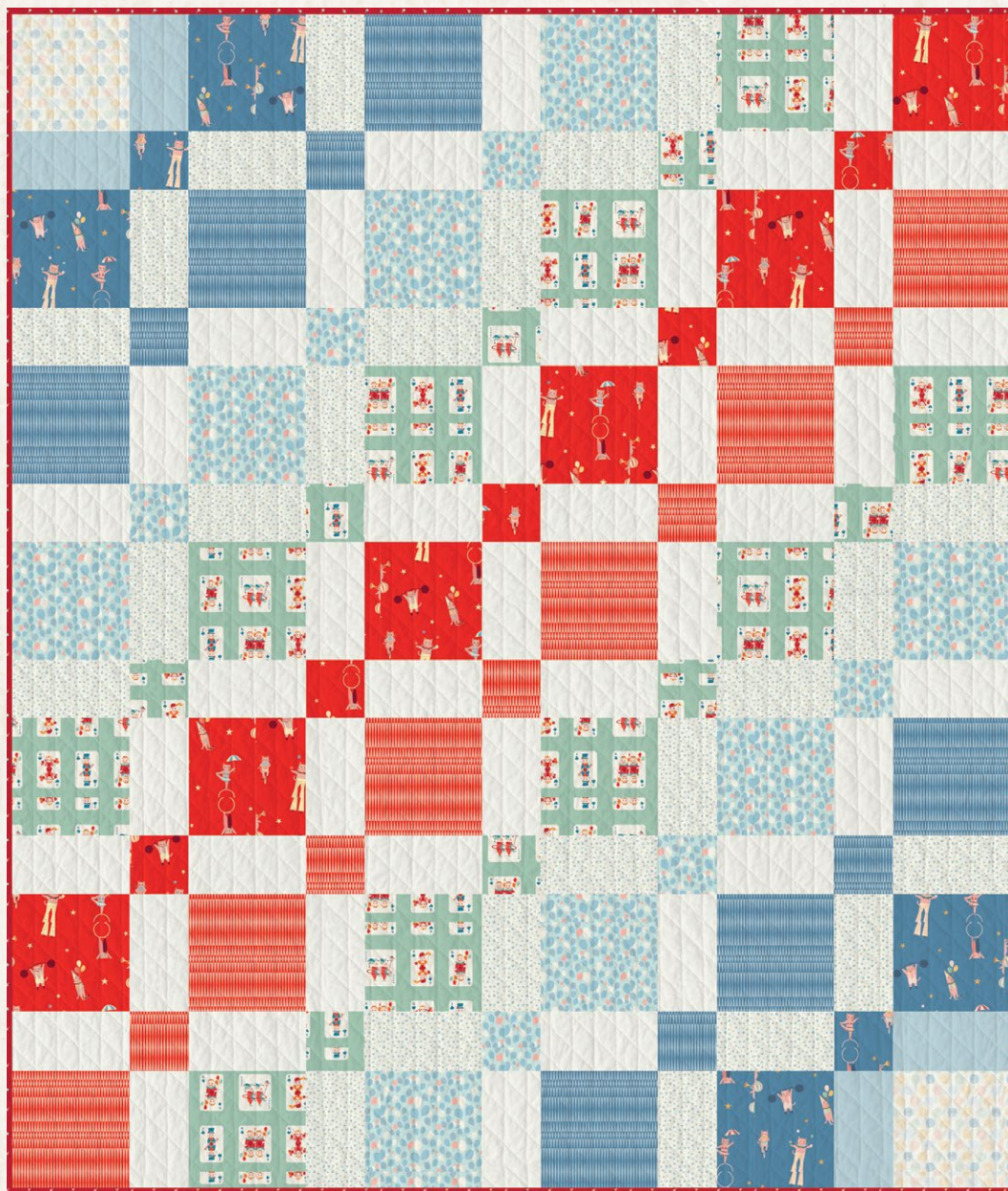


X
X
X
X
X
X
X
X
X
X
X
X

PURR PARADE EDITION



× × × × × × × × × × × × × × × × × × × ×

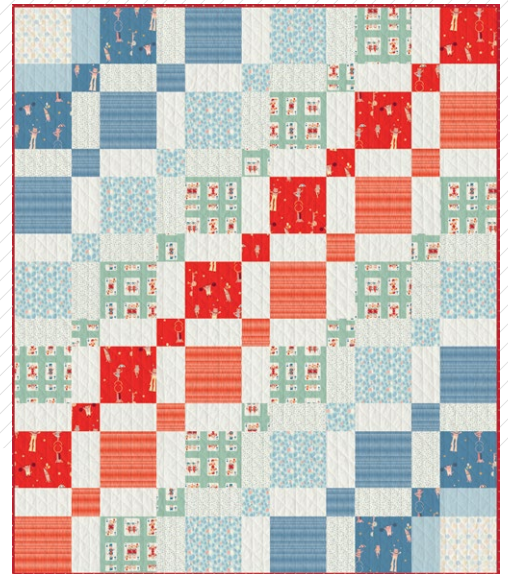


LET'S PLAY

PURR PARADE EDITION

QUILT DESIGNED BY *AGFstudio*

PURR PARADE



FABRICS DESIGNED BY AGF STUDIO



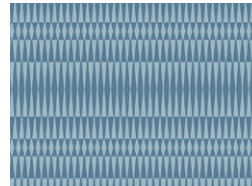
Fabric A

PRP54208
FESTIVAL DOTS



Fabric B

PRP54200
PURRFECT PERFORMERS
COOL



Fabric C

PRP54209
CARNIVAL STRIPE SKY



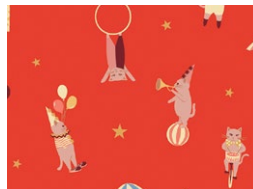
Fabric D

PRP54203
SKY CELEBRATION



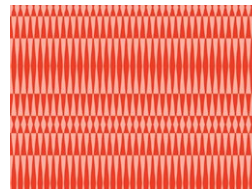
Fabric E

PRP44207
WHISKER DECK



Fabric F

PRP44200
PURRFECT PERFORMERS
WARM



Fabric G

PRP44209
CARNIVAL STRIPE FLAME



Fabric H

PE 572
ADRIFT



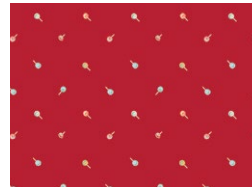
Fabric I

PRP54205
ACES OF SUITS



Fabric J

PE 408
WHITE LINEN



Fabric K (Binding)

PRP44204
SWEET SWIRLS



BACKING

PRP44202
FESTIVAL WONDERS





PURR PARADE EDITION

FINISHED SIZE | 68½" x 80½"

FABRIC REQUIREMENTS

Fabric A	MVL44406	¼ yd.
Fabric B	MVL44407	¾ yd.
Fabric C	MVL44409	½ yd.
Fabric D	MVL44402	⅝ yd.
Fabric E	MVL44405	⅞ yd.
Fabric F	MVL44410	½ yd.
Fabric G	MVL44400	½ yd.
Fabric H	PE 477	¼ yd.
Fabric I	MVL44408	⅞ yd.
Fabric J	PE 496	1½ yd.
Fabric K	BIN25114	⅝ yd.

BACKING FABRIC

MVL44411 Panel 5¾ yds *(Suggested)*

Other fabric 5¼ yds *(Suggested)*

BINDING FABRIC

Fabric **K** BIN25114 *(Included)*

CUTTING DIRECTIONS

¼" seam allowances are included.
WOF means width of fabric.

Fabric A

- Two (2) 8½" squares.

Fabric B

- Four (4) 8½" squares.
- Two (2) 4½" squares.

Fabric C

- Six (6) 8½" squares.
- Four (4) 4½" squares.

Fabric D

- Eight (8) 8½" squares.
- Six (6) 4½" squares.

Fabric E

- Ten (10) 8½" squares.
- Eight (8) 4½" squares.

Fabric F

- Six (6) 8½" squares.
- Five (5) 4½" squares.

Fabric G

- Six (6) 8½" squares.
- Five (5) 4½" squares.

Fabric H

- Four (4) 4½ x 8½" rectangles.

Fabric I

- Twenty Four (24) 4½ x 8½" rectangles.

Fabric J

- Forty three (43) 4½ x 8½" rectangles.

Fabric K

- Eight (8) 2½" x WOF strips. (Binding)

CONSTRUCTION

Sew all rights sides together with $\frac{1}{4}$ " seam allowance.

- There are thirteen (13) different rows in this quilt.
- Start constructing the rows from #1 to #13 following the diagrams below.

ROW #1:

- Take one (1) $8\frac{1}{2}$ " square from fabrics **A, B, C, D, E** & **F**, one (1) $4\frac{1}{2}$ " x $8\frac{1}{2}$ " rectangle from fabric **H** and two (2) $4\frac{1}{2}$ " x $8\frac{1}{2}$ " rectangles from fabrics **I** & **J**.
- Attach them in the order **A-H-B-I-C-J-D-I-E-J-F**.
- Press and set aside.



DIAGRAM 1

ROW #2:

- Take one (1) $4\frac{1}{2}$ " square from fabrics **B, C, D, E** & **F**, one (1) $4\frac{1}{2}$ " x $8\frac{1}{2}$ " rectangle from fabric **H**, two (2) $4\frac{1}{2}$ " x $8\frac{1}{2}$ " rectangles from fabric **I** and three (3) $4\frac{1}{2}$ " x $8\frac{1}{2}$ " rectangles from fabric **J**.
- Attach them in the order **H-B-I-C-J-D-I-E-J-F-J**.
- Press and set aside.



DIAGRAM 2

ROW #3:

- Take one (1) $8\frac{1}{2}$ " square from fabrics **B, C, D, F** & **G**, two (2) $4\frac{1}{2}$ " x $8\frac{1}{2}$ " rectangles from fabric **I** and three (3) $4\frac{1}{2}$ " x $8\frac{1}{2}$ " rectangles from fabric **J**.
- Attach them in the order **B-I-C-J-D-I-E-J-F-J-G**.
- Press and set aside.



DIAGRAM 3

ROW #4:

- Take one (1) $4\frac{1}{2}$ " square from fabrics **C, D, E, F** & **G**, two (2) $4\frac{1}{2}$ " x $8\frac{1}{2}$ " rectangles from fabric **I** and four (4) $4\frac{1}{2}$ " x $8\frac{1}{2}$ " rectangles from fabric **J**.
- Attach them in the order **I-C-J-D-I-E-J-F-J-G-J**.
- Press and set aside.



DIAGRAM 4

ROW #5:

- Take one (1) $8\frac{1}{2}$ " square from fabrics **C, D, F** & **G**, two (2) $8\frac{1}{2}$ " squares from fabric **E**, one (1) $4\frac{1}{2}$ " x $8\frac{1}{2}$ " rectangle from fabric **I** and four (4) $4\frac{1}{2}$ " x $8\frac{1}{2}$ " rectangles from fabric **J**.
- Attach them in the order **C-J-D-I-E-J-F-J-G-J-E**.
- Press and set aside.



DIAGRAM 5

ROW #6:

- Take one (1) $4\frac{1}{2}$ " square from fabrics **D, F** & **G**, two (2) $4\frac{1}{2}$ " squares from fabric **E**, two (2) $4\frac{1}{2}$ " x $8\frac{1}{2}$ " rectangles from fabric **I** and four (4) $4\frac{1}{2}$ " x $8\frac{1}{2}$ " rectangles from fabric **J**.
- Attach them in the order **J-D-I-E-J-F-J-G-J-E-I**.
- Press and set aside.



DIAGRAM 6

ROW #7:

- Take one (1) $8\frac{1}{2}$ " square from fabrics **F** & **G**, two (2) $8\frac{1}{2}$ " squares from fabrics **D** & **E**, two (2) $4\frac{1}{2}$ " x $8\frac{1}{2}$ " rectangles from fabric **I** and three (3) $4\frac{1}{2}$ " x $8\frac{1}{2}$ " rectangles from fabric **J**.
- Attach them in the order **D-I-E-J-F-J-G-J-E-I-D**.
- Press and set aside.

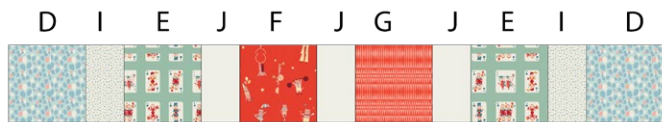


DIAGRAM 7

ROW #8:

- Take one (1) $4\frac{1}{2}$ " square from fabrics **D, F & G**, two (2) $4\frac{1}{2}$ " squares from fabric **E**, two (2) $4\frac{1}{2}$ " x $8\frac{1}{2}$ " rectangles from fabric **I** and four (4) $4\frac{1}{2}$ " x $8\frac{1}{2}$ " rectangles from fabric **J**.
- Attach them in the order **I-E-J-F-J-G-J-E-I-D-J**.
- Press and set aside.



DIAGRAM 8

ROW #9:

- Take one (1) $8\frac{1}{2}$ " square from fabrics **C, D, F & G**, two (2) $8\frac{1}{2}$ " squares from fabric **E**, one (1) $4\frac{1}{2}$ " x $8\frac{1}{2}$ " rectangle from fabric **I** and four (4) $4\frac{1}{2}$ " x $8\frac{1}{2}$ " rectangles from fabric **J**.
- Attach them in the order **E-J-F-J-G-J-E-I-D-J-C**.
- Press and set aside.

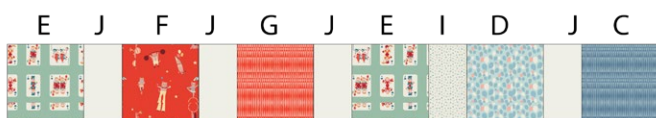


DIAGRAM 9

ROW #10:

- Take one (1) $4\frac{1}{2}$ " square from fabrics **C, D, F & G**, two (2) $4\frac{1}{2}$ " x $8\frac{1}{2}$ " rectangles from fabric **I** and four (4) $4\frac{1}{2}$ " x $8\frac{1}{2}$ " rectangles from fabric **J**.
- Attach them in the order **J-F-J-G-J-E-I-D-J-C-I**.
- Press and set aside.



DIAGRAM 10

ROW #11:

- Take one (1) $8\frac{1}{2}$ " square from fabrics **B, C, D, F & G**, two (2) $4\frac{1}{2}$ " x $8\frac{1}{2}$ " rectangles from fabric **I** and three (3) $4\frac{1}{2}$ " x $8\frac{1}{2}$ " rectangles from fabric **J**.
- Attach them in the order **F-J-G-J-E-I-D-J-C-I-B**.
- Press and set aside.



DIAGRAM 11

ROW #12:

- Take one (1) $4\frac{1}{2}$ " square from fabrics **B, C, D, E & G**, one (1) $4\frac{1}{2}$ " x $8\frac{1}{2}$ " rectangle from fabric **H**, two (2) $4\frac{1}{2}$ " x $8\frac{1}{2}$ " rectangles from fabric **I** and three (3) $4\frac{1}{2}$ " x $8\frac{1}{2}$ " rectangles from fabric **J**.
- Attach them in the order **J-G-J-E-I-D-J-C-I-B-H**.
- Press and set aside.



DIAGRAM 12

ROW #13:

- Take one (1) $8\frac{1}{2}$ " square from fabrics **A, B, C, D, E & G**, one (1) $4\frac{1}{2}$ " x $8\frac{1}{2}$ " rectangle from fabric **H** and two (2) $4\frac{1}{2}$ " x $8\frac{1}{2}$ " rectangles from fabrics **I & J**.
- Attach them in the order **G-J-E-I-D-J-C-I-B-H-A**.
- Press and set aside.



DIAGRAM 13

QUILT TOP

- Attach rows 1- 13
- Refer to diagram belowfor reference.

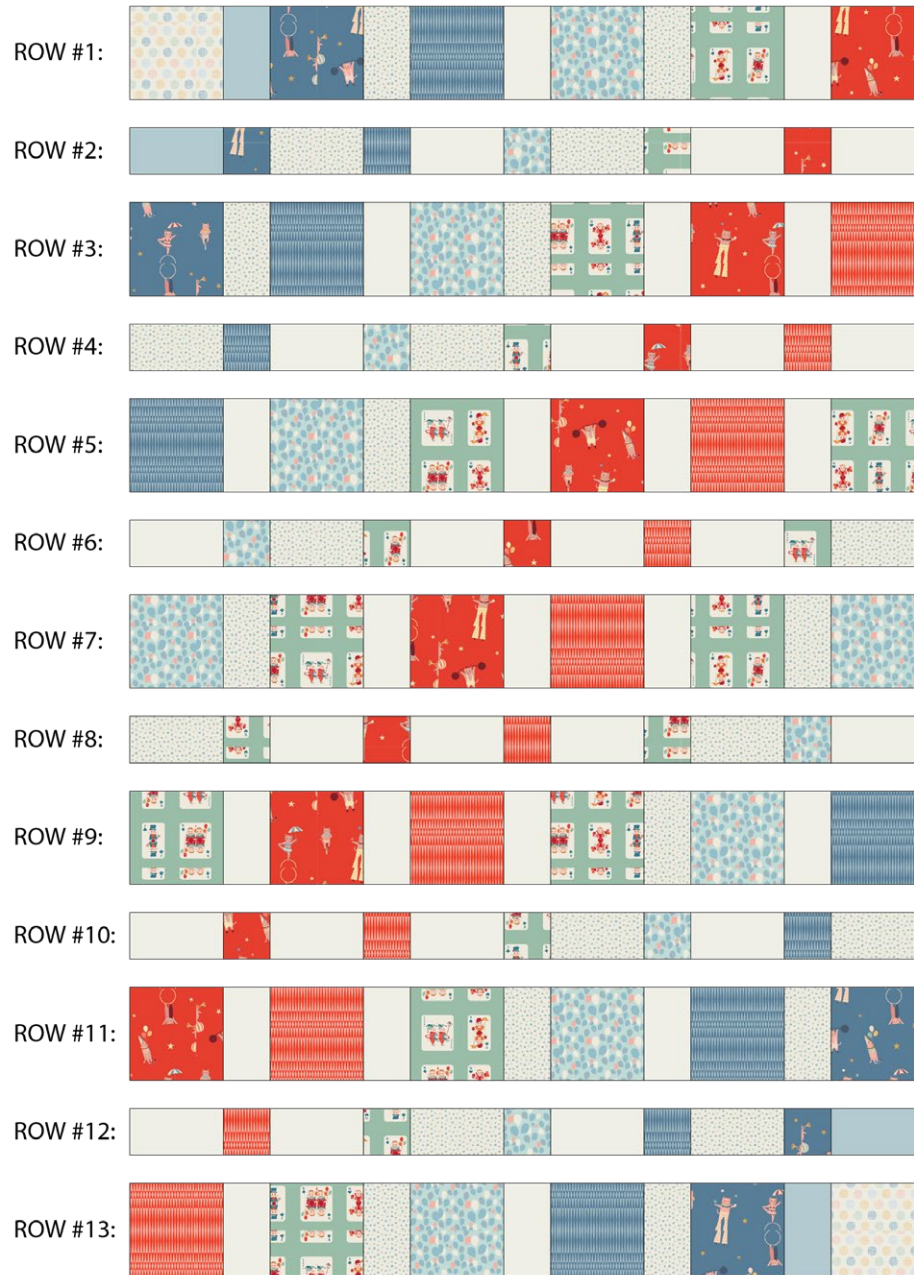


DIAGRAM 14

QUILT ASSEMBLY

Sew rights sides together.

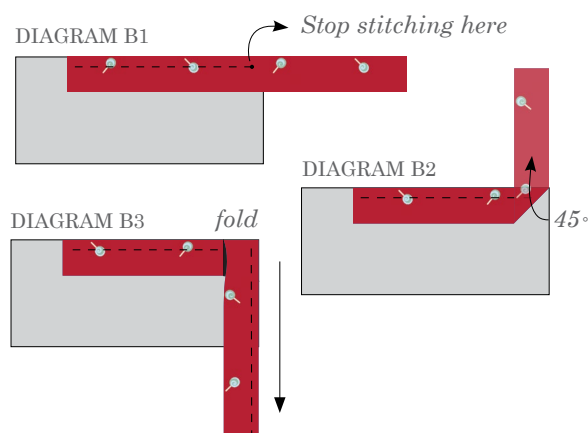
- Place BACKING FABRIC on a large surface wrong side up. Stretch it with masking tape against that surface.
- Place BATTING on top of backing fabric.
- Place TOP on top of the batting with right side facing up. Smooth away wrinkles using your hands.
- Pin all layers together and baste with basting thread, using long stitches. You can also use safety pins to join the layers.
- Machine or hand quilt starting at the center and working towards the corners. Remember that quilting motifs are a matter of personal preference. Have fun choosing yours!
- After you finished, trim excess of any fabric or batting, squaring the quilt to proceed to bind it.

BINDING

Sew rights sides together.

- Sew eight (8) 2½" x WOF strips from fabric **K** to make a final strip 308" long and fold the strip length-wise. Start sewing the binding strip in the middle of one side of the quilt leaving an approximated 5" tail. Sew with ¼" seam allowance (using straight stitch), aligning the strip's raw edge with the quilt top's raw edge.
- Stop stitching ¼" before the edge of the quilt (DIAGRAM B 1). Clip the threads. Remove the quilt from under the machine presser foot. Fold the strip in a motion of 45° and upward, pressing with your fingers (DIAGRAM B2). Hold this fold with your finger, bring the strip down in line with the next edge, making a horizontal fold that aligns with the top edge of the quilt (DIAGRAM B3). Start sewing at ¼" of the border, stitching all the layers. Do the same in the four corners of the quilt.

- Stop stitching before you reach the last 5 or 6 inches. Cut the threads and remove the quilt from under the machine presser foot. Lay the loose ends of the binding flat along the quilt edge, folding the ends back on themselves where they meet. Press them together to form a crease. Using this crease as the stitching line, sew the two open ends of the binding with right sides together (you can help yourself marking with a pencil if the crease is difficult to see).
- Trim seam to ¼" and press open. Complete the sewing. Turn binding to back of the quilt, turn raw edge inside and stitch by hand using blind stitch.



- If you are using our 2.5 edition (binding fabric), click or scan this QR code to see a tutorial on how to use this specialty fabric.



XXXXXXXXXXXXXXXXXXXXXXXXXXXXXXXXXXXX

*Congratulations
& enjoy*

XXXXXXXXXXXXXXXXXXXXXXXXXXXXXXXXXXXX



artgalleryfabrics.com

NOTE: While all possible care has been taken to ensure the accuracy of this pattern, We are not responsible for printing errors or the way in which individual work varies.

Please read instructions carefully before starting the construction of this quilt. If desired, wash and iron your fabrics before starting to cut.

© 2025 Courtesy of Art Gallery Quilts LLC. All Rights Reserved.