

Leafy Applique

Pattern from the book, Bold Blooms

By Kaffe Fassett

Pieced by Polly North

Quilted by Lori Allison

for www.allaboutcolorquilting.com

formerly the-sampler.com

(952) 471-0131

We reduced the number of blocks to 25 (from 42 in the book) to fit in the show booth better. Our quilt finished at 80" x 80."

Materials:

Book: Bold Blooms [\$35.00]

Background Pak [\$64.⁹⁵]

We used Robert Kaufman's Essex Linen Blend in Oyster with Metallic threads

Applique Pak [\$159.⁹⁵]

Assorted fat quarters, fat eighths & half yards to complete appliqué blocks.

Applique Enlargements [\$19.⁹⁵]

Eleven different blocks enlarged to 16" each. (May only be purchased with book)

Binding [\$11.⁷⁹]

1 yard Caterpillar Stripe – Blue for bias binding

Backing [\$54.⁹⁵]

5 yards Horse Chestnut – Green

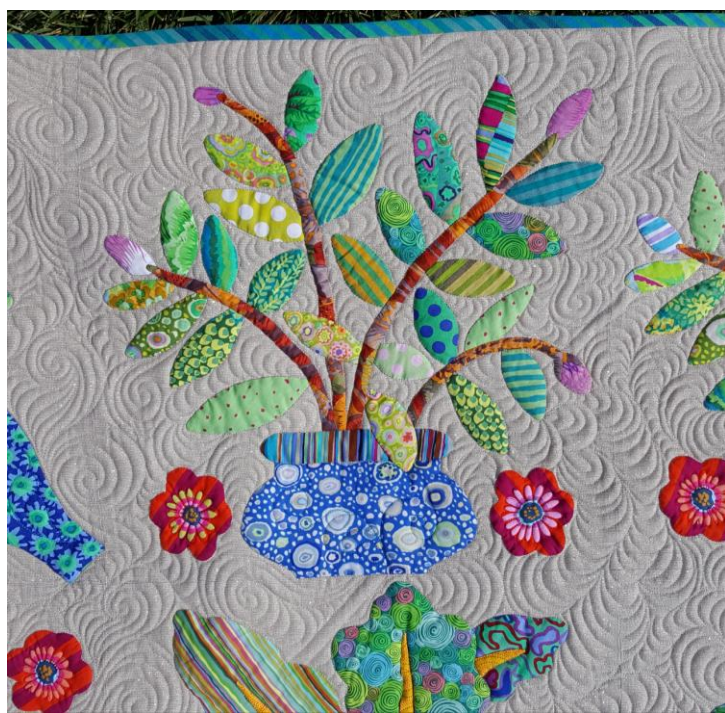
Methods:

Polly cut her background pieces and serged the edges of the backgrounds so that she could travel with the project and alleviate raveling of edges. Polly cut freezer paper the size of her appliqué pieces, pressed it to the right side of the prints, and then cut 1/8" around the freezer paper and hand needle-turned each piece using a glue-pin & appliqué pins to keep the piece in place. She used a #10 applique needle & Bottom Line thread to hand appliqué. When a section was finished, she cut out the backing behind each appliqué piece.

Polly used a plastic template to cut out the many leaf shapes for the border blocks & a Frixion pen to number the appliqué pieces.

Lori used Quilter's Dream "Request" cotton batting and Quilter's Dream Wool (over the cotton) when quilting the project on a long arm machine. She ditch quilted around each appliqué piece with matching Superior brand Bottom Line thread on the top and bottom. She also ditch quilted between two appliqué pieces when they were layered. Lori applied a medium dense fill to the quilt dividing it into three diamond shapes and changing the fill between the shapes. Lori used Superior's So Fine 50/3 in #504 Silver Screen. The dense quilting, combined with the two batts & cut-out backing technique give the appliqué pieces their dimensional appearance.

www.allaboutcolorquilting.com



↑Above: view of the back side of a block where the background behind the appliqué pieces has been trimmed out.



←Left: Backing is Horse Chestnut – Green
Binding is Caterpillar Stripe - Blue