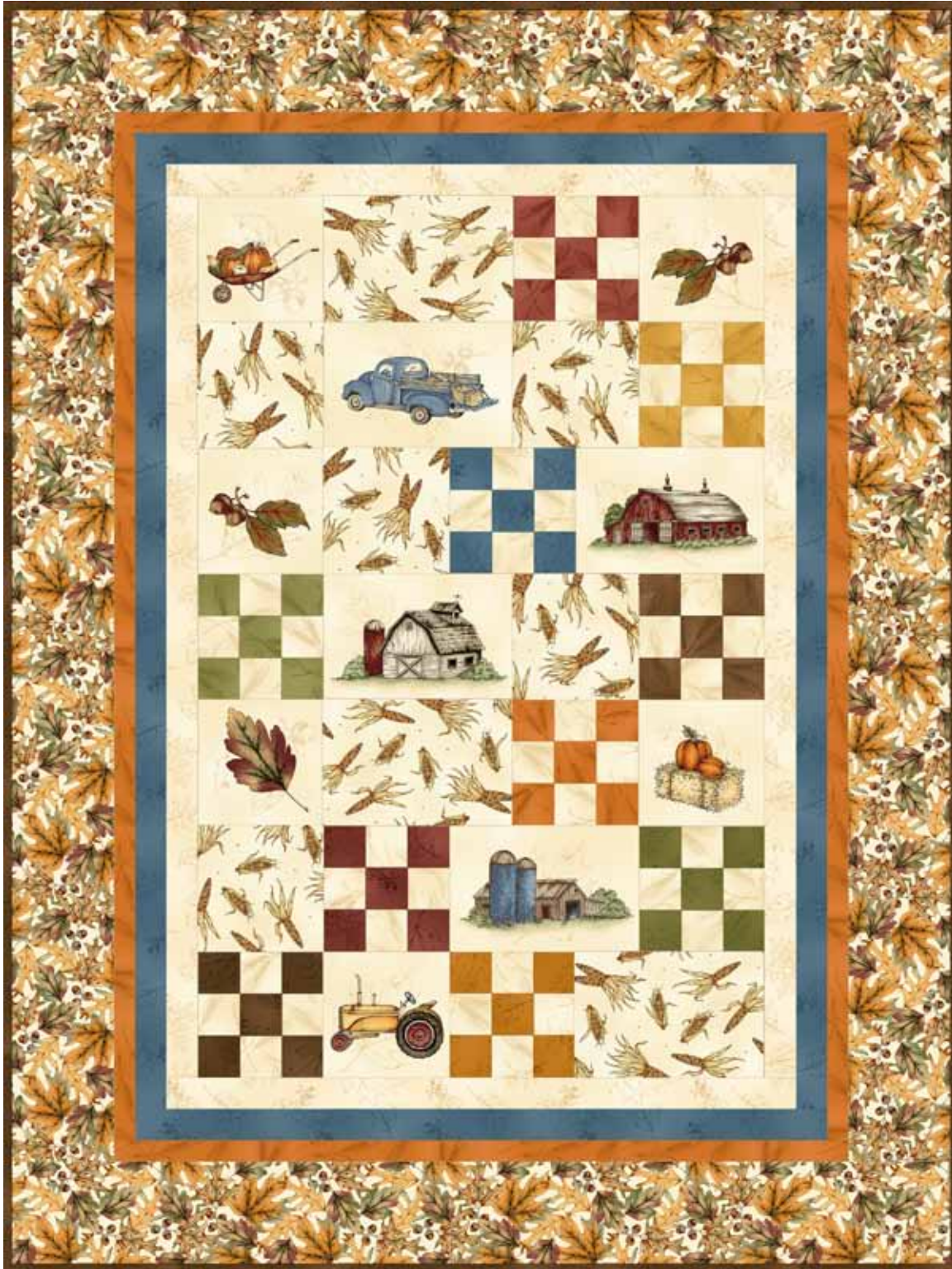


Fields of  
GOLD

# FIELDS OF GOLD

Quilt designed by Grace Wilson for Maywood Studio  
Fields of Gold Maywood Studio designer fabric collection with Kris Lammers



finished size approx. 45" x 60"  
6" Blocks

  
MAYWOOD STUDIO

**PORTLAND**  
800.433.0722  
503.284.4124

6000 N. Cutter Cir.  
Portland, OR 97217  
fax 503.288.4475



**LOS ANGELES**  
800.237.6620  
323.584.8820

4561 Maywood Ave  
Vernon, CA 90058  
fax 323.584.8847

[www.maywoodstudio.com](http://www.maywoodstudio.com)

# FIELDS OF GOLD

Quilt designed by Grace Wilson for Maywood Studio

*Fields of Gold* Maywood Studio designer fabric collection with Kris Lammers

## Cutting

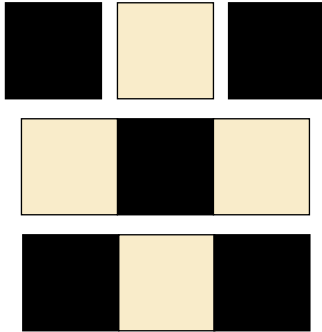
---

- Fabric 1 MAS16013-Z Panel  
Fussy cut (6) 6-1/2" square motifs  
Fussy cut (4) 6-1/2" x 9-1/2" rectangular motifs
- Fabric 2 MAS16015-E Outer Border  
Cut (4) 5" x 62" strips cut lengthwise  
trim to correct sizes for borders
- Fabric 3 MAS16016-E Setting Squares/Rectangles  
Cut (2) 6-1/2" x 42" strips into  
(5) 6-1/2" squares  
(3) 6-1/2" x 9-1/2" rectangles
- Fabric 4 MAS16017-A 9-Patch & Binding  
Cut (1) 2-1/2" x 14" strip into  
(5) 2-1/2" squares  
Cut (6) 2-1/2" x 42" strips for binding  
Piece for double binding
- Fabric 5 MAS16017-B 9-Patch & Border 2  
Cut (5) 2" x 42" strips into  
(2) 2" x 45-1/2" for sides  
(2) 2" x 33-1/2" for top and bottom
- Fabric 6 MAS16017-E Border 1  
Cut (5) 2" x 42" strips into  
(2) 2" x 42-1/2" for sides  
(2) 2" x 30-1/2" for top and bottom
- Fabric 7 MAS16017-G 9-Patch  
Cut (1) 2-1/2" x 14" strip into  
(5) 2-1/2" squares
- Fabric 8 MAS16017-R 9-Patch  
Cut (1) 2-1/2" x 14" strip into  
(5) 2-1/2" squares
- Fabric 9 MAS16017-S 9-Patch  
Cut (1) 2-1/2" x 14" strip into  
(5) 2-1/2" squares
- Fabric 10 MAS16018-A 9-Patch  
Cut (1) 2-1/2" x 14" strip into  
(5) 2-1/2" squares
- Fabric 11 MAS1618-E 9-Patch Background  
Cut (3) 2-1/2" x 42" strips into  
(40) 2-1/2" squares
- Fabric 12 MAS16018-G 9-Patch  
Cut (1) 2-1/2" x 14" strip into  
(5) 2-1/2" squares
- Fabric 13 MAS16018-M 9-Patch & Border 3  
Cut (5) 1-1/2" x 42" strips into  
(2) 1-1/2" x 47-1/2" for sides  
(2) 1-1/2" x 35-1/2" for top and bottom
- Fabric 14 MAS16018-R 9-Patch  
Cut (1) 2-1/2" x 14" strip into  
(5) 2-1/2" squares
- Fabric 15 MAS16018-S 9-Patch  
Cut (1) 2-1/2" x 14" strip into  
(5) 2-1/2" squares

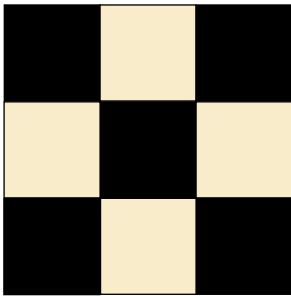
# Construction

## Nine-Patch Blocks

- Using five Fabric 11 squares and five Fabric 4 squares, sew the squares into rows as shown below using the following combinations:  
 Fabric 11 ~ Fabric 4 ~ Fabric 11  
 Fabric 4 ~ Fabric 11 ~ Fabric 4  
 Fabric 11 ~ Fabric 4 ~ Fabric 11  
 Press seams toward the dark fabric.



- Join the rows to make a 6-1/2" square block. Press toward the center.



- Make ten 9-Patch blocks following steps 1 & 2 and replacing Fabric 4 each time with five squares from the following fabrics:  
 Fabric 5, Fabric 7, Fabric 8, Fabric 9, Fabric 10  
 Fabric 12, Fabric 13, Fabric 14, Fabric 15  
 This will give you a total of 10 9-Patch blocks.

## Piecing the Quilt

- Using the quilt photo as a guide, sew the rows together using the following combinations of nine-patch blocks, panel squares/rectangles and setting squares/rectangles.

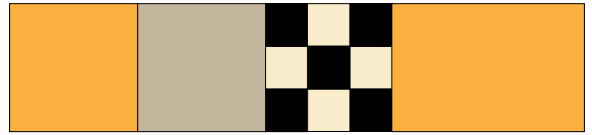
Row 1: Panel sq ~ Setting rect ~ 9-Patch ~ Panel sq



Row 2: Setting sq ~ Panel rect ~ Setting sq ~ 9-Patch



Row 3: Panel sq ~ Setting sq ~ 9-Patch ~ Panel Rect



Row 4: 9-Patch ~ Panel Rect ~ Setting sq ~ 9-Patch



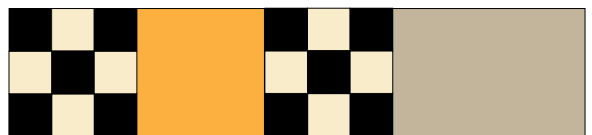
Row 5: Panel sq ~ Setting rect ~ 9-Patch ~ Panel sq



Row 6: Setting sq ~ 9-Patch ~ Panel rect ~ 9-Patch



Row 7: 9-Patch ~ Panel Sq ~ 9-Patch ~ Setting Rect



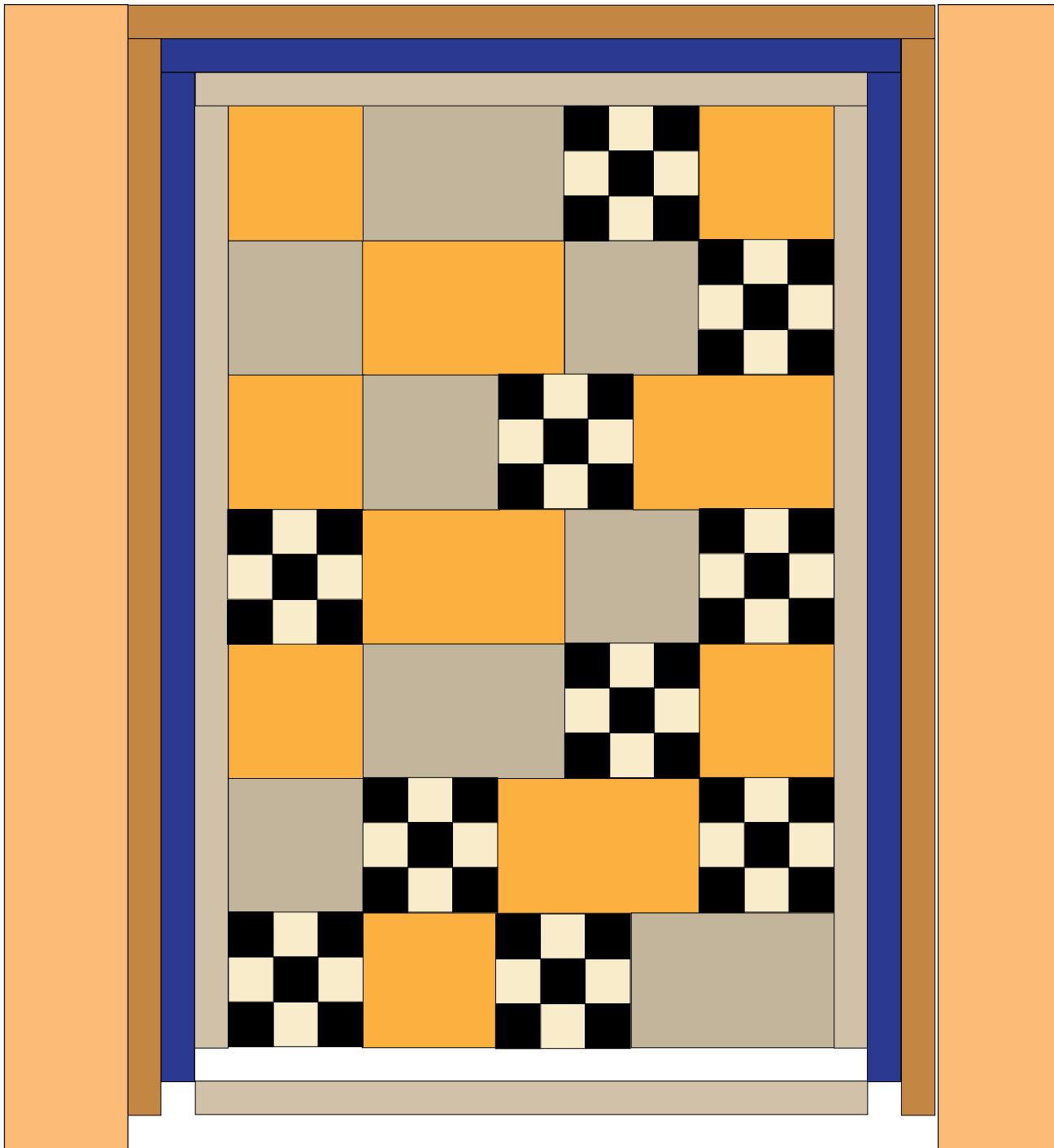
- Press the seams all one direction in a row, alternating the directions in each row.

## **Piecing the quilt top**

6. Sew the rows together in order top to bottom (see diagram next page). Press the seams all one direction or open.
7. Using fabric 6 strips, piece Border 1 together to equal the length of one side of the quilt. Sew to the side of the quilt. Repeat for the other side. Press toward the borders. Repeat for the top and bottom of the quilt.
8. Using fabric 5 strips, repeat step 7 for Border 2.
9. Using fabric 13 strips, repeat step 7 for Border 3.
10. Using fabric 2 strips, repeat step 7 for Outer Border.

## **Finishing the Quilt**

11. Piece and trim the backing at least 4" larger than the measurements of the quilt top. Layer the backing wrong side up, the batting and the quilt top right side up. Baste together then quilt as desired.
12. Join the binding ends with diagonal seams pressed open. Fold the binding in half, wrong sides together and press to make a double binding. Sew to the quilt with a 3/8" seam, mitering the corners.
13. Trim the excess batting and backing even with the quilt top. Turn the binding to the back side of the quilt and stitch down by hand with matching thread.





# Fabric

# Fields of GOLD



Fabric 1 Panel Squares & Rectangles  
MAS16013-Z  
1 panel repeat



Fabric 2 Outer border  
MAS16015-E  
1-3/4 yd.



Fabric 3 Setting Squares & Rectangles  
MAS16016-E  
1/2 yd.



Fabric 4 9-Patch and Binding  
MAS16017-A  
5/8 yd.



Fabric 5 9-Patch and Border 2  
MAS16017-B  
1/2 yd.



Fabric 6  
MAS16017-E Border 1  
3/8 yd.



Fabric 7 9-Patch  
MAS16017-G  
1/8 yd. OR (1) 3" x 42" strip



Fabric 8 9-Patch  
MAS16017-R  
1/8 yd. OR (1) 3" x 42" strip



Fabric 9 9-Patch  
MAS16017-S  
1/8 yd. OR (1) 3" x 42" strip



Fabric 10 9-Patch  
MAS16018-A  
1/8 yd. OR (1) 3" x 42" strip



Fabric 11 9-Patch and Background  
MAS16018-E  
1/3 yd.



Fabric 12 9-Patch  
MAS16018-G  
1/8 yd. OR (1) 3" x 42" strip



Fabric 13 9-Patch and Border 3  
MAS16018-M  
3/8 yd.



Fabric 14 9-Patch  
MAS16018-R  
1/8 yd. OR (1) 3" x 42" strip



Fabric 15 9-Patch  
MAS16018-S  
1/8 yd. OR (1) 3" x 42" strip

Backing  
Your Choice  
2-3/4 yds

Batting  
Crib or Twin