

Love to Garden


by

Anni Downs of Hatched & Patched



Finished Quilt Size: 68" x 68"

A Free Project Sheet From

 **Henry Glass & Co., Inc.**



49 West 37th Street, New York, NY 10018

tel: 212-686-5194 fax: 212-532-3525

Toll Free: 800-294-9495

www.henryglassfabrics.com

[facebook](#)

Love To Garden

Fabrics in the Collection



7803-44
Printed Panel



7804-38
Brown Novelty Print



7804-66
Green Novelty Print



7804-88
Red Novelty Print



7805-38
Brown Cameo Flowers



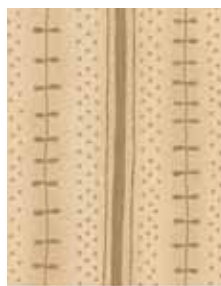
7805-55
Purple Cameo Flowers



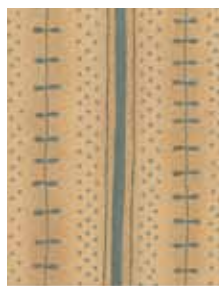
7805-77
Blue Cameo Flowers



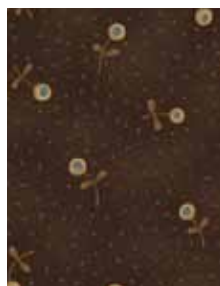
7806-38
Brown Stripe



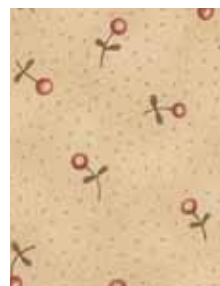
7806-44
Cream Stripe



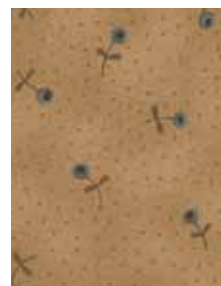
7806-47
Cream/Blue Stripe



7807-38
Brown Bud



7807-44
Cream Bud



7807-46
Cream/Green Bud



7808-48
Cream/Red Butterflies



7808-66
Green Butterflies



7808-77
Blue Butterflies



7809-35
Orange Mosaic



7809-55
Purple Mosaic



7809-77
Blue Mosaic

Materials

1 7/8 yards Printed Panel 7803-44
 5/8 yard Brown Cameo Flowers 7805-38
 5/8 yard Brown Bud 7807-38
 (includes binding)

One fat quarter **EACH** of five cream fabrics:
 7806-44, 7806-47, 7807-44, 7807-46,
 7808-48

One fat eighth **EACH** of thirteen assorted print fabrics:
 7804-38, 7804-66, 7804-88, 7805-38,
 7805-55, 7805-77, 7806-38,
 7807-38, 7808-66, 7808-77,
 7809-35, 7809-55, 7809-77

4 1/2 yards Printed Panel 7803-44
 (for quilt backing)

Cutting Instructions

Please note: all strips are cut across the width of the fabric from selvage edge to selvage edge.

From the printed panel, cut:

- (4) 12 1/2" strips. Recut into (12) 12 1/2" x 12 1/2" squares.
- (4) 2 1/2" strips. Recut into (64) 2 1/2" x 2 1/2" squares. Group these squares with the assorted cream squares for making the blocks.
(8) squares are extra.

From the brown cameo flowers, cut:

- (7) 2 1/2" strips for the outer border.

From the brown bud, cut:

- (7) 2 1/4" strips for the binding.

From EACH of the (5) cream fat quarters, cut:

- (6) 2 1/2" x 21" strips. Recut into (48) 2 1/2" x 2 1/2" squares.

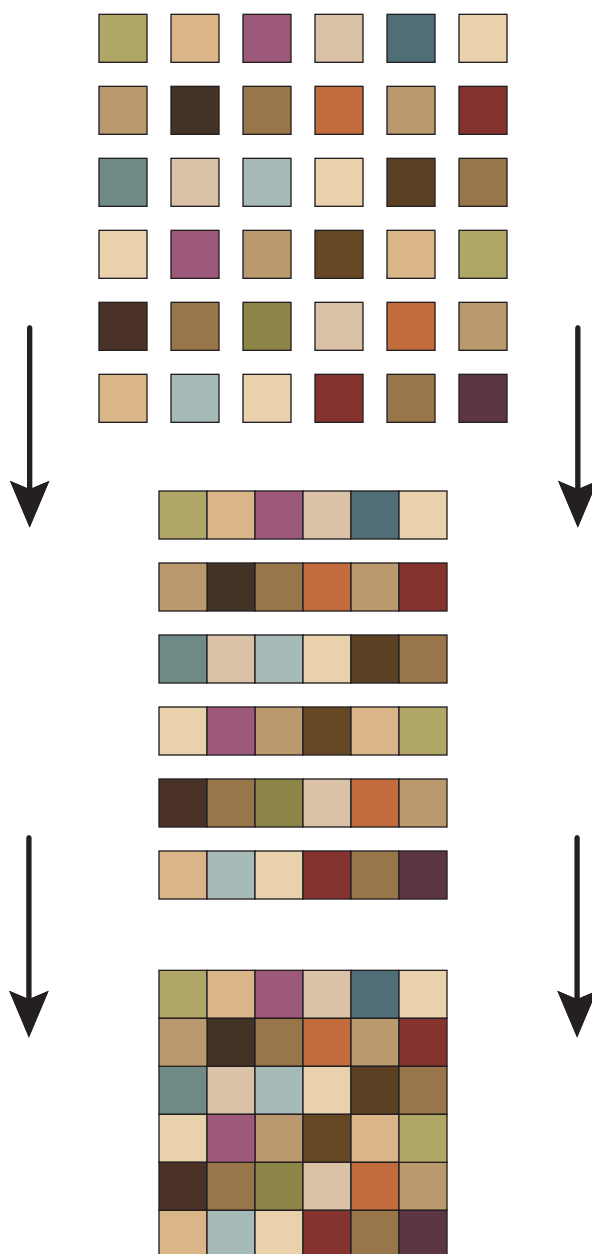
From EACH of the (13) assorted print fat eighths, cut:

- (3) 2 1/2" x 21" strips. Recut into (24) 2 1/2" x 2 1/2" squares.

Sewing Instructions

All seams are sewn using 1/4" seam allowance with pieces held right sides together and raw edges even.

Referring to the diagram below, arrange (18) 2 1/2" assorted cream squares and (18) 2 1/2" assorted print squares into (6) rows with (6) squares in each row, alternating the two types of squares as shown. If desired, refer to the quilt pictured on the cover for fabric placement or use any arrangement you find pleasing. Stitch the squares into rows. Sew the rows together to complete (1) 12 1/2" x 12 1/2" thirty-six patch block. Repeat to make a total of (13) blocks.



Sewing Instructions

1. Referring to the diagram below, arrange the (13) pieced blocks and the (12) 12½" printed panel squares into (5) rows with (5) units in each row, alternating the blocks and the squares as shown. Stitch the units into rows and sew the rows together to complete the quilt center.
2. Stitch (15) 2½" assorted cream squares and (15) 2½" assorted print squares end to end to make a pieced border 2½" wide x 60½" long, alternating the cream and print squares. Repeat to make a second pieced border. Stitch the pieced borders to the left and right sides of the quilt top, noting orientation of the borders.
3. Stitch (16) 2½" assorted cream squares and (16) 2½" assorted print squares end to end to make a pieced border 2½" wide x 64½" long, alternating the cream and print squares. Repeat to make a second pieced border. Stitch the pieced borders to the top and bottom of the quilt top, noting orientation of the borders.
4. Trim the selvages from the 2½" brown cameo flowers outer border strips. Sew the strips together end to end to make a long 2½" strip. From this long strip, cut (2) 68½" and (2) 64½" lengths (*if your measurements are different, cut to fit your quilt top*). Stitch the shorter lengths to the left and right sides of the quilt top. Sew the longer lengths to the top and bottom to complete the quilt top.
5. Layer the completed quilt top with batting and backing and quilt as desired.
6. Bind the finished quilt with the 2¼" brown bud strips.

