

# Biscuits and Jam

Perfect Pairings Collection by Kim Diehl



Finished Quilt Size: 54½" x 54½"  
A Free Project Sheet From



Henry Glass & Co., Inc.



49 West 37th Street, New York, NY 10018  
tel: 212-686-5194 fax: 212-532-3525  
Toll Free: 800-294-9495  
[www.henryglassfabrics.com](http://www.henryglassfabrics.com)

facebook



# PERFECT PAIRINGS

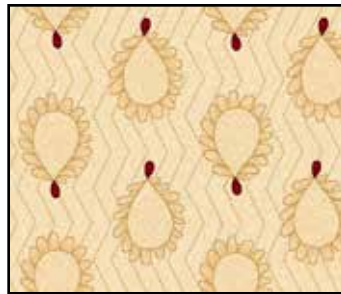
## ~ Biscuits and Jam Lap Quilt

Designed by Kim Diehl

Finished Quilt Size: 54½" x 54½"



6060-44  
Cream Paisley



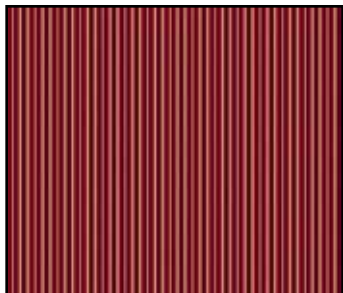
6061-44  
Cream Teardrop Wreaths



6062-8  
Red Ribbons



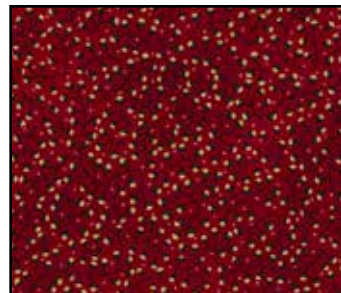
6063-88  
Red Circle Wreaths



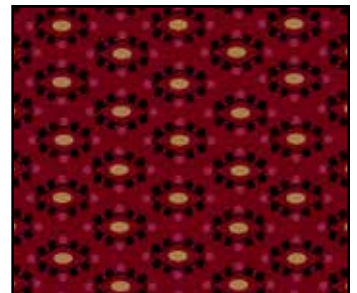
6064-88  
Red Stripe



6065-88  
Red Floral



6066-88  
Red Buds



6067-88  
Red Mosaic

### Materials

- . ¼ yard cream paisley print for appliqué block background: 6060-44
- . ¾ yard cream teardrop wreath print for appliqué block background: 6061-44
- . 1¾ yards red ribbon print for appliqués and border: 6062-8
- . ½ yard red circle wreath print for appliqués and border: 6063-88
- . 1¼ yards red stripe print for appliqués, inner border, and binding: 6064-88
- . ⅞ yard red floral print for appliqués and border: 6065-88
- . ⅝ yard red bud print for appliqués and border: 6066-88
- . ⅝ yard red mosaic print for appliqués and border: 6067-88
- . 3⅝ yards of red ribbon print for backing: 6062-8
- . 1 square, 60" x 60" of batting
- . ⅜" bias bar
- . Water-soluble liquid glue for fabric
- . Basic supplies for quilting and your favorite appliqué method

### Cutting

*Cut all pieces across the width of the fabric in the order given, unless otherwise noted. For greater ease, cutting instructions for the appliqués are provided separately.*

#### From the cream paisley print, cut:

1 strip, 20½" x 42"; crosscut into 2 squares, 20½" x 20½"

#### From the cream teardrop print, cut:

1 strip, 20½" x 42"; crosscut into 2 squares, 20½" x 20½"

#### From the red stripe print\*, cut:

4 strips, 1½" x 40½"

6 strips, 2½" x 42" (binding)

#### From the red ribbon print\*, cut:

15 strips, 2½" x 42"; crosscut into 232 squares, 2½" x 2½"

1 strip, 2⅞" x 42"; crosscut into 4 squares, 2⅞" x 2⅞". Cut each square in half diagonally once to yield a total of 8 triangles.

#### From the red floral, bud, and mosaic prints\*, cut a combined total of:

116 rectangles, 2½" x 4½"

4 squares, 2⅞" x 2⅞"; cut each square in half diagonally once to yield a combined total of 8 triangles.

#### From the red circle wreath print\*, cut:

1 strip, 7½" x 42"; crosscut into 4 squares, 7½" x 7½"

\*Reserve the remainder of these prints for the appliqués.

*Please note that appliqué patterns do not include seam allowances. All pieces are sewn with right sides together and a 1/4" seam allowance unless otherwise noted. Before beginning the appliqué steps, please read the instructions provided below.*

**From the remainder of the red stripe print, cut:**

4 bias strips, 1¼" x 26"

8 bias strips, 1¼" x 7"

4 cross-grain fabric strips, 1¼" x 15"

**From the remainder of the red circle wreath print, cut:**

5 flower appliqués

**From the remainder of the red floral print, cut:**

88 tear drop leaf appliqués

8 oak leaf appliqués

**From the remainder of the red ribbon print, cut:**

5 large circle appliqués

8 tear drop leaf appliqués

8 star appliqués

**From the remainder of the red mosaic print, cut:**

8 large circle appliqués

5 star appliqués

**From the remainder of the red bud print, cut:**

60 berry appliqués

1. Fold one cream print 20½" square in half diagonally with right sides together; use a hot dry iron to press a center crease. Repeat with the remaining cream print 20½" squares.

2. Fold each stripe print 1¼"-wide strip in half lengthwise with wrong sides together. Use a scant 1/4" seam allowance to stitch along the long raw edges to make tubes. Use the bias bar to press each tube flat, centering the seam allowance so it will be hidden from the front. Use small dots of liquid fabric glue underneath each pressed seam allowance at approximately 1/2" to 1" intervals; heat set the seam allowances in place using a hot, dry iron.



3. Referring to the pictured quilt, center a flower appliqué over the diagonal crease on a prepared cream print square, positioning it so the finished edges will be approximately 1" in from the raw edges of the square; pin in place. Position and pin a large red

circle appliqué onto each corner adjacent to the corner with the flower appliqué, leaving an approximate 1" margin, as previously instructed.

4. Dot the seam allowance of a 15" stem with liquid fabric glue and position it onto the background, centering it over the pressed crease and tucking the raw edge under the flower at least 1/4". In the same manner, glue baste and add the 7" side stems, positioning them approximately 1" below the flower; tuck the raw ends well to the center of the main stem to prevent fraying. Last, glue baste and lay out the bottom stem, tucking the raw ends underneath the red circle appliqués at least 1/4". Trim away any excess center stem length where it meets the bottom stem, ensuring the raw end is tucked well underneath to prevent it from fraying. Remove the flower and circle appliqués. Heat set the stems from the back of the block using a hot, dry iron. Use your favorite appliqué method to stitch the stems in place.

5. Reposition and baste the flower and circle appliqués. Next, using the pictured quilt as a guide, lay out and baste 22 red floral leaves along the stems. Last, position and baste 15 berries. Stitch the appliqués in place. Continue working from the bottom layer to the top to position, baste, and stitch the remaining appliqués.

6. Repeat steps 3 through 5 to appliqué four blocks.

7. Lay out the four appliquéd blocks to form a four-patch, with the background prints placed in alternating positions. Join the blocks in each horizontal row. Press the seam allowances of each row in opposite directions. Join the rows. Press the seam allowance to one side. The pieced and appliquéd quilt center should now measure 40½" square, including the seam allowances.

8. Position, baste, and stitch the remaining flower, circle, and star appliqués onto the quilt top where the blocks intersect, using the patchwork seams to center the shapes.

## Piecing and Adding the Borders

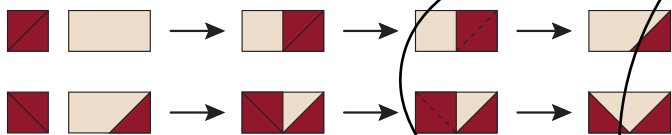
1. Join together a red print triangle and a ribbon print triangle, stitching the pair along the long diagonal edges. Press the seam allowances toward the red print. Trim away the dog-ear points. Repeat for a total of eight half-square-triangle units measuring  $2\frac{1}{2}$ " square, including the seam allowances.



2. Using an acrylic ruler and a pencil, draw a diagonal sewing line from point to point on the wrong side of each ribbon print  $2\frac{1}{2}$ " square.

3. Layer a prepared ribbon print square onto one end of a red print  $2\frac{1}{2}$ " x  $4\frac{1}{2}$ " rectangle as shown. Stitch the pair together on the drawn line. Fold back the resulting inner triangle, aligning the raw edges with the corner edges of the rectangle; press. Trim away the excess layers beneath the top triangle, leaving a  $\frac{1}{4}$ " seam allowance. Repeat with the remaining red print rectangles and half of the ribbon print squares. In the same manner, layer, stitch, press, and trim a ribbon print square onto the remaining end of each red print rectangle to form 116 Flying Geese units.

4. Referring to the pictured quilt, lay out 10 Flying Geese units from step 2 end to end. Join the



units. Press the seam allowances open. Repeat to make eight pieced A strips.

5. Follow step 4 to make four pieced strips of nine Flying Geese units each. Using the pictured quilt as a guide, join a half-square-triangle unit from step 1 to each end of these strips to make four pieced B strips. Press the seam allowances open.

6. Referring to the pictured quilt, lay out two A strips and one B strip in alternating positions. Join

the strips. Press the seam allowances open. Join a red stripe  $1\frac{1}{2}$ " x  $40\frac{1}{2}$ " strip to the long red edge of this pieced strip unit. Press the seam allowances toward the red stripe. Repeat to make a total of four pieced border strips measuring  $7\frac{1}{2}$ " x  $40\frac{1}{2}$ ", including the seam allowances.

7. Join a pieced border strip to the right and left sides of the quilt center, with the striped edge adjoining the appliqué blocks. Press the seam allowances toward the quilt center.

8. Join a red dotted wreath  $7\frac{1}{2}$ " square to each end of the remaining pieced border strips. Press the seam allowances toward the red squares. Join these strips to the remaining edges of the quilt center. Press the seam allowances toward the quilt center. The quilt top should now measure  $54\frac{1}{2}$ " square, including the seam allowances.

## Completing the Quilt

Layer the quilt top, batting, and backing. Quilt the layers. Join the six red stripe  $2\frac{1}{2}$ " x  $42$ " strips into one length and use it to bind the quilt.

