

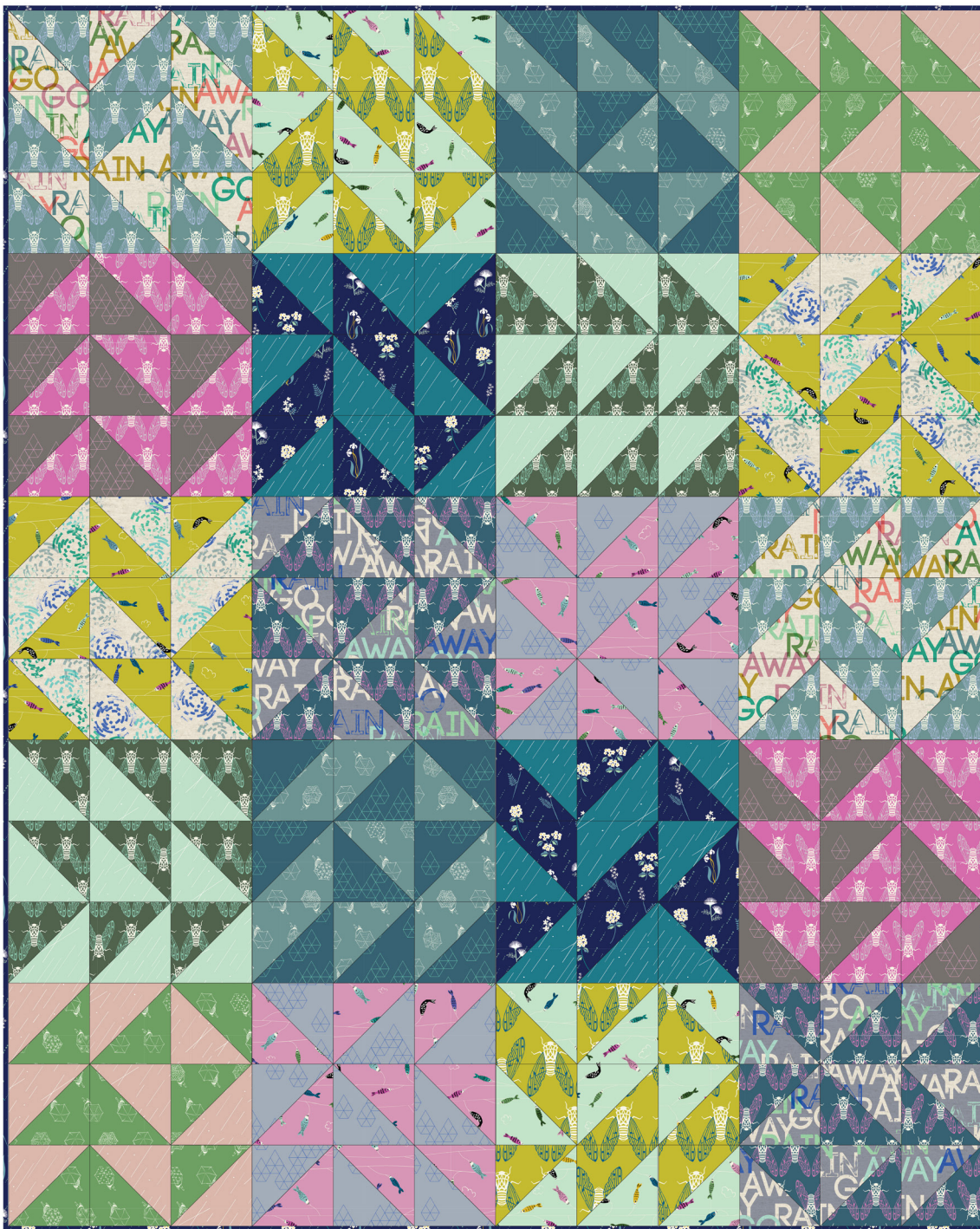
PATTERN NO.

0015-01

COTTON+STEEL

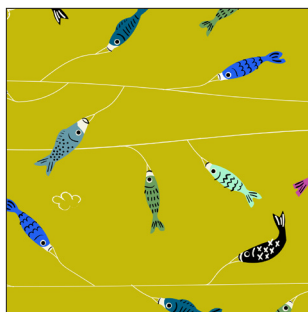
A DIVISION OF RJR FABRICS

| COLLECTION | PATTERN NAME | PATTERN DESIGNER | FABRIC DESIGNER |
|------------|----------------|----------------------|----------------------|
| RAINDROP | RAINDROP QUILT | RASHIDA COLEMAN-HALE | RASHIDA COLEMAN-HALE |



45" x 56"

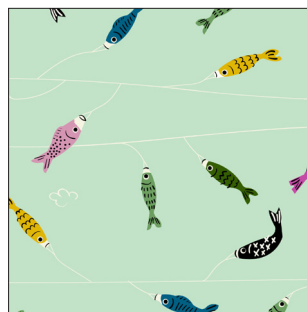
FABRIC REQUIREMENTS AND CUTTING LIST:



1936-1

Koinobori - Pear
1/4 Yard

Cut nine 4 3/8" squares
make 18 HST's from this
and 1941-1 following the
instructions in step 1



1936-2

Koinobori - Sky
1/4 Yard

Cut nine 4 3/8" squares
make 18 HST's from this
and 1944-22 following the
instructions in step 1



1936-3

Koinobori - Bubblegum
1/4 Yard

Cut nine 4 3/8" squares
make 18 HST's from this
and 1943-3 following the
instructions in step 1



1937-1

Cicada Song - Dark Plum
1/4 Yard

Cut nine 4 3/8" squares
make 18 HST's from this
and 1943-2 following the
instructions in step 1



1937-2

Cicada Song - Forest
1/4 Yard

Cut nine 4 3/8" squares
make 18 HST's from this
and 1939-2 following the
instructions in step 1



1937-3

Cicada Song - Teal
1/4 Yard

Cut nine 4 3/8" squares
make 18 HST's from this
and 1938-2 following the
instructions in step 1

FABRIC REQUIREMENTS AND CUTTING LIST:



1938-1

Rain Go Away - Sun Shower
1/4 Yard

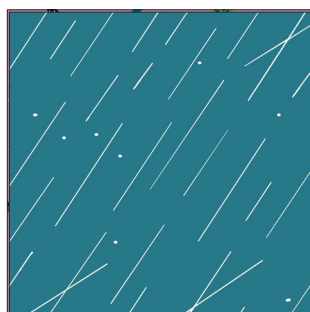
Cut nine 4 3/8" squares
make 18 HST's from this
and 1944-12 following the
instructions in step 1



1938-2

Rain Go Away - Storm
1/4 Yard

Cut nine 4 3/8" squares
make 18 HST's from this
and 1937-3 following the
instructions in step 1



1939-1

Precipitation - Teal
1/4 Yard

Cut nine 4 3/8" squares
make 18 HST's from this
and 1940-1 following the
instructions in step 1



1939-2

Precipitation - Pistachio
1/4 Yard

Cut nine 4 3/8" squares
make 18 HST's from this
and 1937-2 following the
instructions in step 1



1939-3

Precipitation - Blush
1/4 Yard

Cut nine 4 3/8" squares
make 18 HST's from this
and 1942-2 following the
instructions in step 1



1940-1

In Bloom - Night*
3/4 Yard

*Piecing and Binding
Cut nine 4 3/8" squares
make 18 HST's from this
and 1939-1 following the
instructions in step 1

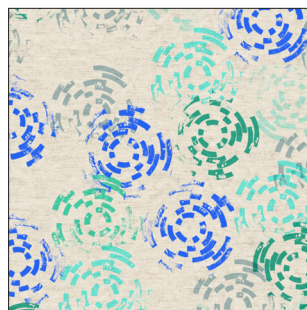
FABRIC REQUIREMENTS AND CUTTING LIST:



1940-2

In Bloom - Dusk
1/4 Yard

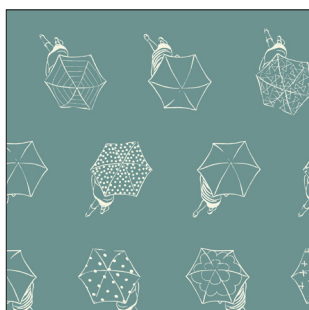
OPTIONAL for pieced
backing
Cut twelve 4 3/8" squares
make 24 HST's from this
and 1942-3 following the
instructions in step 1



1941-1

Puddle Jump - Sea
1/4 Yard

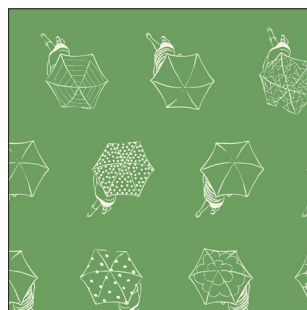
Cut nine 4 3/8" squares
make 18 HST's from this
and 1936-1 following the
instructions in step 1



1942-1

Rainwalk - Cloudburst
1/4 Yard

Cut nine 4 3/8" squares
make 18 HST's from this
and 1943-1 following the
instructions in step 1



1942-2

Rainwalk - Spearmint
1/4 Yard

Cut nine 4 3/8" squares
make 18 HST's from this
and 1939-3 following the
instructions in step 1



1942-3

Rainwalk - Bubblegum
1/4 Yard

OPTIONAL for pieced
backing
Cut twelve 4 3/8" squares
make 24 HST's from this
and 1940-2 following the
instructions in step 1

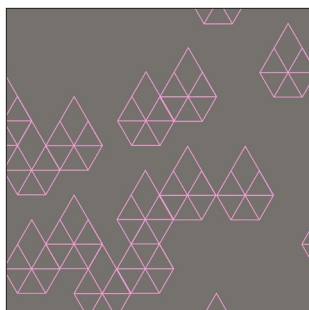


1943-1

Geo Drops - Teal
1/4 Yard

Cut nine 4 3/8" squares
make 18 HST's from this
and 1942-1 following the
instructions in step 1

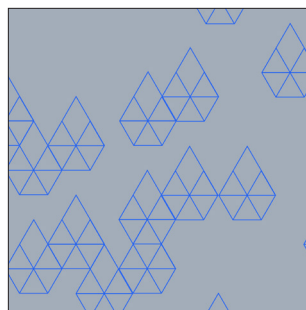
FABRIC REQUIREMENTS AND CUTTING LIST:



1943-2

Geo Drops - Charcoal
1/4 Yard

Cut nine 4 3/8" squares
make 18 HST's from this
and 1937-1 following the
instructions in step 1



1943-3

Geo Drops - Denim
1/4 Yard

Cut nine 4 3/8" squares
make 18 HST's from this
and 1936-3 following the
instructions in step 1



1944-12

Cicada Dance - Mist
1/4 Yard

Cut nine 4 3/8" squares
make 18 HST's from this
and 1938-1 following the
instructions in step 1



1944-22

Cicada Dance - Pear
1/4 Yard

Cut nine 4 3/8" squares
make 18 HST's from this
and 1936-2 following the
instructions in step 1

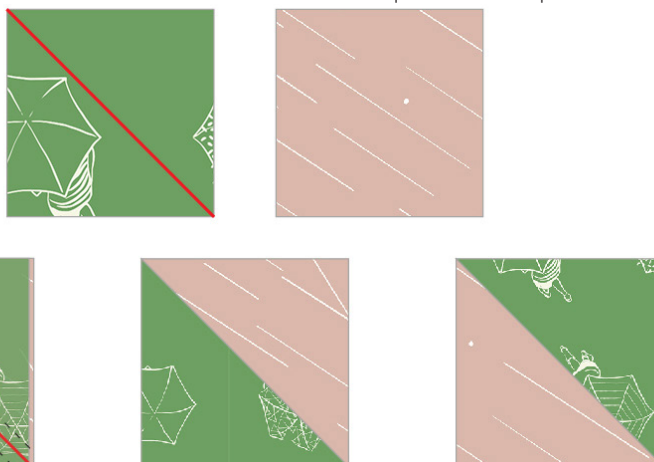
SUPPLIES REQUIRED:

- Quilt batting
- All Purpose Thread
- Suggested Backing 3 5/8 yds Rain Go Away - Sun Shower

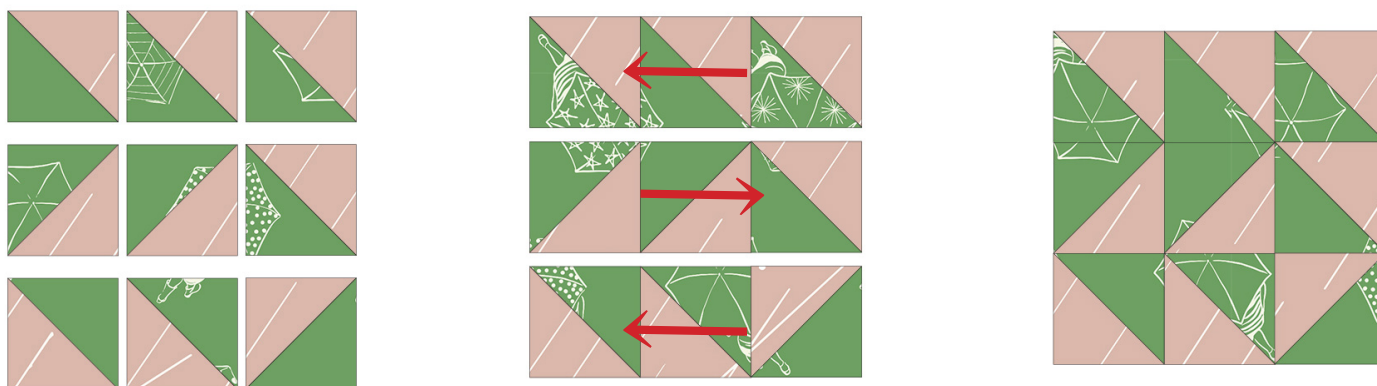
INSTRUCTIONS:

1/4" seam allowance

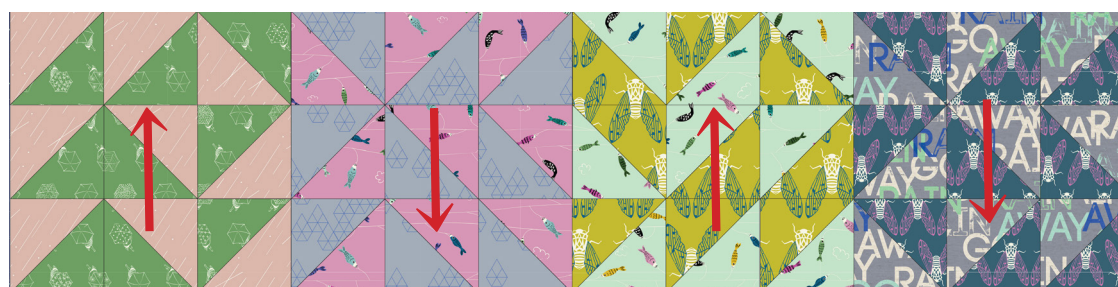
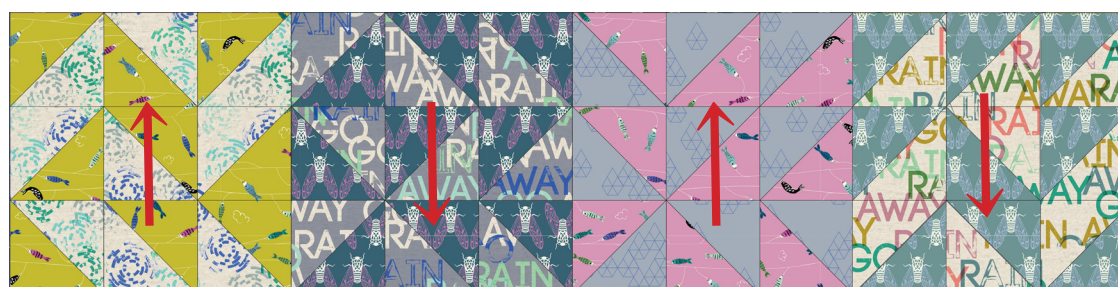
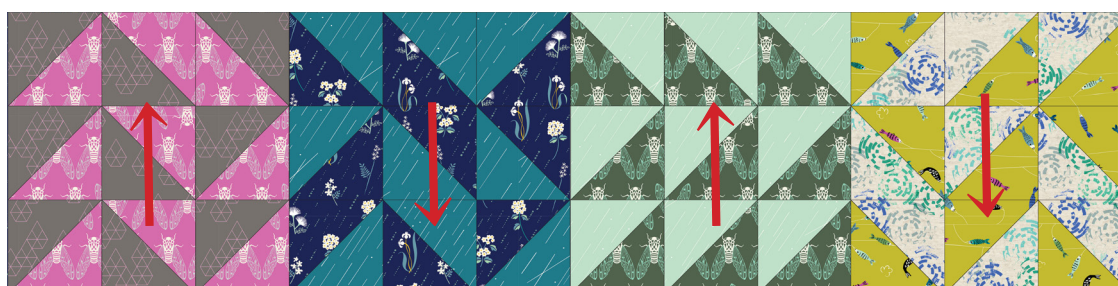
1. This quilt is made up of half square triangle blocks. You will need two different print 4 3/8" squares to make two half square triangles (HST). Mark a line on the wrong side of one of the lighter fabrics in each pair, from corner to corner. Place the marked fabric right sides together with its mate and sew two seam lines, each 1/4" away from the center marked line. Cut along the marked line, press seams open and trim excess seam allowance at the corners where the excess hangs over the edge of the square. HSTs should measure 3 1/2" square at this point.



2. Following the quilt block diagram, make each of the twenty blocks required for the quilt. To assemble each block, sew each horizontal row of the block first. Press the seams in opposite directions starting with the first row to the left, second row to the right and last row to the left. This will allow your seams to nest. Sew the three rows together, starting with the first and second rows, then adding the third row. Repeat to complete all of the blocks.



3. Lay the blocks out to prepare the rows for sewing. Now you will press each individual block's horizontal row seams in alternating directions according to the block's placement in each row. Sew each horizontal row together.



4. Press the vertical seams in each row in alternating directions starting with row one to the right, row two to the left, so on and so forth until all of the rows are pressed. This will allow the seams to nest. Sew the rows together to complete the quilt top. Press the row seams down towards the bottom edge of the quilt.

5. Quilt and bind as desired.

