

# Botanica


Finished size 55" x 76" (1.40m x 1.90m)

Designed by Lynne Goldsworthy of [lilysquilts.blogspot.com](http://lilysquilts.blogspot.com)  
using the Botanica collection from Makower UK [www.makoweruk.com](http://www.makoweruk.com)



makower uk

Unit 14, Cordwallis Business Park, Clivemont Road,  
Maidenhead, Berkshire SL6 7BU +44(0)1628 509640  
[sales@makoweruk.com](mailto:sales@makoweruk.com) [www.makoweruk.com](http://www.makoweruk.com)

 andover

# Botanica

Finished size 55" x 76" (1.40m x 1.90m)

Designed by Lynne Goldsworthy of [lilysquilts.blogspot.com](http://lilysquilts.blogspot.com)

using the Botanica collection from Makower UK [www.makoweruk.com](http://www.makoweruk.com)

## Fabric Requirements

Description	SKU	Fabric	Cut	Used for
Large Floral blue	1862 B	One FQ	Two 7" WOF strips	Seven large triangles
Large Floral yellow	1862 Y	One FQ	Two 7" WOF strips	Seven large triangles
Large Floral yellow (backing)	1862 Y	3 ¼ m / 3 ½ yds*	Cut into two equal lengths	
Butterflies pink	1863 B	One FQ	Two 7" WOF strips	Six large triangles
Butterflies black	1863 S	One FQ	Two 7" WOF strips	Six large triangles
Forest Fruits blue	1864 B	One F8th	Two 4" WOF strips	Nine small triangles
Forest Fruits white	1864 Q	35cm / 12"	Cut one 4 ½" and five 1 ½" WOF strips. Cut seven small triangles from the 4 ½" WOF strip, cut the remainder into three 1 ½" WOF strips.	(Seven small triangles) Seven R2 One ½ R2
Birds On Vine blue	1865 B	One FQ	Two 7" WOF strips	Five large triangles Two large ½ triangles (1L and 1R**)
Birds On Vine cream	1865 Q	One FQ	Two 7" WOF strips	Three large triangles Five large ½ triangles (2L and 3R)
Mini Berry blue	1866 B	One F8th	One 4" WOF strip	Four small triangles Four small ½ triangles (2L and 2R)
Mini Berry black	1866 X	One F8th	One 4" WOF strip	Five small triangles Two small ½ triangles (1L and 1R)
Leaf pink	1867 P	One F8th	One 4" WOF strip	Five small triangles Two small ½ triangles (1L and 1R)
Leaf yellow	1867 Y	One FQ	One 4" WOF strip and the remainder into nine 1 ½" strips. NB: you will need to sew four of these end to end and cut the 12" lengths for the R2 strips from these	Six small triangles One small ½ triangle (R) Five R2
Linea Tonal Cameo	1525 B2	½ m / ½ yd	Twelve 1 ½" WOF strips	Two R1 Ten R2 Four ½ R1 One ½ R2
Linea Tonal Peacock	1525 B4	40cm / 15"	Nine 1 ½" WOF strips	Six R1 Five R2 One ½ R1 Three ½ R2
Linea Tonal Petrol Blue	1525 B7	40cm / 15"	Nine 1 ½" WOF strips	Six R1 Five R2 Two ½ R2
Linea Tonal Grenadine	1525 N	40cm / 15"	Ten 1 ½" WOF strips	Seven R1 Six R2 One ½ R1 Two ½ R2
Linea Tonal Azalea	1525 P6	½ m / ½ yd	Eleven 1 ½" WOF strips	One R1 Twelve R2

Linea Tonal Cream	1525 Q	½ m / ½ yd	Twelve 1 ½" WOF strips	Eight R1 Seven R2 Four ½ R2
Linea Tonal Ebony	1525 X	40cm / 15"	Ten 1 ½" WOF strips	Three R1 Eight R2 One ½ R1 Two ½ R2
Linea Tonal Ebony (binding)	1525 X	½ m / ½ yd	Seven 2 ½" WOF strips	
Linea Tonal Sulphur	1525 Y	40cm / 15"	Nine 1 ½" WOF strips	Three R1 Seven R2 One ½ R1 One ½ R2
Wadding	1.6m x 2.1m / 63" x 84"			

\* If using a directional print for the back, you will need 4 ½ metres or 4 ¾ yards.

\*\* Indicates that you should cut one left (L) and one right (R) half triangle as marked on the templates

## **Notes**

- Read the pattern in full before starting.
- ¼" seams are used throughout except where stated otherwise.
- Press after each seam, pressing seams open or to one side as preferred.
- WOF - width of fabric – a strip of fabric cut from selvedge to selvedge.
- Make sure to visit <http://www.makoweruk.com/projects/> to ensure you are working from the most up-to-date version of the pattern.

## **Cutting**

1. Cut out the fabrics as set out in the fabric requirements table. To cut the triangles and half triangles, use the triangle and half triangle templates as a guide.
2. Where 1 ½" WOF strips are required to make the log cabin triangle blocks, cut as follows if you would like to pre-cut these. NB: You may find it easier to cut them as you go, sewing one end of a full strip to the side of a triangle, pressing over, trimming off the excess and using the remainder of that strip for the next strips.
  - For each R1 (log cabin round one, the first round of strips around the smaller triangles), cut one 6", one 7" and one 8 ½" length from the 1 ½" WOF strips.
  - For each R2 (log cabin round two, the second round of strips around the smaller triangles or the first round of strips in the case of the bigger triangles), cut one 9 ½", one 11" and one 12" length from the 1 ½" WOF strips.
  - For each ½ R1 (the first round of strips around the small half triangles down the sides of the quilt), cut one 4 ½" and one 7 ½" length from the 1 ½" WOF strips.
  - For each ½ R2 (the second round of strips around the small half triangles or the first round of strips around the bigger half triangles), cut one 5" and one 12" length from the 1 ½" WOF strips.

3. To add 1 ½" wide strips to the triangles and half triangles, follow the steps in figs 1-6, (opposite) sewing a strip onto one side of the triangle, trimming as shown and continuing to add the two remaining strips to complete that round. In the case of the larger triangles, only one round will be added. In the case of the smaller triangles, two rounds will be added. Figs 7 and 8 show how the rounds are added to the half triangles.

4. Create the triangle log cabin blocks and half blocks by following the fabric placement in the main quilt image.

5. Once all the blocks and half blocks are created, sew into eight rows, again following the layout in the main quilt image.

6. Sew the eight rows together to finish the quilt top.

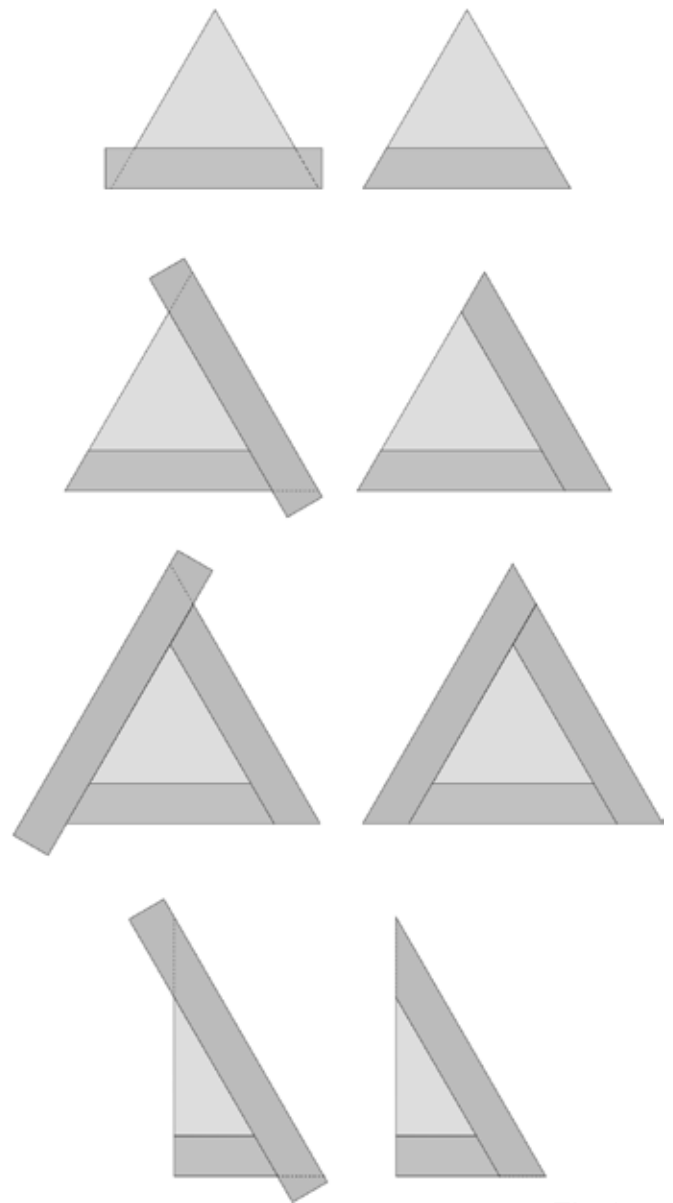
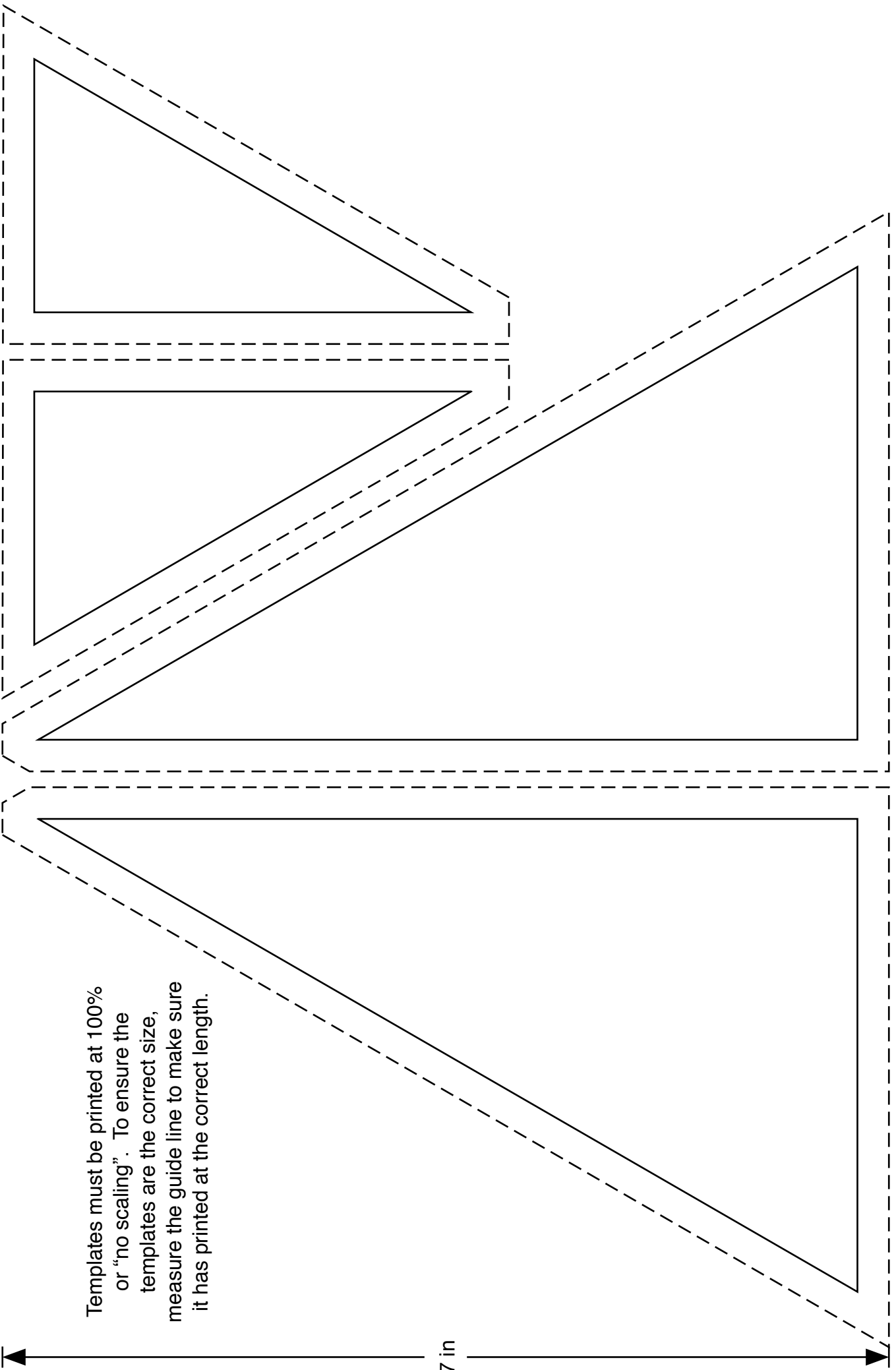


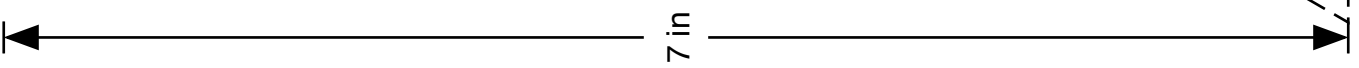
Fig 1-8

## **Finishing the quilt**

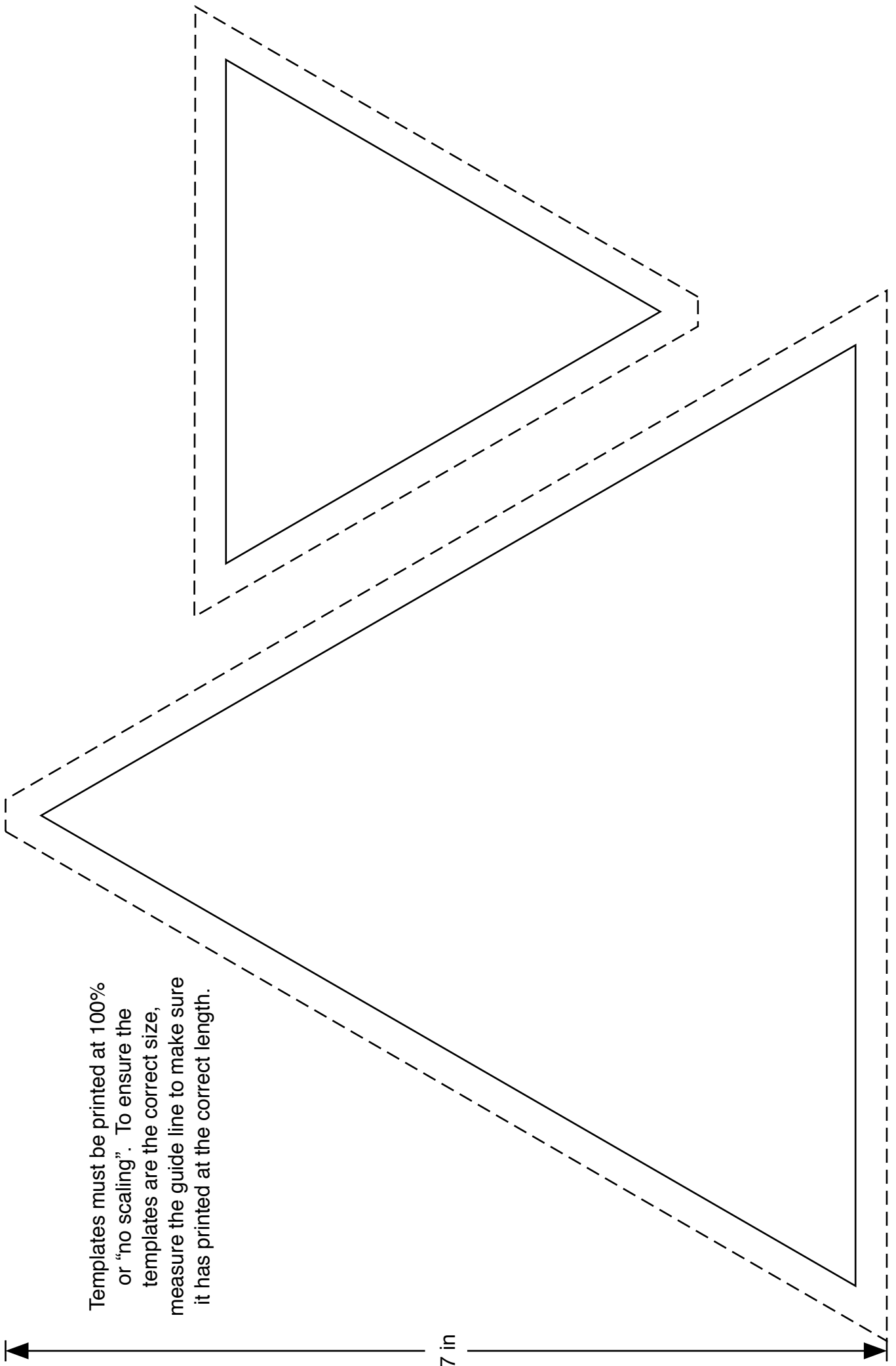
1. Sew the binding strips end to end using diagonal or straight seams as preferred and press wrong sides together along the length to make a double fold binding.
2. Make a quilt sandwich, basting together the back, the wadding and the top.
3. Quilt as desired then trim square, removing excess wadding and backing. We quilted straight lines 1" apart (one set vertical, two sets diagonal, following the lines of the triangle edges) using a cream Aurifil 40wt thread on the front and a yellow Aurifil 40wt thread on the back.
4. Bind the quilt taking care to mitre the corners.



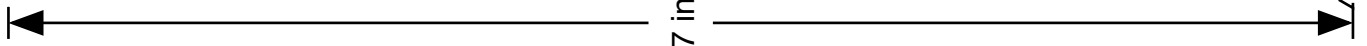
Templates must be printed at 100% or "no scaling". To ensure the templates are the correct size, measure the guide line to make sure it has printed at the correct length.



7 in



Templates must be printed at 100% or "no scaling". To ensure the templates are the correct size, measure the guide line to make sure it has printed at the correct length.



7 in



1862/Y Exotic Floral



1862/B Exotic Floral



1867/P Leaf



1864/B Forest Fruits



1864/Q Forest Fruits



1867/Y Leaf



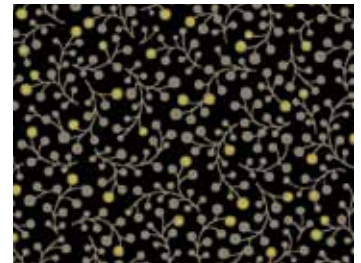
1866/B Mini Berry



1865/B Birds On Vine



1865/Q Birds On Vine



1866/X Mini Berry



1863/S Butterfly



1863/P Butterfly



1525/B2 Linea



1525/B7 Linea



1525/Y Linea



1525/P6 Linea



1525/Q Linea



1525/X Linea



Botanica by Lynne Goldsworthy  
of [lilysquilts.blogspot.com](http://lilysquilts.blogspot.com)  
Finished size 55" x 76" (1.40 x 1.90m)  
Download free from [www.makoweruk.com](http://www.makoweruk.com)  
All designs plus 1525 N & B4 used in quilt.