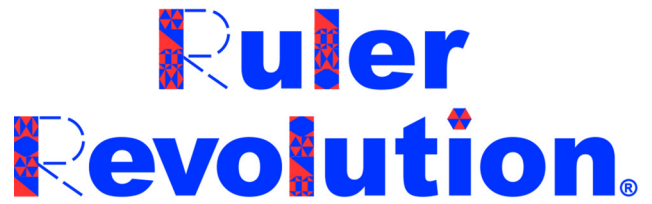


# 24 in 24; 24 in 24 Mini



"Where Speed and Accuracy Meet"

Congratulations on your selection of another revolutionary tool from Ruler Revolution. Using the Ruler Revolution *24 in 24* or *24 in 24 Mini* to make half-square triangles, you mark the sew lines and cut lines first, sew on larger pieces of fabric, then cut apart multiple units. The result is multiple half-square triangles that are accurate. You can easily make 24 half-square triangles in a common size in 24 minutes with each ruler -- or other size HSTs as well. Additionally, the rulers can be used to make multiple quarter-square triangles. There are no bias edges to stretch or skew, no paper to tear off, and no markings that have to be erased. Enjoy!

## Tip

Spray starching will help stabilize the fabric, minimize loose threads along seam edges, and assist in obtaining clean, crisp cuts and sew lines throughout the piecing process. An accurate  $\frac{1}{4}$ " seam allowance is essential for all quilt piecing.

### Ruler Revolution Half Square Triangles

1. Select two color coordinating fabrics *slightly larger than the ruler* (fat quarters are the perfect size for the **24 in 24** ruler).
2. Spray starch and iron your fabrics.
3. Place the two fabrics *right sides together* on your cutting mat and line up the edges.
4. Place your ruler over the fabric and center the ruler over the two stacked fabrics.
5. Holding the ruler firmly in place, using a Sewline or other fabric marking pencil, mark a line around the outside edge of the ruler.
6. Next, methodically mark a line in each and every slot in the ruler being careful not to skip a slot. For example, mark all the horizontal slots followed by the vertical slots. Then mark each diagonal slot.
7. Pin the two fabrics together -- the pin placements are marked with circles and semi-circles on the ruler. These pin placement positions do not interfere with your sewing.
8. After the fabrics are pinned together, take them to your sewing machine. Set your machine for approximately 12 - 14 stitches per inch.
9. Review the direction of the arrows on the ruler. The arrows indicate the direction you will sew on the "outside" and "inside" sew lines.
10. Starting at the lower left point "A" as shown in Diagram A, begin sewing outside the cut line and sew a straight line exactly on top of the outside line toward point "B." Continue sewing just beyond the line that defines the outside edge of the ruler (step 5).
11. Turn the fabric and sew a straight line from point "B" to point "C" exactly on top of the outside sew line. Again, sew just beyond the outside ruler line.

(over)

### Remove the Paper Backing

The ruler comes with a brown paper backing. To remove, lay the ruler on a flat surface. Gently peel away the brown paper while firmly holding the ruler flat on a level surface to prevent breaking the ruler along the slots. **DO NOT** carry, pick up, or support the ruler at the corner -- always use the middle of the long edge. In the event you break the ruler, it can be easily glued back together with cyanoacrylate glue (e.g. Super Glue or Instant Glue brands).

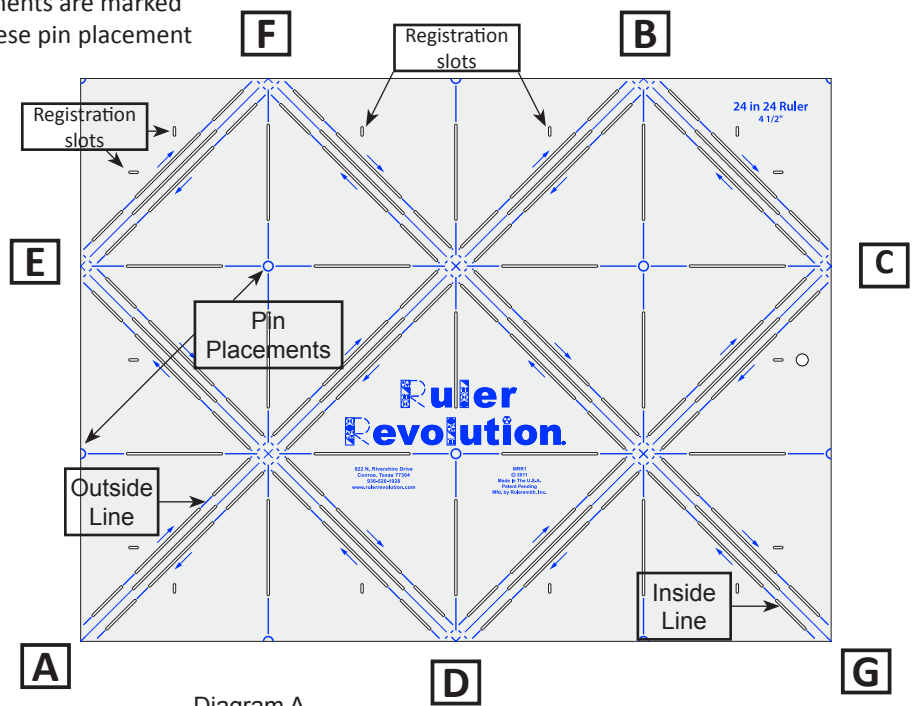
### 24 in 24 versus 24 in 24 Mini

Each ruler is designed to make multiple half square triangles in multiple sizes as follows:

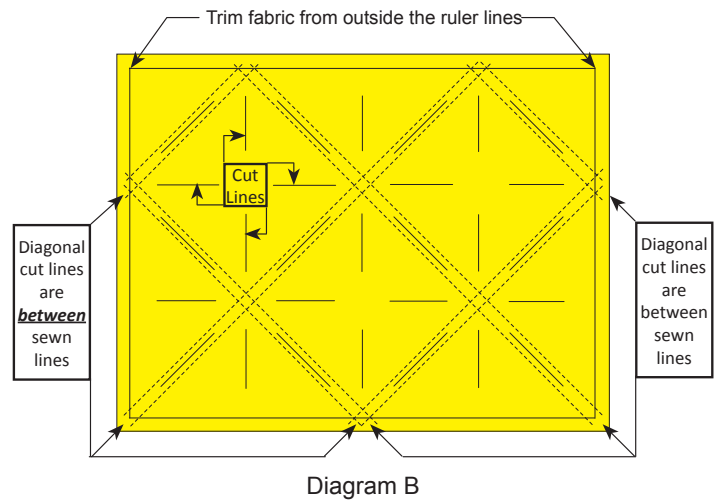
**24 in 24 Ruler:** up to 24 - 4  $\frac{1}{2}$ " unfinished  
up to 96 - 2  $\frac{1}{8}$ " unfinished  
up to 4 - 9" unfinished  
up to 2 - 13  $\frac{1}{2}$ " unfinished

**24 in 24 Mini Ruler:** up to 24 - 2  $\frac{1}{2}$ " unfinished  
up to 96 - 1  $\frac{1}{2}$ " unfinished  
up to 4 - 5" unfinished  
up to 2 - 7  $\frac{1}{2}$ " unfinished

Each ruler can be used to make just a few half-square triangles or up to the maximum number at a single time. When your pattern calls for numerous half square triangles, you can have them made in a flash. Also, the 24 in 24 ruler is designed to be "fat quarter friendly."

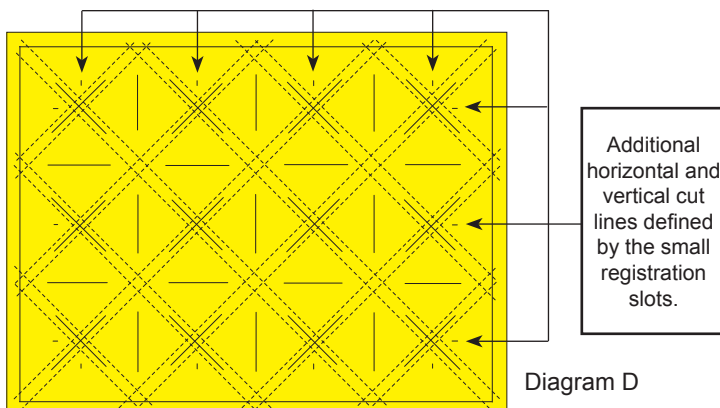
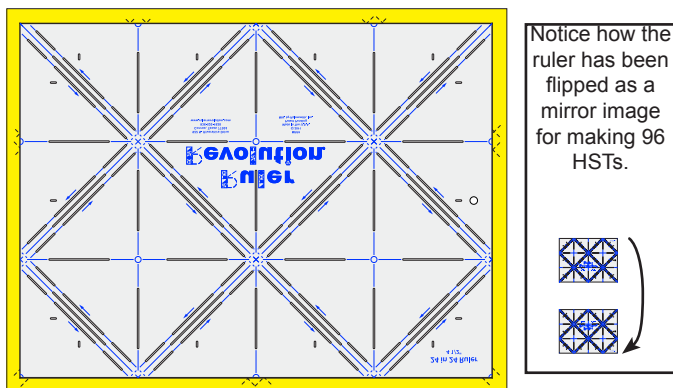


12. Continue in the same manner sewing exactly on top of the outside sew line from point "C" to points "D," "E," "F," and "G." See Diagram A.
13. At point "G," sew in the reverse order back to point "A" exactly on top of the **inside sew line**. Note: The middle line is not sewn as these are cut lines.
14. Remove the pins from the fabric and give the fabric a quick press with your iron.
15. Using the Ruler Revolution ruler or another straight edge and a rotary cutter, trim the fabric from all four edges marked in step 5. See Diagram B.  
Note: Cut on the inside edge of the line drawn around the perimeter of the ruler so that your fabric is the exact dimensions of the Ruler Revolution ruler.
16. Using a straight edge and a rotary cutter, cut through the horizontal lines and then the vertical cutting lines. Be careful not to shift your ruler or the fabric as you cut.
17. Cut each diagonal line drawn **between** the two sewn lines. Note: Carefully keep the fabric in place and aligned as you cut and each diagonal line can be cut from edge to edge across all pieces of the fabric.
18. You now have 24 half-square triangles all made within 24 minutes. Congratulations.
19. Open each triangle and press the seam toward the darker fabric. Trim the little "ears" on each corner.
20. The half-square triangles are now ready to sew into a project and should measure 4 1/2" if your marks and sewing have been accurate. Square-up the half-square triangles as needed or for smaller sizes if desired.



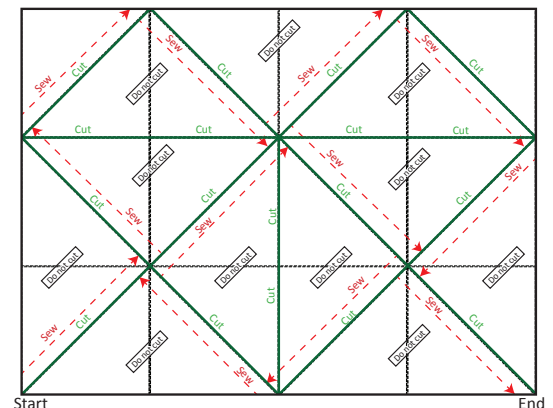
### Make 96 Half-Square Triangles

1. Once you have completed sewing and removed the pins in step 14 above, but before trimming or cutting the fabric, flip the ruler upside down as shown in Diagram C. You will draw a mirror image through the slots in the ruler.
2. Again, methodically mark a line in each and every slot in the ruler being careful not to skip a slot. Be sure to also mark the small registration slots in each square of the ruler (14 total registration slots). See Diagram A. Note: These registration slots define additional vertical and horizontal cut lines for making 96 half-square triangles.
3. Repeat sewing the inside and outside sew lines on these new pencil marks as in previous steps 11 - 13. See Diagram D.
4. Now trim the fabric from all four edges around the ruler lines as in step 15 above.
5. Cut the horizontal and vertical lines, **plus the additional horizontal and vertical lines defined by the 14 small registration slots (See Diagram D)**. Always cut the horizontal lines first, then the vertical lines. The diagonal lines should be cut last.



### Make 11 Quarter-Square Triangles

1. Mark the slots in the ruler and **sew only alternating sides** of the sew lines as shown in Diagram E.
2. Follow the cut lines as shown in Diagram E. Note: The lower horizontal line is NOT cut. The middle vertical cut line is only partially cut.



Watch the videos at [www.rulerrevolution.com](http://www.rulerrevolution.com).