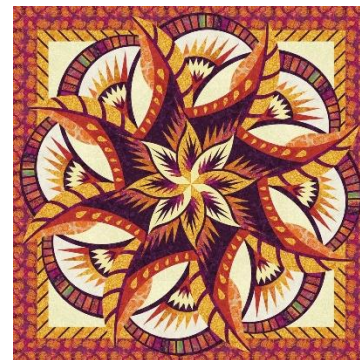


## Coral Reef Supply List

**Instructor:** Sandy Lieske, Certified Quiltworx Instructor



### Supplies Needed:

- Sewing machine with  $\frac{1}{4}$ " foot and other accessories (cord, foot pedal, extension table, and knee lift)
- Size 70/10 Microtex Sharp sewing needles
- Coral Reef pattern including the instructions and foundation papers
- Fabric or kit
- Aurifil thread to blend with your fabrics along with pre-wound bobbins (one neutral thread is fine)
- Iron and pressing mat if you want to press at your sewing station (see note below)
- Rotary cutters with new blades (it is helpful to have 3 sizes available)
  - 60 mm for cutting fabric
  - 45 mm for cutting templates
  - 28 mm for trimming
- Medium sized cutting mat if you want to do your trimming at your sewing station
- A piece of template plastic (3"x12" works well)
- Quilter's Select or Creative Grid ruler for cutting fabric and templates (24"x6" or 6 1/2" works well)
- 12" Add-A-Quarter ruler
- Sewline or Quilter's Select glue pen (have a pack of glue refills as well)
- UHU glue stick (other brands work okay too but this brand seems to work best)
- .55mm Flower Head or .5mm 1 7/8" Glass head pins (long shanks)
- Purple Thang
- Thread scissors (Havel's or Kai work well)
- Black Sharpie
- Seam ripper
- Gallon size zip lock type bags
- Jumbo paper clips
- Curved ruler (included in the pattern)

To eliminate waiting for an iron in the classroom, we suggest that students bring a travel iron and a wool pressing mat (at least 17" x 17"). We recommend the Mighty Steam Iron by Dritz, Steamfast Travel Steam Iron, or the Oliso Mini Project Iron. All of these in stock at The Quilt Crossing.

**Cancellation Policy:** We must commit to our teachers and to other students before the class begins so we can't give refunds or transfers after that time (unless we can fill your spot from the waiting list). You are welcome to send someone in your place if you are unable to come. If enrollment has not met the minimum required for the class, we will cancel it one week before the first session.

**Pre-Class Instructions:** Prep information will be available from Sandy directly.