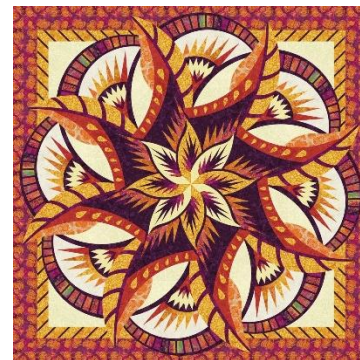


Coral Reef Supply List

Instructor: Sandy Lieske, Certified Quiltworx Instructor

Supplies Needed:

- Sewing machine with ¼" foot and other accessories (cord, foot pedal, extension table, and knee lift)
- Size 70/10 Microtex Sharp sewing needles
- Coral Reef pattern including the instructions and foundation papers
- Fabric
- Thread to blend with your fabrics along with pre-wound bobbins (one neutral thread is fine)
- Iron and pressing mat if you want to press at your sewing station
- Rotary cutters with new blades (it is helpful to have 3 sizes available)
 - 60 mm for cutting fabric
 - 45 mm for cutting templates
 - 28 mm for trimming
- Medium sized cutting mat if you want to do your trimming at your sewing station
- A piece of template plastic (3"x12" works well)
- Ruler for cutting fabric and templates (24"x6" or 6 1/2" works well)
- 12" Add-A-Quarter ruler
- Washout fabric glue stick (SewLine is a good one to use)
- UHU glue stick (other brands work okay too but this brand seems to work best)
- .55mm Flower Head or .5mm 1 7/8" Glass head pins (long shanks)
- Purple Thang
- Thread scissors
- Black Sharpie
- Seam ripper
- Gallon size zip lock type bags
- Jumbo paper clips
- Curved ruler (included in the pattern)



Cancellation Policy: We must commit to our teachers and to other students one week before the class begins so we can't give refunds or transfers after that time (unless we can fill your spot from the waiting list). You are welcome to send someone in your place if you are unable to come. If enrollment has not met the minimum required for the class, we will cancel it one week before the first session.

Pre-Class Instructions: Prep information will be available when the pattern is published.